



LG VX6100 Main Display Replacement

This guide will show how to access and remove the phone's main display screen.

Written By: Ryan Bishop



INTRODUCTION

This guide will go step-by-step through the process of accessing the phone's main display. Pictures and instructions accompany each step in the guide.

TOOLS:

- [Desoldering Braid](#) (1)
 - [Phillips #00 Screwdriver](#) (1)
 - [Large Needle Nose Pliers](#) (1)
 - [Push Pin](#) (1)
 - [Soldering Iron](#) (1)
 - [iFixit Opening Tools](#) (1)
 - [Tweezers](#) (1)
-

Step 1 — Battery



- Push down on the gray "PUSH" button on the back side of the phone.
- Slide back case downward. Then, lift and remove case.

Step 2



- Align gold prongs with gold plates on the bottom of the battery. Make sure the "This side up" is showing.
- Push battery flat against the back of the phone until it clicks into place.

Step 3 — Front Case



- Remove the four grey plugs using either tweezers or a push pin.

Step 4



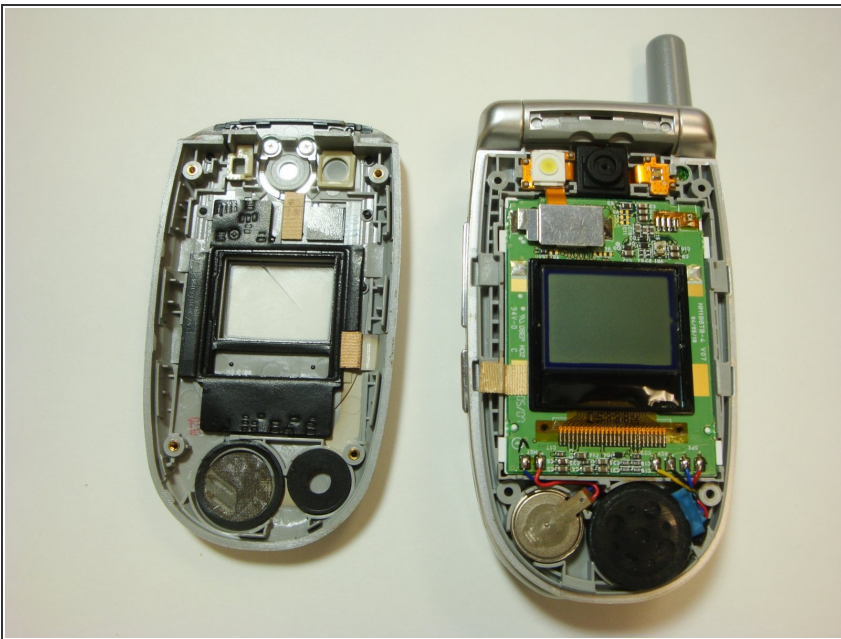
- Remove the four screws that are now exposed using a Phillips #00 screwdriver.
- ⓘ Be sure to put the screws in a safe place as they are very small and easy to lose.

Step 5



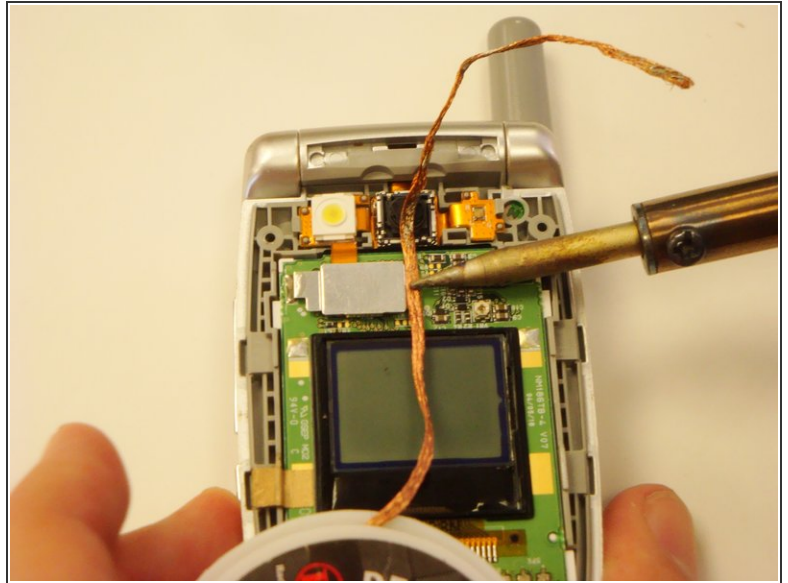
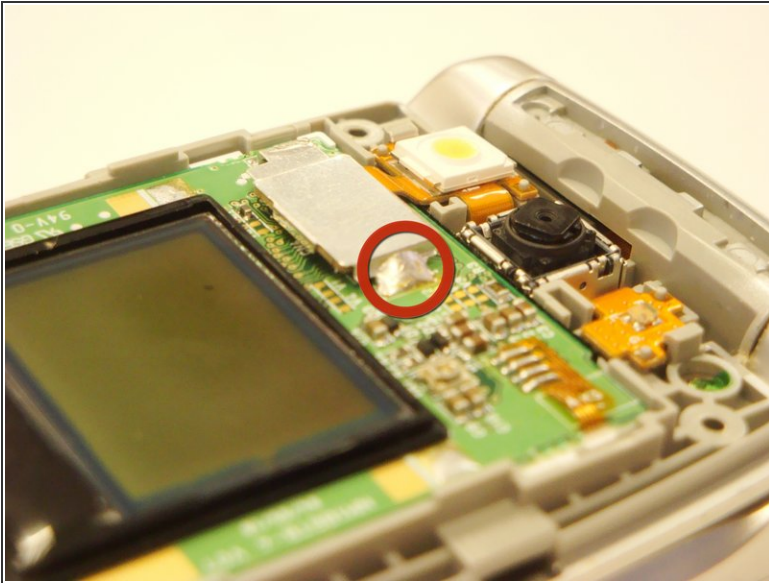
- Once all the screws have been removed, use a plastic opener tool to pry the case from the rest of the phone.
- Insert the opener tool into the seam between the case and the phone. Apply pressure to separate the two pieces.
- Do this across the entire length of the seam until the case is no longer attached to the phone.

Step 6



- The case can now be removed and the interior of the front is accessible.

Step 7 — Main Display



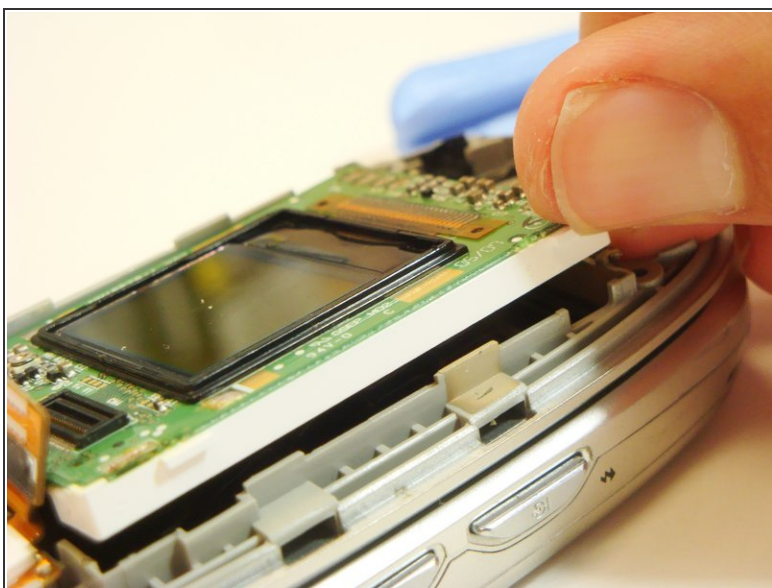
- Locate the solder on the side of the metal plate on the top half of the phone.
 - Place a piece of solder wick on top of the solder.
 - To [desolder](#) the connection, very carefully place the tip of the soldering iron on top of the solder wick. Hold it steady until the solder is soaked up into the solder wick.
- ⚠ The soldering iron will damage circuitry if held down for too long.
- Cut off the used solder wick with pliers and repeat this step if any solder remains.

Step 8



- After the solder has been removed, pry off the camera assembly connection shield with the plastic opening tool.

Step 9



- Remove the main display by lifting up the extruded white edge with your fingernail.

To reassemble your device, follow these instructions in reverse order.