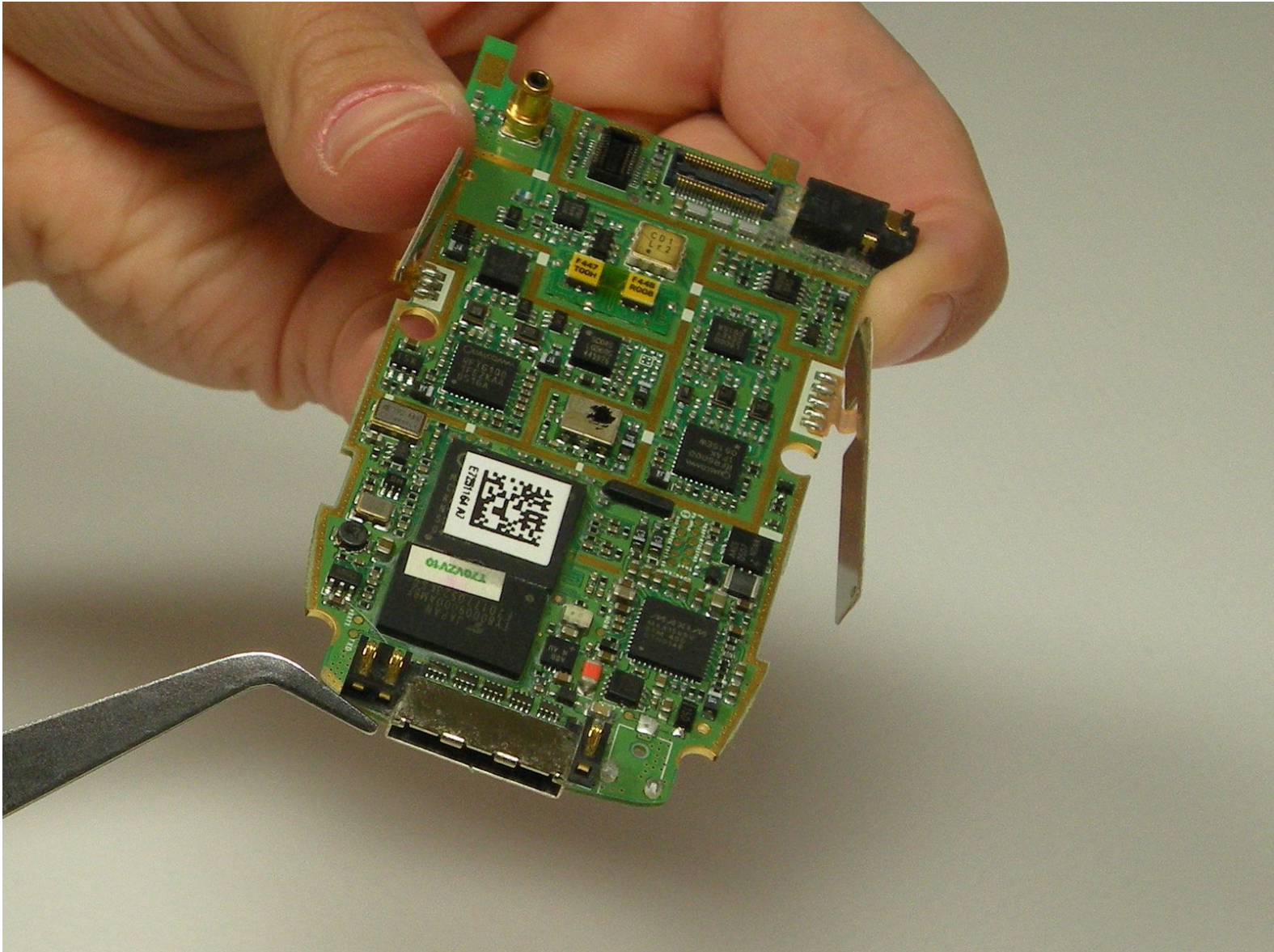




LG VX7000 Charger Adapter Replacement

Written By: Nichole Shaw



INTRODUCTION

Phone won't charge, and the charger is functional? Replace your phone's charging adapter.

NOTE: Charging adapter is attached to the logic board, so replacement requires replacing the logic board.



TOOLS:

- [Phillips #00 Screwdriver](#) (1)
 - [Tweezers](#) (1)
-

Step 1 — Battery



- Lay the phone face down with the screen in palm of hand.
- Slide the grey button towards the top of the phone.

Step 2



- While the button is slid up grab the battery on the sides and pull up with the bottom remaining in place.
- Pull the battery up vertically to completely remove from phone.

Step 3 — Logic Board



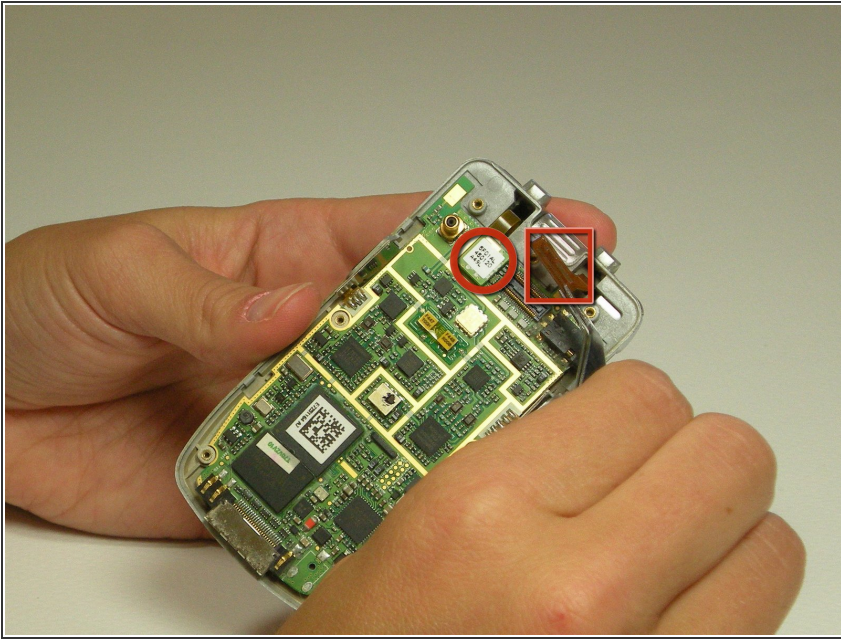
- Remove four screws beneath battery using screw driver.
- Remove three rubber screw covers with tweezers.
- Remove the three screws under the covers with the screwdriver.

Step 4



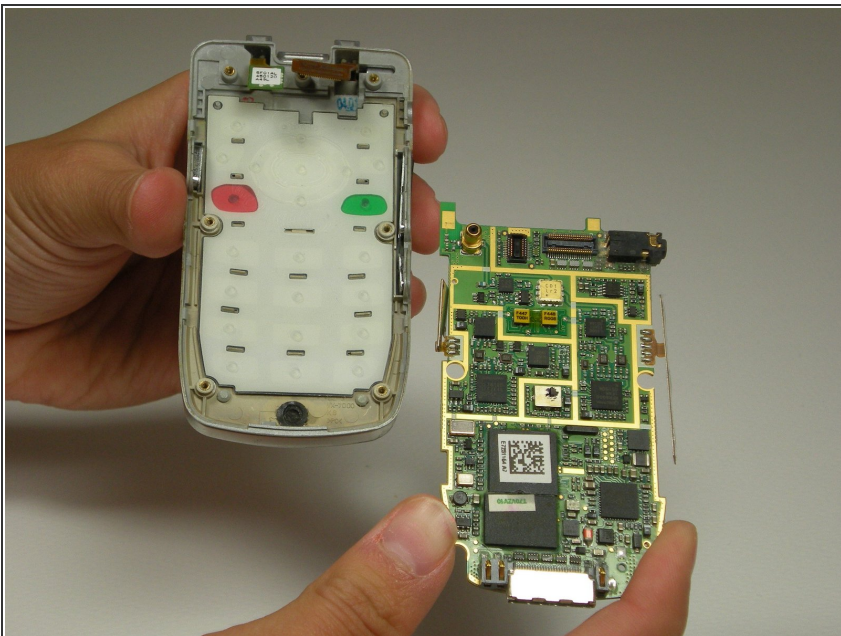
- Detach outer casing from back of phone.
- ⓘ NOTE: There will be a significant amount of resistance to detaching the back casing.

Step 5



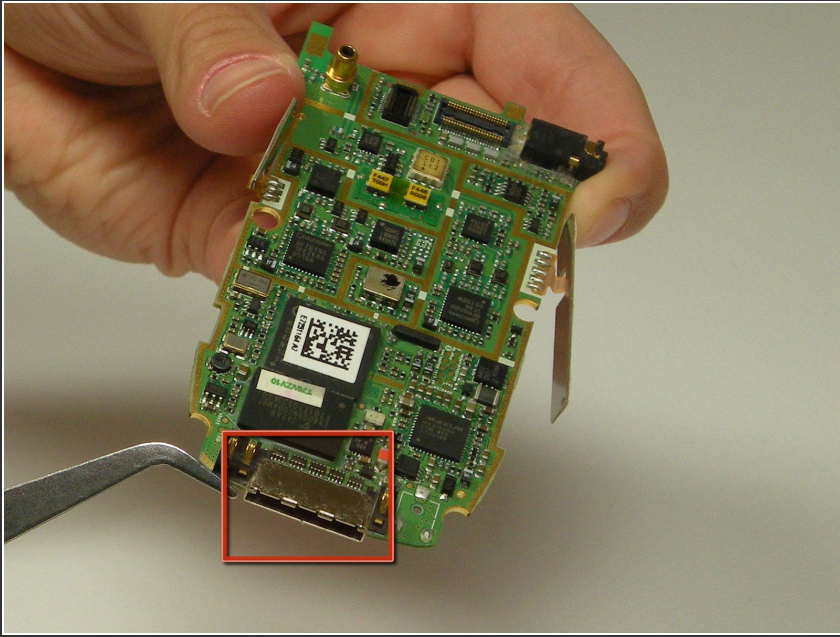
- Unsnap gold rectangular plate and silver square plate from the logic board.

Step 6



- Remove logic board, being careful not to remove any other pieces.
 - Insert new logic board with white side facing down.
- i** NOTE: Make sure side buttons on logic board are correctly aligned to avoid future complications.

Step 7 — Charger Adapter



- Replace logic board to replace charging adapter.

To reassemble your device, follow these instructions in reverse order.