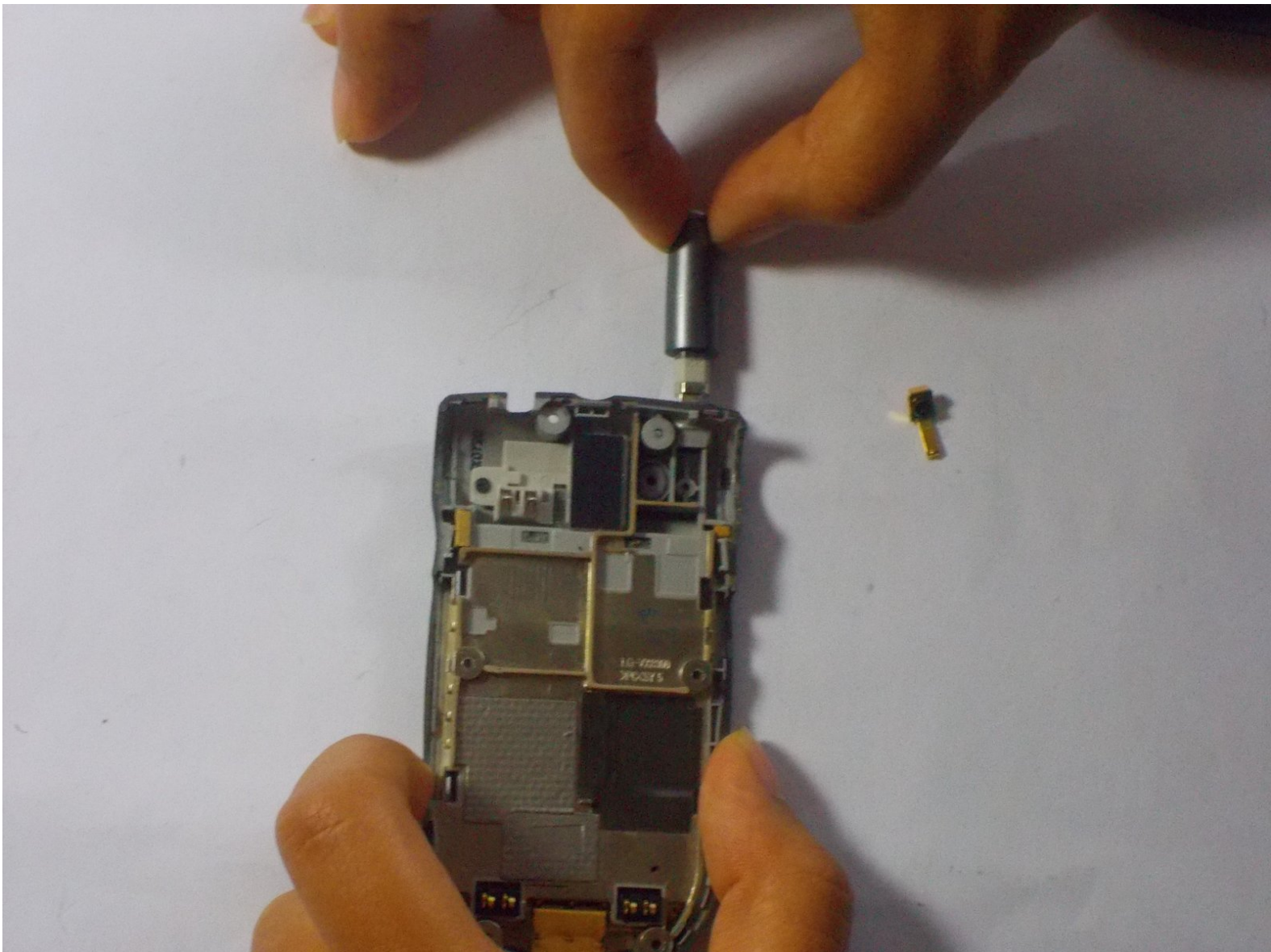




LG VX8300 Antenna Replacement

Replace a damaged or malfunctioning antenna.

Written By: nvalm



INTRODUCTION

Learn to remove the housing of the LG VX8300 and gain access to the back panel where the antenna is located.

TOOLS:

- [Phillips #00 Screwdriver](#) (1)
 - [iFixit Opening Tools](#) (1)
 - [Tweezers](#) (1)
-

Step 1 — Body Disassembly



- Power off the device by holding down the red button labeled PWR.
- ⚠ Be sure that the phone is powered off before touching the battery to avoid danger.
- Remove the battery pack cover by pushing down on the solid lines at the top end of the cover. Slide the cover down while still applying the pushing force on the top and remove the cover completely.

Step 2



- Place your finger into the semicircle gap on top of the battery.
- Push down and pull so the battery pops out of the phone.

Step 3



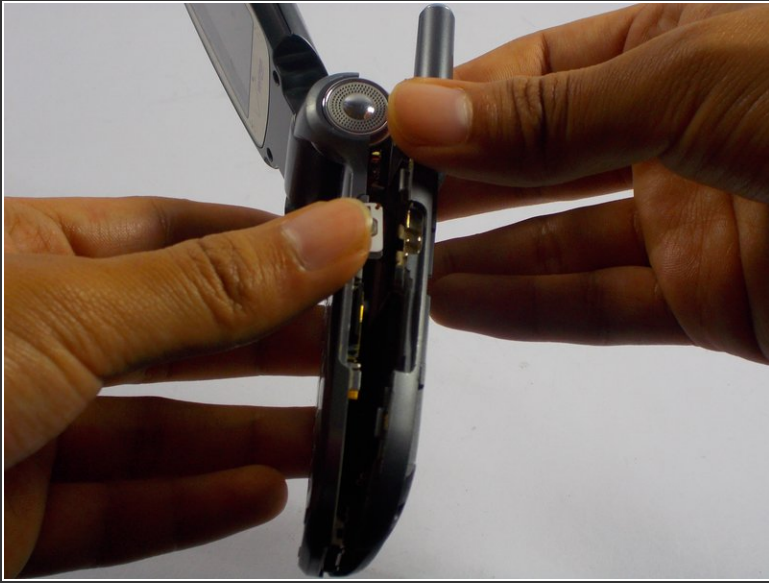
- Remove the two rubber pads blocking two screws at the top of the phone near the hinge using tweezers.

Step 4



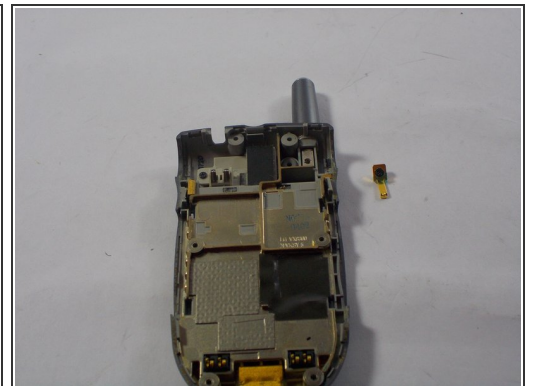
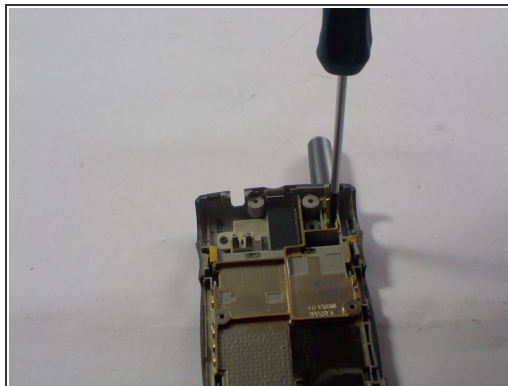
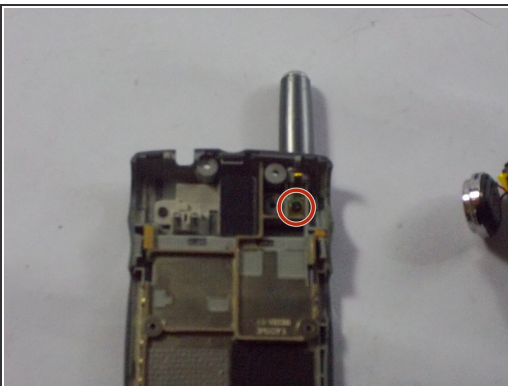
- Remove all four 3mm Phillips #00 screws from the back of the phone.

Step 5



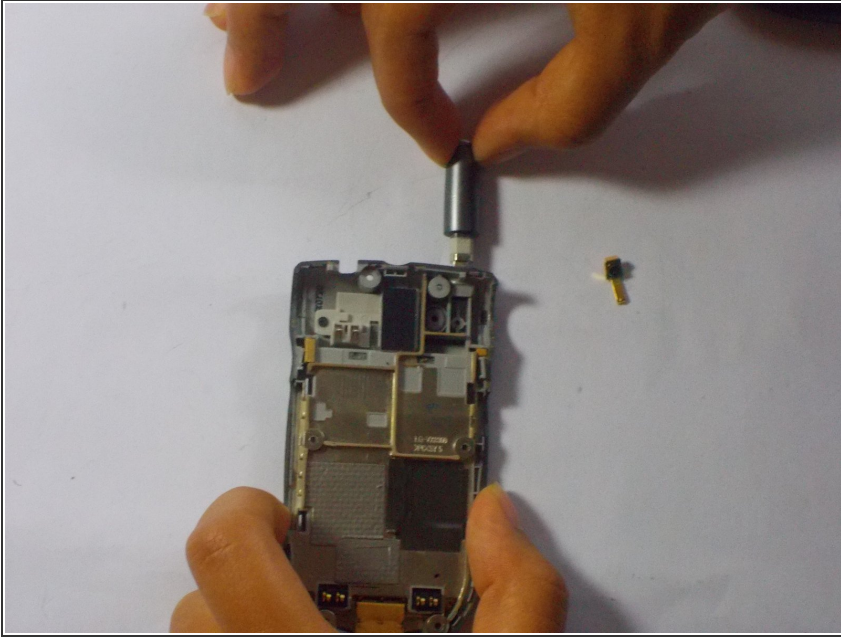
- Use your fingers to gently separate the front plate from the phone. You may need to slide a plastic opening tool along the crevice between the faces to separate it more easily.
- Remove the casing after it has been detached leaving the logic board fully accessible.
- ⓘ The volume and camera buttons are free to move around after the case has been opened. Be careful not to lose any loose pieces when continuing.

Step 6 — Antenna Replacement



- Place the back housing containing the antenna and battery pack in front of you.
- Use the PH00 screwdriver to unscrew the one 2mm diameter 3mm long PH screw on the gold band just below the antenna.

Step 7



- Slide the antenna upwards and out of the housing.
- The antenna can now be replaced with a new one.

To reassemble your device, follow these instructions in reverse order.