



# LG VX8300 Screen Housing Replacement

This guide will demonstrate how to replace the external screen housing of the device.

Written By: Oscar



# INTRODUCTION

Replace a cracked exterior screen or damaged front exterior by replacing the screen housing.



## TOOLS:

- [Spudger](#) (1)
  - [Phillips #00 Screwdriver](#) (1)
  - [iFixit Opening Tools](#) (1)
-

## Step 1 — Body Disassembly



- Power off the device by holding down the red button labeled PWR.
- ⚠ Be sure that the phone is powered off before touching the battery to avoid danger.
- Remove the battery pack cover by pushing down on the solid lines at the top end of the cover. Slide the cover down while still applying the pushing force on the top and remove the cover completely.

## Step 2



- Place your finger into the semicircle gap on top of the battery.
- Push down and pull so the battery pops out of the phone.



### Step 3



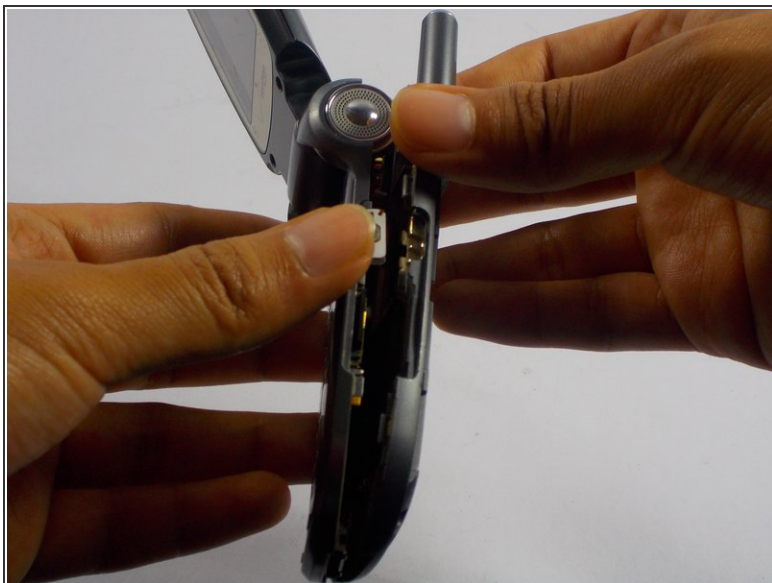
- Remove the two rubber pads blocking two screws at the top of the phone near the hinge using tweezers.

### Step 4



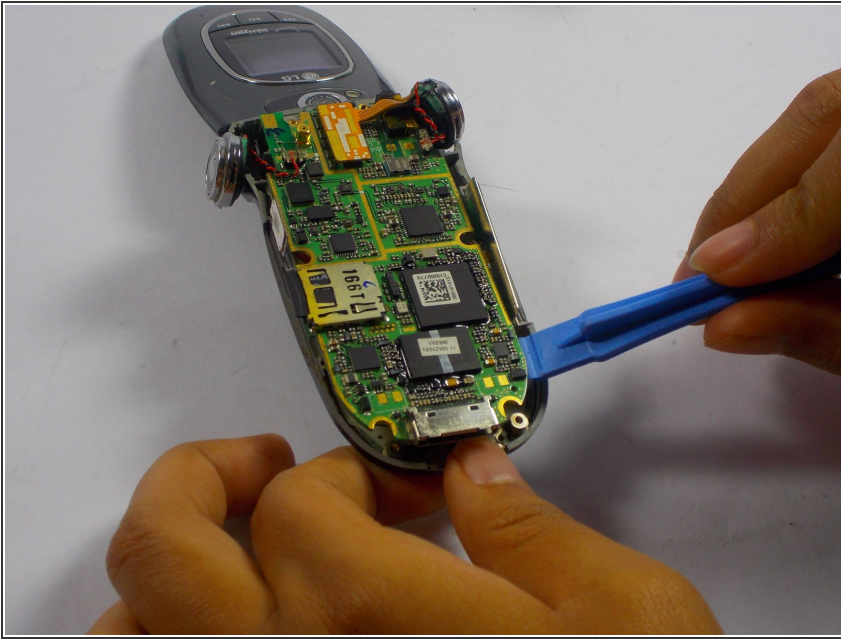
- Remove all four 3mm Phillips #00 screws from the back of the phone.

## Step 5



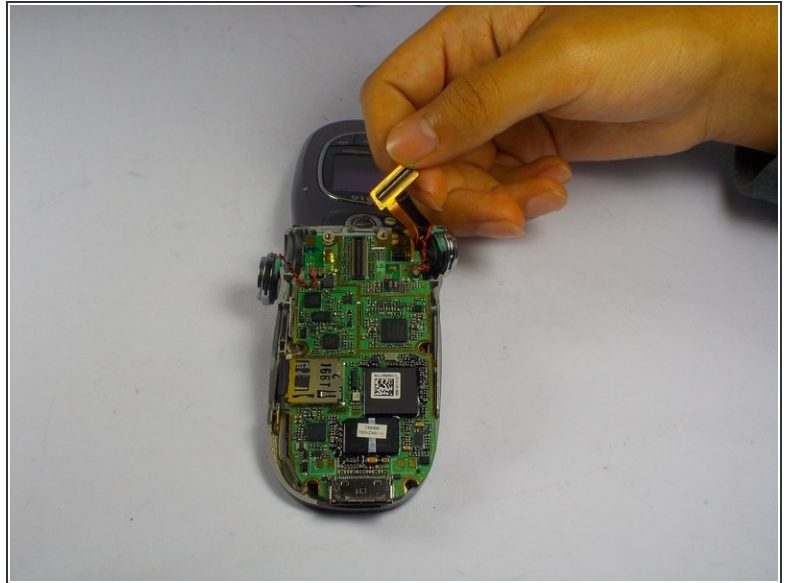
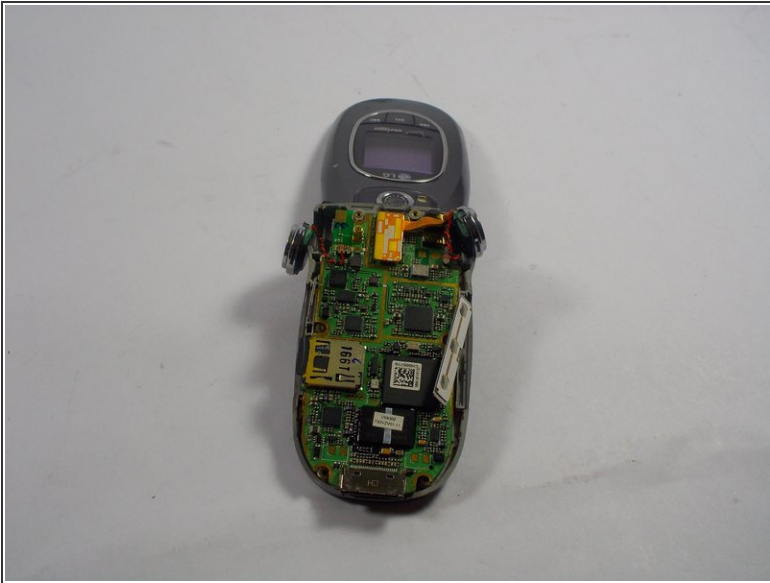
- Use your fingers to gently separate the front plate from the phone. You may need to slide a plastic opening tool along the crevice between the faces to separate it more easily.
- Remove the casing after it has been detached leaving the logic board fully accessible.
- ⓘ The volume and camera buttons are free to move around after the case has been opened. Be careful not to lose any loose pieces when continuing.

## Step 6 — Screen Housing Replacement



- Hold the body firmly in one hand. Lift up on the charging apparatus to begin separating the logic board from the front body case. **Hold the body of the phone in one hand. Use a screwdriver to lift up the charging apparatus separating the logic board from the front body case.**
- Use a plastic opening tool to gently lift the board out of the case. The board is secured by six holes around its perimeter and will become free when pried from the supports. **Readers might not know what a plastic opening tool is. Use a screwdriver for this step.**

## Step 7



- Remove the ribbon cable by pulling up with your finger around the orange border. / **Make a close up of the ribbon cable and draw an arrow pointing to it.**



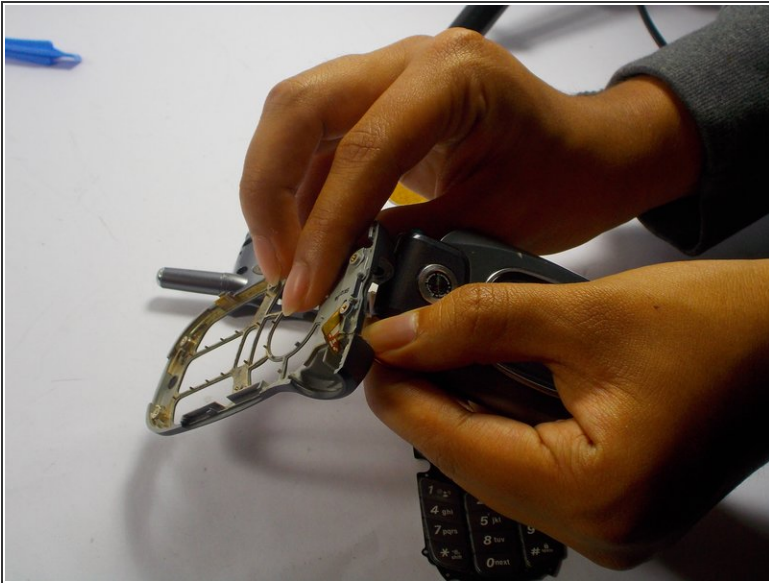
## Step 8



- Hold the phone securely in your left hand by placing your thumb on the flipping hinge and wrapping your fingers around the back of the device. **/Securely hold the phone in your left hand by placing your thumb on the screen. Wrap your fingers around the hinge and the back of the phone.**
- Use your right hand to apply a pushing force on the right flange near the flip hinge. **/Use your right hand to apply force by pushing on the right flange near the hinge.**
- Keep applying the force until the top half of the phone can be removed from the bottom half by then pulling towards you. **/Keep applying that force until the top half of the phone is removed from the bottom half. Pull the bottom half towards you to completely separate both parts of the phone.**



## Step 9



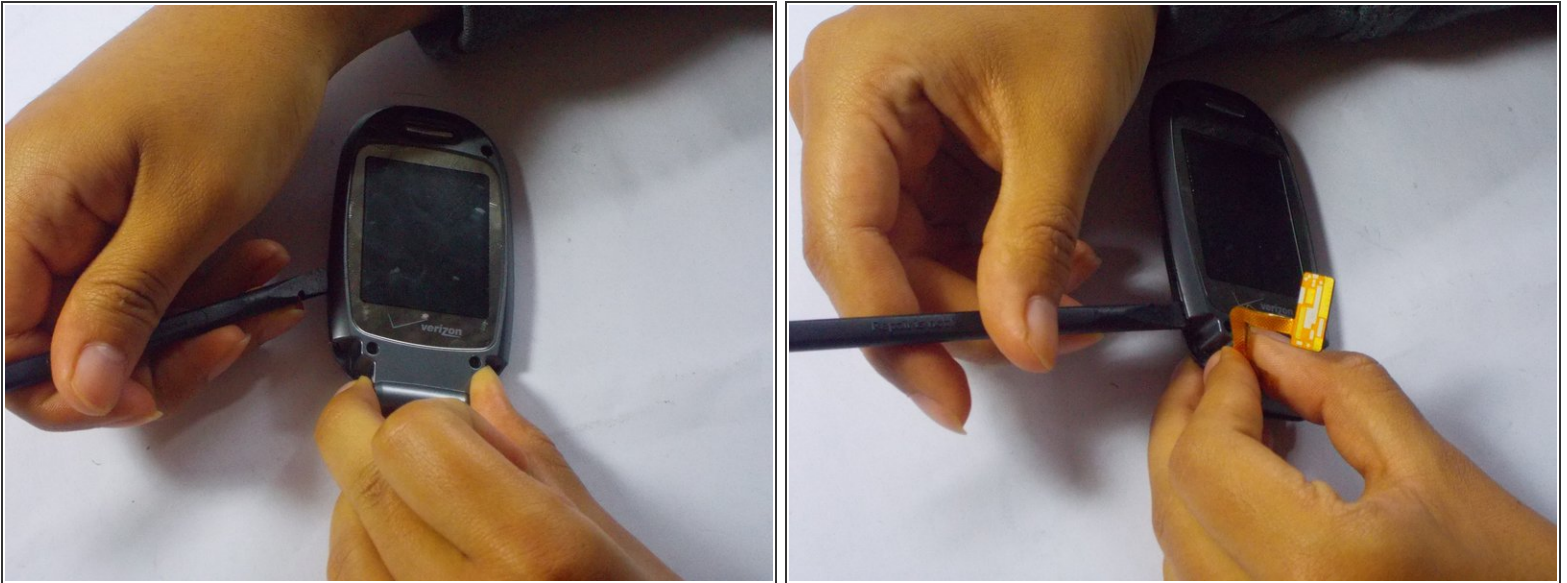
- Slide the ribbon cable out through the slot in the housing. /**Take a close up of the picture for a better view of the ribbon cable.**

## Step 10



- Remove the 4 rubber pads located on the corners of the internal screen. **/Draw visible arrows to point at the rubber pads in the picture for the reader's sake.**
- Remove the 4 2mm diameter 3mm long PH screws located under the rubber pads using a PH00 screwdriver. **/Take a close up of the screws.**

## Step 11



- Use the black spudger along the seam of the now removed top half of the phone. Guide the spudger along the seam line to slowly prop the two pieces from each other. **Use the black spudger along the seam of the top half of the phone. as shown in the picture. Guide the spudger along the seam to pry apart the two pieces of the top half.**



## Step 12



- Separate the external screen housing with your hands. **/No edits necessary.**
- Replace the old screen housing with the new one and snap it together with the other half of the housing to complete the replacement. **/Take a close up of this picture for a better view .**

To reassemble your device, follow these instructions in reverse order.