



LG Vortex Rear Facing Camera Replacement

How to replace the camera on the LG Vortex

Written By: Jen



INTRODUCTION

Follow the initial LG Vortex Disassembly guide before you begin camera replacement. This guide takes you step-by-step through the replacement of the LG Vortex camera.



TOOLS:

- [container](#) (1)
- [iFixit Opening Tools](#) (1)
- [Soft Cloth](#) (1)
- [Phillips #00 Screwdriver](#) (1)



PARTS:

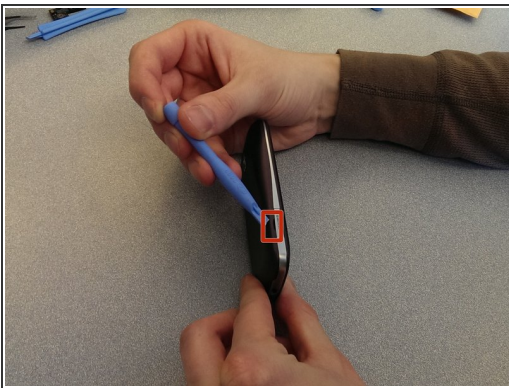
- [LG Vortex Replacement Camera](#) (1)

Step 1 — Disassembly of LG Vortex



- Power the phone off
- The power button is located on top of the phone

Step 2



- Find the two thumbnail ridges on the side and top of the phone.
- One is next to the micro SD slot and the other at the top of the phone
- Once the ridges are located, use the blue plastic opening tool to pry the back cover away from the rest of the phone.
- Remove the back cover and set it to the side.

Step 3



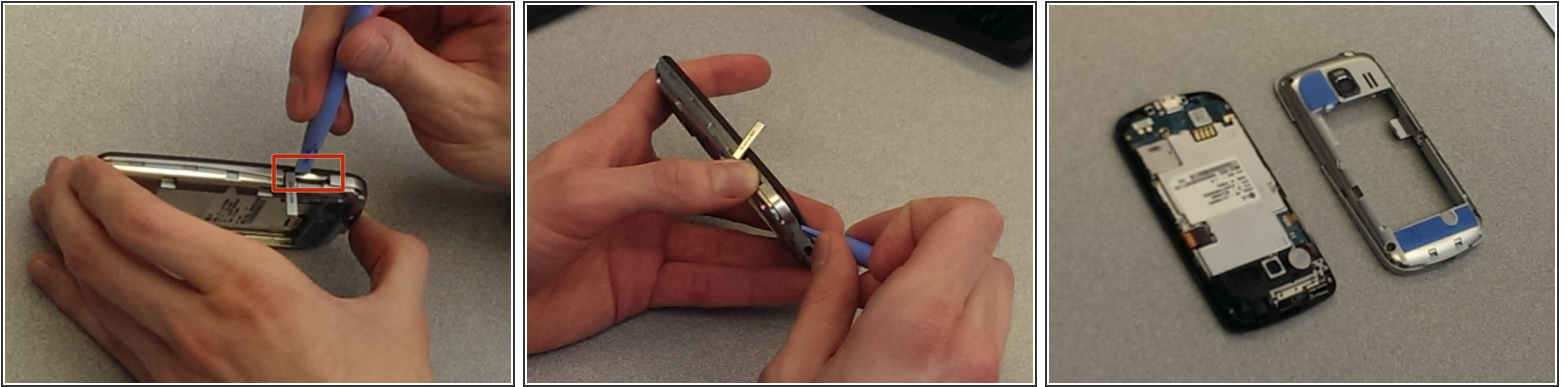
- Remove the battery using the blue plastic opening tool.
- There is a small thumbnail ridge at the top left corner of the battery for ease of removal.
- Put the battery aside.

Step 4



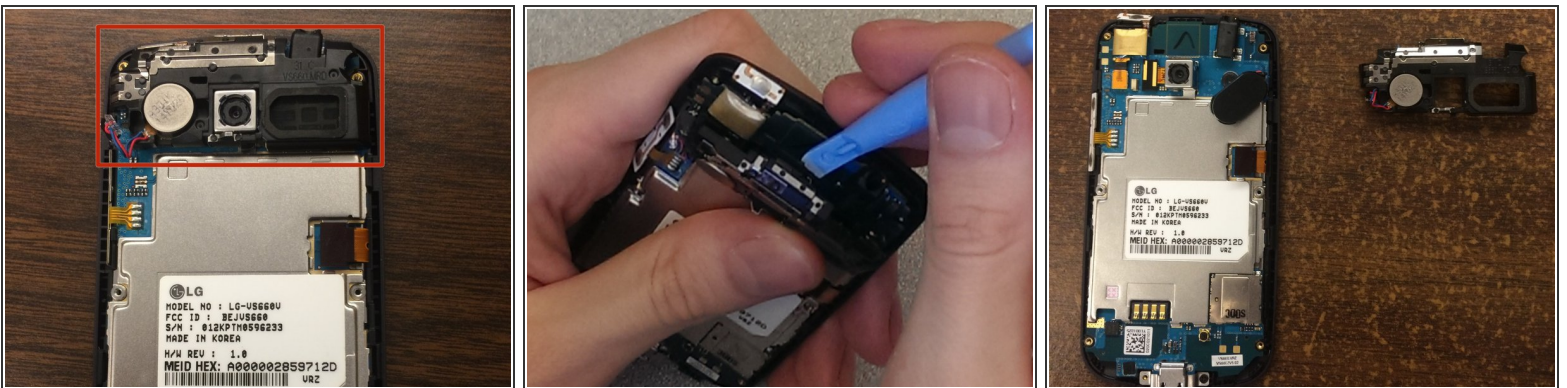
- NOTE: All screws are the same size
- Use the precision screwdriver head #00 to remove the 6 screws along the edges of the phone.
- There are 2 screws at the top in each corner, 2 in the middle on the sides, and 2 in the bottom corners.
- Place the screws in the small container to ensure they aren't lost.

Step 5



- Use the blue plastic opening tool to remove the back frame from the rest of the phone.
- Pry at the micro SD slot. Push the cover for the SD slot away from the front of the phone and pry the back frame away from the rest of the phone.
- Pry your way around the entire phone to separate the face from the frame.

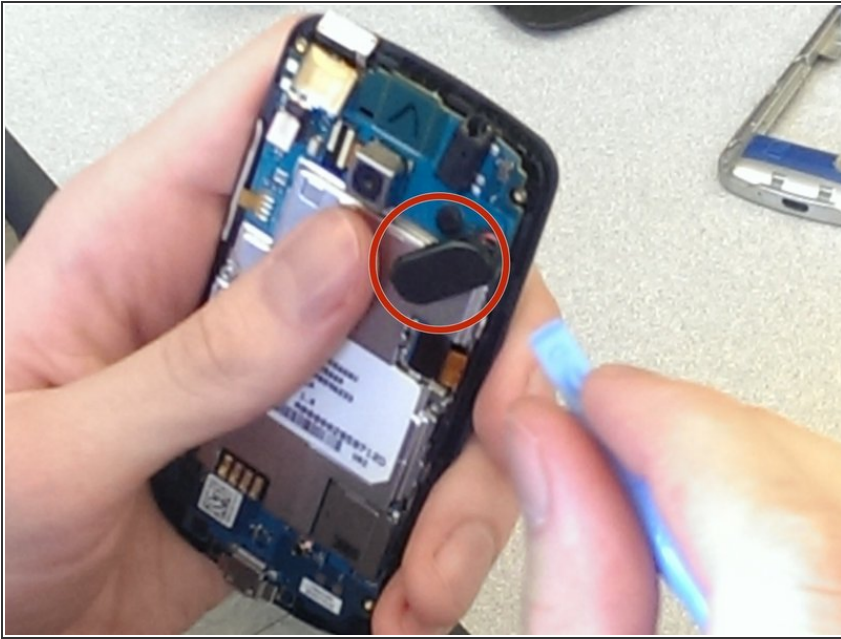
Step 6 — Rear Facing Camera



- NOTE: This is the most difficult step.
- Locate system board (silicone board with all of the circuitry on it). Notice that there is a black piece at the top of the system board (with the camera in it).
- Use the pry bar to push the 2 black tabs away from the system board (located on the sides of the board). These tabs may snap back onto the board, so attempt to hold them off of the board.
- Use the pry bar to pry the black piece at the top of the phone (looks to be attached to the system board, but is not).

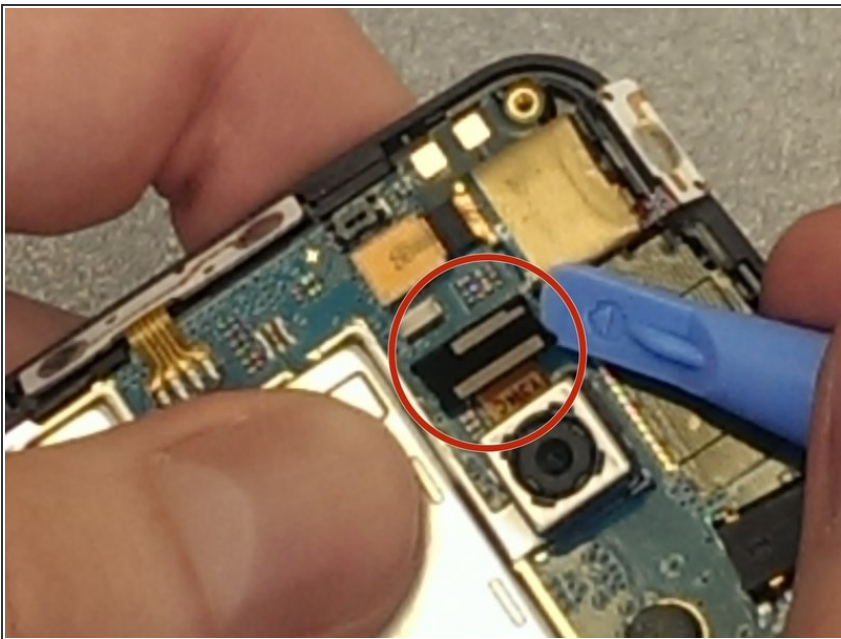
This document was generated on 2019-09-16 02:32:54 PM (MST).

Step 7



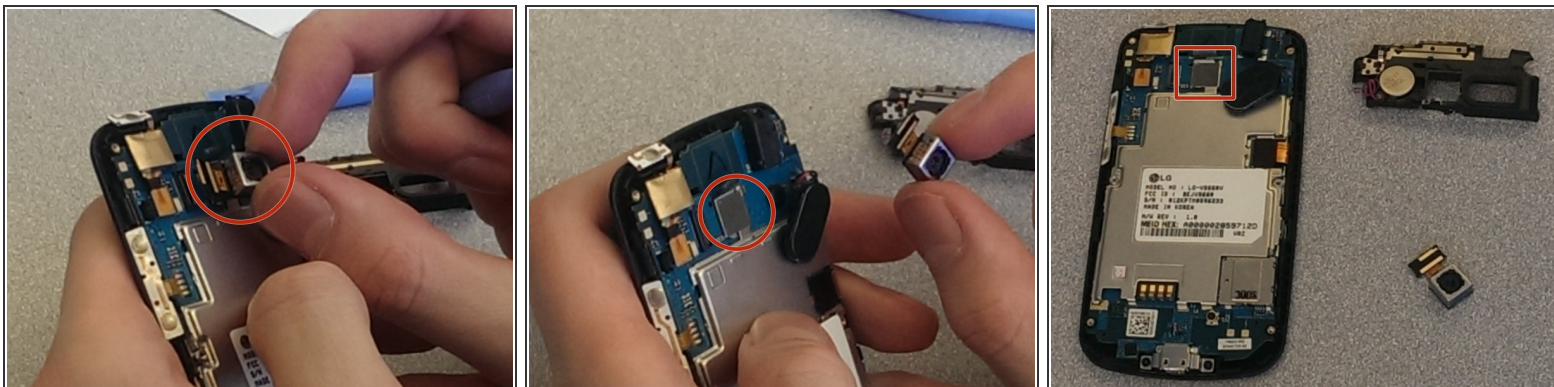
- NOTE: Do not damage the thin wires attaching the motherboard to the speakers
- ⚠ Using the blue plastic prying tool remove the black piece next to the camera.

Step 8



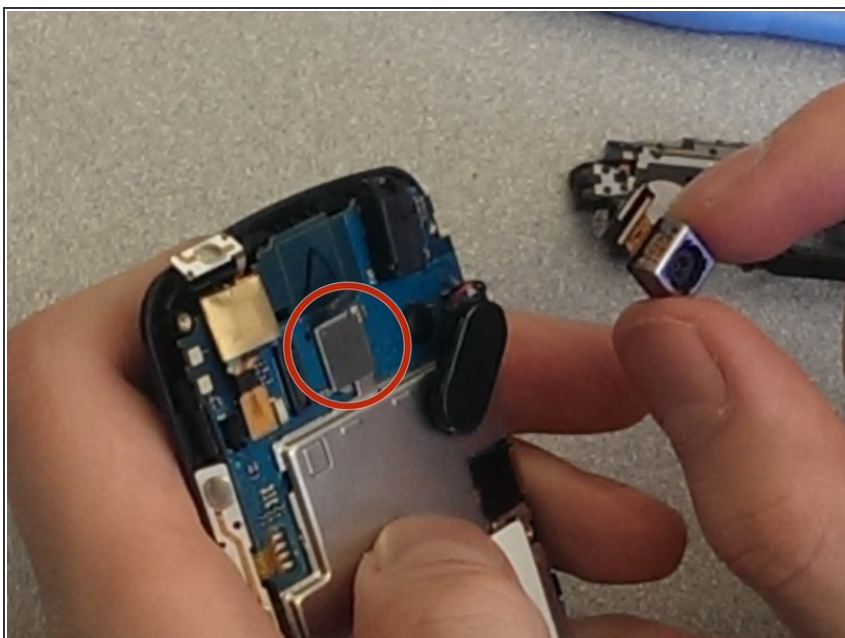
- NOTE: Remove with caution.
- ⚠ Disconnect the cord attaching the camera to the system board.
 - (It looks like a thin piece of plastic)

Step 9



- The camera is held on by 1 sticker on the top of the camera.
 - Remove this sticker using your fingernail.
- ⚠ Pull the camera off the system board using your fingers. Perform this step with caution.

Step 10



- Place new camera in the same location, and place the sticker back on its side.

Step 11



- Reverse the steps to reassemble the phone.

To reassemble your device, follow these instructions in reverse order.