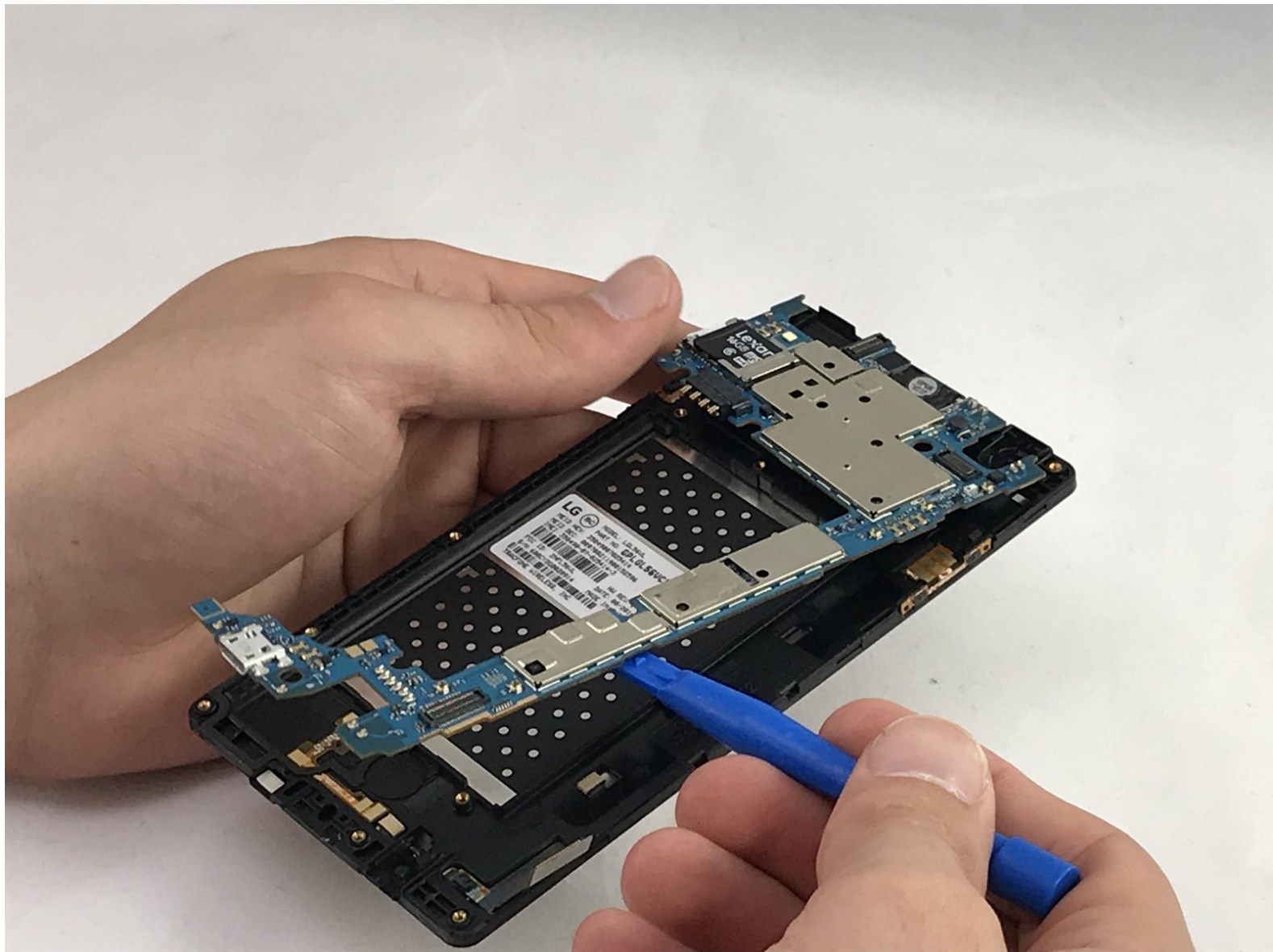




# LG X Style Camera Flash Replacement

This guide will show how to remove a weak or non functioning camera flash.

Written By: cecilia morales



---

## INTRODUCTION

Use this guide to remove the front camera display on your LG device.

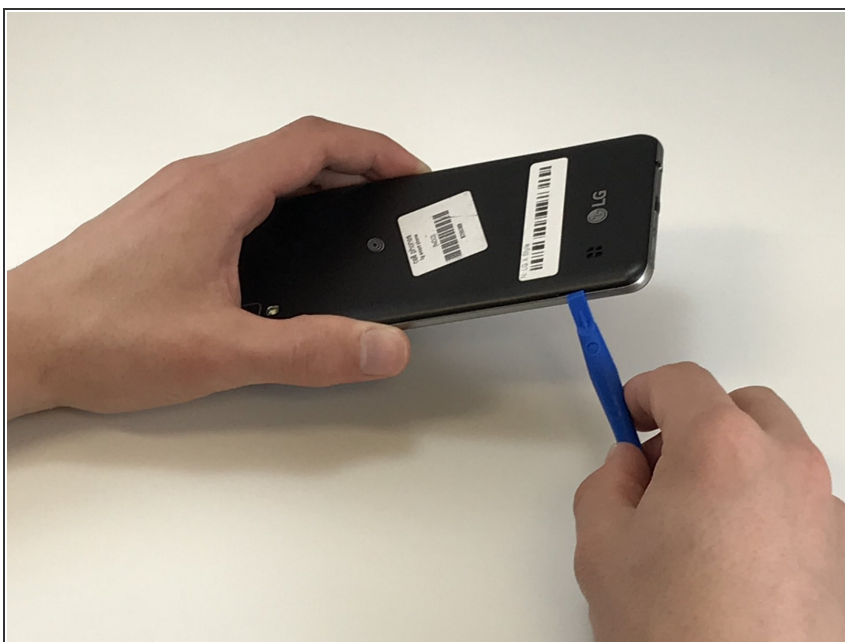
---



### TOOLS:

- [Phillips #000 Screwdriver](#) (1)
  - [Tweezers](#) (1)
  - [iFixit Opening Tools](#) (1)
-

## Step 1 — Battery



- Power down the device and make sure that it is turned off.
- Insert the plastic opening tool into the bracket space on the back bottom left of the phone.
- Gently twist tool clockwise until the back case pops open [this will create a small gap].
- Slide the tool along the gap around the entire device.

## Step 2



- Insert the plastic opening tool into the indent below the battery, and pry up to lift and remove the battery.



## Step 3 — Screen



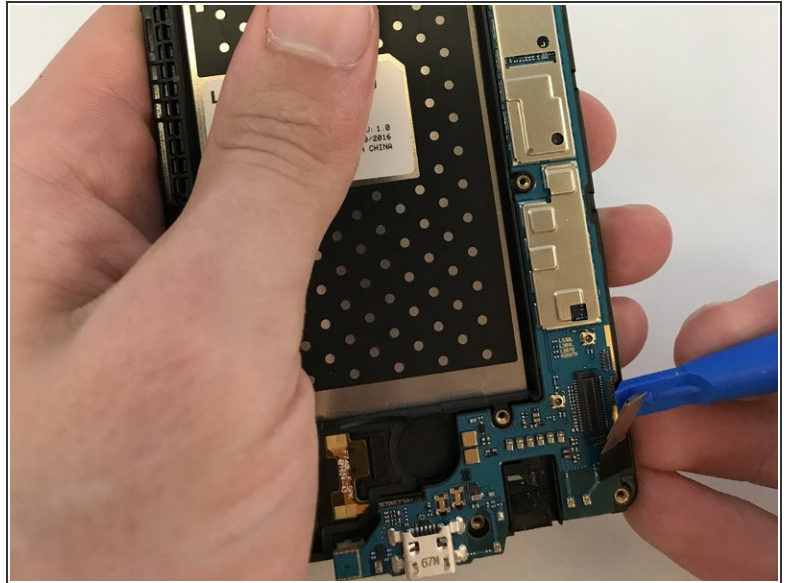
- With a Phillips #000 screwdriver, remove the twelve 3mm screws.

## Step 4



- Create a gap with plastic opening tool by applying pressure between glass screen and plastic edge of device.
- Slide prying tool around entire device beginning toward the top.
- Lift off and remove the screen from the device.

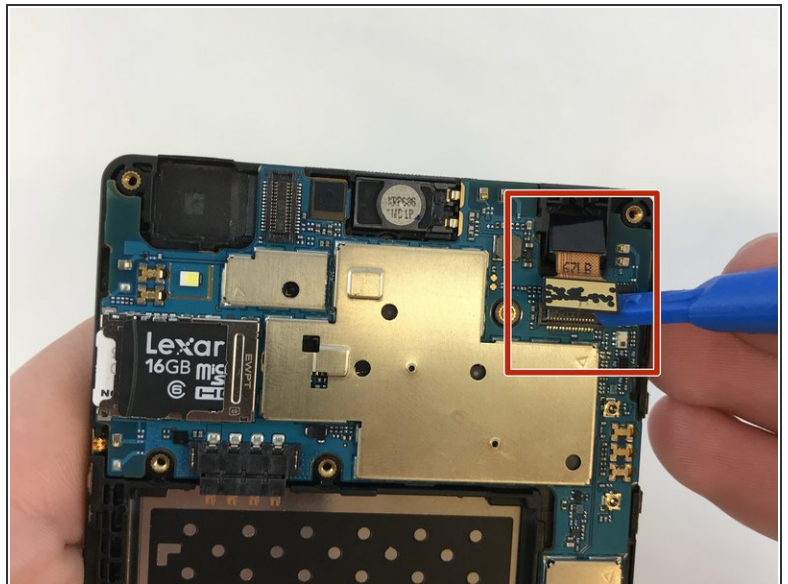
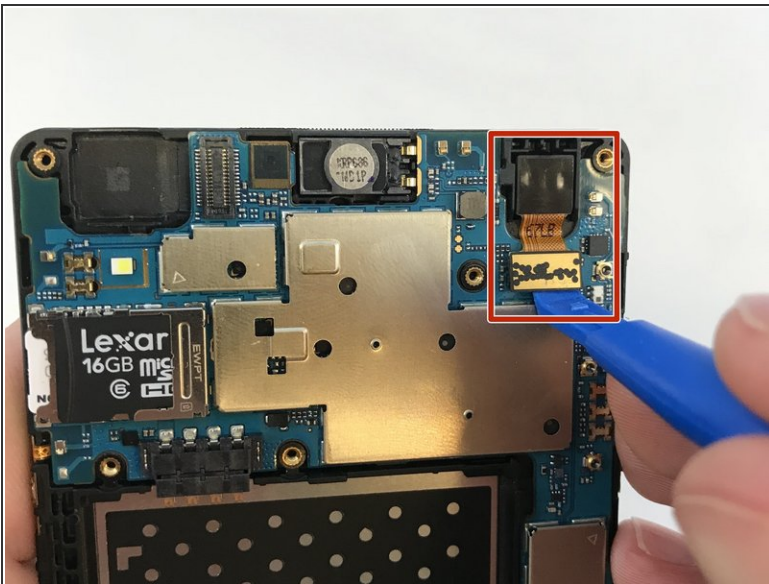
## Step 5 — Camera Flash



- Using a plastic opening tool, lift up display connection until disconnected from the lower right hand of the phone.

⚠ Carefully lift the metal connection perpendicular to the mother board.

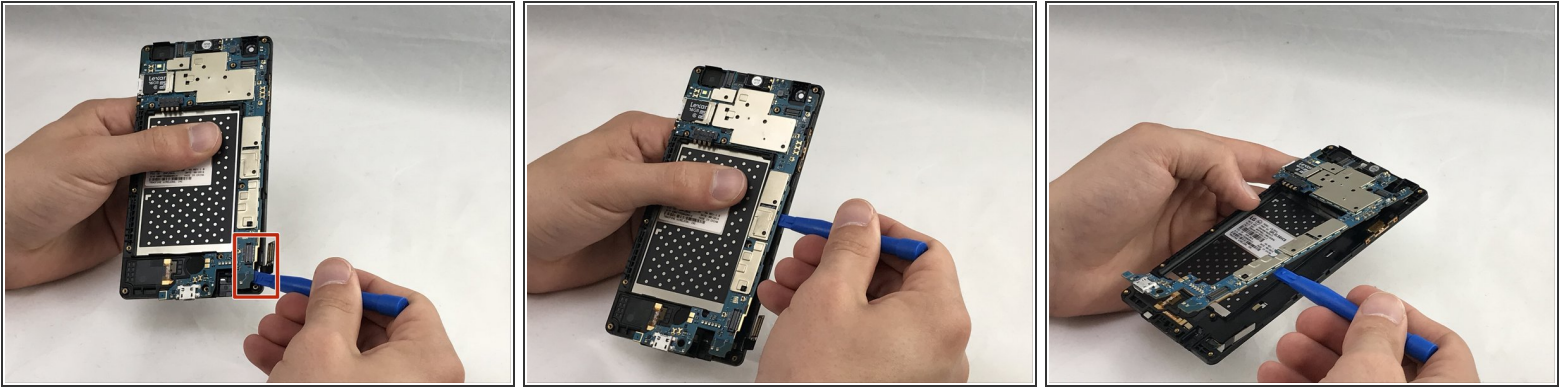
## Step 6



- Gently lift the camera ribbon cable until the entire front camera housing is removed.



## Step 7



- Use the opening tool, gently pry up along the edge of the motherboard.
- Gently pull up and remove the motherboard from the device.

To reassemble your device, follow these instructions in reverse order.