



# LG env2 vx9100 Front Panel Replacement

This guide details the steps to removing and installing the front cover.

Written By: Reed Williston



---

# INTRODUCTION

In this guide you will be removing the front panel from the rest of the phone.




## TOOLS:

- [Phillips #0 Screwdriver](#) (1)
  - [Spudger](#) (1)
-

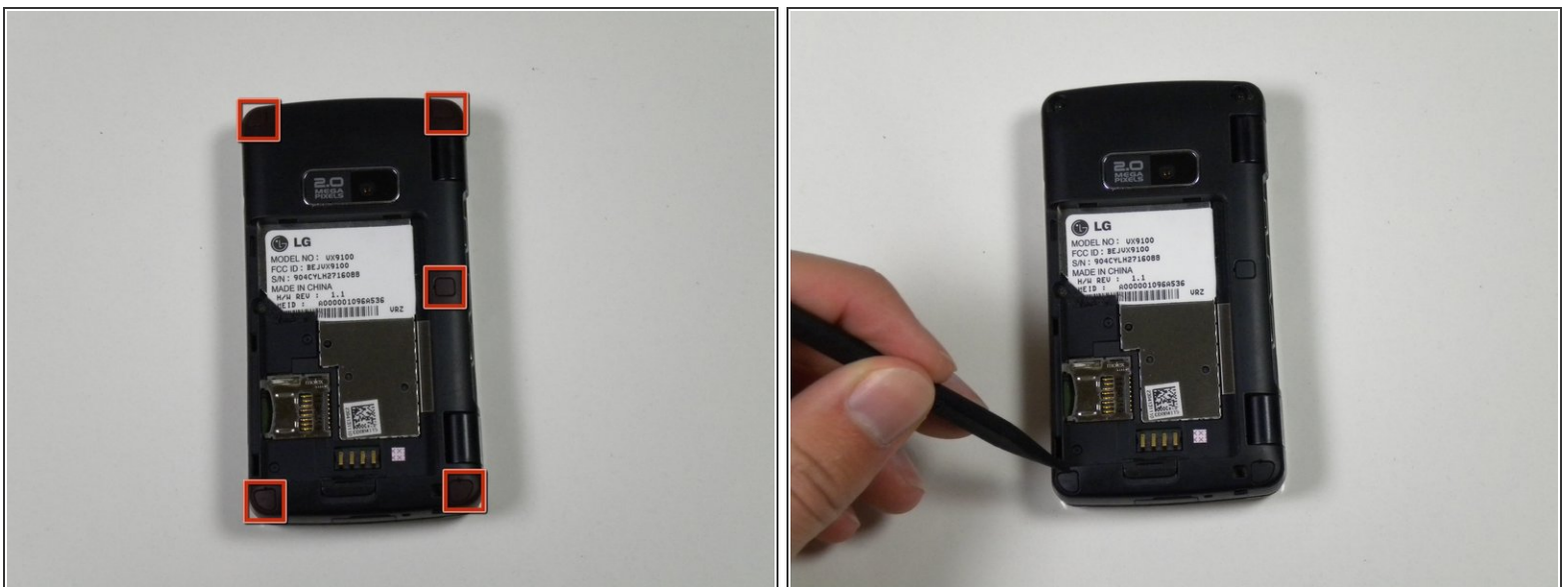
## Step 1 — Battery



 Before disassembling your phone, be sure it is powered off to avoid minor electric shock or possible fire.

- Place the phone facedown on the table.
- Use your fingernail (or a small screw driver) to pull down the tab below the battery.
- Lift the battery out.

## Step 2 — Back Panel



- Locate the five rubber covers on the back panel of the phone.
- Use the metal probe to pop out each rubber cover to reveal the screws underneath.

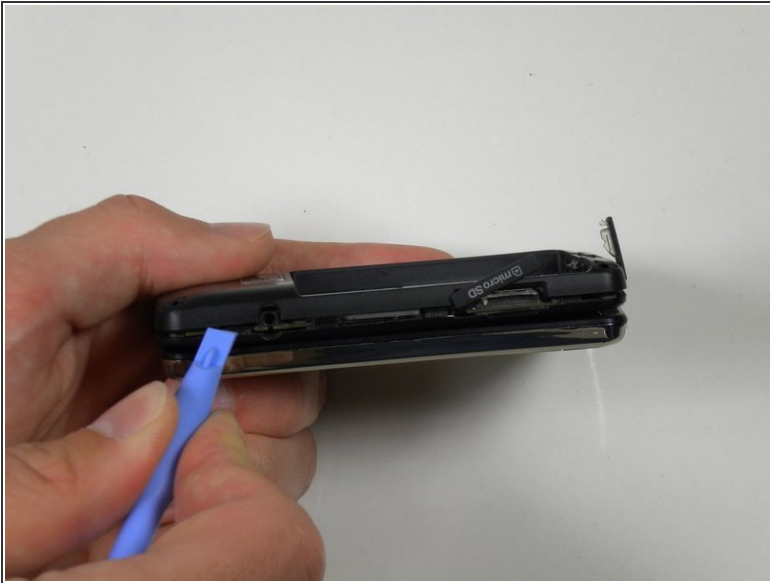
## Step 3



- Locate the six 2.5mm screws on the back panel of the phone.
- Use a #00 Phillips screwdriver to remove each 2.5mm screw.



## Step 4



- Locate the seam around the edge of the phone.
- Insert the plastic opening tool into the seam and pry gently to release the tabs.
- Work your way around the phone until all tabs are released.
- Remove the back panel of the phone.

## Step 5 — Front Panel



- Locate the rubber covers at the top two corners of the inside of the phone.
- Use the metal probe to remove the rubber covers to reveal the 2.5mm screws.

## Step 6



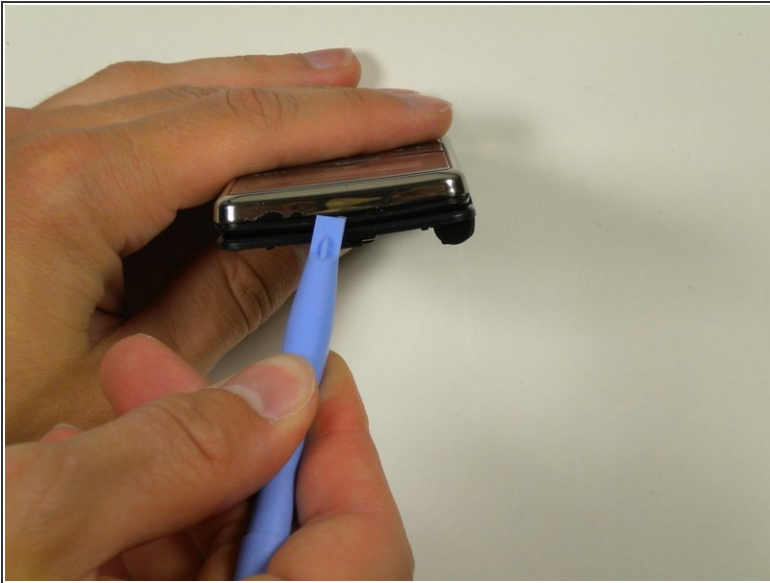
- Locate the 2.5mm screws that were underneath the rubber covers.
- Use a #00 Phillips screwdriver to remove both 2.5mm screws.

## Step 7



- Locate the two 2.5mm screws at the bottom two corners of the inside of the phone.
- ⓘ These screws will not be visible or accessible unless the 2 sides of the phone are at approximately 90 degrees relative to each other.
- Use a #00 Phillips screwdriver to remove both 2.5mm screws.

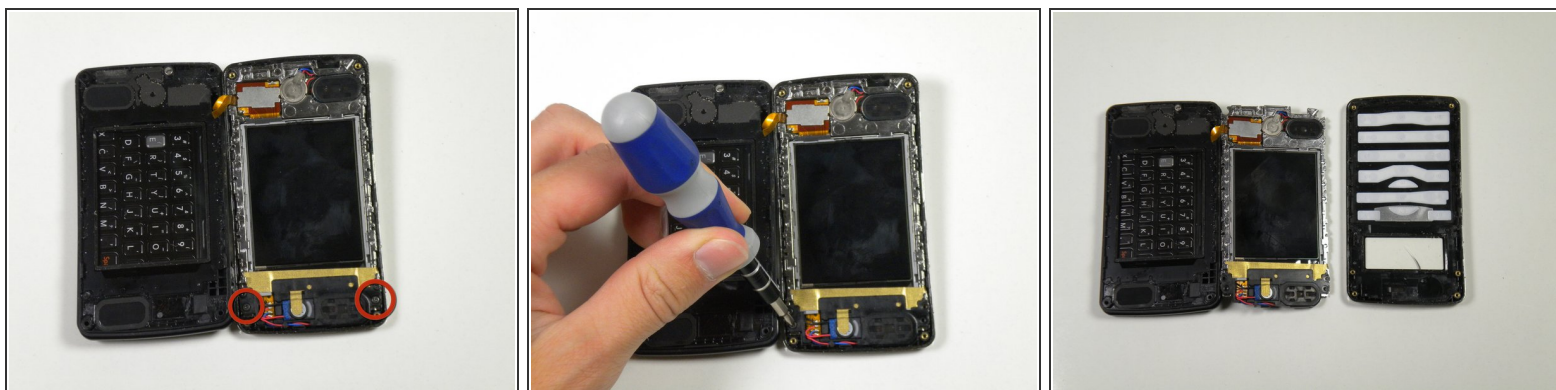
## Step 8



- Locate the crease that travels all around the edge of the phone.
  - Wedge the plastic opening tool in the crease and move it along each edge of the phone.
  - Separate the front panel from the rest of the phone.
- ⚠ Be careful not to damage the orange ribbon that connects to the logic board through the hinge in the phone. If the ribbon is damaged, the phone will not function properly.
- Open the phone to reveal the inside monitor.



## Step 9



- Locate the two 2.5mm screws to the right of the screen (on the photograph shown they are at the bottom).
- Use a #00 Phillips screwdriver to remove each 2.5mm screw.
- Using your hands separate the front panel from the phone by carefully pulling it straight off.

To reassemble your device, follow these instructions in reverse order.