



LG env2 vx9100 Inside Keyboard Replacement

This guide contains instructions on accessing and installing the inside keyboard.

Written By: Reed Williston



INTRODUCTION

In this guide you will be removing the back panel and motherboard to access and remove the inside keyboard.




TOOLS:

- [Phillips #0 Screwdriver](#) (1)
 - [Spudger](#) (1)
-

Step 1 — Battery



 Before disassembling your phone, be sure it is powered off to avoid minor electric shock or possible fire.

- Place the phone facedown on the table.
- Use your fingernail (or a small screw driver) to pull down the tab below the battery.
- Lift the battery out.

Step 2 — Back Panel



- Locate the five rubber covers on the back panel of the phone.
- Use the metal probe to pop out each rubber cover to reveal the screws underneath.

Step 3



- Locate the six 2.5mm screws on the back panel of the phone.
- Use a #00 Phillips screwdriver to remove each 2.5mm screw.

Step 4



- Locate the seam around the edge of the phone.
- Insert the plastic opening tool into the seam and pry gently to release the tabs.
- Work your way around the phone until all tabs are released.
- Remove the back panel of the phone.

Step 5 — Inside Keyboard



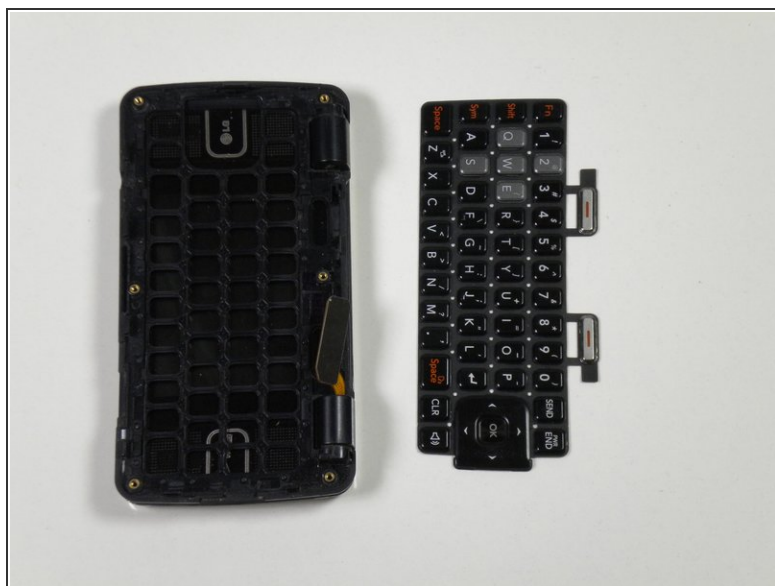
- Locate the silver strip connected to the logic board. The silver strip is closest to the bottom hinge of the phone.
- Wedge the plastic opening tool in between the silver strip and the logic board.
- Lift the plastic opening tool to separate the silver strip from the logic board.

Step 6



- Wedge the plastic opening tool in between the logic board and the phone.
- Lift the plastic opening tool to separate the logic board from the phone.

Step 7



- Locate the back of the inside keyboard.
- Take out the inside keyboard. You may need to use your fingernail to pull one of the corners up.

To reassemble your device, follow these instructions in reverse order.