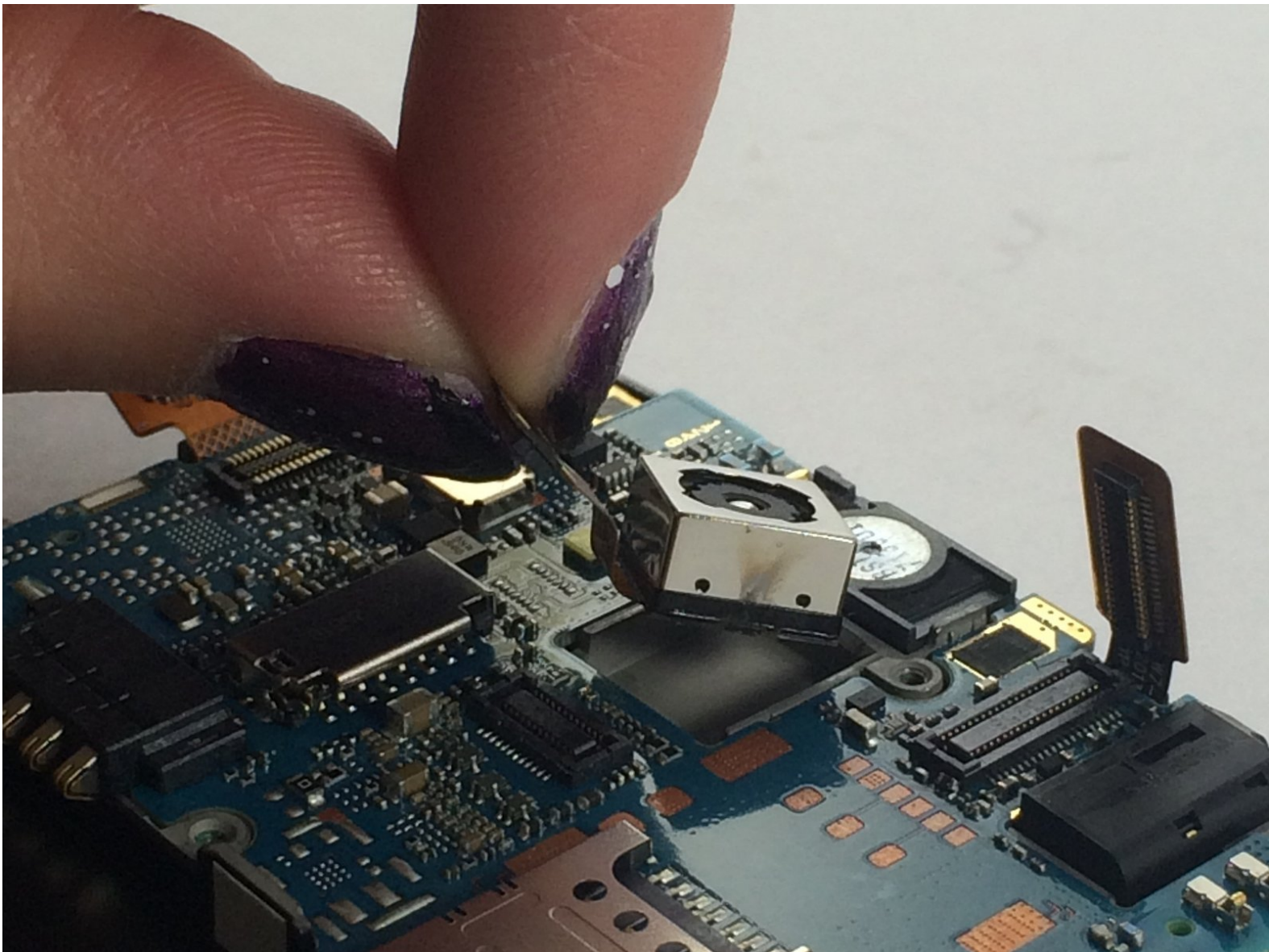




# LG optimus L90 Midframe Replacement

Replace the midframe of the LG Optimus L90.

Written By: Alex Arruda



---

## INTRODUCTION

This guide will show you how to replace the midframe of the LG Optimus L90 or remove it to access the phone's internal components.

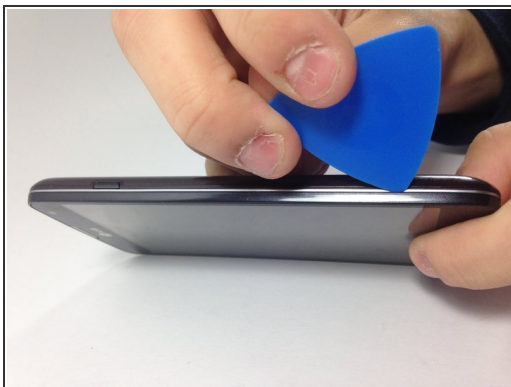
---



### TOOLS:

- [iFixit Opening Picks set of 6](#) (1)
  - [iFixit Opening Tools](#) (1)
-

## Step 1 — Battery



- Carefully slide an opening pick between the the rear cover and the body of the phone.
- Using the pick, separate the cover from the back of the phone.
- Remove the rear cover.

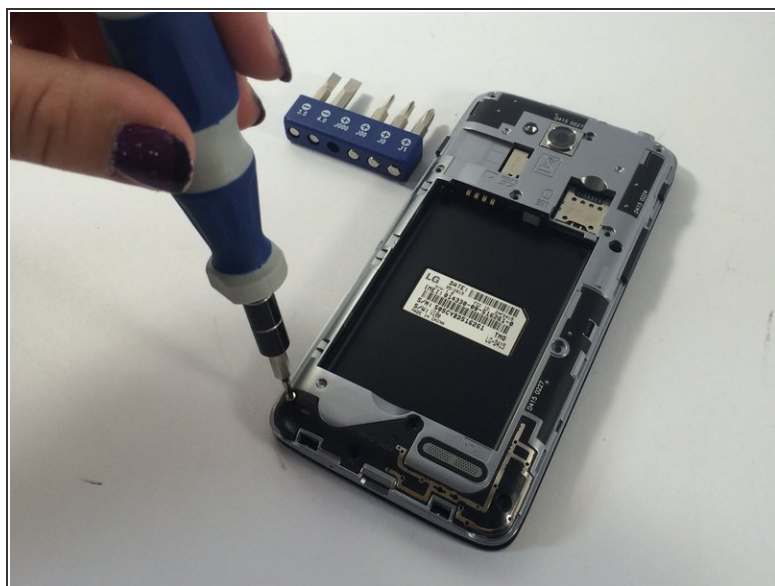
## Step 2



- Insert a plastic opening tool into the small recess at the bottom of the battery.
- Use the plastic opening tool to lift up the bottom of the battery.
- Remove the battery from the phone.

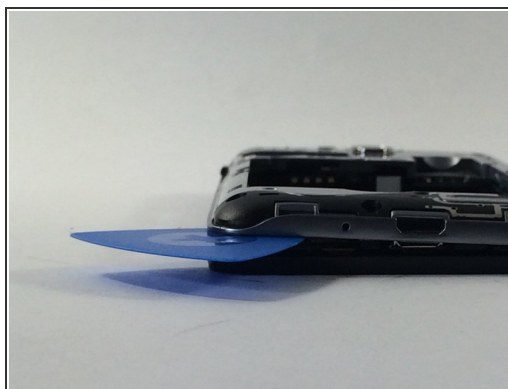
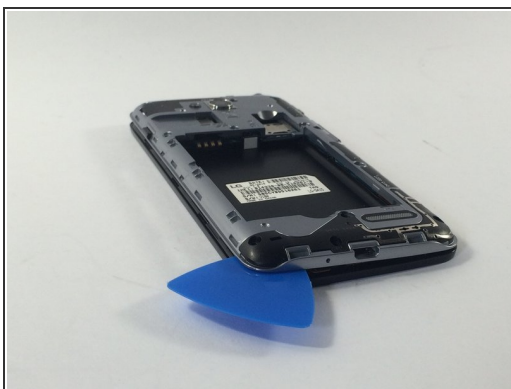


## Step 3 — Midframe



- Remove the eleven JIS #000 screws securing the midframe to the phone.

## Step 4



- Using an opening pick, carefully separate the midframe from the motherboard.

To reassemble your device, follow these instructions in reverse order.