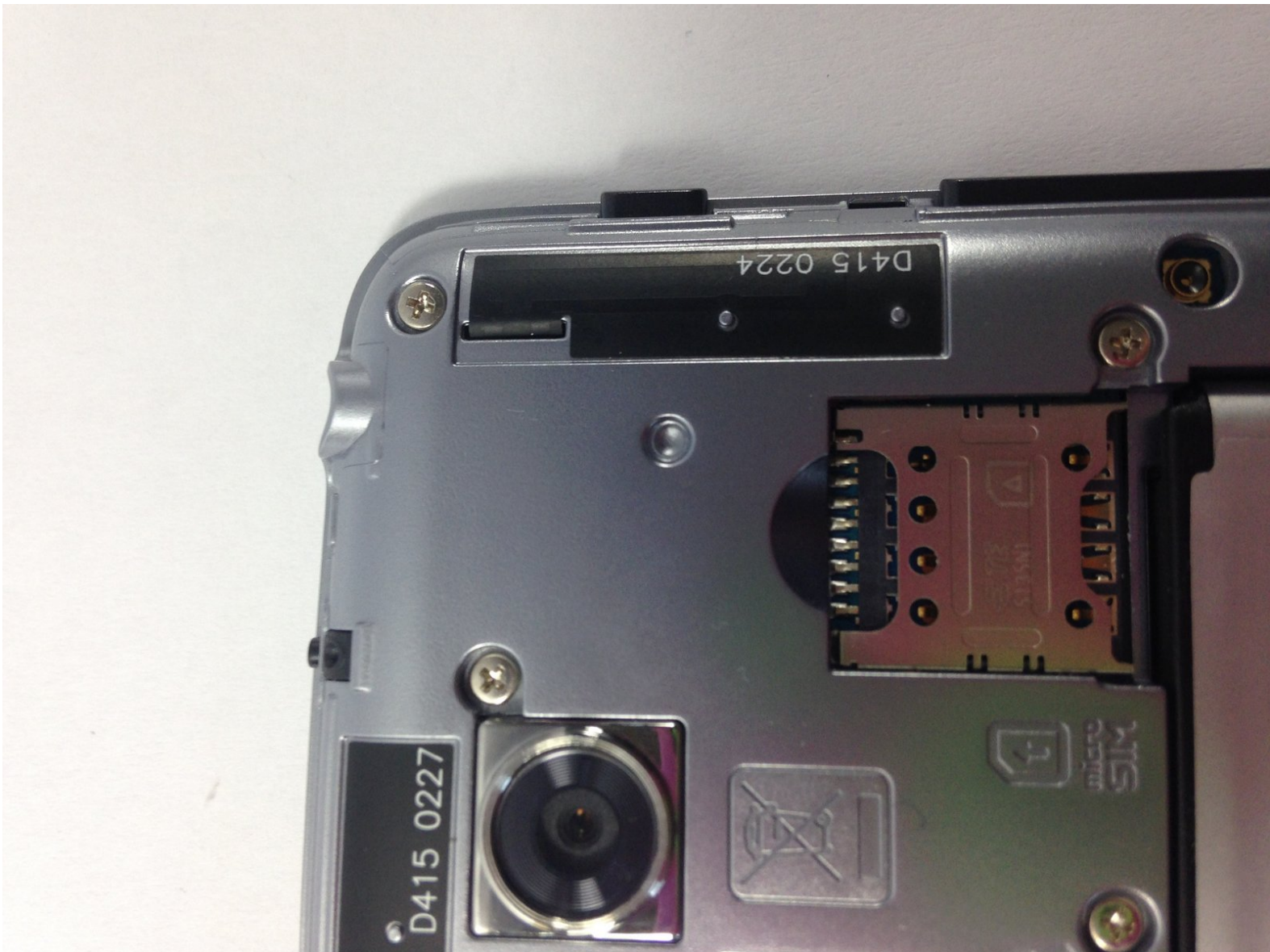




LG optimus L90 SIM card Replacement

Replace the SIM card of your LG Optimus L90.

Written By: Julie



INTRODUCTION

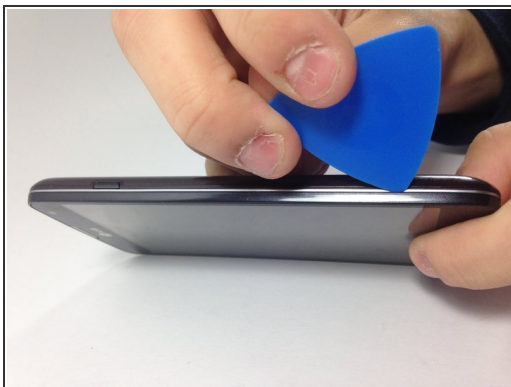
This guide will explain how to replace the SIM card of the LG Optimus L90.



TOOLS:

- [iFixit Opening Picks set of 6](#) (1)
-

Step 1 — SIM card



- Carefully slide an opening pick between the the rear cover and the body of the phone.
- Using the pick, separate the cover from the back of the phone.
- Remove the rear cover.

Step 2



- Remove the micro SIM card from its slot.

To reassemble your device, follow these instructions in reverse order.