



# LG1010 Speaker Replacement

How to replace the speaker in a LG1010 cellular phone.

Written By: Nicholas Schmidt





## TOOLS:

- Flathead 3/32" or 2.5 mm Screwdriver (1)
  - T6 Torx Screwdriver (1)
-

## Step 1 — Speaker



- Remove the two plastic screw covers below the inside phone screen.

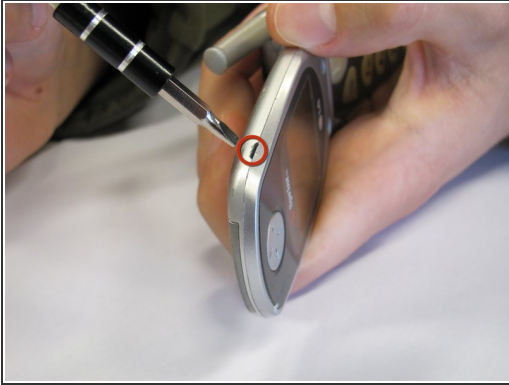
## Step 2



- Unscrew both screws using a Torx T6 screwdriver.

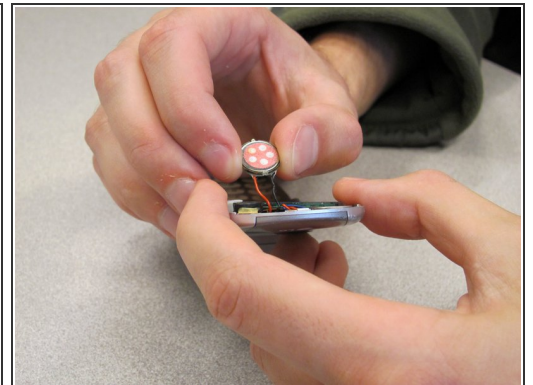
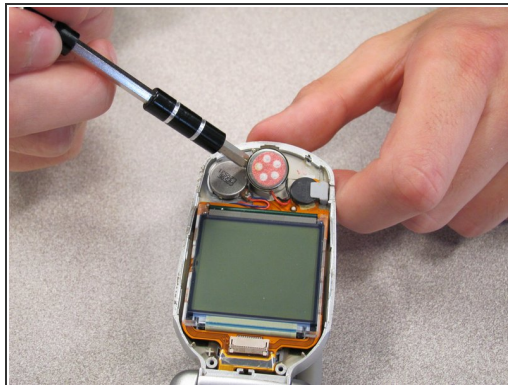
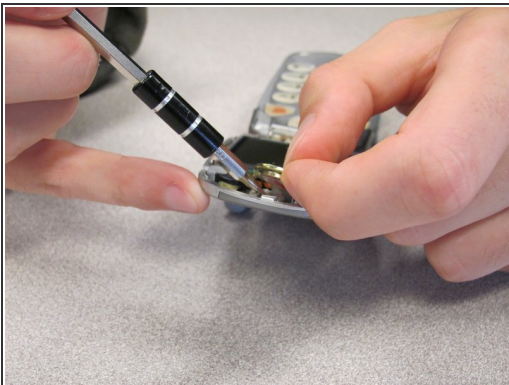


### Step 3



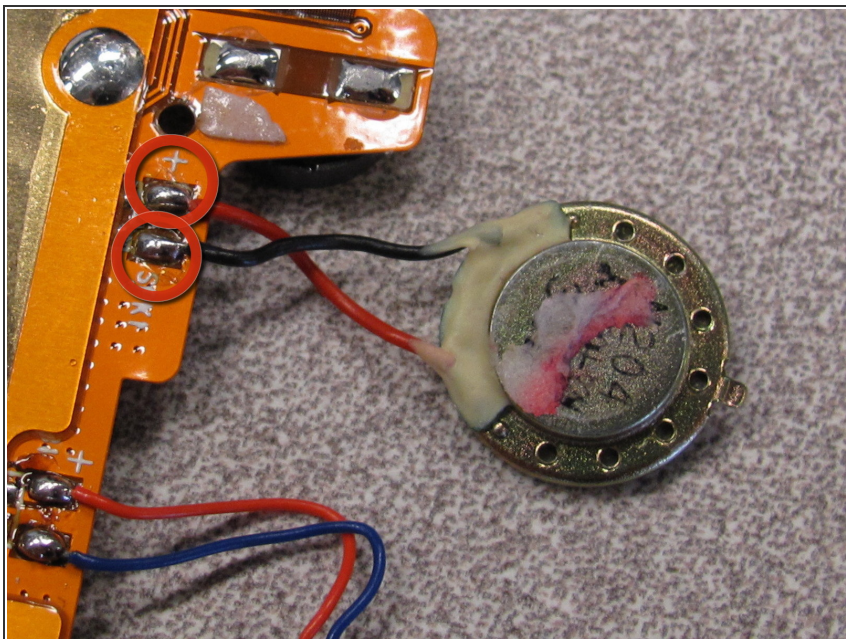
- Pry off the screen front cover with a 3mm flathead screwdriver.

### Step 4



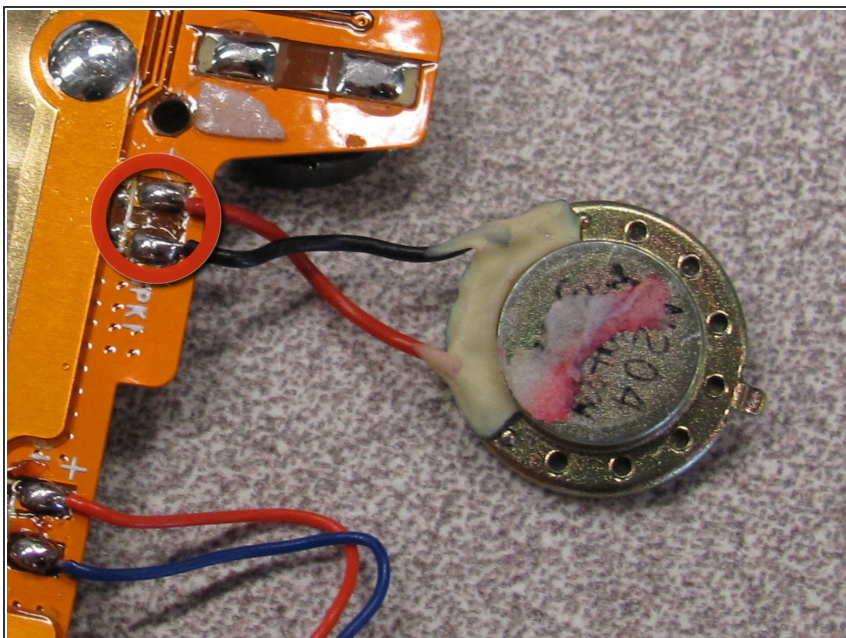
- Pry off the speaker, which is glued onto the front cover, using a small flathead screwdriver.

## Step 5



- Unsolder the black and red wires of the speaker from where they are attached to the base of the screen.

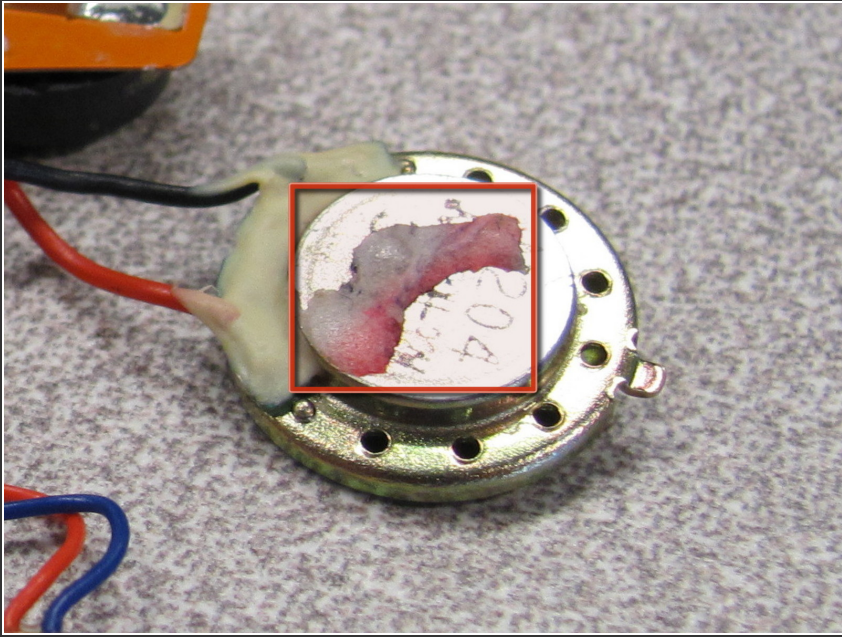
## Step 6



- Obtain replacement speaker and solder the new black and red wires back to the base of the screen.



## Step 7



- Apply glue to the back of the speaker and place it back in its original position.

To reassemble your device, follow these instructions in reverse order.