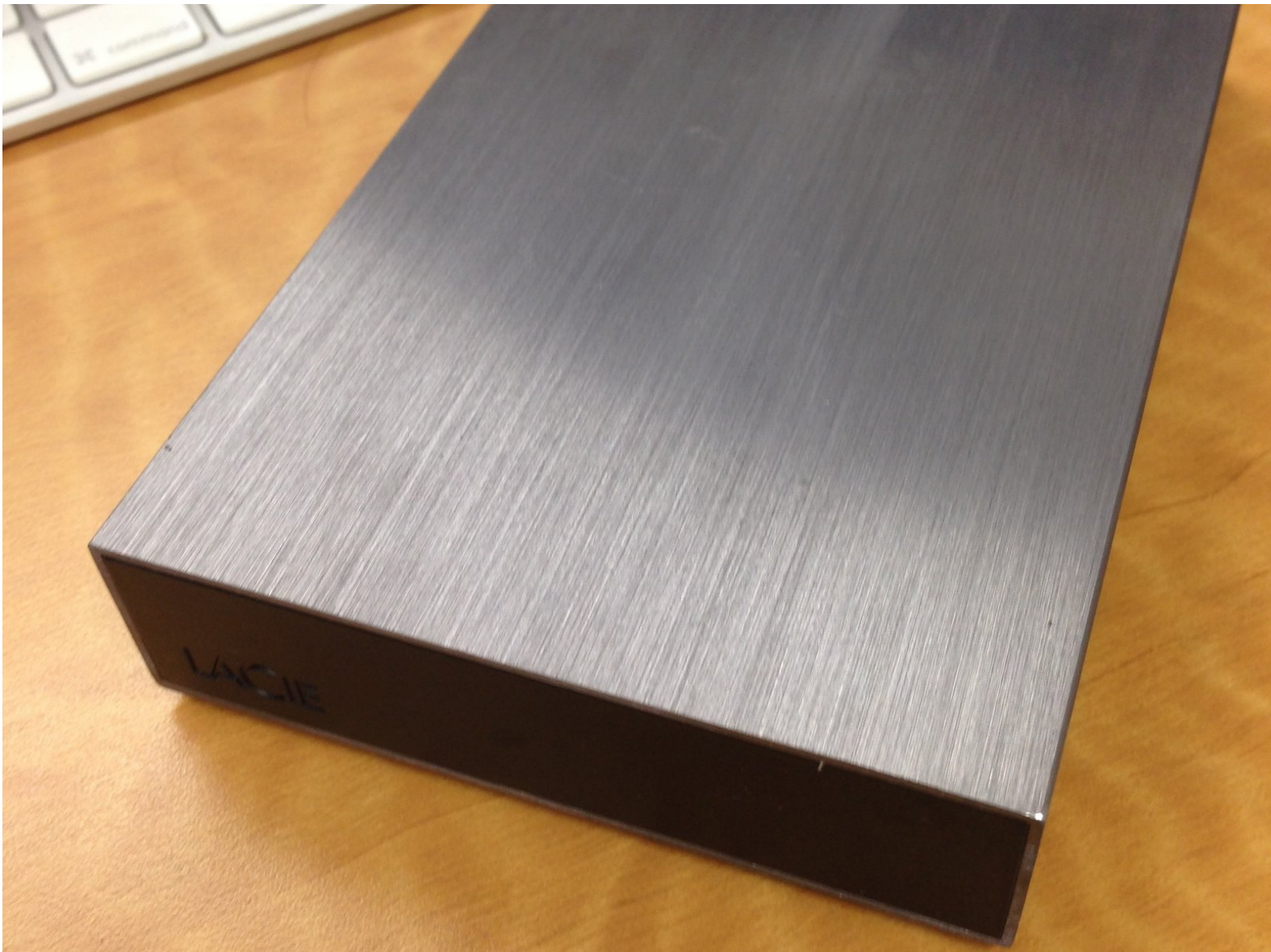




# LaCie Minimus Teardown

How-To remove the internal hard drive contained within the external enclosure.

Written By: Lance Wessel



---

# INTRODUCTION

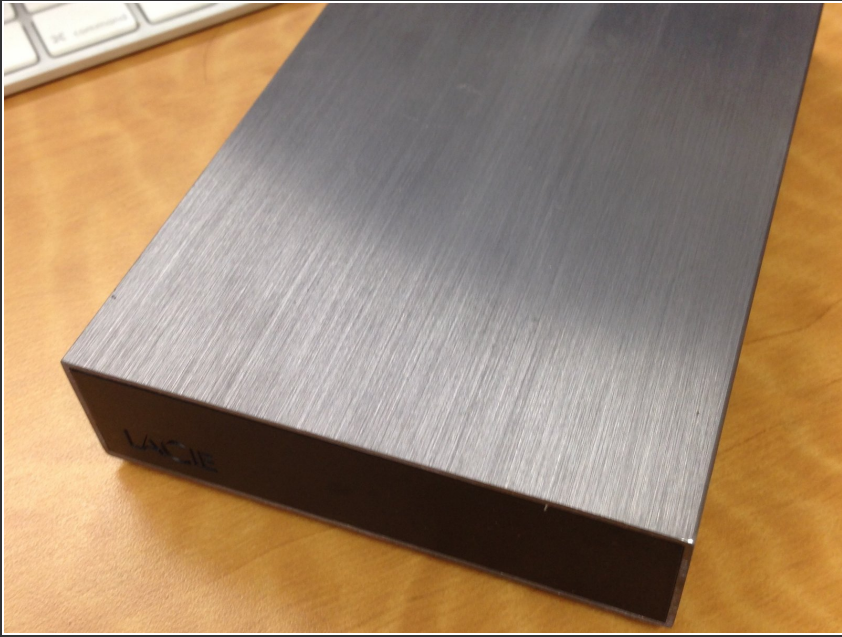
How-To remove the internal hard drive contained within the external enclosure.



## TOOLS:

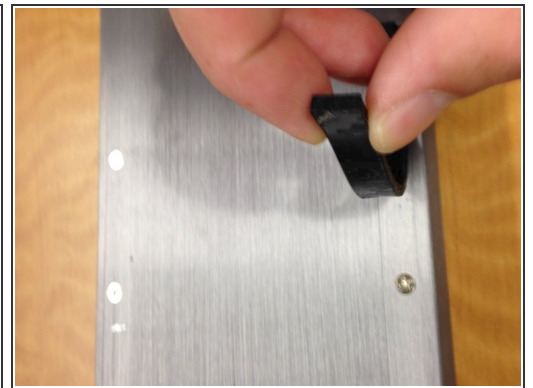
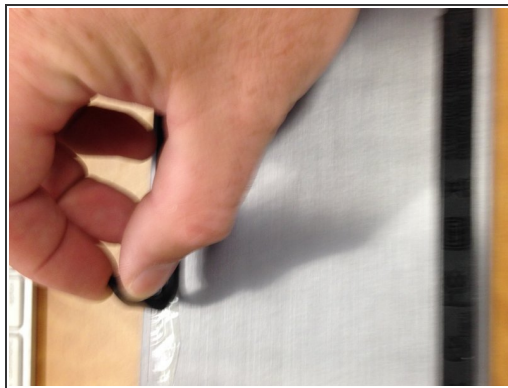
- [Phillips #2 Screwdriver](#) (1)
-

## Step 1 — Hard Drive



- LaCie Minimus (2 TB hard drive)

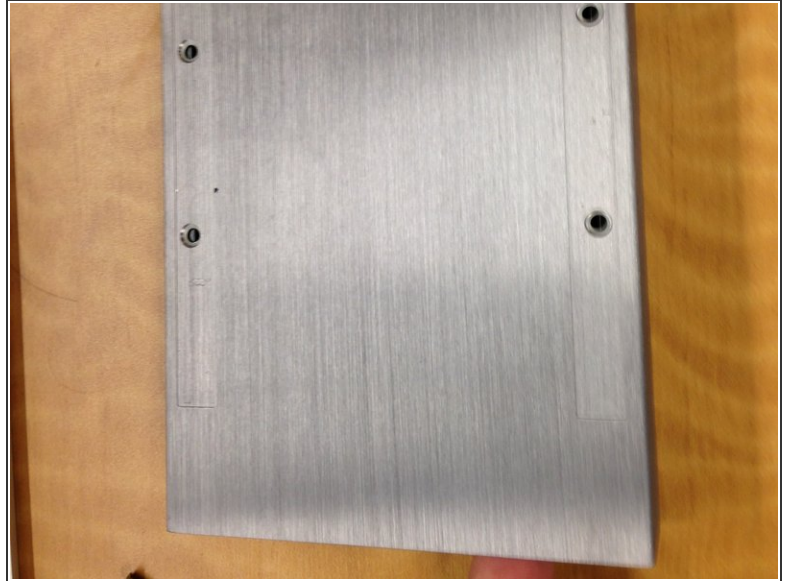
## Step 2



- Turn the drive over, noting the black rubber strips. Carefully peel each strip off, to reveal a set of two phillips screws under each strip.



## Step 3



- Remove the two sets of phillips screws and set them aside.

## Step 4



- Carefully push on the front, black faceplate to slide the drive and housing out of the case.

## Step 5



- Note the label: Warranty Void If Seal Broken. In this case, we want to retrieve the data and do not care about the warranty. Remove the label, to expose one of the four total screws on the side to remove the internal drive.

## Step 6



- Carefully remove the four screws holding the drive in the caddy, making sure that the hard drive does not slip out or damage the SATA controller card towards the rear of the case.



## Step 7



- The drive is now removed. Use an external hard drive reader, etc., such as the Cavalry in the second picture, to hopefully access your drive.

To reassemble your device, follow these instructions in reverse order.