



# Large Animal Water Nipple Replacement

This guide will provide a quick, easy way to replace a water nipple in a bucket or large barrel for large animals to have access to water.

Written By: Katelyn Root-Nelson



---

## INTRODUCTION

This is a replacement of a large animal water nipple, this will provide them access to water without them making a huge mess. This guide has ten easy to follow steps to ensure the replacement is done properly.



### TOOLS:

- [Adjustable Wrench](#) (1)
-



## Step 1 — Large Animal Water Nipple



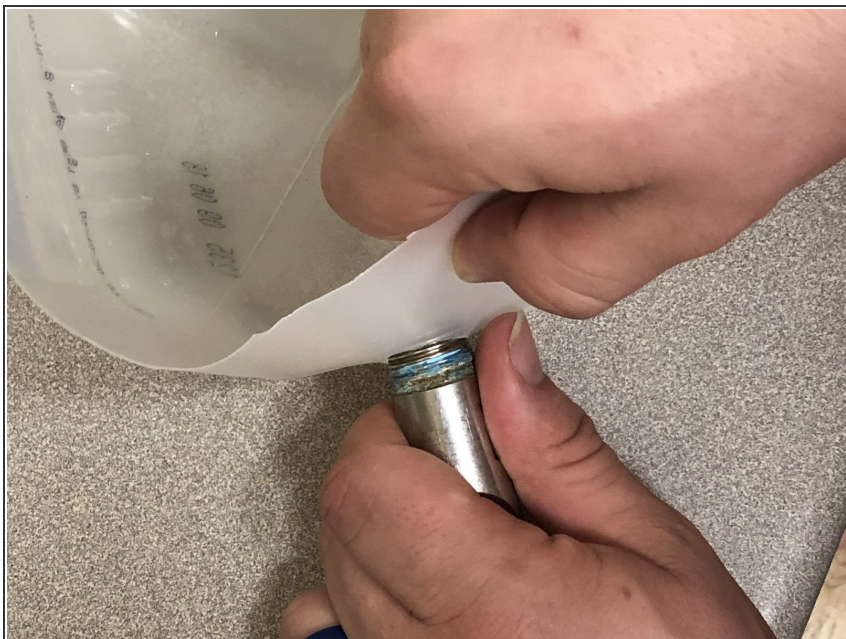
- Empty the container of all water.

## Step 2



- With an adjustable wrench, unscrew the nut on the inside located near the base on the backside of the nipple.

### Step 3



- Pull the mechanism out from the front.

### Step 4



- Ensure there is no damage to the hole that needs to be patched.
- ⓘ Cracks or fractures are easily made due to sun damage or forcing the mechanism in or out.



## Step 5



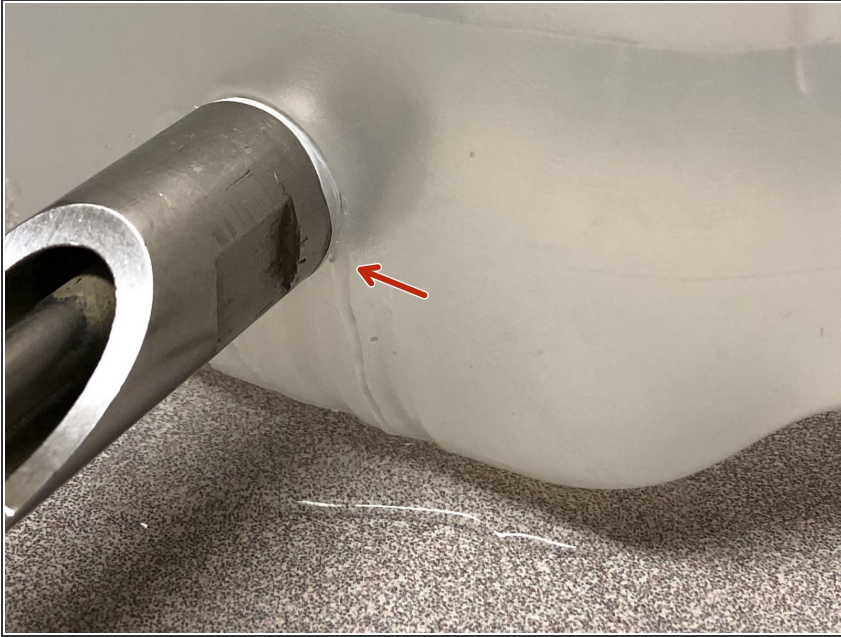
- Use Teflon tape to line the threads of the new nipple.

## Step 6



- Place the new nipple in the hole with the peg on top.

## Step 7



- Fill the container slightly to ensure that there are no leaks. Tighten the washer or pull out to see if a crack has formed while replacing.
- ⓘ Tighten the washer to see if that is the source of the leak. If not, pull out to see if a crack has formed while replacing.
- This is a leak in the seal.

## Step 8



- If there is a leak try placing some more Teflon tape. If this does not fix the issue continue reading this step. If there is no longer a leak, move on.
- ⓘ Leaking from cracks are easily filled with caulking if the container is small. This would only be a temporary fix on a larger container. Due to the weight of the water, the barrel or bucket would need to be replaced.



## Step 9



- Place and thread the nut on the inside of the container on the backside of the nipple.

## Step 10



- Finally, place the container in the designated place and fill completely.