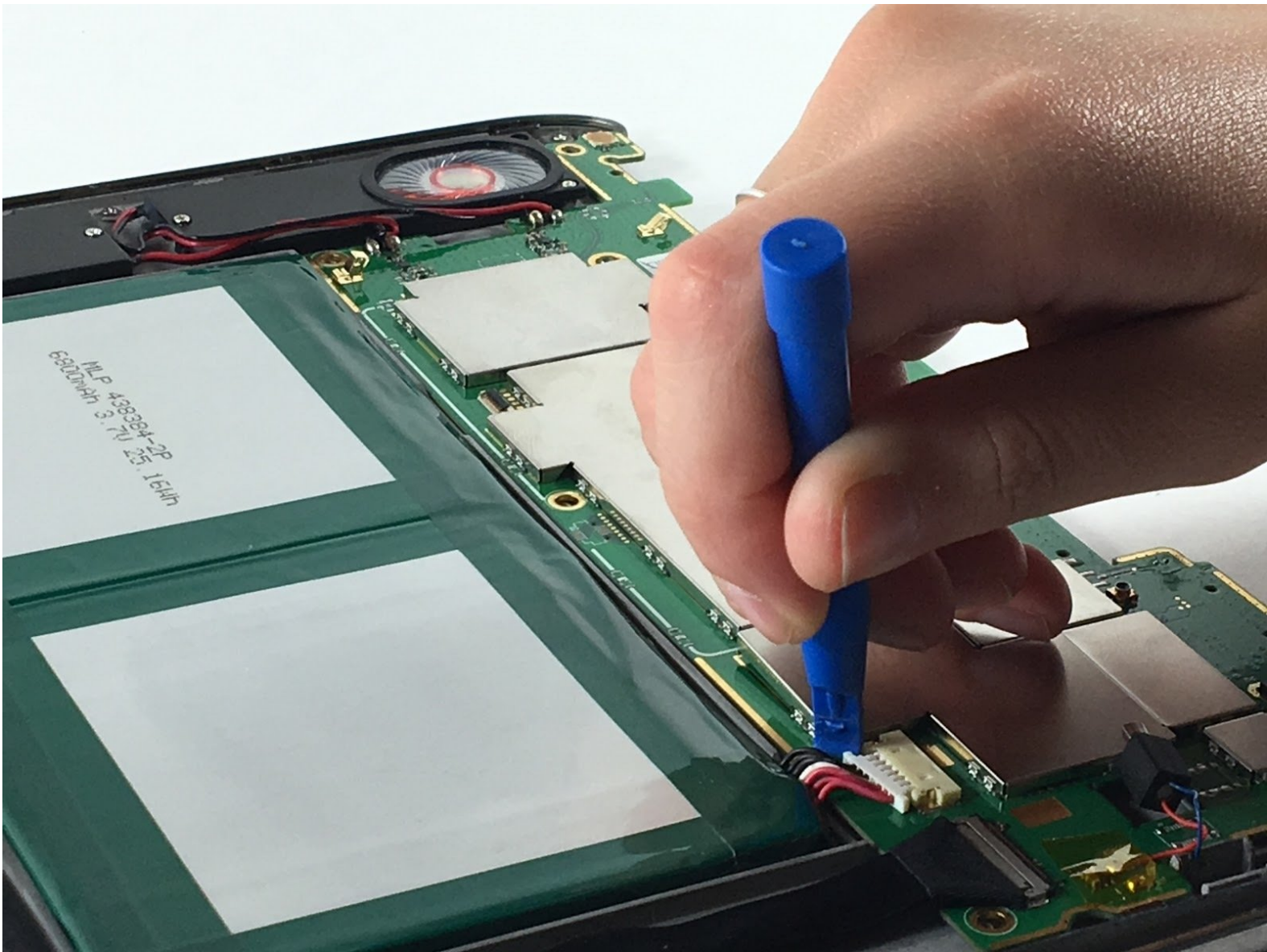




Le Pan II Battery Replacement

Sometimes, when a tablet will not hold a charge or power on, it is due to the battery needing to be replaced.

Written By: Kelly Moniz



INTRODUCTION

In this guide, you will be shown step-by-step how to replace your Le Pan II battery.



TOOLS:

- [Metal Spudger](#) (1)
- [iFixit Opening Tools](#) (1)

Optional

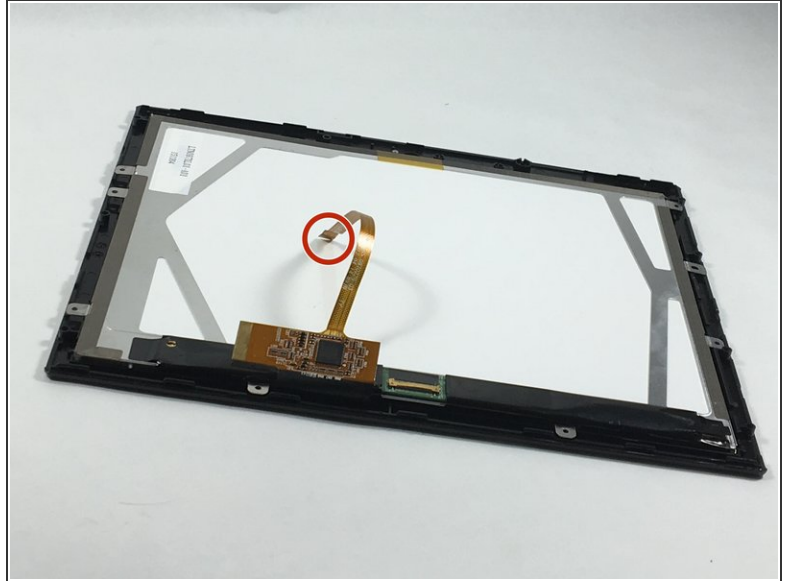
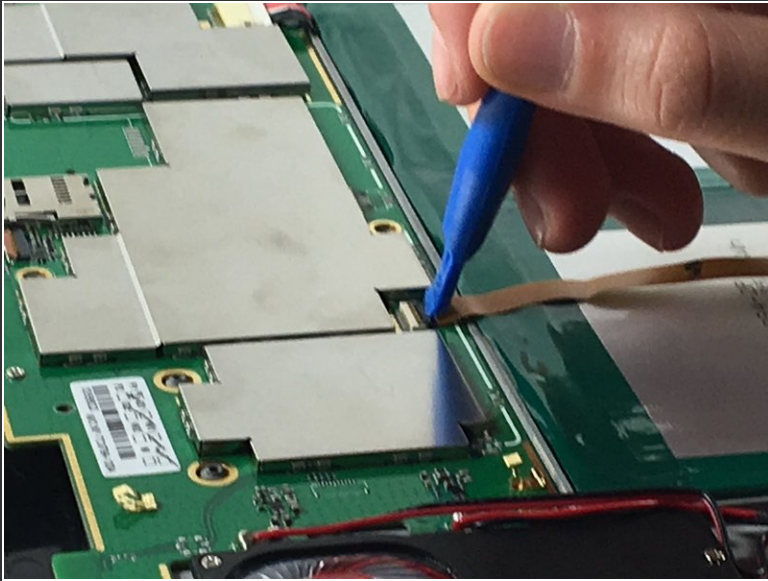
Step 1 — Screen



- Insert metal spudger between front and back panel to pry apart.
- Continue to pry while moving the metal spudger along the crevice to completely separate two panels.

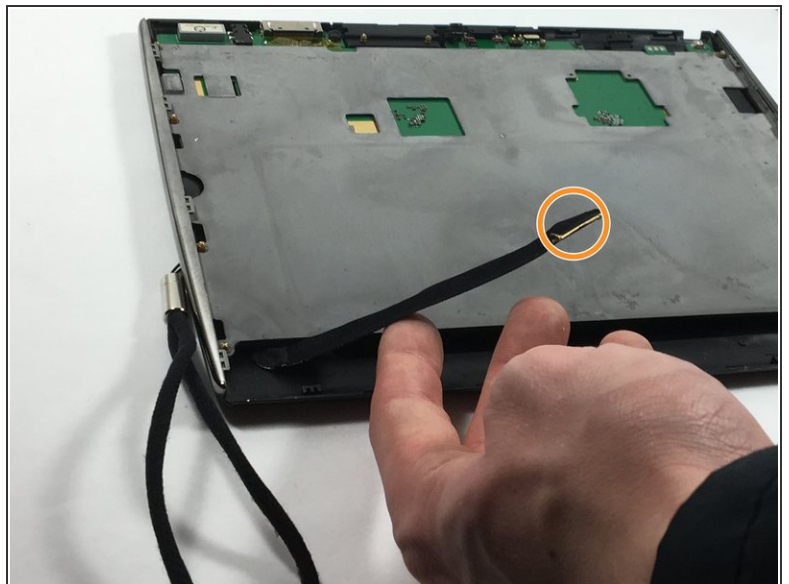
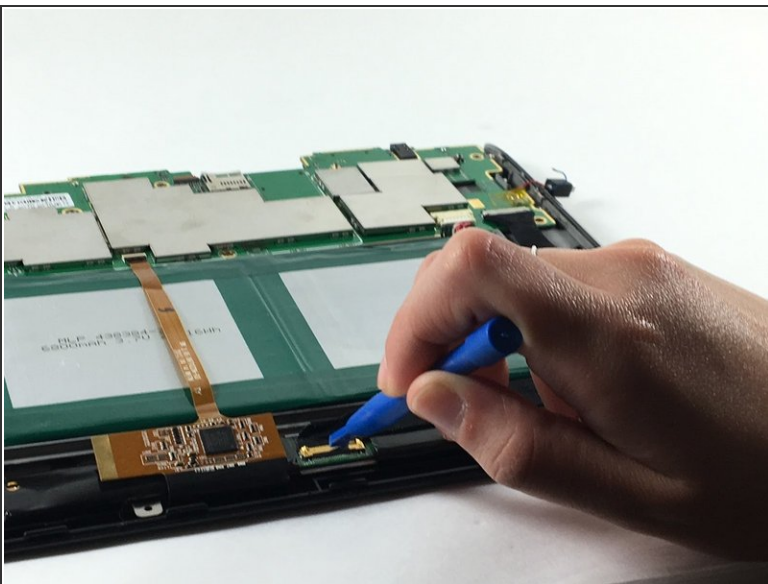
⚠ Avoid using metal when opening devices, as it can damage or crack the screen.

Step 2



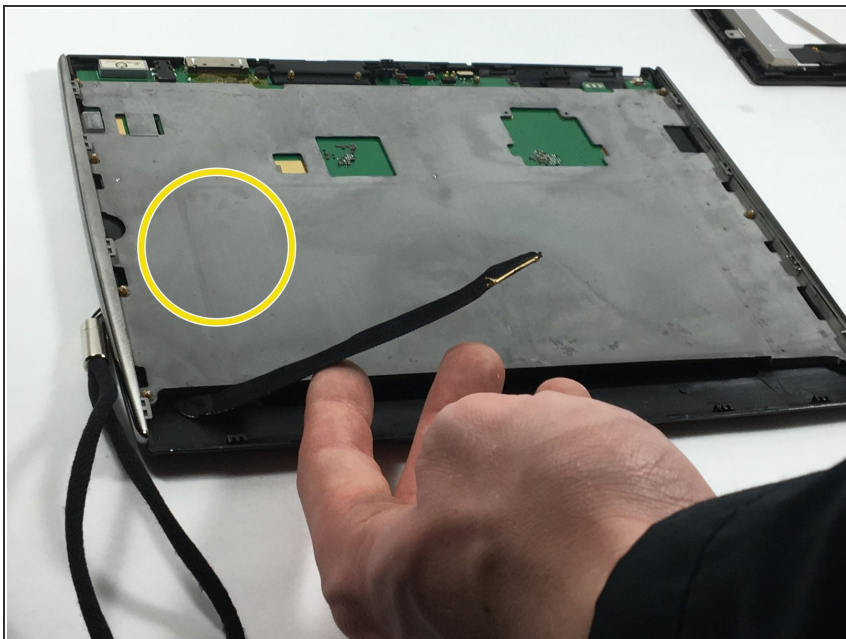
- Use the plastic opening tool to disconnect the flat ribbon cable from the motherboard connector.
- Disconnect the flat ribbon by gently pulling it out from its connecting port.

Step 3



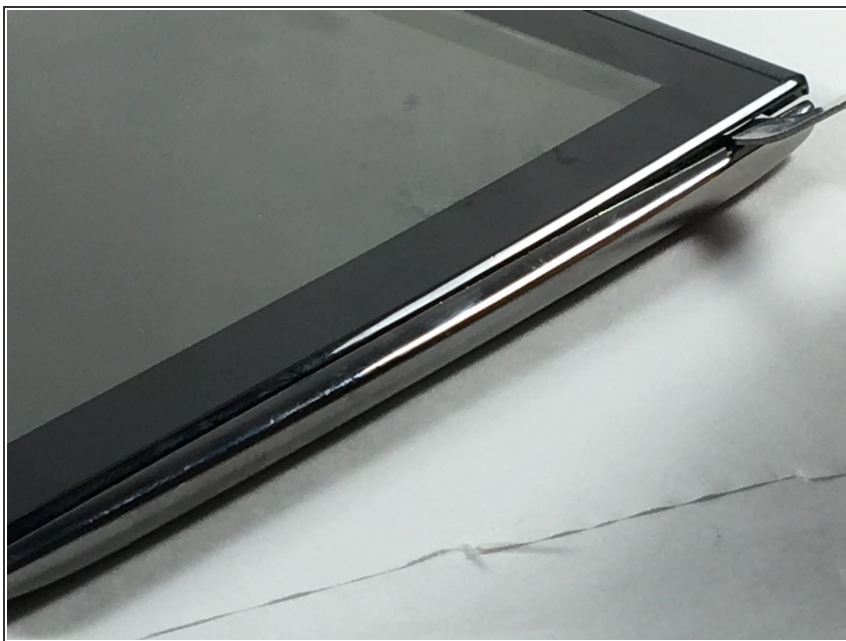
- Use the plastic opening tool to disconnect the display cable from its motherboard connector.
- Disconnect the display cable by gently pulling it out from its connecting port.

Step 4



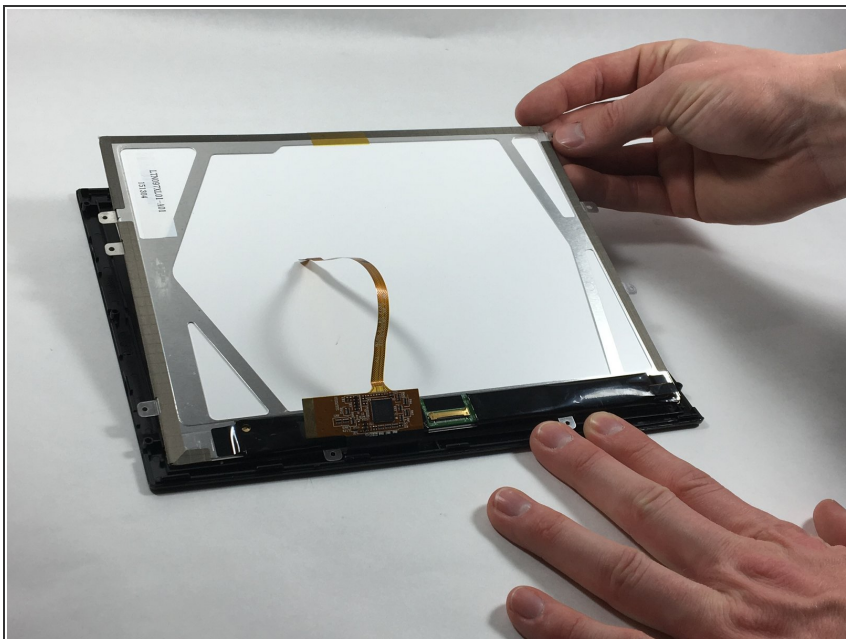
- Remove grey metal backing from screen.

Step 5



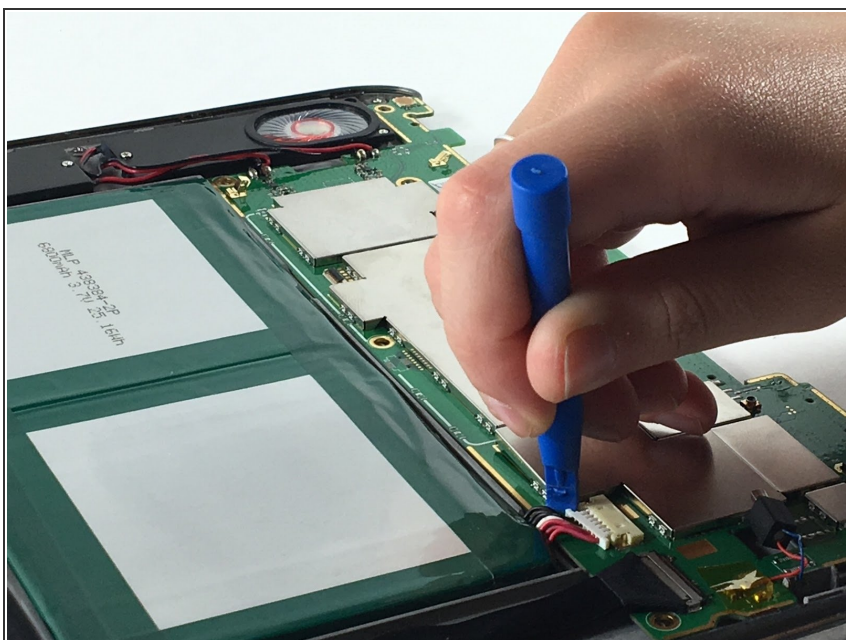
- Flip the tablet so the screen is facing upward, and use the metal spudger to pry apart the screen from the side pieces.

Step 6



- Lift and carefully remove the LCD display from the front cover.

Step 7 — Battery



- Use the plastic opening tool to push out the wires connecting the battery to the motherboard and put battery aside.

To reassemble your device, follow these instructions in reverse order.