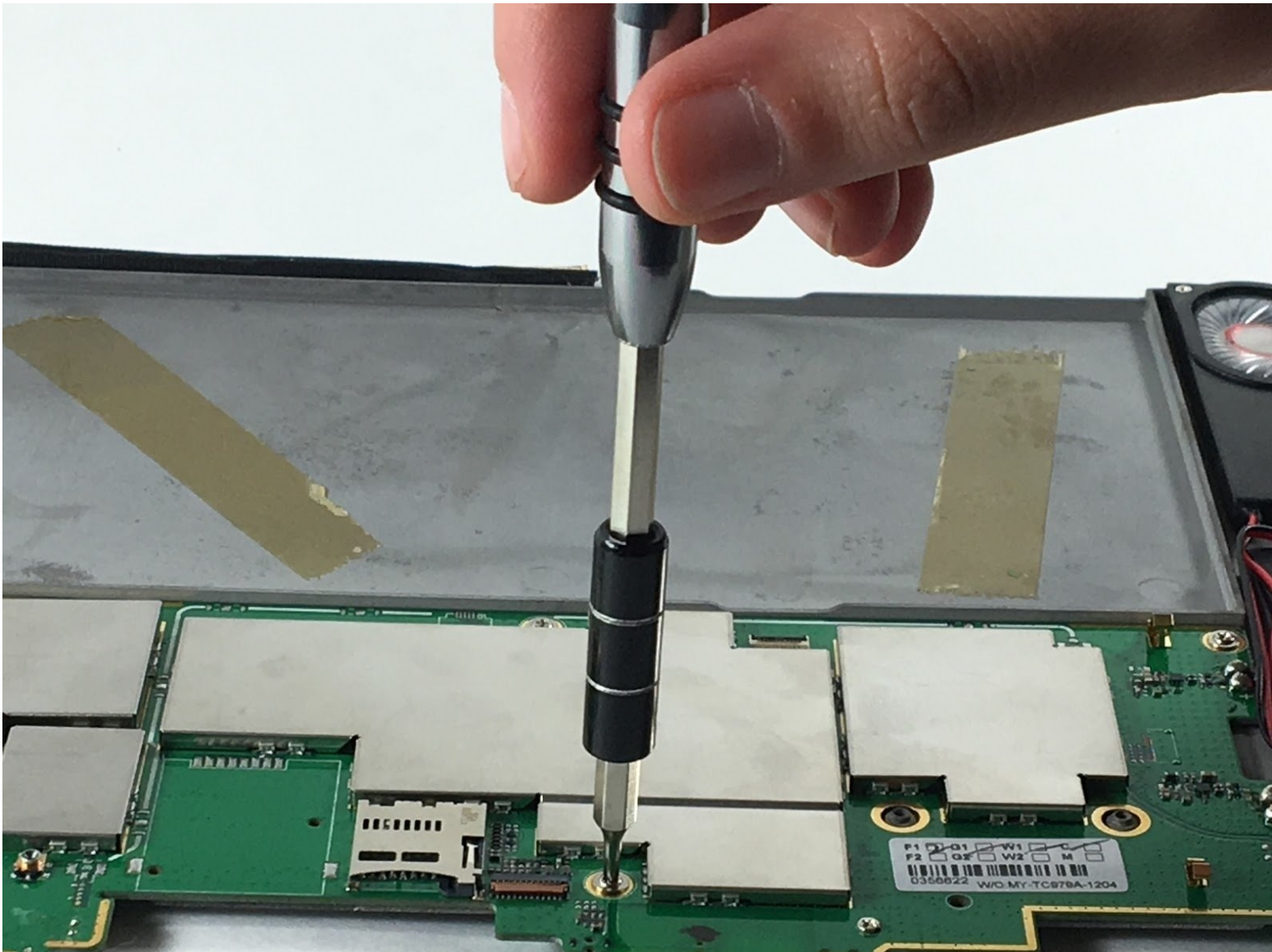




# Le Pan II Charging Port Replacement

Occasionally, the charging port of a tablet can become damaged. If this happens, it's possible that the charger will not insert and connect properly. In this instance, you may need to replace the charging port.

Written By: Kelly Moniz



---

# INTRODUCTION

In this guide, you will be shown step-by-step how to replace your Le Pan II charging port.

---



## TOOLS:

- [Metal Spudger](#) (1)
- [iFixit Opening Tools](#) (1)

*Optional*

- [Phillips #00 Screwdriver](#) (1)
-

## Step 1 — Screen

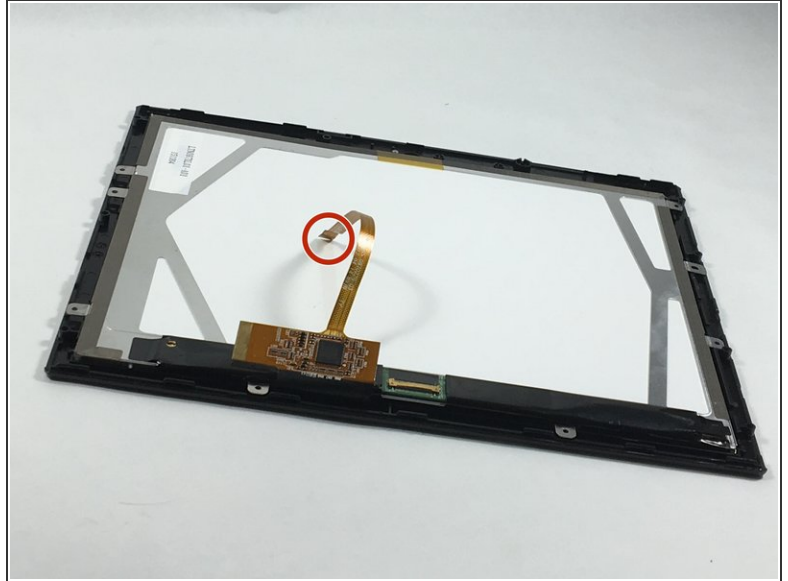
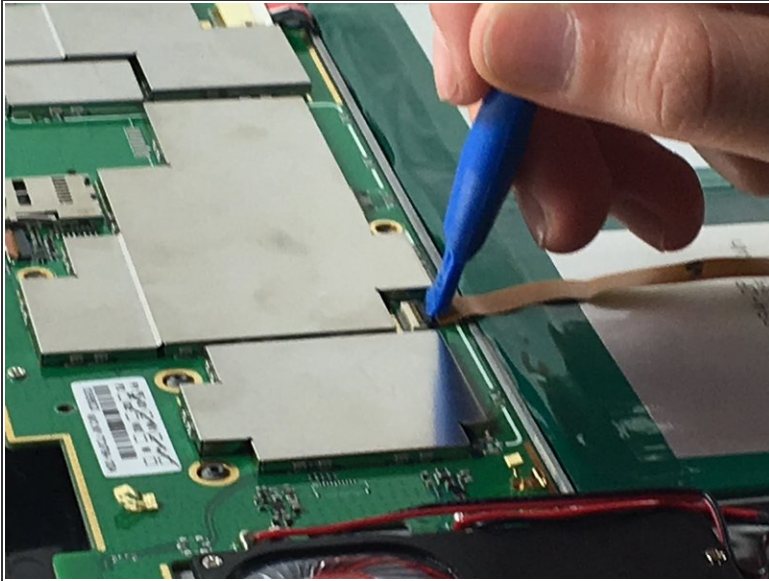


- Insert metal spudger between front and back panel to pry apart.
- Continue to pry while moving the metal spudger along the crevice to completely separate two panels.

 Avoid using metal when opening devices, as it can damage or crack the screen.

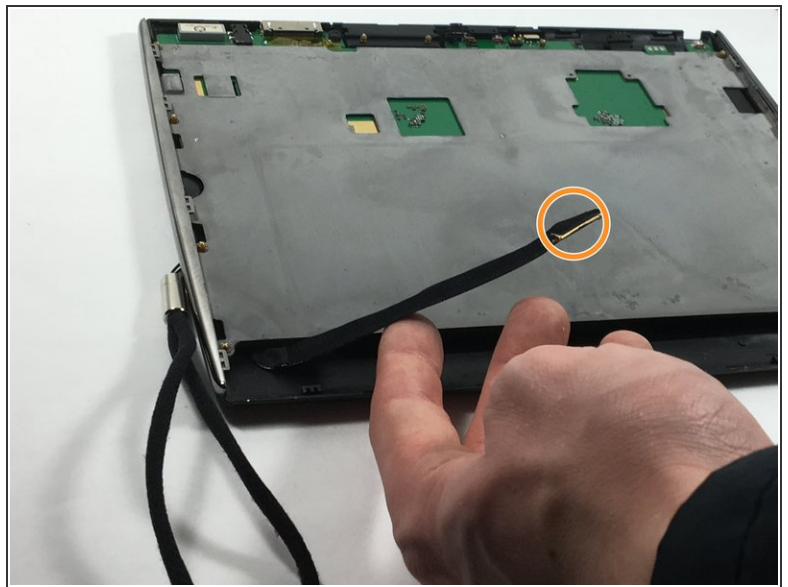
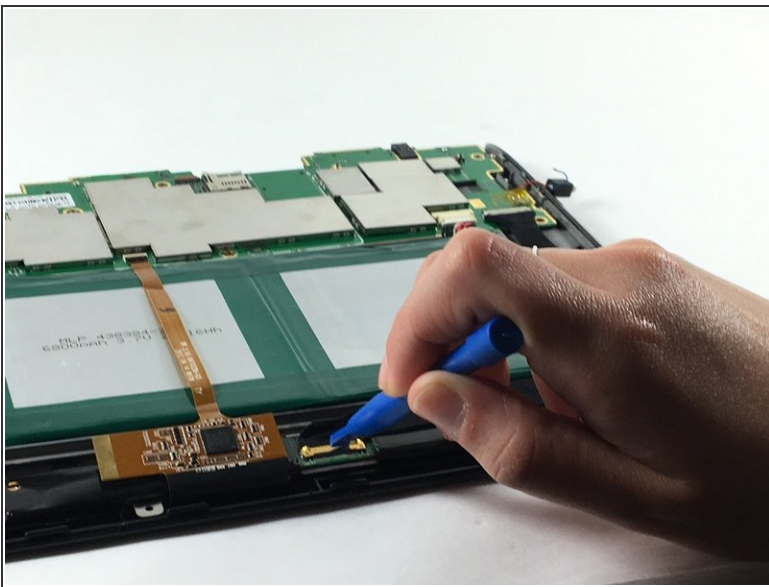


## Step 2



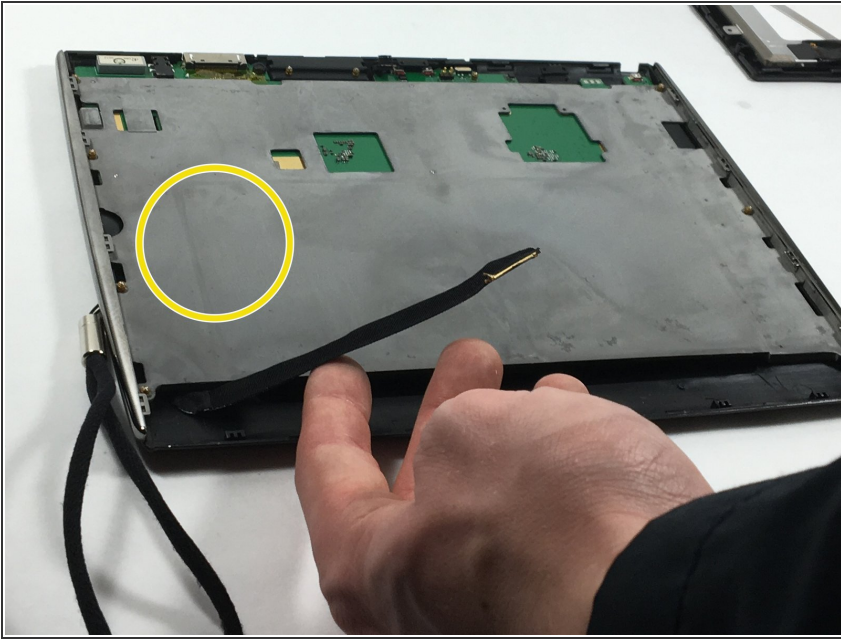
- Use the plastic opening tool to disconnect the flat ribbon cable from the motherboard connector.
- Disconnect the flat ribbon by gently pulling it out from its connecting port.

## Step 3



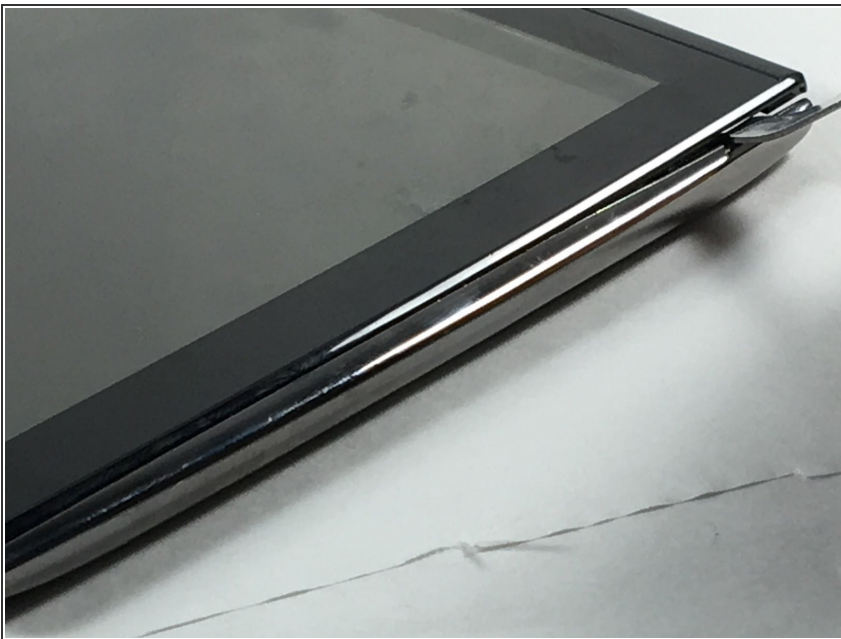
- Use the plastic opening tool to disconnect the display cable from its motherboard connector.
- Disconnect the display cable by gently pulling it out from its connecting port.

## Step 4



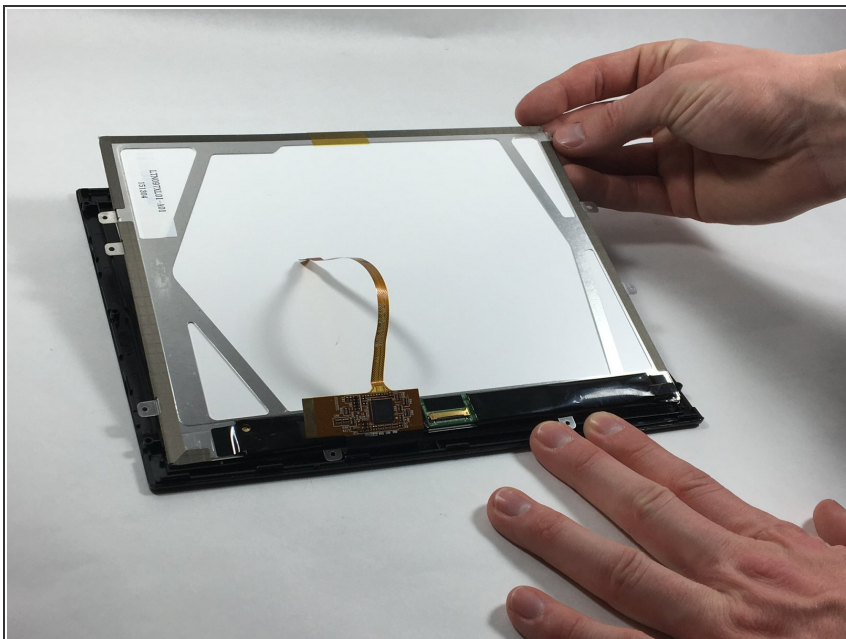
- Remove grey metal backing from screen.

## Step 5



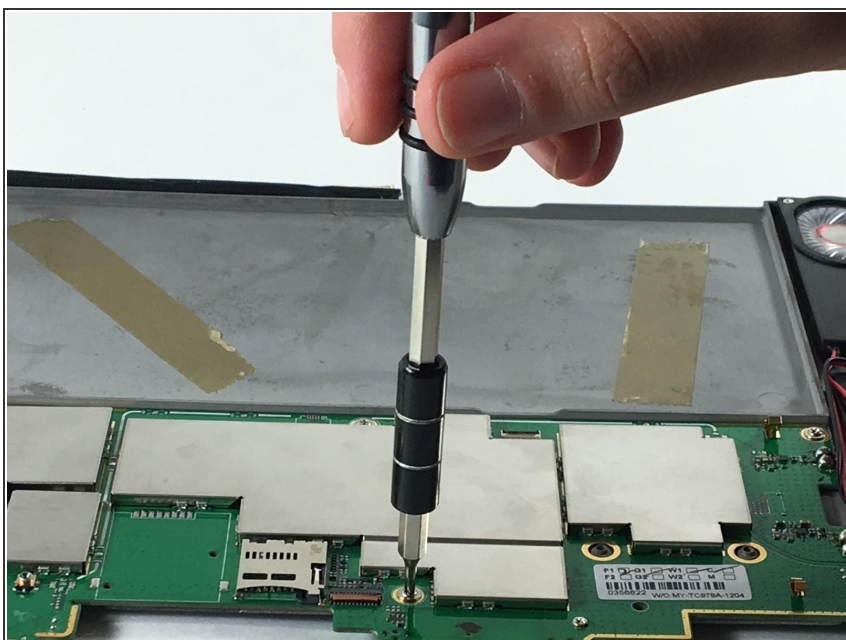
- Flip the tablet so the screen is facing upward, and use the metal spudger to pry apart the screen from the side pieces.

## Step 6



- Lift and carefully remove the LCD display from the front cover.

## Step 7 — Charging Port



- Use the Phillips 00 screwdriver head to unscrew the screws to the motherboard.
- ★ Reminder: There should be 8 (3.5 mm) screws to the motherboard.

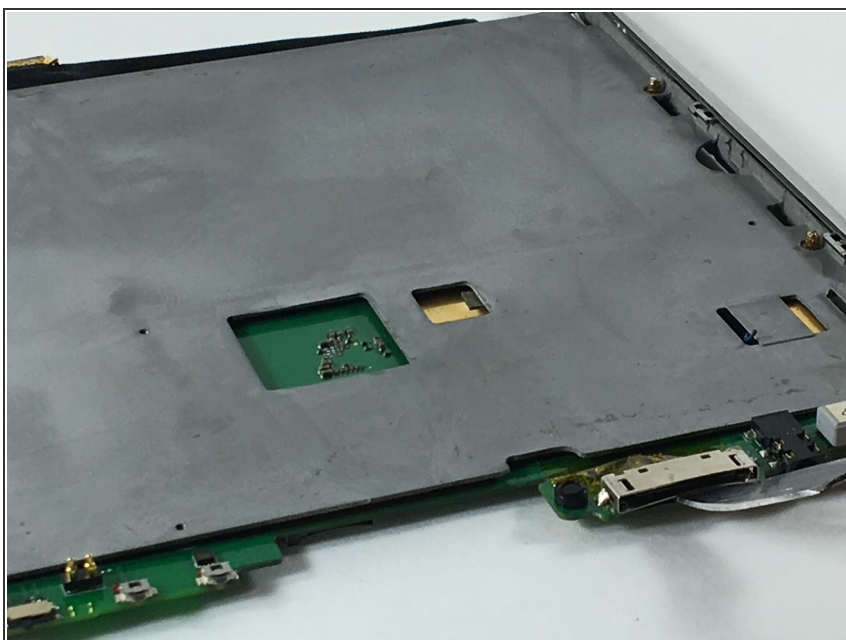


## Step 8



- Use the Phillips 00 screwdriver head to unscrew the screws to the fan.
- ★ Reminder: There should be 4 (1mm) screws to the fan.

## Step 9



- Use the metal spudger to pry off the charging port from the motherboard.

To reassemble your device, follow these instructions in reverse order.