



Le Pan II Screen Replacement

Cracked screens are one of the most common and frustrating issues when it comes to owning a tablet. Learn to replace a cracked or broken screen on your Le Pan II tablet.

Written By: Kelly Moniz



INTRODUCTION

In this guide, you will be shown step-by-step how to replace your broken Le Pan II screen. This screen is attached to a plastic casing with adhesives and this should be kept in mind during the following steps.

TOOLS:

- [Metal Spudger](#) (1)
- [iFixit Opening Tools](#) (1)

Optional

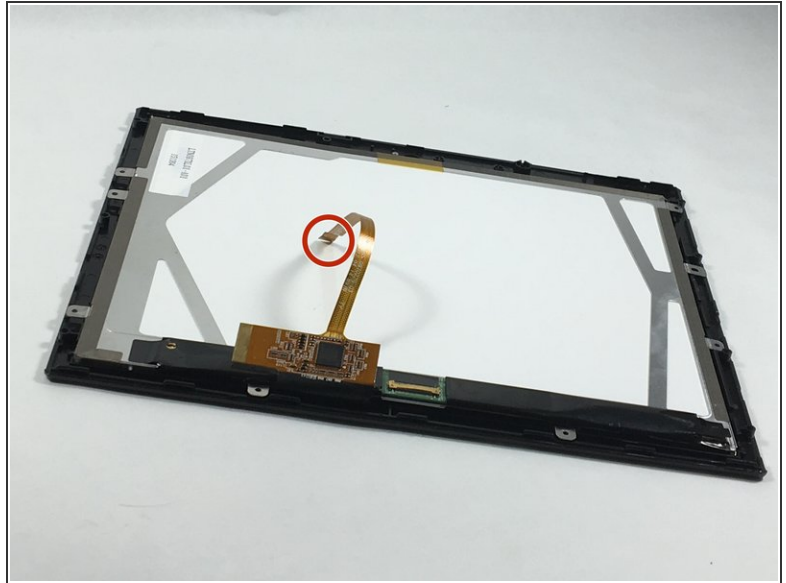
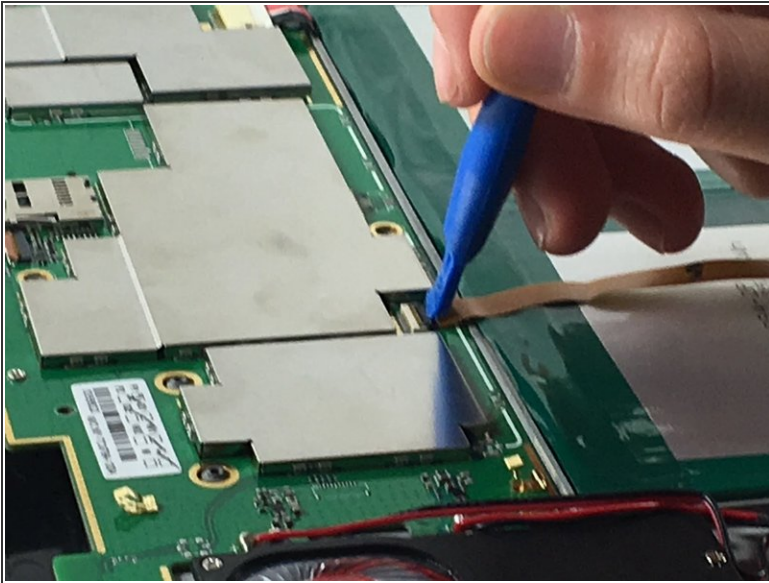
Step 1 — Screen



- Insert metal spudger between front and back panel to pry apart.
- Continue to pry while moving the metal spudger along the crevice to completely separate two panels.

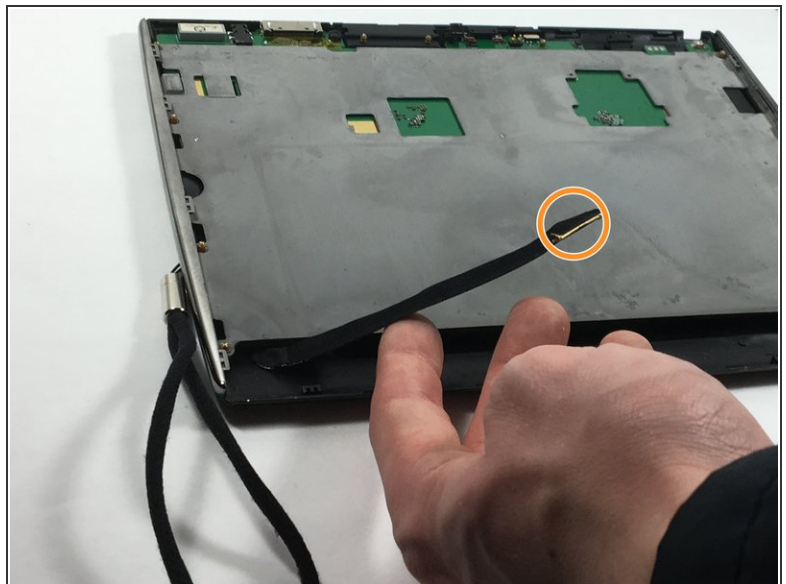
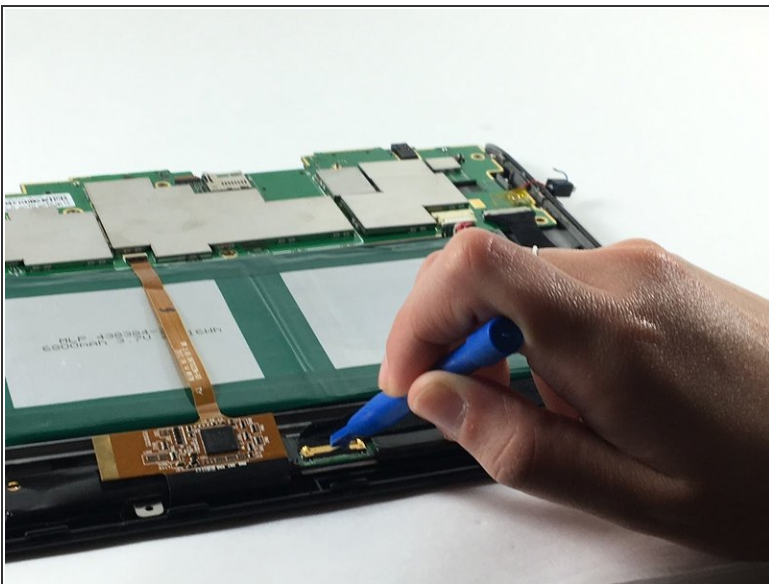
 Avoid using metal when opening devices, as it can damage or crack the screen.

Step 2



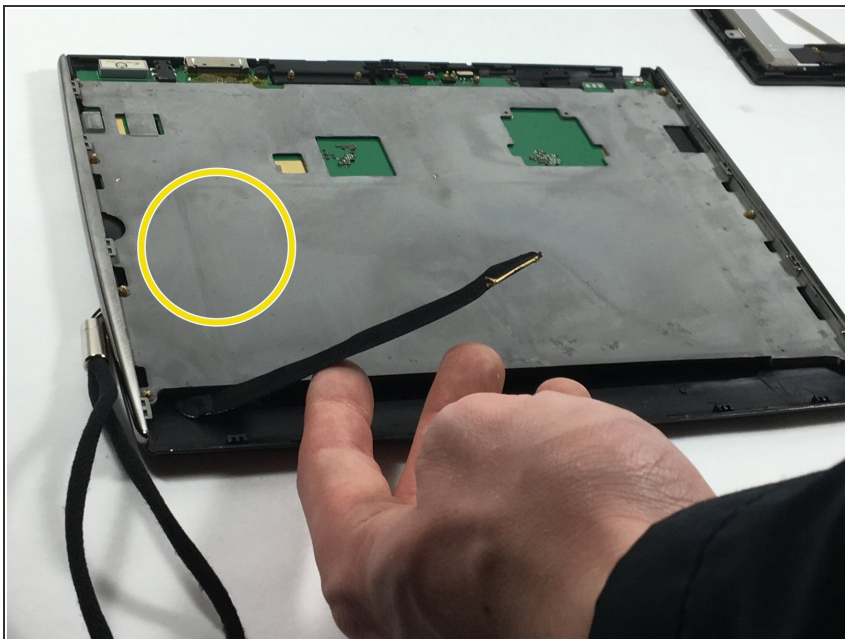
- Use the plastic opening tool to disconnect the flat ribbon cable from the motherboard connector.
- Disconnect the flat ribbon by gently pulling it out from its connecting port.

Step 3



- Use the plastic opening tool to disconnect the display cable from its motherboard connector.
- Disconnect the display cable by gently pulling it out from its connecting port.

Step 4



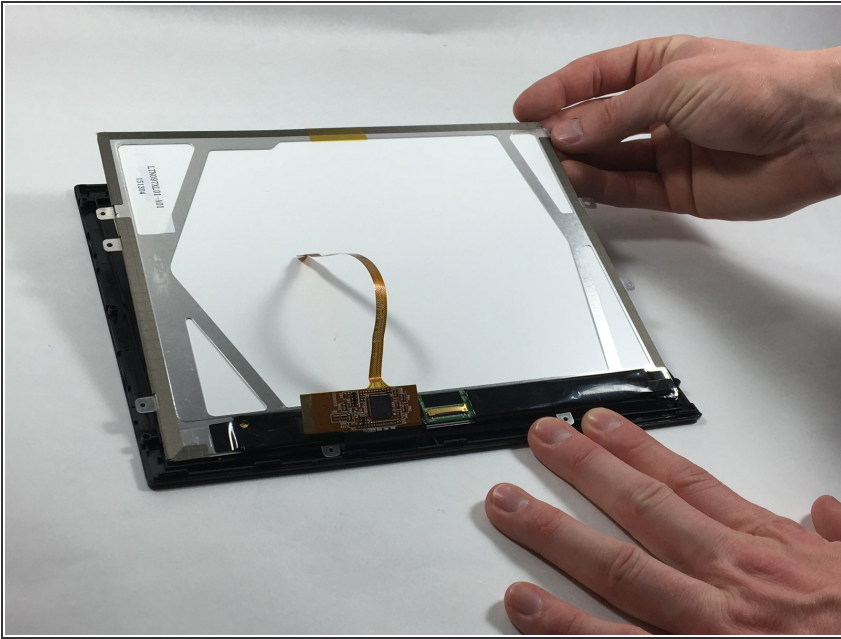
- Remove grey metal backing from screen.

Step 5



- Flip the tablet so the screen is facing upward, and use the metal spudger to pry apart the screen from the side pieces.

Step 6



- Lift and carefully remove the LCD display from the front cover.

To reassemble your device, follow these instructions in reverse order.