



Le Pavé Parisien V1: Replacing the loudspeaker

Follow this tutorial in order to easily replace the loudspeaker in your Pave Parisien.

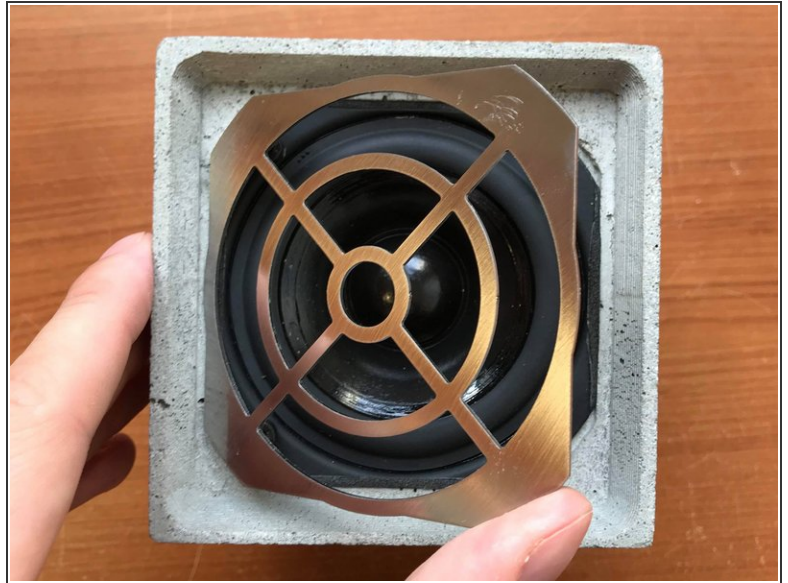
Written By: Le Pavé Parisien



INTRODUCTION

Follow this tutorial in order to easily replace the loudspeaker in your Pave Parisien.

Step 1 — Remove the grill



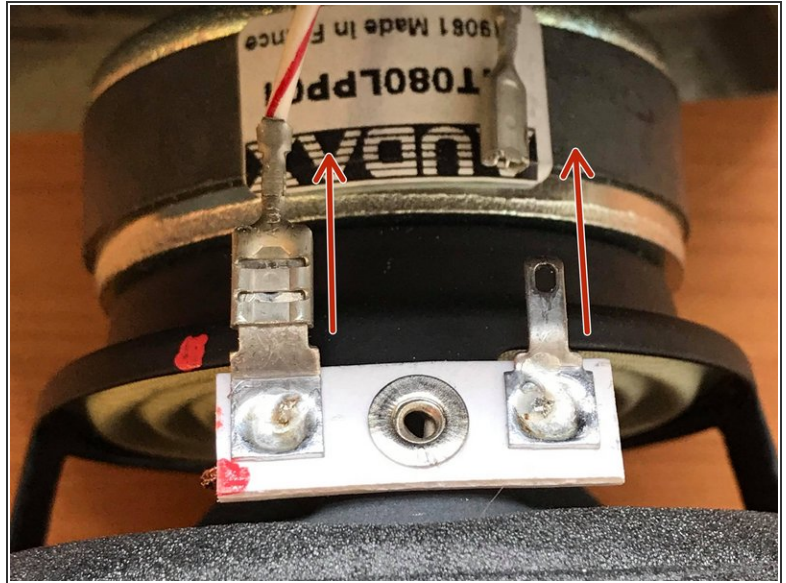
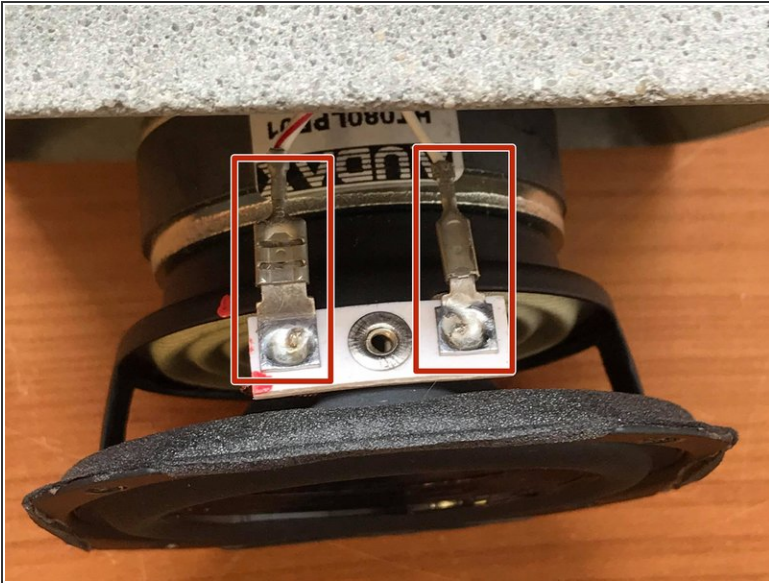
- Remove the speaker protective grill by first lifting one corner.

Step 2 — Unscrew the loudspeaker



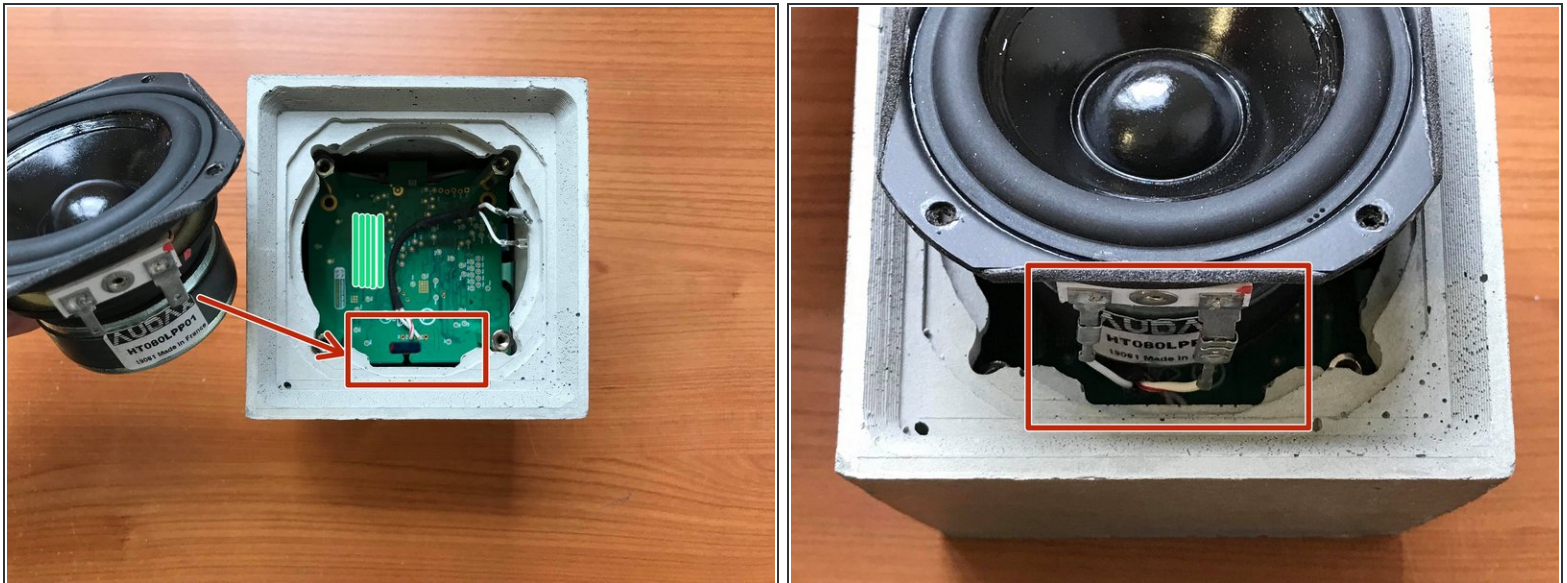
- Remove the 4 speaker retaining screws using an M4 allen wrench.

Step 3 — Disconnecting the loudspeaker



- Lift the speaker out of the concrete shell in order to access the connections.
- To disconnect the speaker, pull each of the cables, gripping the connector and easing it from side to side.
- You only have to connect the replacement speaker and follow the instructions in reverse in order to reassemble your Pavé Parisien.

Step 4 — Replacing the speaker in the shell



- Connect the speaker as in step 3. Take care to ensure the connectors are on the side where there is a notch in the concrete.

Step 5 — Finish



- You only have to replace the screws and the protective grill and your Pavé Parisien is reassembled!

Follow these instruction in reverse order to reassemble your device.

This document was generated on 2020-01-21 03:55:06 PM (MST).

