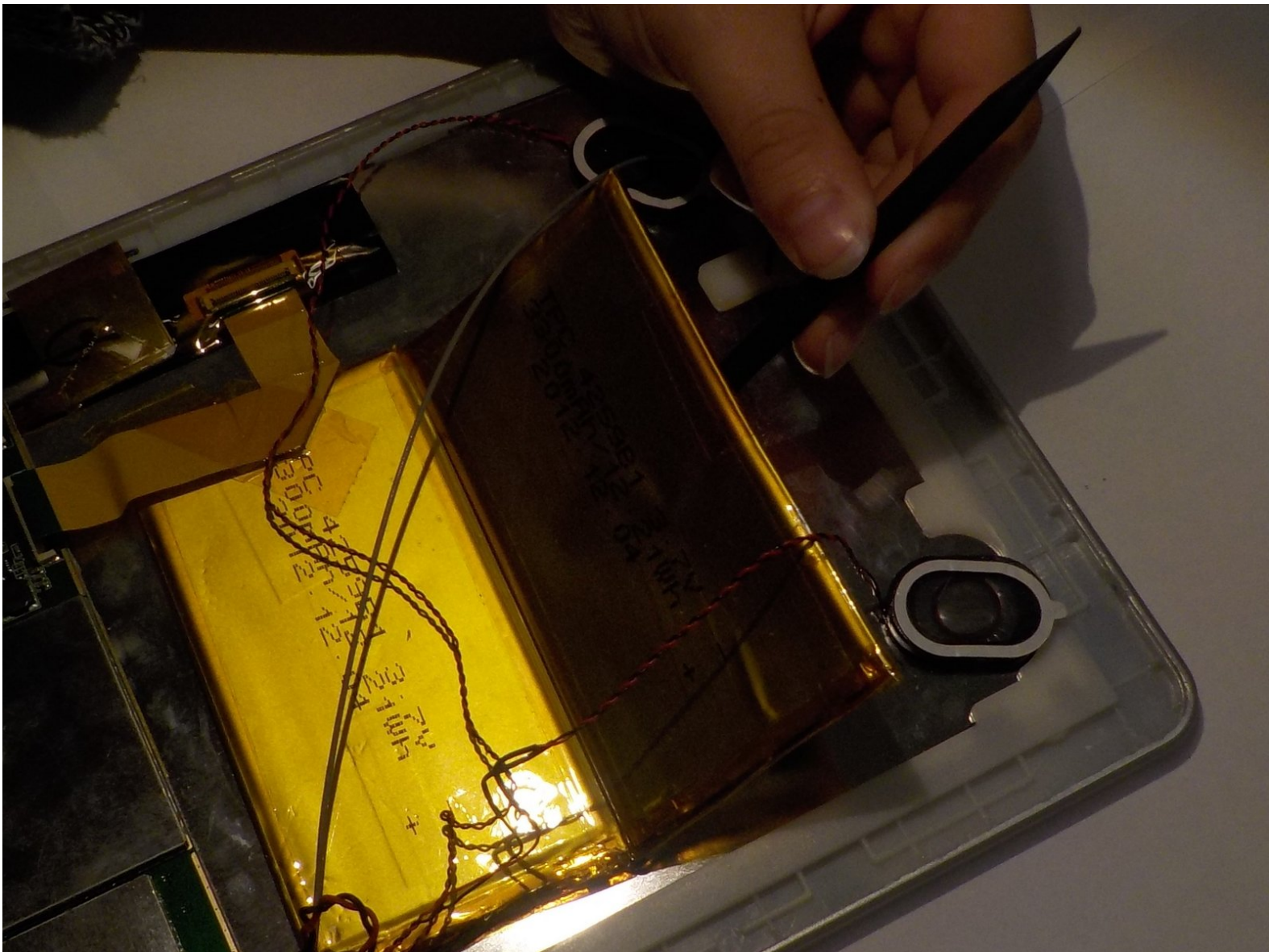




# Leader Impression i10A-LE Battery Pack Replacement

This guide will show a step by step process to replace a worn out battery pack on your Leader Impression i10A-LE tablet. This replacement will take approximately 15-20 minutes to complete.

Written By: riley seyffert



This document was generated on 2019-09-21 06:26:02 AM (MST).



## TOOLS:

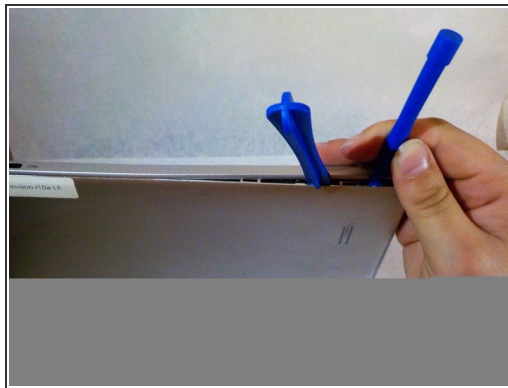
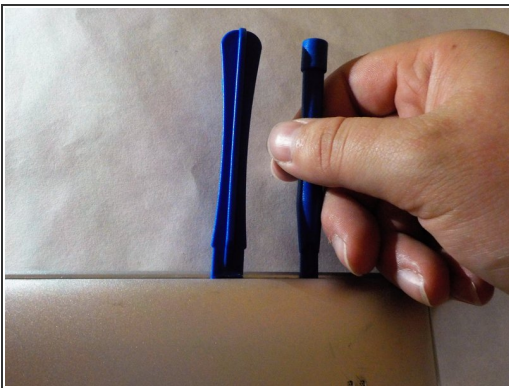
- [iFixit Opening Tools](#) (1)
  - [Soldering Iron](#) (1)
  - [Spudger](#) (1)
-

## Step 1 — Battery Pack



- Start with your Leader Impression i10A-LE with the word "Impression" closest to you and the camera in the top left corner.

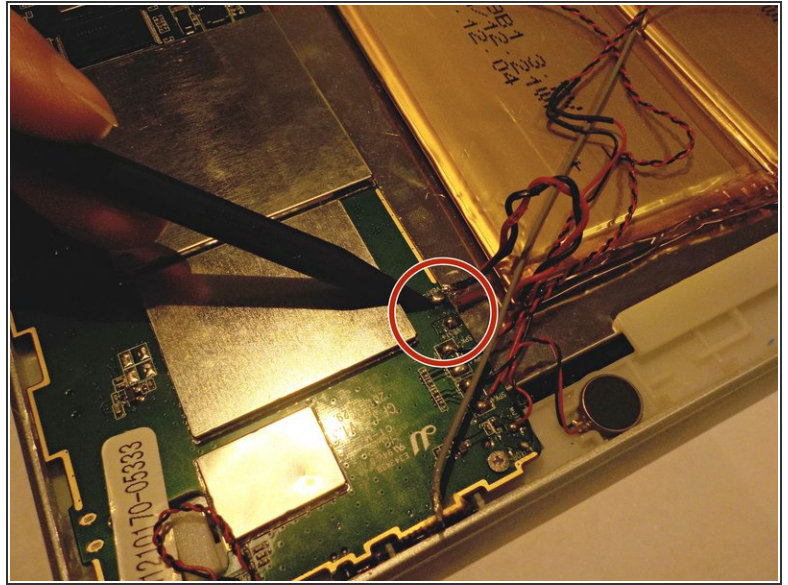
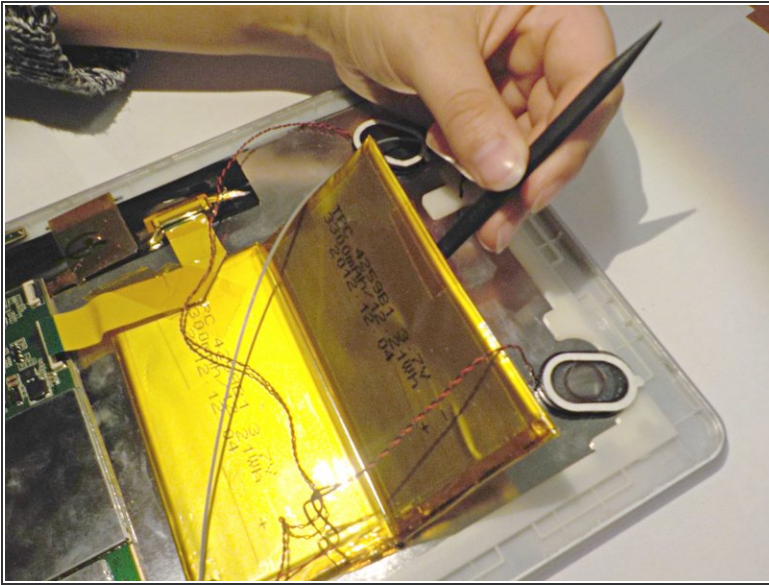
## Step 2



- Use the plastic prying tools to crack open the back of the device.
- Once cracked, use more plastic prying tools to fully remove the back panel. A popping noise will occur when each clip is opened.
- Remove the back panel and set aside.



### Step 3



- The battery pack is glued to the device.
- Use a spudger to pry the battery pack from the glue.
- Desolder the positive (red) and negative (black) power leads.

To reassemble your device, follow these instructions in reverse order.