



Leap Motion Controller Teardown

Written By: Ethan



INTRODUCTION

This is a teardown of the Leap Motion Controller.

[video: <http://www.youtube.com/watch?v=Hl8js0dBttI>]



TOOLS:

- [Phillips #00 Screwdriver](#) (1)
-

Step 1 — Leap Motion Controller Teardown



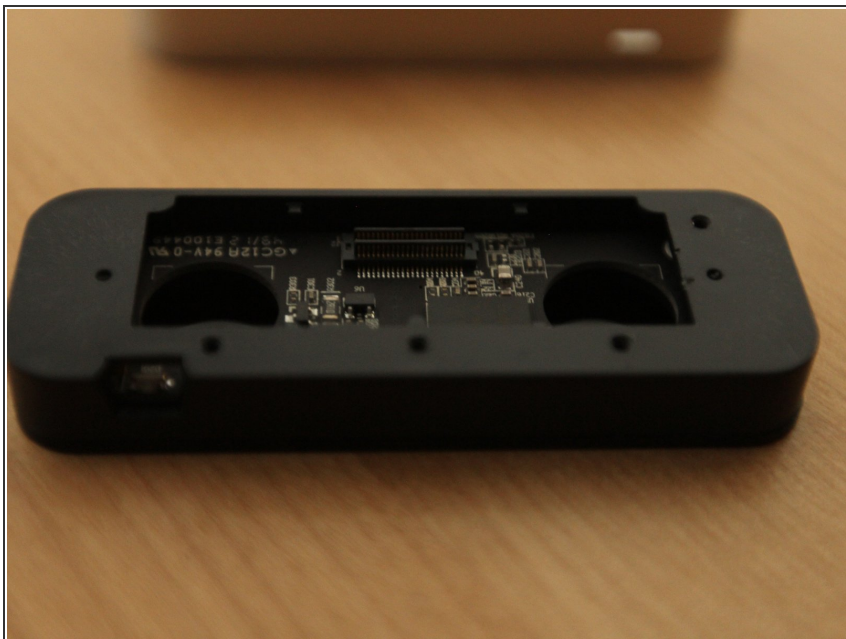
- First, unplug the Leap Motion device.

Step 2



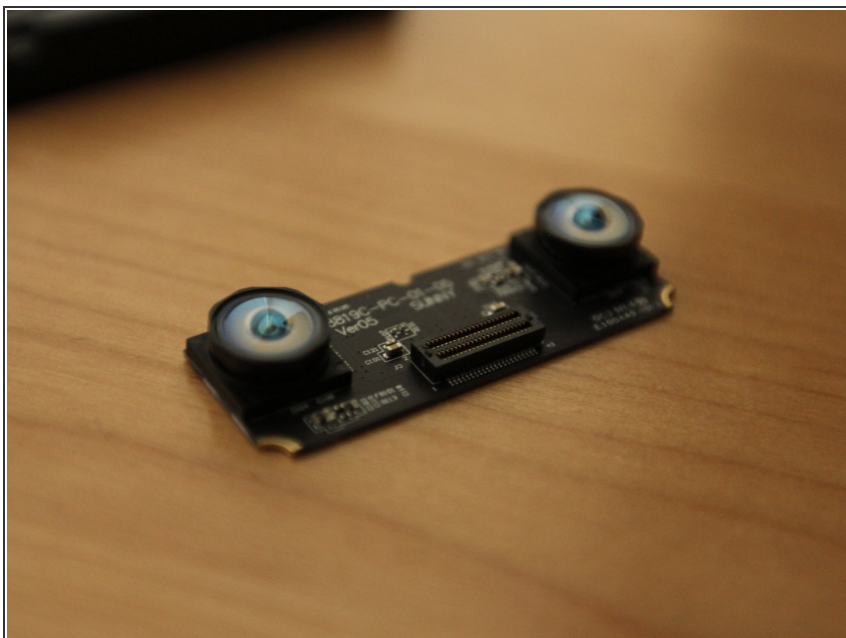
- Peel off the rubber backing and unscrew the housing from the internal components.

Step 3



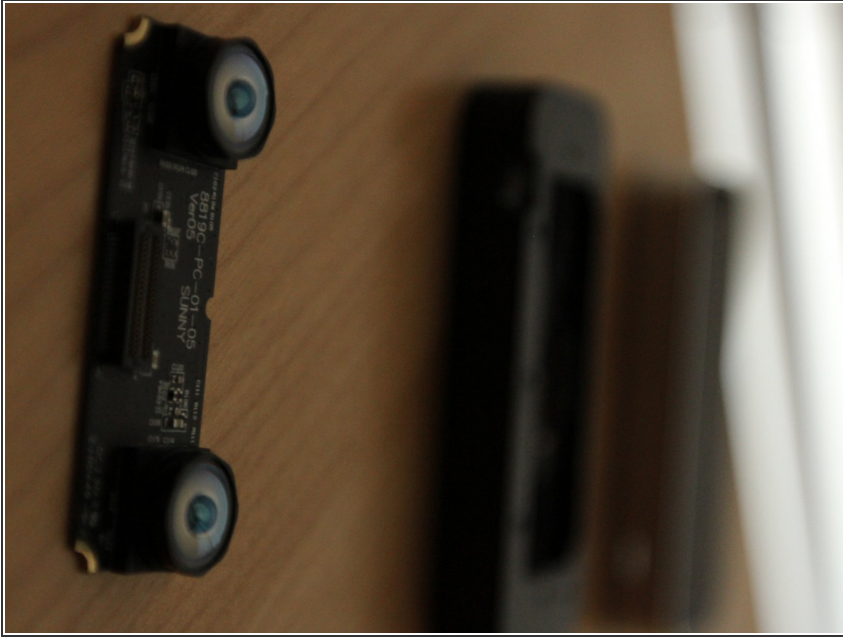
- Peel back the tape on the internal components and lift the lenses out.

Step 4



- Handle the lens array in a clean environment

Step 5



- Put it back together!

Step 6



- Enjoy!

To reassemble your device, follow these instructions in reverse order.