



LeapFrog LeapPad 2 Rear Cover Replacement

This guide will show you how to remove the rear housing to access internal components.

Written By: Chase Mamatey



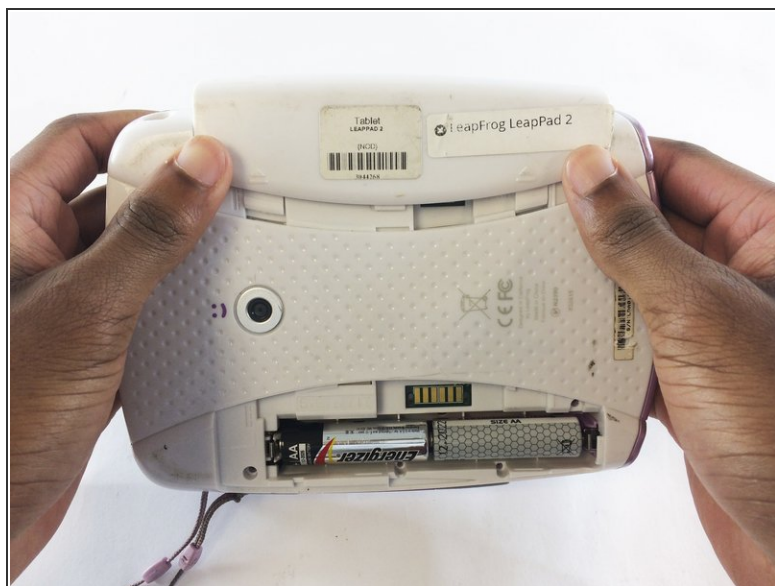
INTRODUCTION

In order to access and replace internal components such as the cameras, motherboard, or screen assembly, you must remove the back cover of the tablet.

TOOLS:

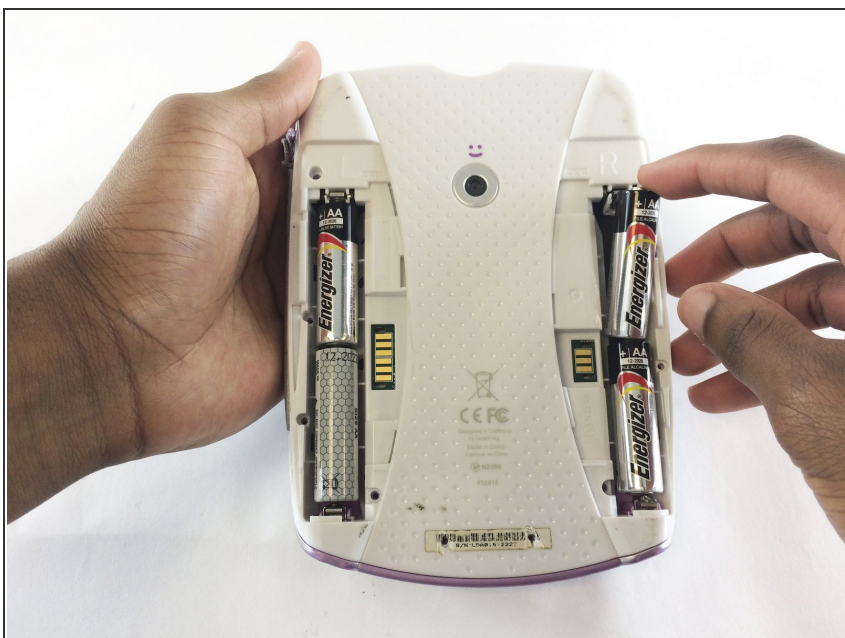
- [iFixit Opening Tools](#) (1)
 - [Phillips #1 Screwdriver](#) (1)
-

Step 1 — Battery



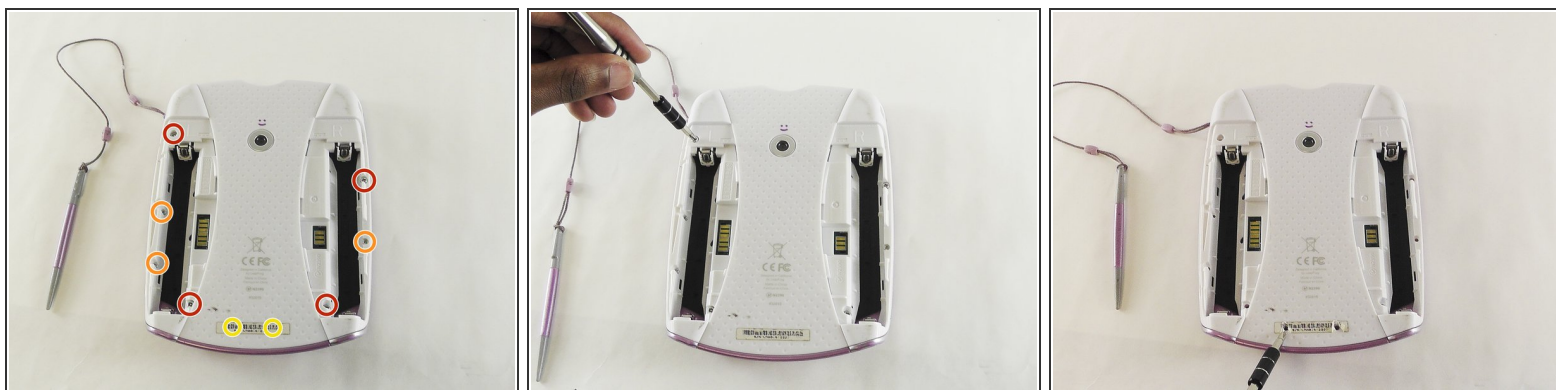
- Turn the tablet so the back is visible.
- One at a time, remove the battery covers by sliding them towards the sides and away from the center of the device.

Step 2



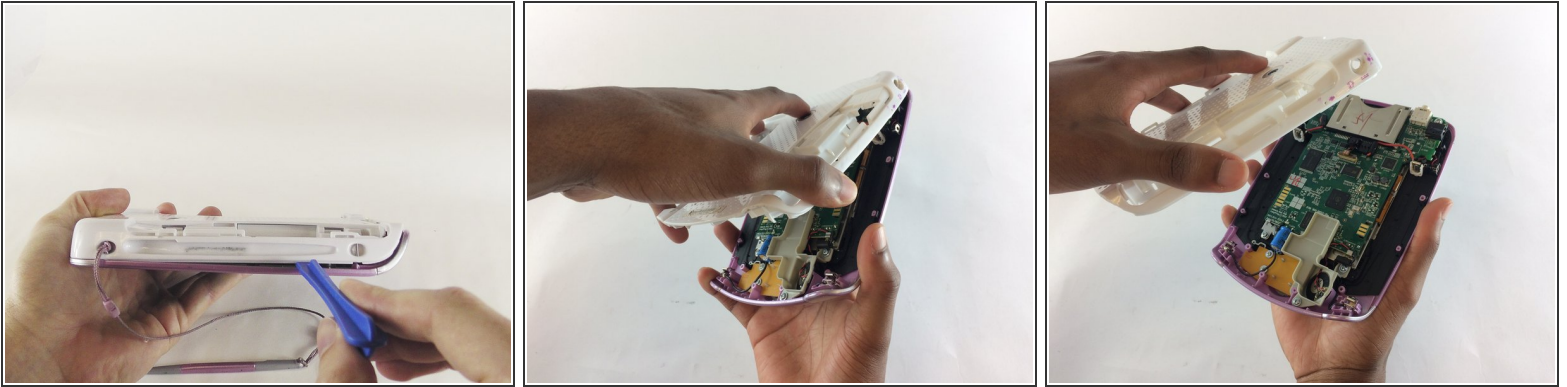
- Remove the AA batteries from both battery compartments of the device.

Step 3 — Rear Cover



- Use a Phillips #1 screwdriver to remove the following screws from the device:
 - Four 7.0mm Phillips screws
 - Three 6.0mm Phillips screws
 - Two 10.0mm Phillips screws
- ⓘ These two screws are behind the barcode decal on the bottom of the device. Expose the screws by puncturing, cutting, or peeling the barcode decal.

Step 4



- Use a small plastic opening tool to begin separating the colored front cover from the white rear cover of the device.
- With one hand on the front cover and one hand on the rear cover, start from the bottom of the device and begin pulling the pieces apart.
- ⓘ The most stubborn tabs holding the front and rear together are along the top edge of the tablet around the game cartridge slot. This will most likely be the last area that separates, and it may require a moderate amount of force.
- Once only the top edge remains connected, simultaneously pull the rear cover backwards away from the front cover and upwards towards the top of the device. This should release the last remaining tabs holding the pieces together.

To reassemble your device, follow these instructions in reverse order.