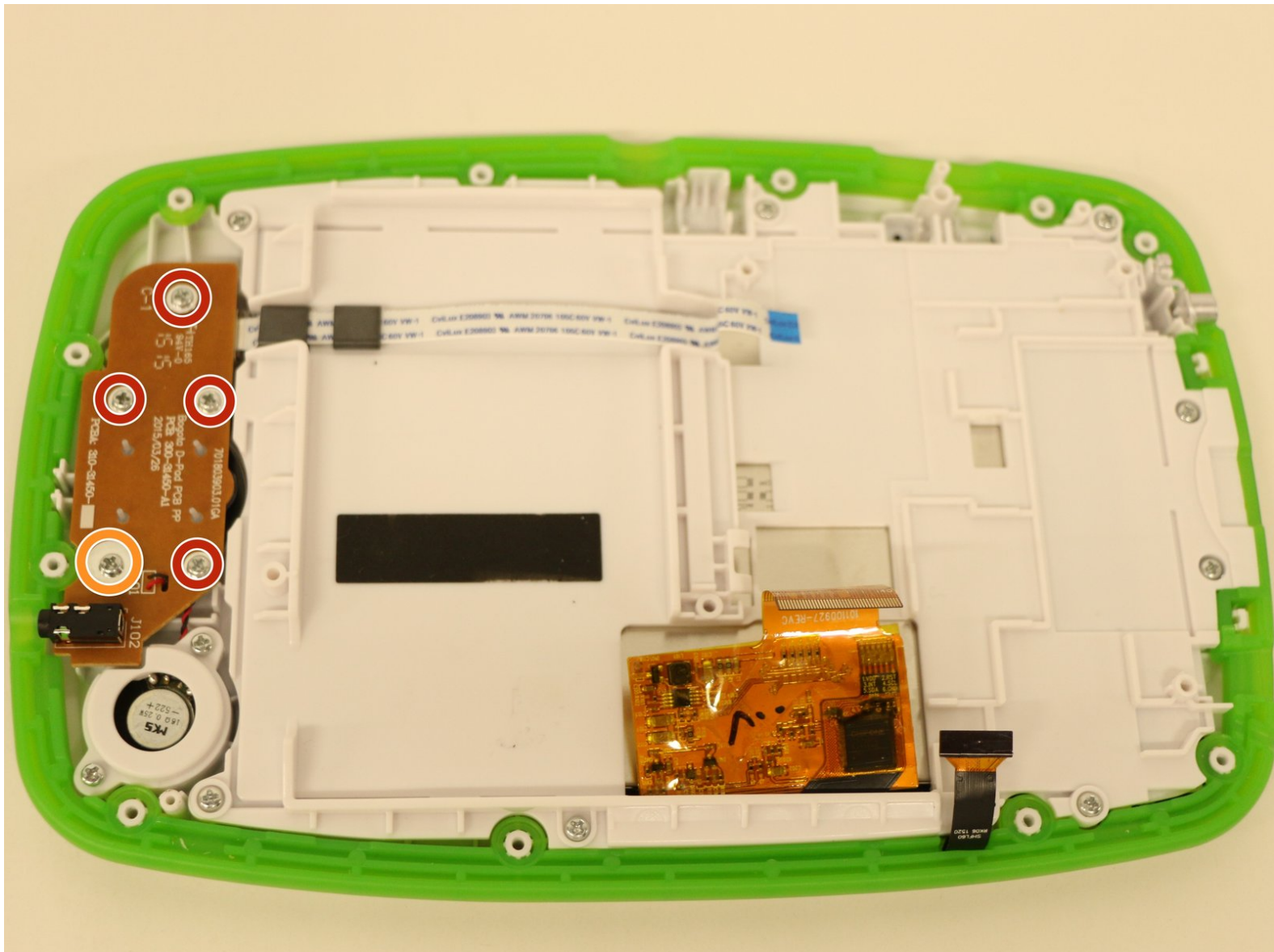




LeapFrog LeapPad Platinum Speaker Replacement

In this guide, you will learn how to remove and replace the LeapPad Platinum's speaker.

Written By: Leann Nguyen



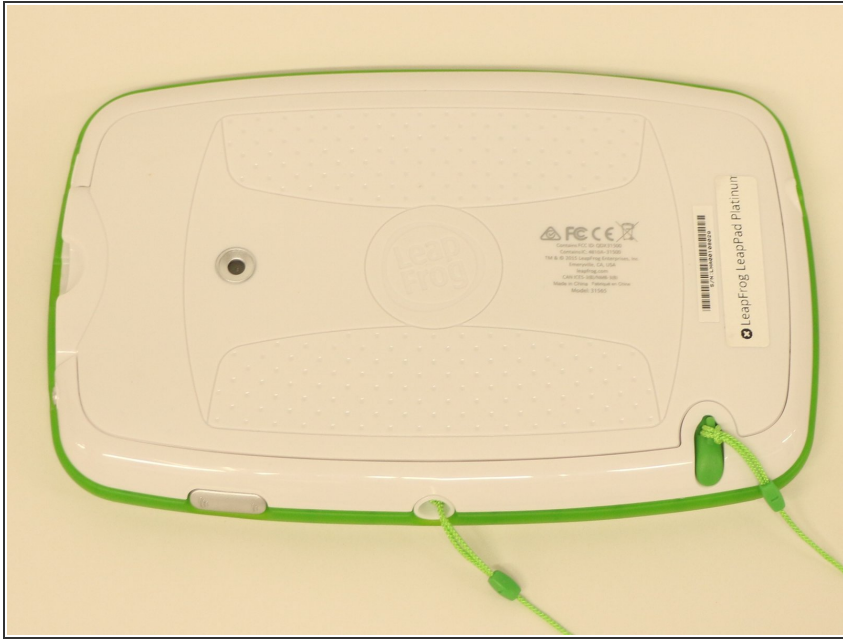
INTRODUCTION

If your LeapPad is unable to produce sound, you can use this guide to replace your speaker. Make sure your device is turned off before disassembling it, and take extra caution to not damage any of the internal components (e.g. ribbon cables).

TOOLS:

- [Phillips #1 Screwdriver](#) (1)
 - [iFixit Opening Tools](#) (1)
-

Step 1 — Battery



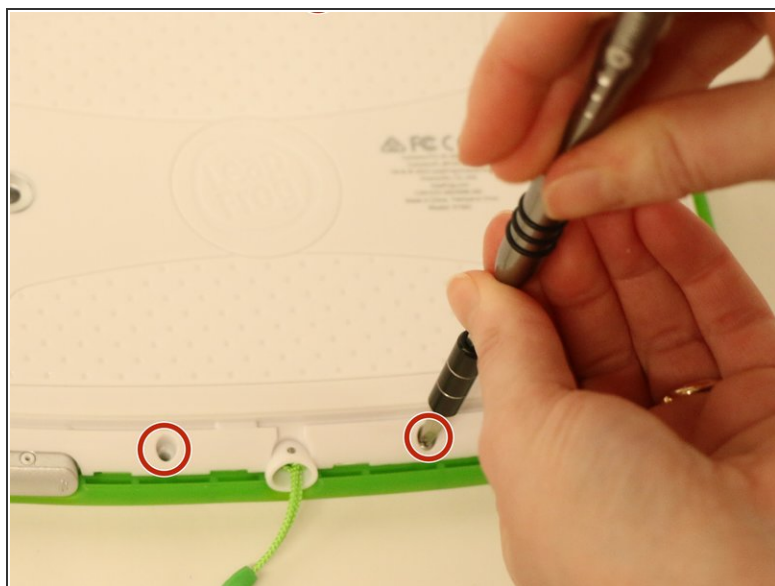
- Place your tablet on a flat surface with the screen facing down.

Step 2



- Using a plastic opening tool, pry off the plastic border by inserting it in the space between the green bumper and the white plastic on the edge of the tablet.
- ⓘ The border snaps into place, so don't be too worried if you hear a cracking noise while prying it off.

Step 3



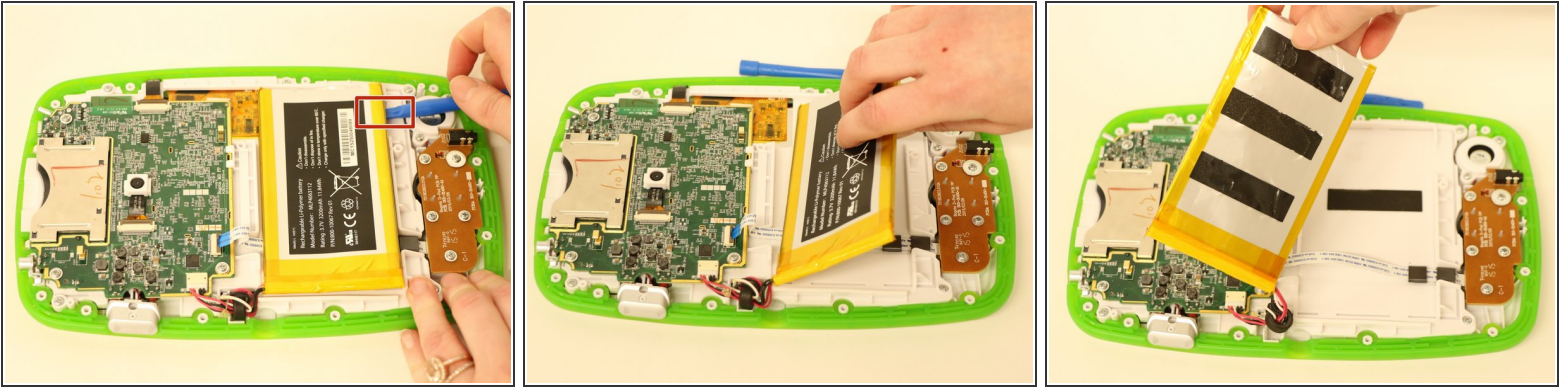
- Remove the 11 Phillips screws (8.0 mm) located around the edge of the back cover with a Phillips screwdriver.

Step 4



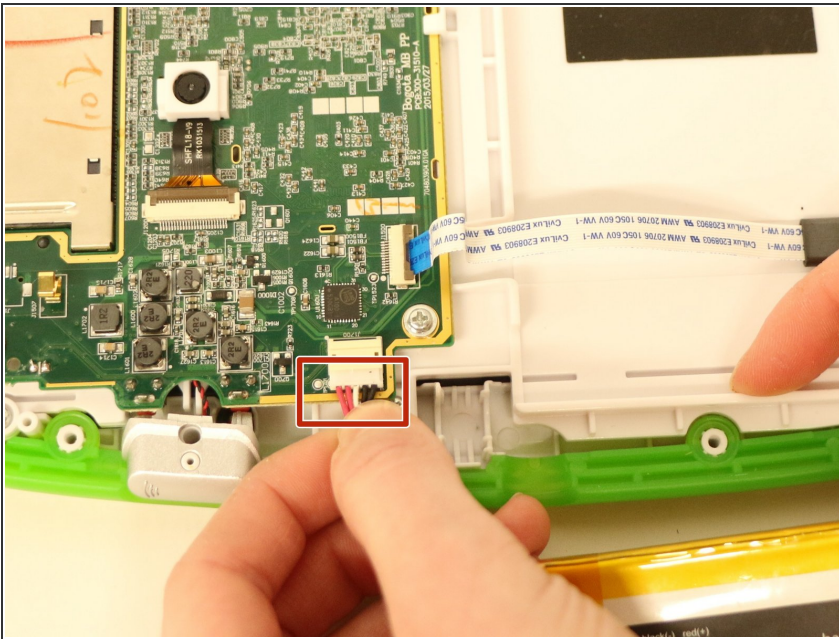
- Pull the back cover off of your device.

Step 5



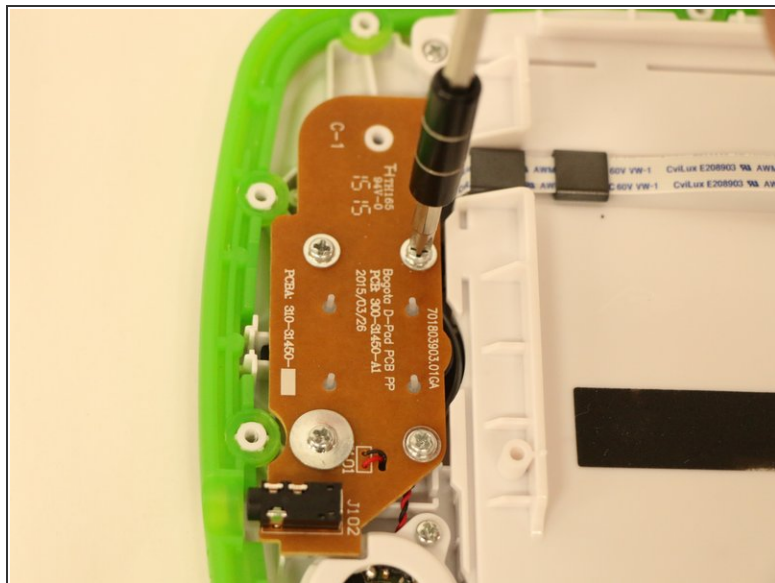
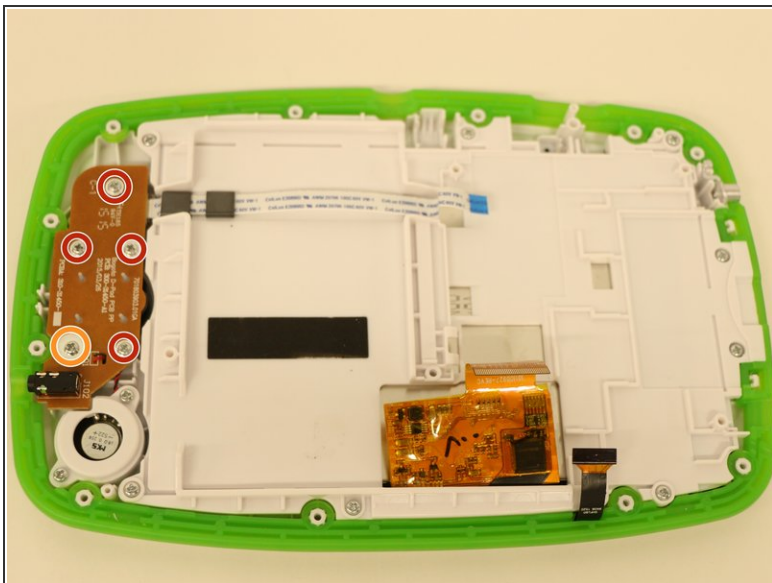
- Wedge a plastic opening tool underneath the battery and lift the battery up.
- ⓘ The battery is held in place by an adhesive strip, so it can be difficult to pry off.

Step 6



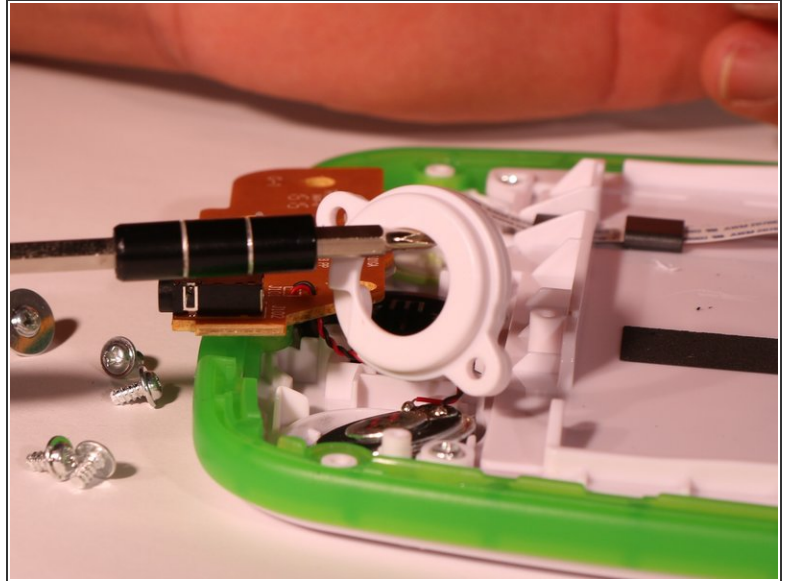
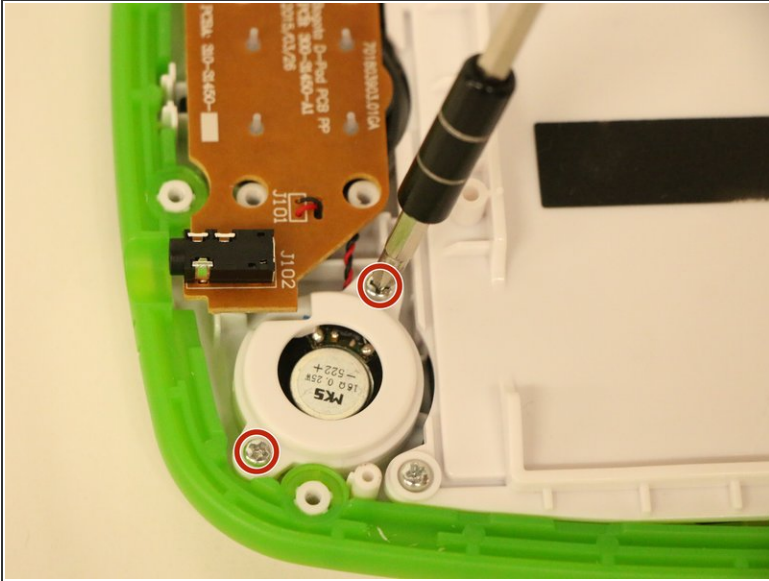
- The battery has red, black, and white wires that are all connected to the motherboard through a plastic clip. Unplug this plastic clip to fully remove the battery from your device.

Step 7 — Speaker



- Remove the brown speaker board located on the left side of the LeapPad by removing the following screws holding it in place:
 - Four 3.0mm Phillips screws
 - One 7.0mm Phillips screw

Step 8



- Locate the circular plastic speaker cover, remove the two 5.0mm Phillips screws holding it in place, and gently lift the cover away from the device.

Step 9



- Lift up the speaker board and locate the white ribbon attached to its underside.
- Fully remove the speaker board from the device by gently pulling the ribbon cables out of the slot.
- ⚠ Be gentle when working with the ribbon as it can be damaged easily.
- ⓘ Tweezers or a pointed plastic spudger will help guide the ribbon back through the black tabs when reassembling your device.

To reassemble your device, follow these instructions in reverse order.