



# LeapFrog LeapPad Ultimate Speaker Replacement

Replace broken LeapPad ultimate speaker to continue to use the device with sound.

Written By: Macy Mclennan



## INTRODUCTION

Conducting a speaker replacement for the LeapPad Ultimate is a moderate task. It requires a pair of curved tweezers and a Phillips head screwdriver.

---

### TOOLS:

- [Phillips #1 Screwdriver](#) (1)
  - [iFixit Opening Tools](#) (1)
  - [Tweezers](#) (1)
-

## Step 1 — Back Panel



- Flip over the Pad to its back side to begin the removal of the back panel.
- Begin by removing the blue rim along the edge of the device. It runs along the green silicone lining.
- ⚠ This is very difficult to remove , so do be patient. To help remove the seal, both a metal spudger and plastic opening tool may be used.
- ⓘ Remove the pen from its place before starting to avoid tangling.

## Step 2



- Once the blue rim is removed, the 12 screws will be visible.
- Use the Phillips #1 screwdriver to unscrew all 12 screws.

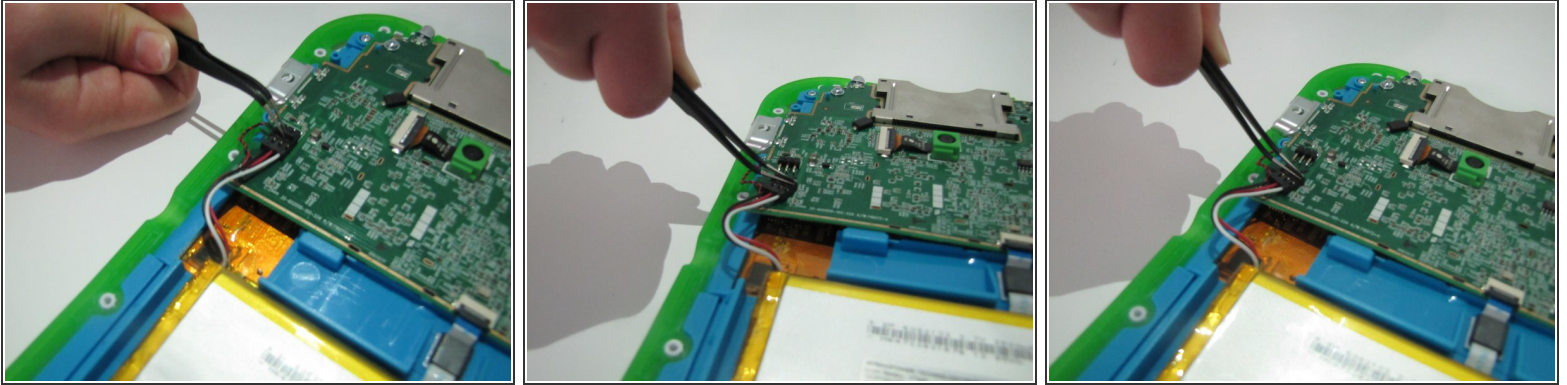
## Step 3 — Speaker



- Remove the back panel of the device exposing the internal components of the device.
- Once the internal components are exposed locate the point which connects the battery to the motherboard.
- ⓘ You will need to remove the battery to access the ribbon that connects the LeapPad speaker to the motherboard.

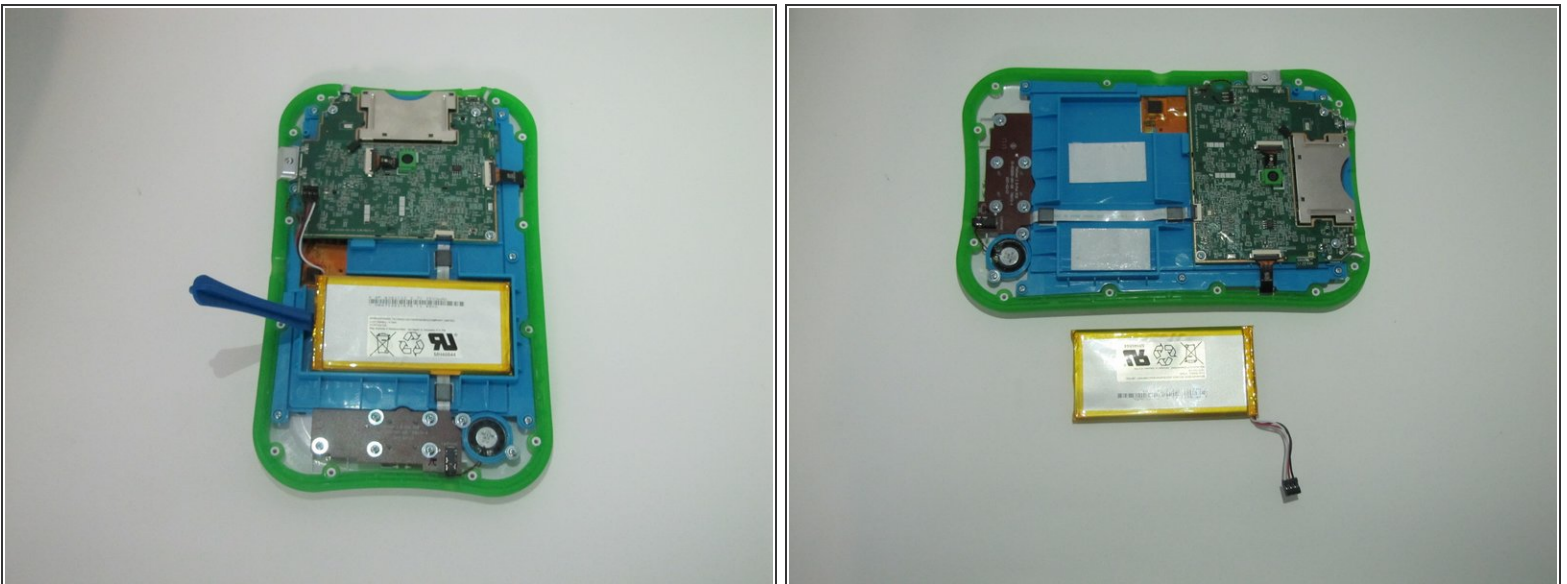


## Step 4



- The point connecting the battery and motherboard is made up of three wires, red, white, and black.
- The plastic portion on the motherboard's end will have a small notch on top. Pull the notch in the direction towards the battery with the curved tweezers. This will disconnect the wires from the motherboard.

## Step 5



- Carefully remove the battery from the LeapPad. Use an opening tool or a plastic spudger to gain leverage, if needed.

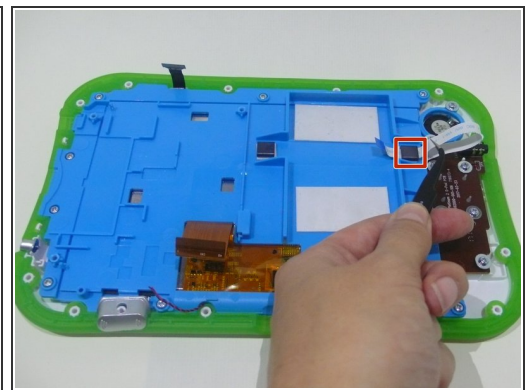
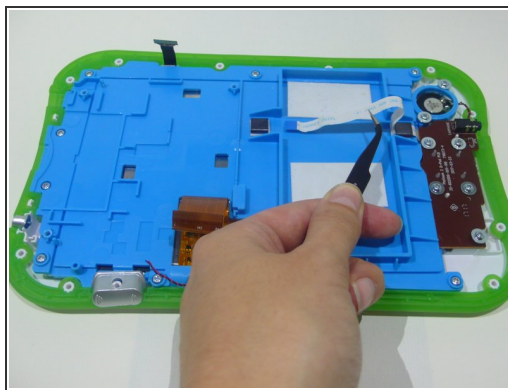
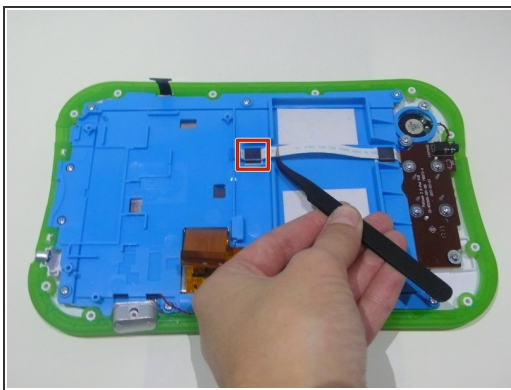
 Do not bend or puncture the battery.

## Step 6



- To begin removing the speaker, you must first disconnect it from the motherboard.
- Flip up the black switch found on the small white connection site with the blue ribbon that is located on the motherboard.

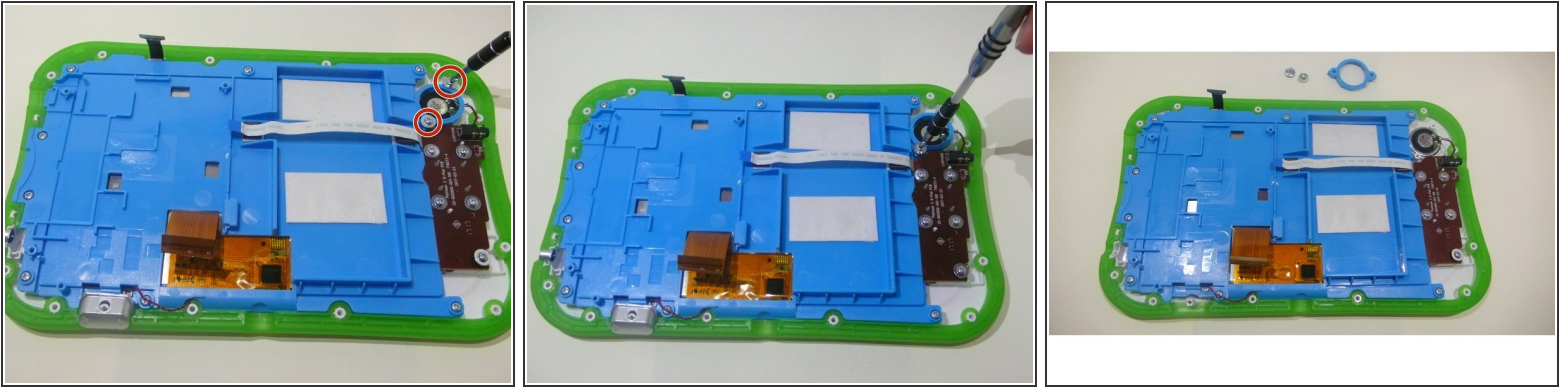
## Step 7



- Once the blue ribbon cable is disconnected from the motherboard, use tweezers to carefully pull the ribbon cable out of the slots.

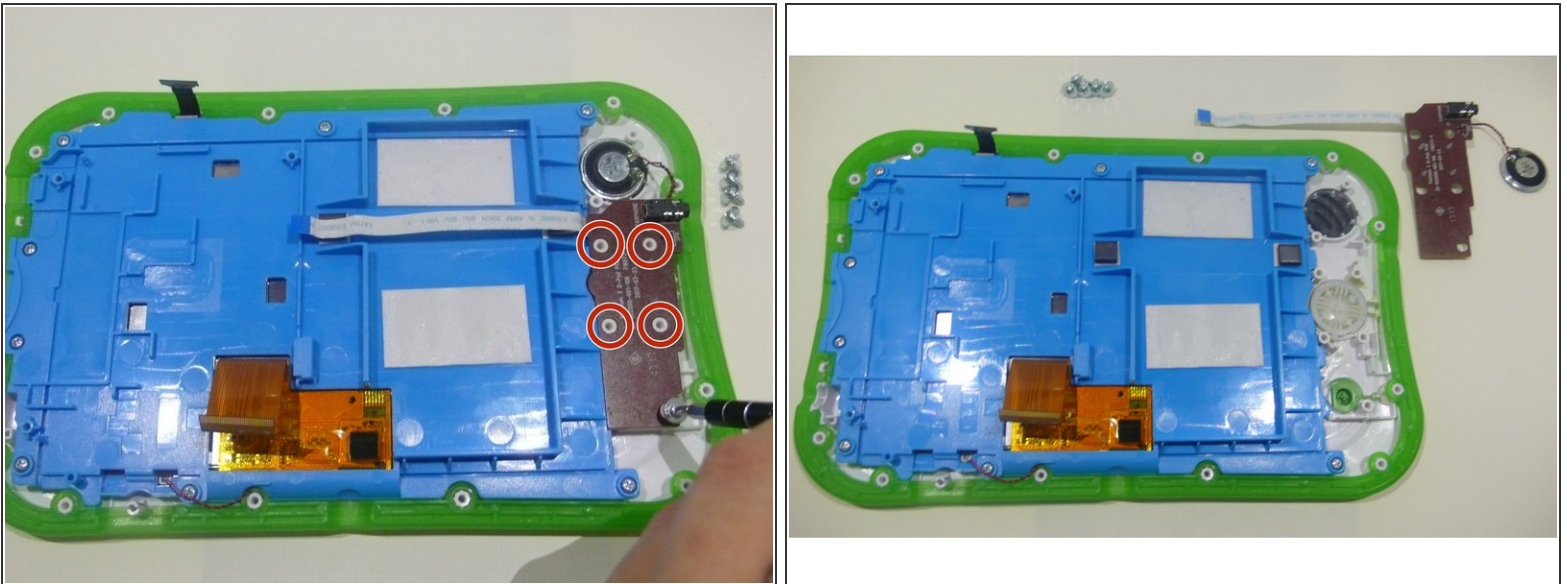


## Step 8



- Remove the circular plastic speaker and the 2 screws a Phillips #1 screwdriver. Gently lift the cover off of the device.

## Step 9



- On the brown speaker board, you will see 5 more screws. Remove all 5 of these screws with the same Phillips #1 screwdriver.
- Gently lift the speaker board, speaker, and attached ribbon cable from the device as one piece.

To reassemble your device, follow these instructions in reverse order.