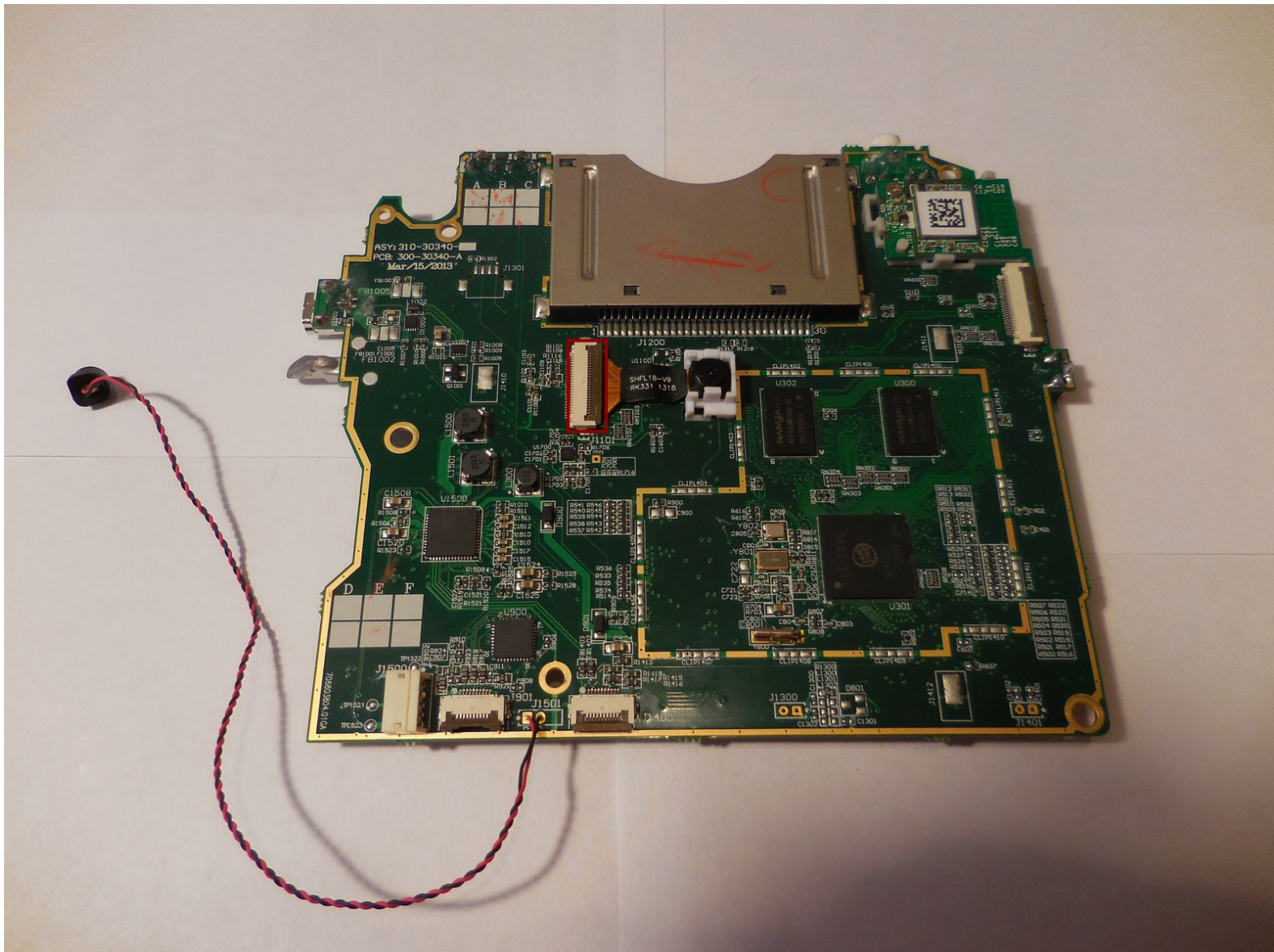




LeapFrog LeapPad Ultra Repair Back Camera Replacement

This guide will give step by step instructions on replacing the back camera.

Written By: Rocky Hirsch



INTRODUCTION

The camera is a component of the LeapPad that isn't necessary to function properly, although not being able to take pictures can be a big hindrance. This guide walks through the steps to replace the camera. Once again, take caution when handling the opened device so that the cables and components do not suffer damage.



TOOLS:

- [Tweezers](#) (1)
 - [Spudger](#) (1)
 - [Phillips #1 Screwdriver](#) (1)
 - [iFixit Opening Tools](#) (1)
-

Step 1 — Battery



- Remove the barcode covering the two screws on the lower back of the Leap Pad.

Step 2



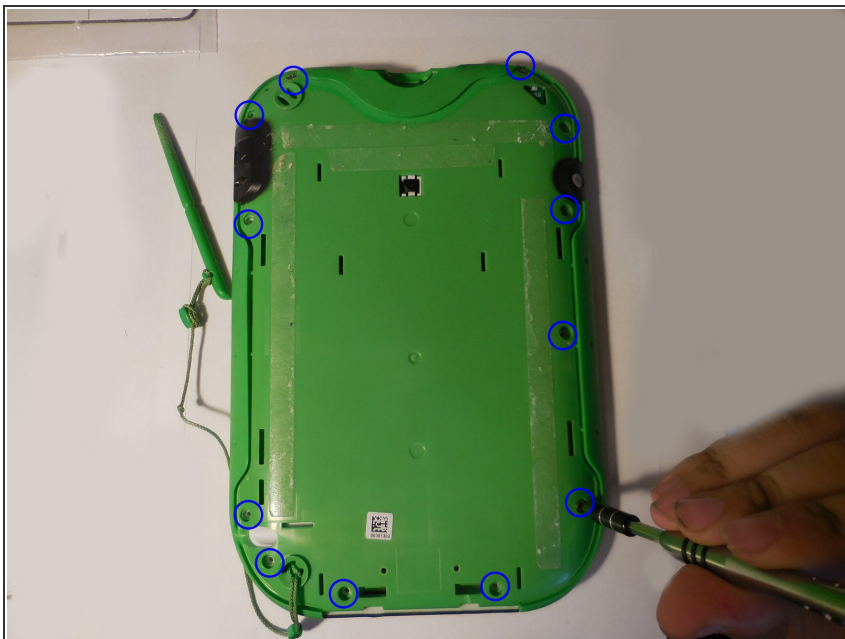
- Remove the two 5 mm screws that were covered by the sticker.

Step 3



- Using a plastic opening tool, pry off the outer protective child proof casing, starting from the bottom.

Step 4



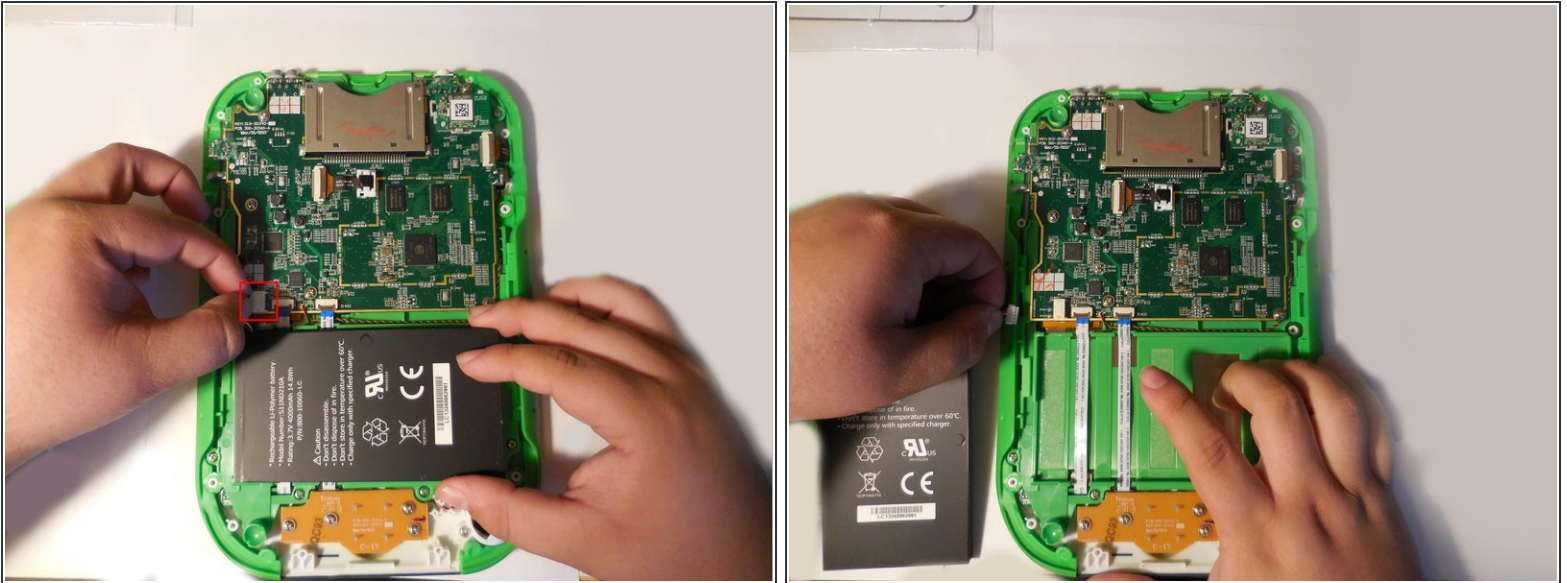
- Remove the 7 mm screw to the right of the cartridge dock, two 8 mm screws in the top left, and the nine 8 mm screws holding the the green shell.

Step 5



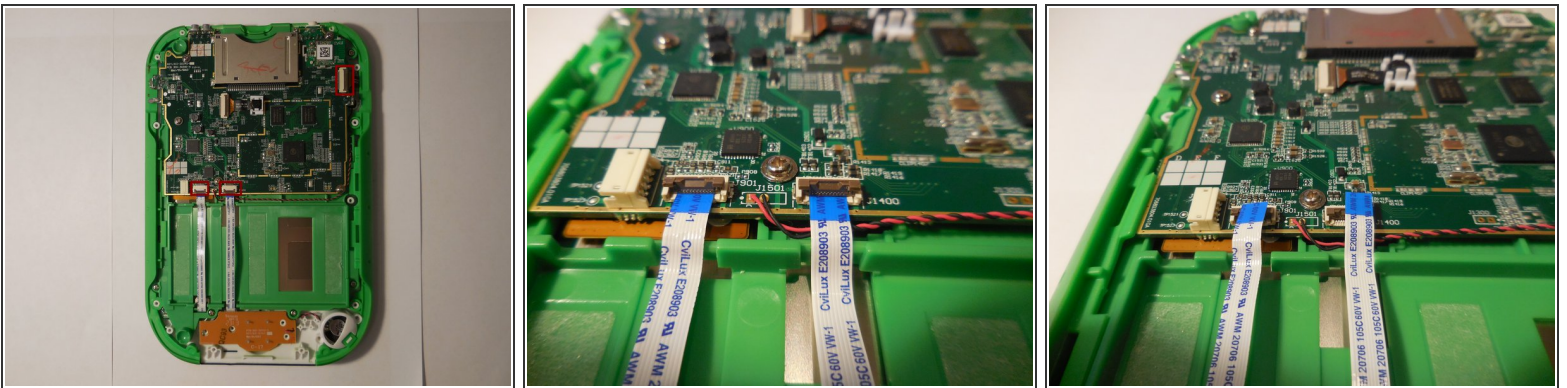
- Remove the hard plastic casing, exposing the motherboard and battery.

Step 6



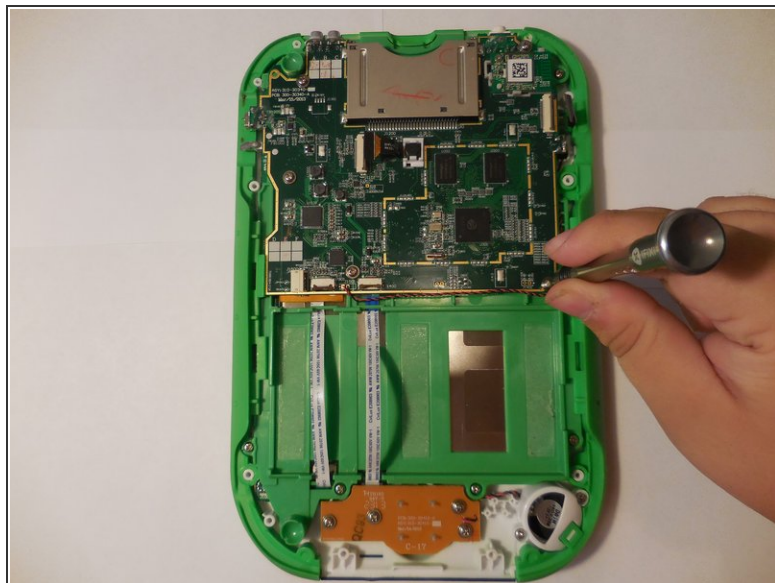
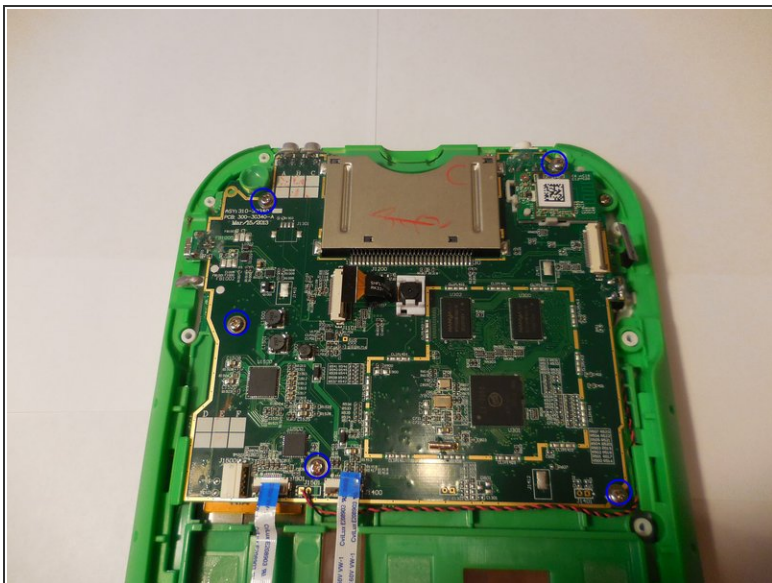
- The battery will be glued down, so use the flat end of the spudger to pry out the battery pack. Then using your fingers, grab the wire at the connection point and unplug the battery connector. Replace the battery with a new one.

Step 7 — Motherboard



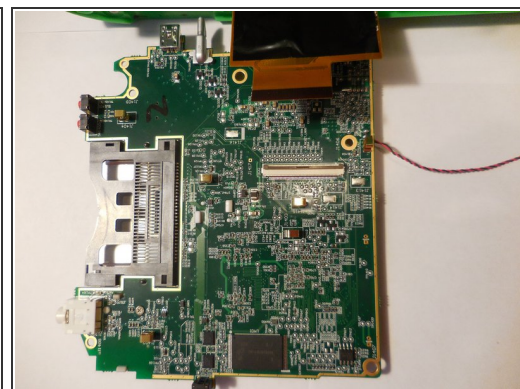
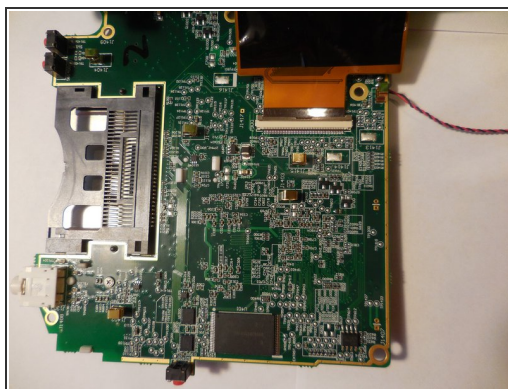
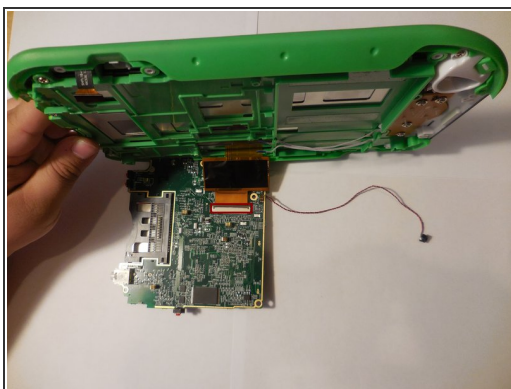
- Disconnect the three wires that will be visible on top of the motherboard. The wires need to be disconnected by pulling them up vertically.

Step 8



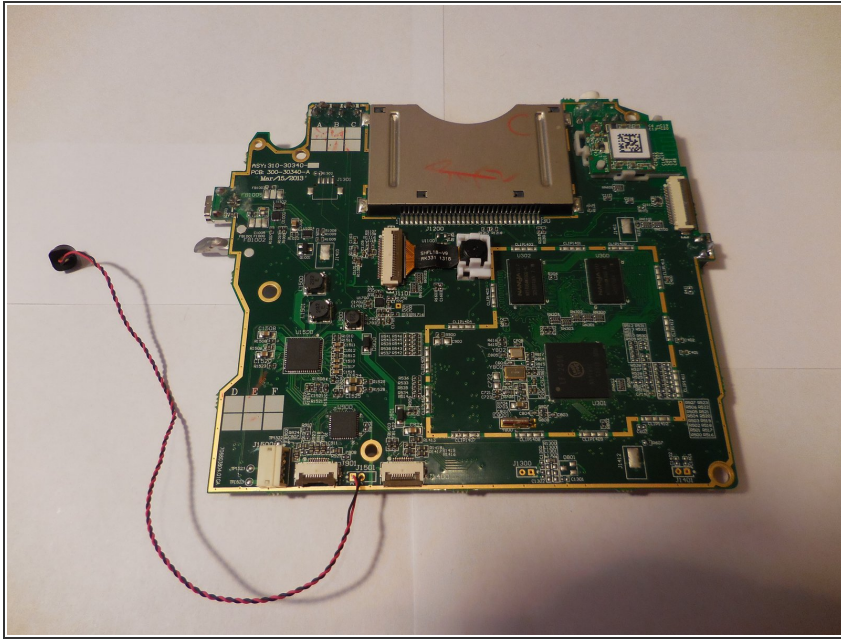
- Unscrew the four screws holding the motherboard into the housing.

Step 9



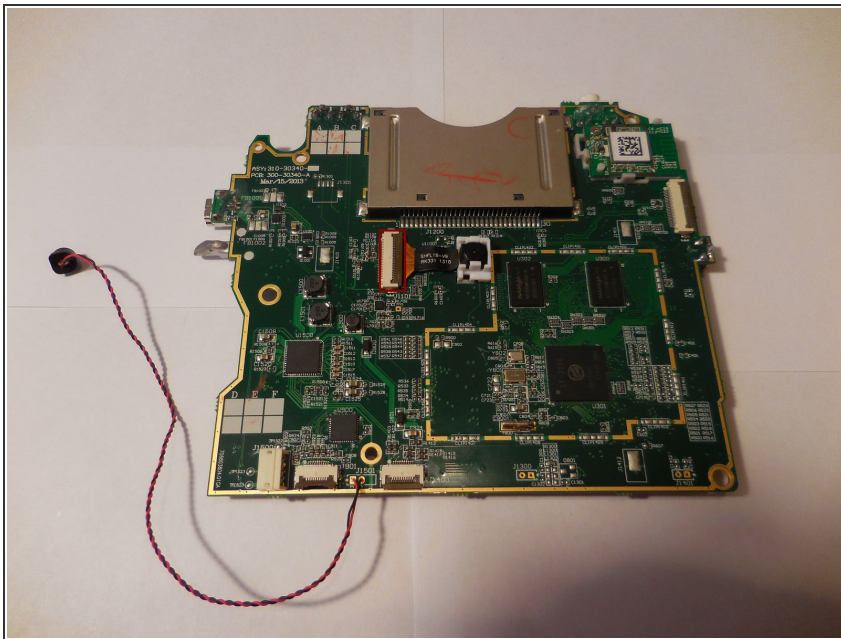
- Lift the motherboard up exposing the fourth and final wire. Once you lift up the motherboard you will need to pull down on the wire to disconnect.

Step 10



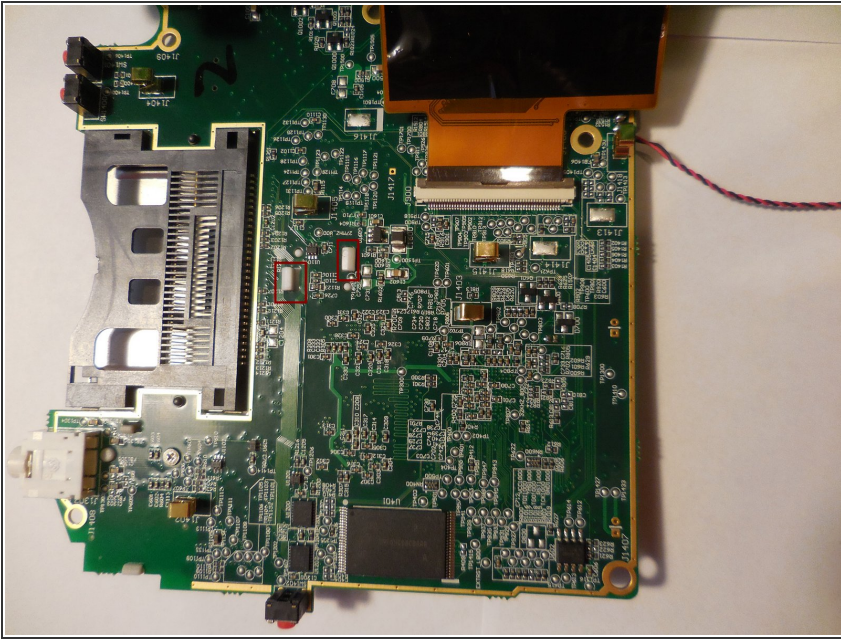
- Remove and replace motherboard.

Step 11 — Back Camera



- Disconnect the ribbon cable attached to the camera itself by using tweezers.

Step 12



- On the reverse side of the motherboard, there will be two clips that will need to be pushed together to remove.

To reassemble your device, follow these instructions in reverse order.