



LeapFrog LeapPad Ultra Repair Motherboard Replacement

This will be a step by step guide on replacing the motherboard.

Written By: Rocky Hirsch



INTRODUCTION

The motherboard is the brain of the device and controls all of the functions. This guide is for those of whom that are looking to replace their LeapPad's motherboard due to damage or issues. Like always, take extra caution when handling the device when its components are exposed. It is important to follow the guide word-by-word to avoid performing the steps incorrectly so that no further damage results.

TOOLS:

- [Spudger](#) (1)
 - [Phillips #1 Screwdriver](#) (1)
 - [Tweezers](#) (1)
 - [iFixit Opening Tools](#) (1)
-

Step 1 — Battery



- Remove the barcode covering the two screws on the lower back of the Leap Pad.

Step 2



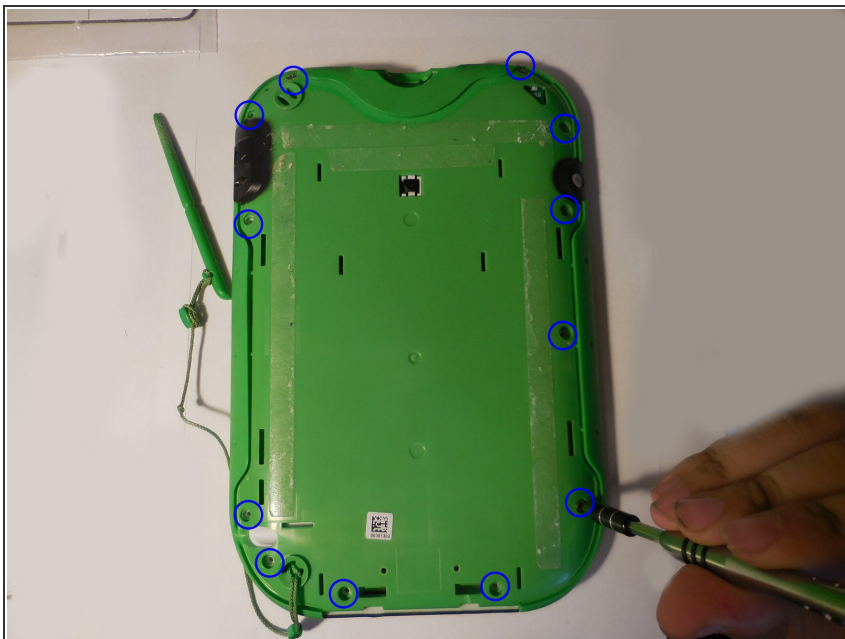
- Remove the two 5 mm screws that were covered by the sticker.

Step 3



- Using a plastic opening tool, pry off the outer protective child proof casing, starting from the bottom.

Step 4



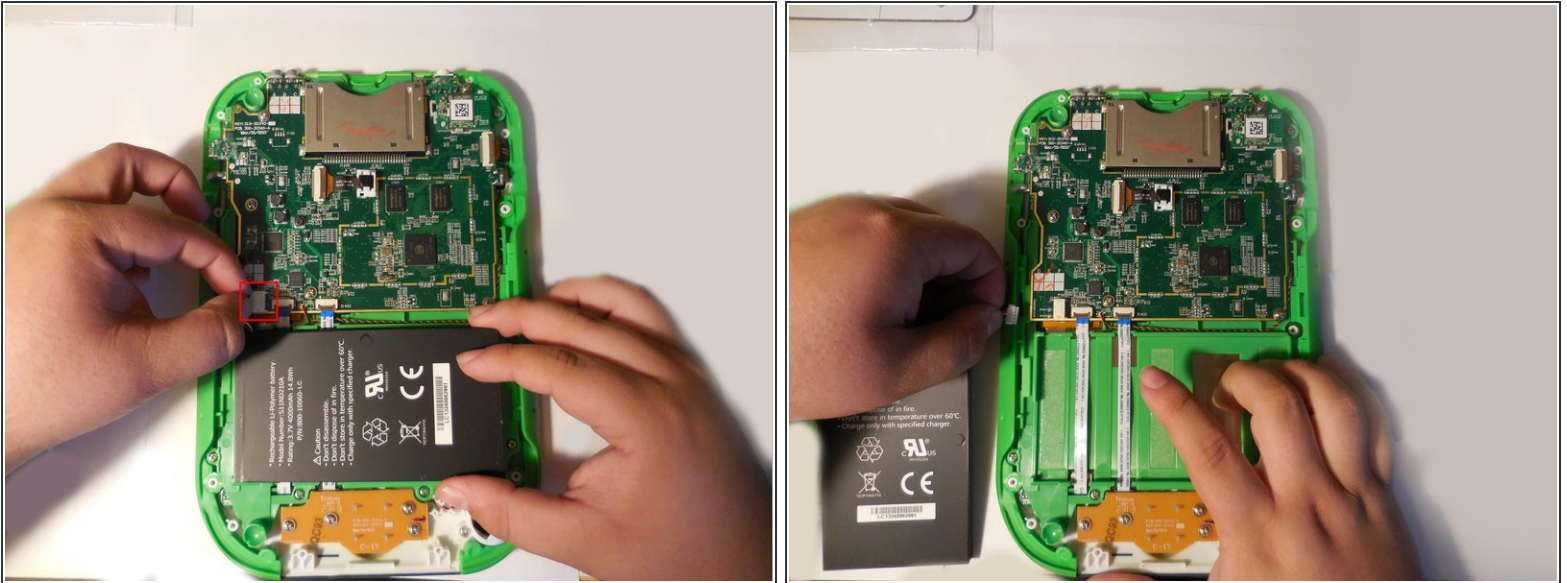
- Remove the 7 mm screw to the right of the cartridge dock, two 8 mm screws in the top left, and the nine 8 mm screws holding the the green shell.

Step 5



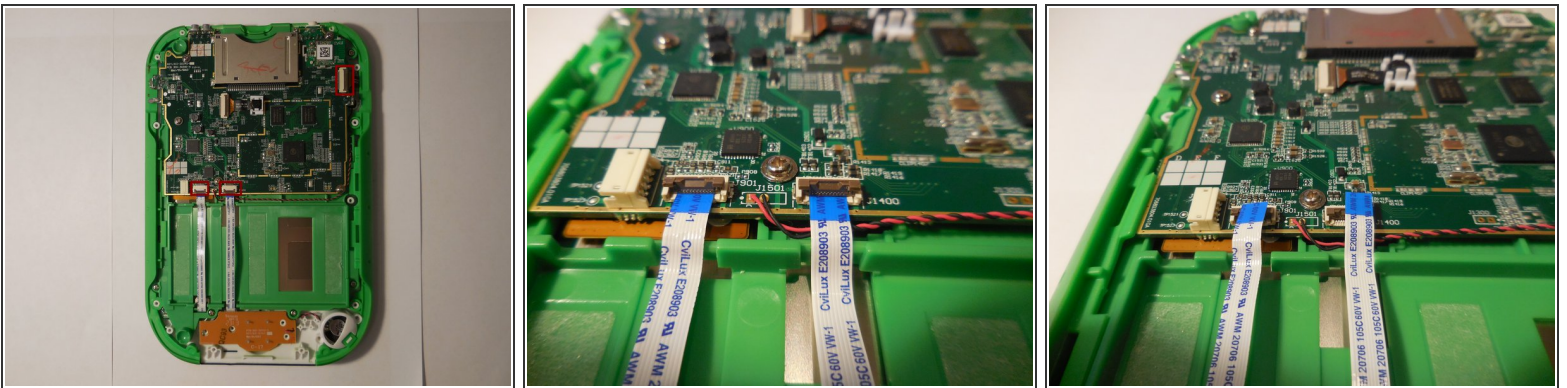
- Remove the hard plastic casing, exposing the motherboard and battery.

Step 6



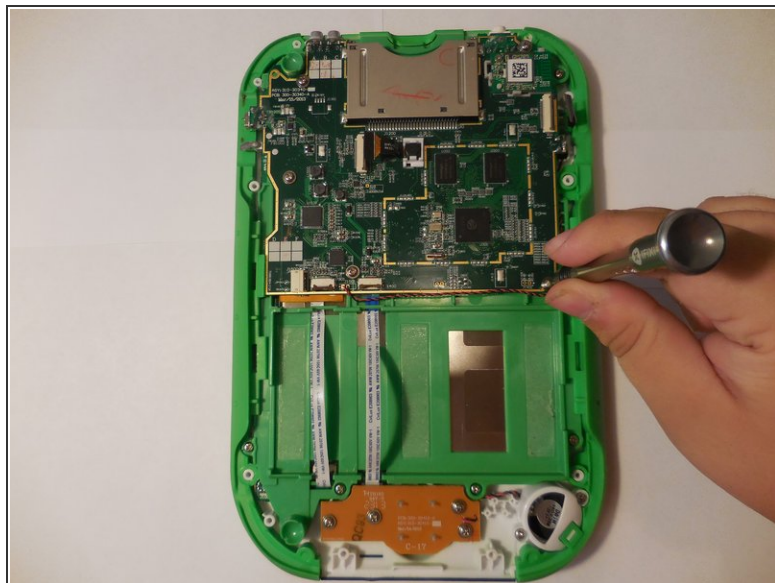
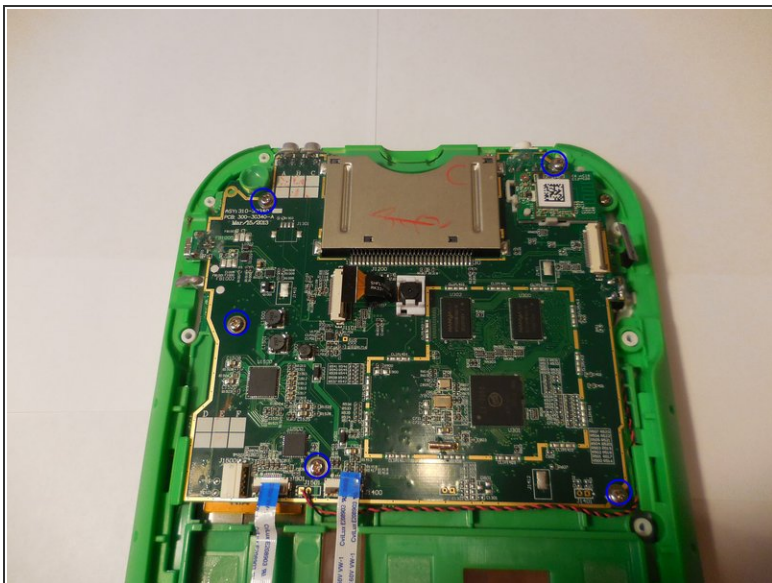
- The battery will be glued down, so use the flat end of the spudger to pry out the battery pack. Then using your fingers, grab the wire at the connection point and unplug the battery connector. Replace the battery with a new one.

Step 7 — Motherboard



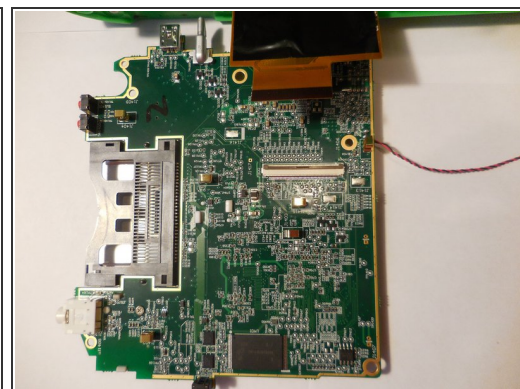
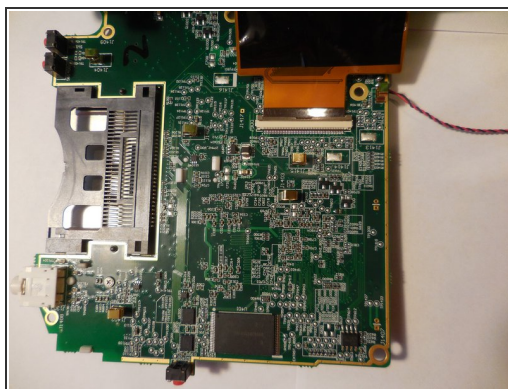
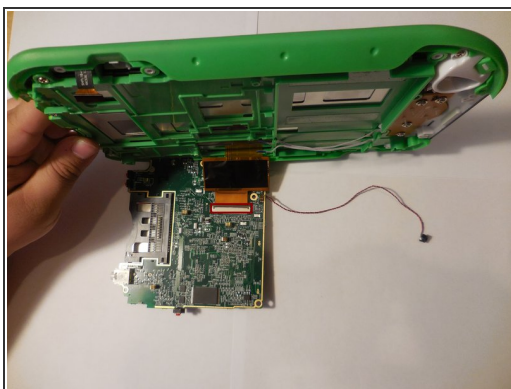
- Disconnect the three wires that will be visible on top of the motherboard. The wires need to be disconnected by pulling them up vertically.

Step 8



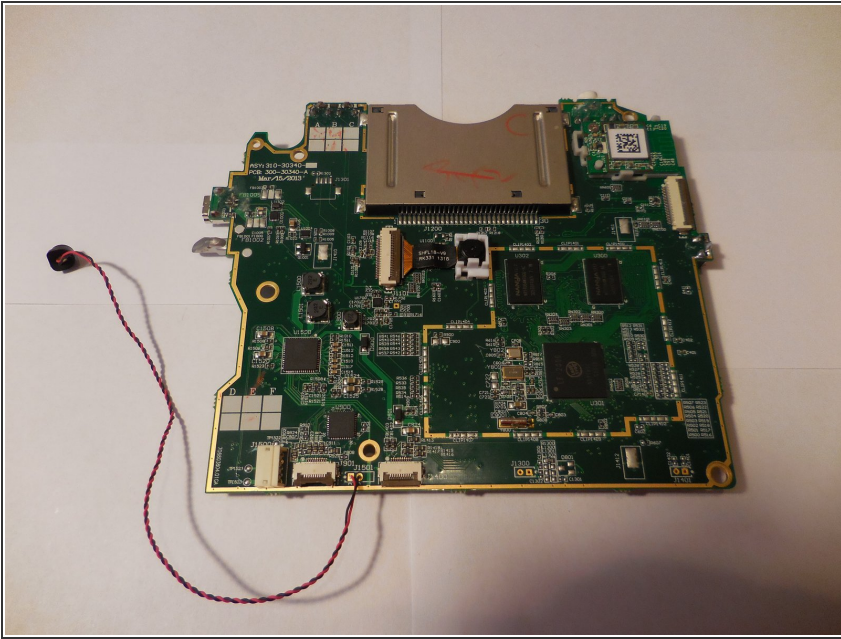
- Unscrew the four screws holding the motherboard into the housing.

Step 9



- Lift the motherboard up exposing the fourth and final wire. Once you lift up the motherboard you will need to pull down on the wire to disconnect.

Step 10



- Remove and replace motherboard.

To reassemble your device, follow these instructions in reverse order.