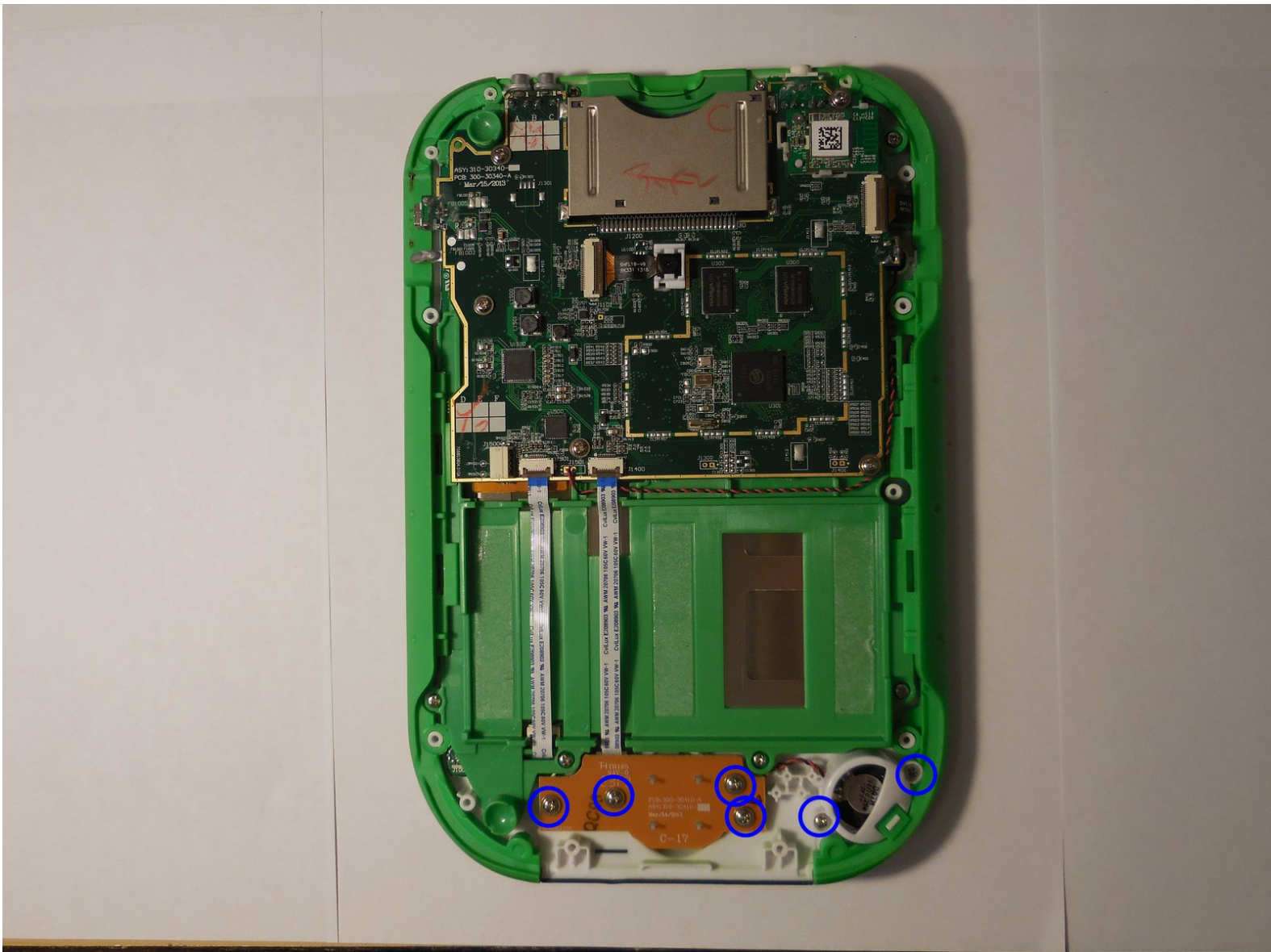




# LeapFrog LeapPad Ultra Repair Speaker Replacement

This guide will teach you how to remove and replace a broken, or faulty speak in the LeapFrog LeapPad Ultra.

Written By: Carlos Ortiz



This document was generated on 2019-11-03 07:47:27 PM (MST).

---

## INTRODUCTION

The purpose of this guide is to show how to replace a damaged speaker with one that is working so that the LeapPad functions properly. However, it is still possible to still use the LeapPad without a working speaker. For this guide take extra caution to not damage any of the internal components for they can be very fragile (i.e. ribbon cables.)



### TOOLS:

- [iFixit Opening Tools](#) (1)
  - [Spudger](#) (1)
  - [64 Bit Driver Kit](#) (1)
-

## Step 1 — Battery



- Remove the barcode covering the two screws on the lower back of the Leap Pad.

## Step 2



- Remove the two 5 mm screws that were covered by the sticker.

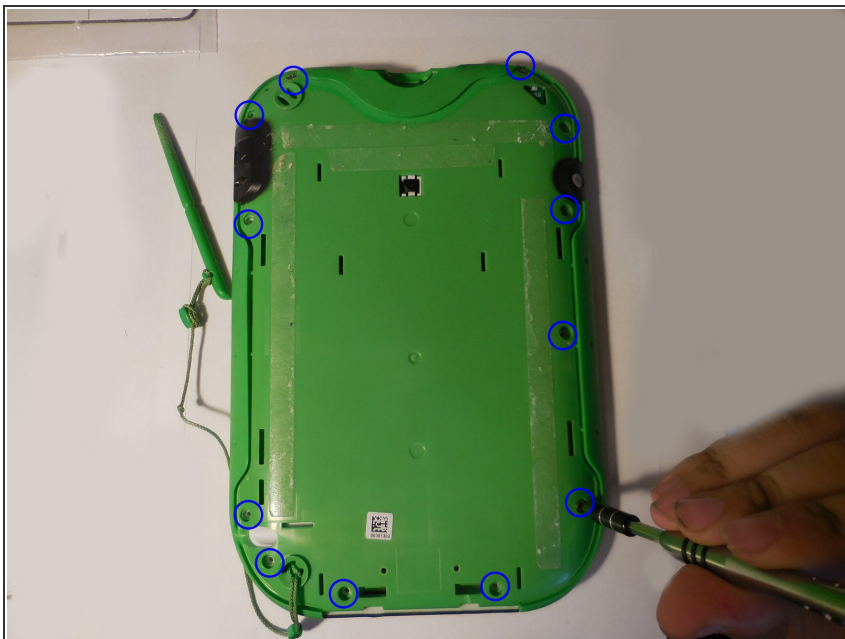
## Step 3



- Using a plastic opening tool, pry off the outer protective child proof casing, starting from the bottom.



## Step 4



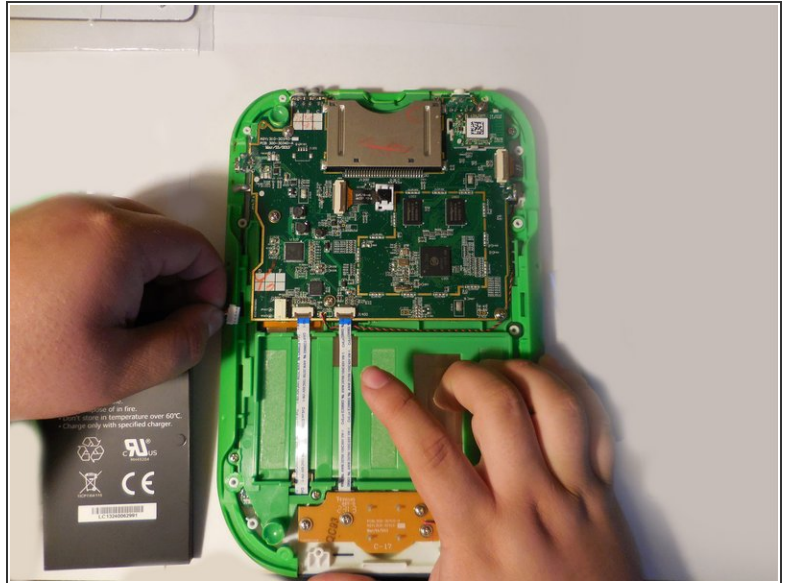
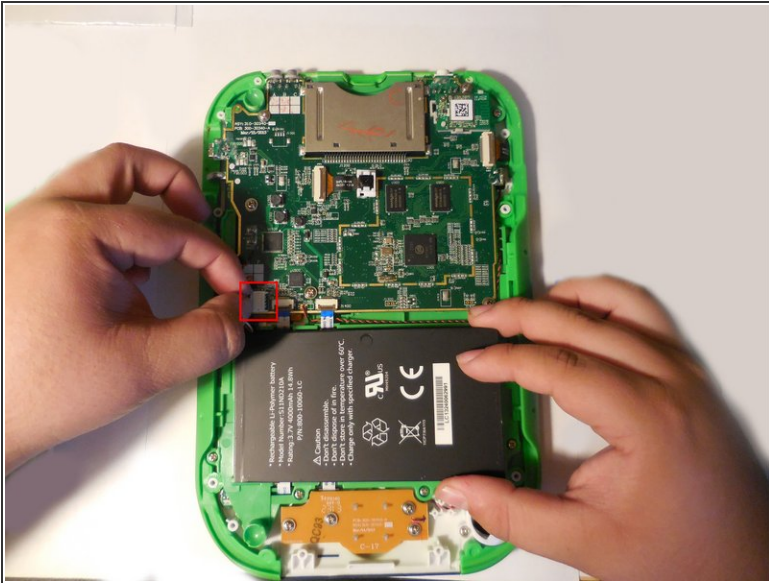
- Remove the 7 mm screw to the right of the cartridge dock, two 8 mm screws in the top left, and the nine 8 mm screws holding the the green shell.

## Step 5



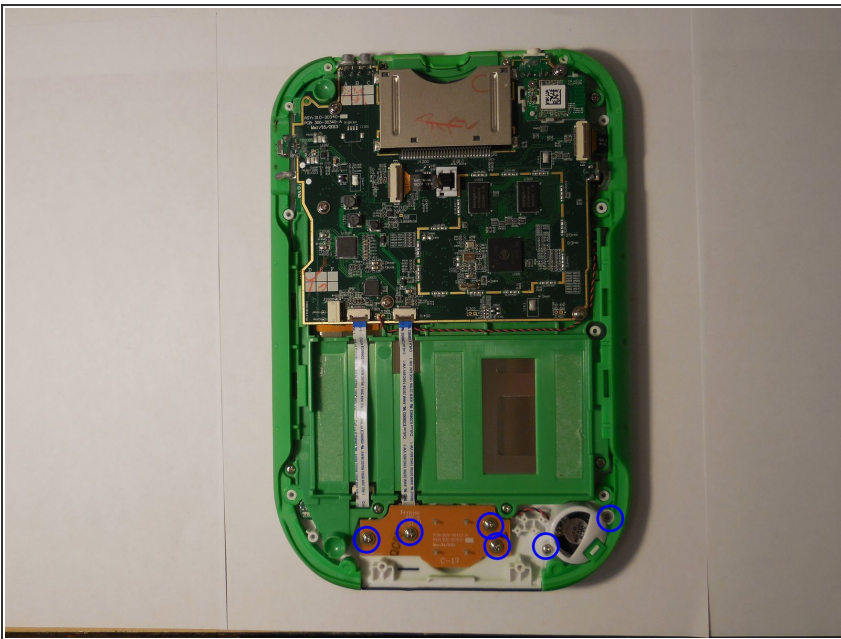
- Remove the hard plastic casing, exposing the motherboard and battery.

## Step 6



- The battery will be glued down, so use the flat end of the spudger to pry out the battery pack. Then using your fingers, grab the wire at the connection point and unplug the battery connector. Replace the battery with a new one.

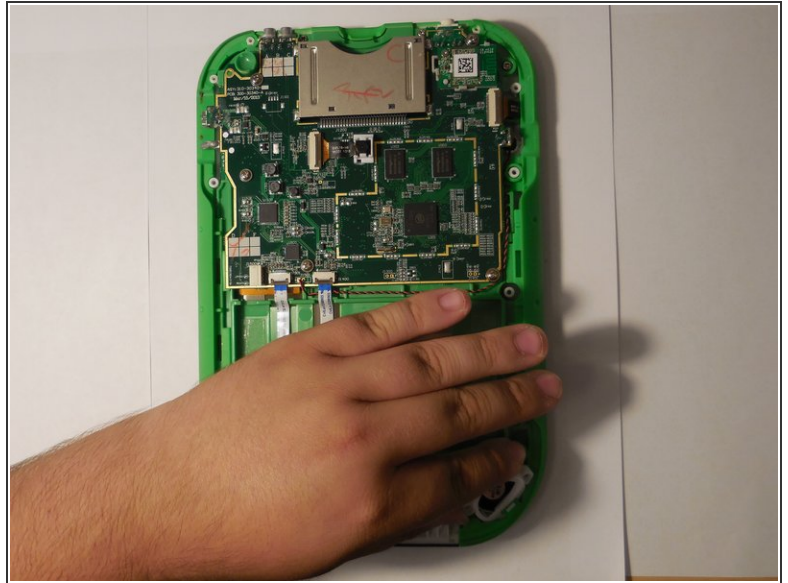
## Step 7 — Speaker



- Find the screws on the bottom of the device holding down the button and speakers board.



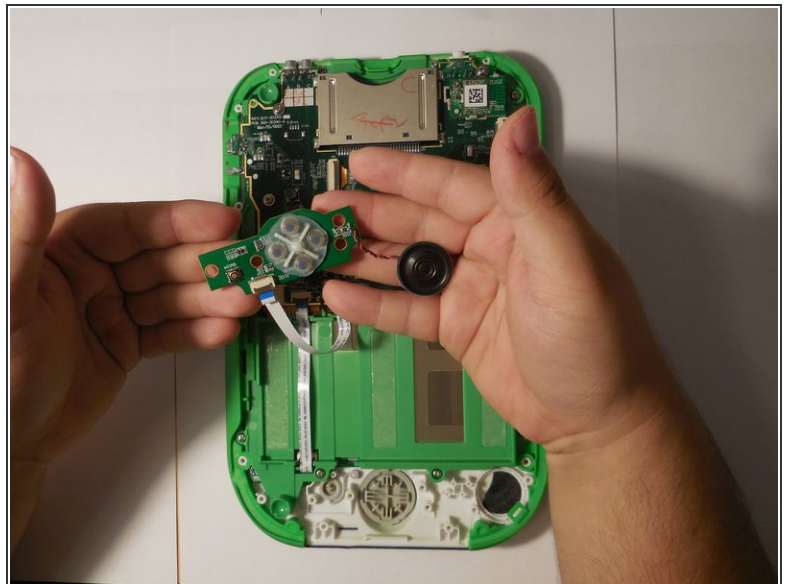
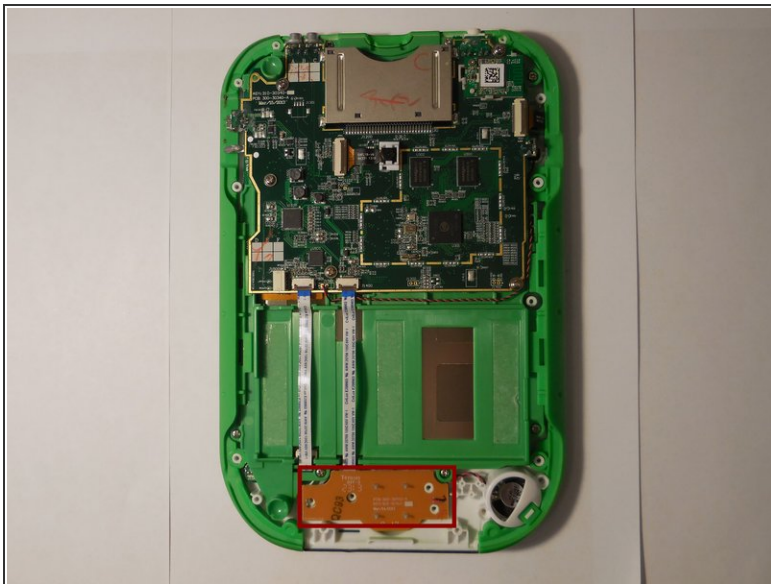
## Step 8



- There should be a plastic covering over the speaker, carefully pull on the opposite side from the plastic clip holding it in place.

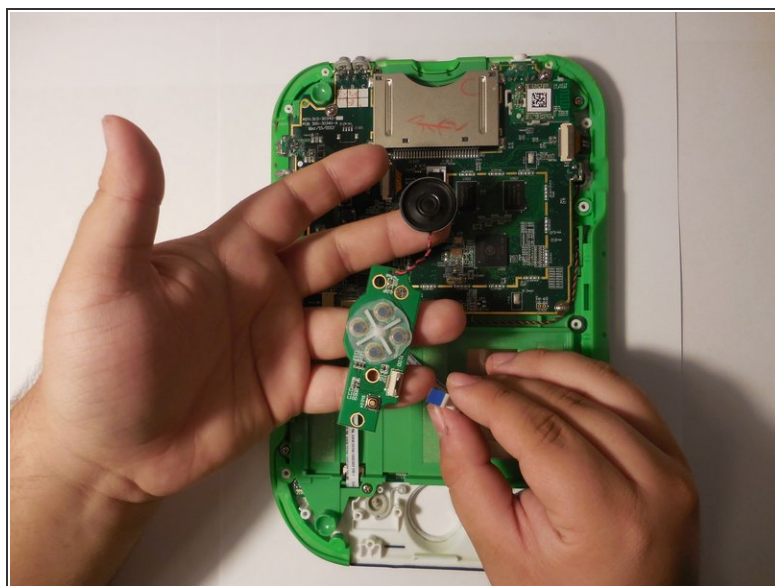
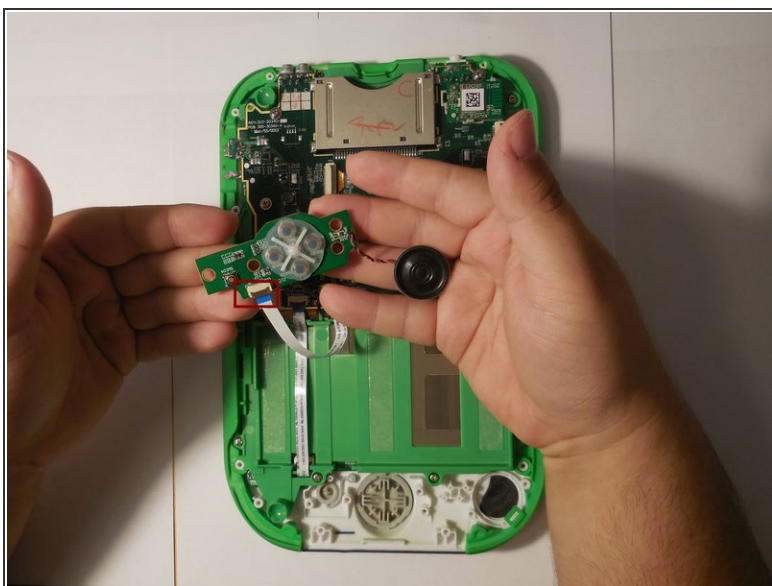
⚠ Excessive force can break the plastic clip, only use enough force to remove it gently

## Step 9



- Lift the button and speaker board, and turn it over, revealing the other side of the board.

## Step 10



- Find the ribbon cable connection and with a small plastic tool flip the plastic holding it down up.
- You can now safely remove the ribbon cable by gently pulling it out of the slot.

⚠ Trying to remove the cable with brute force will damage the cable.

To reassemble your device, follow these instructions in reverse order.