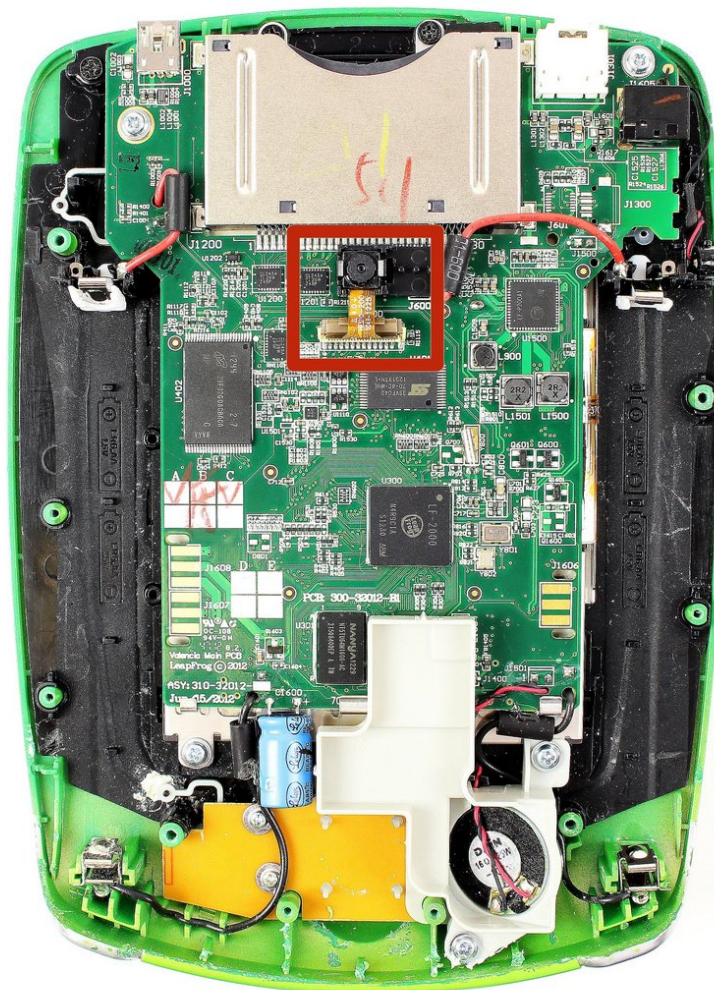




LeapFrog LeapPad2 Explorer Back Camera Replacement

Replace the back camera on your Leap Frog device.

Written By: Nupur Garg



INTRODUCTION

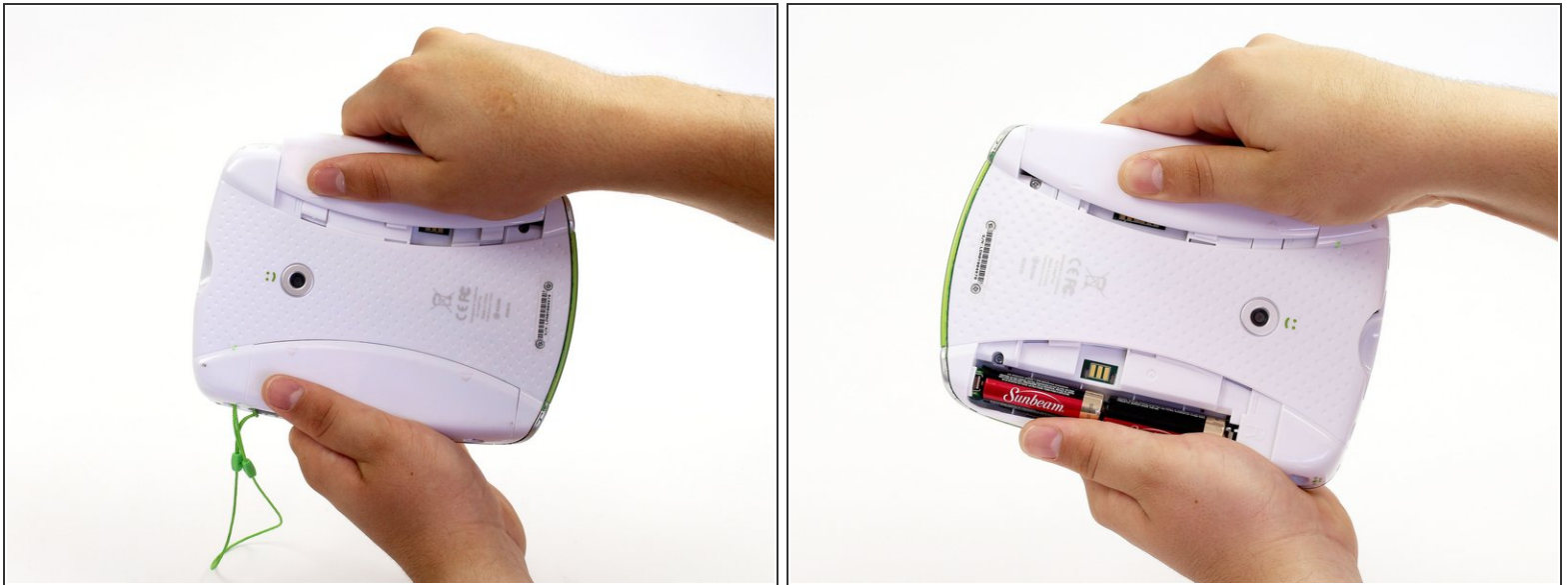
Use this guide in order to capture the essence of replacing your back camera, enabling you to capture the world!



TOOLS:

- [Phillips #00 Screwdriver](#) (1)
 - [iFixit Opening Tools](#) (1)
-

Step 1 — Battery



- Before disassembling your LeapPad, ensure your device is shut off.
- Push outward on the plastic side panels to remove and reveal battery.
- The panels should detach fully from the main device.


Step 2



- Push down from the positive end of the battery towards the negative end to pry the battery up out of its dispenser.
- Remove all four AA alkaline batteries from the device.

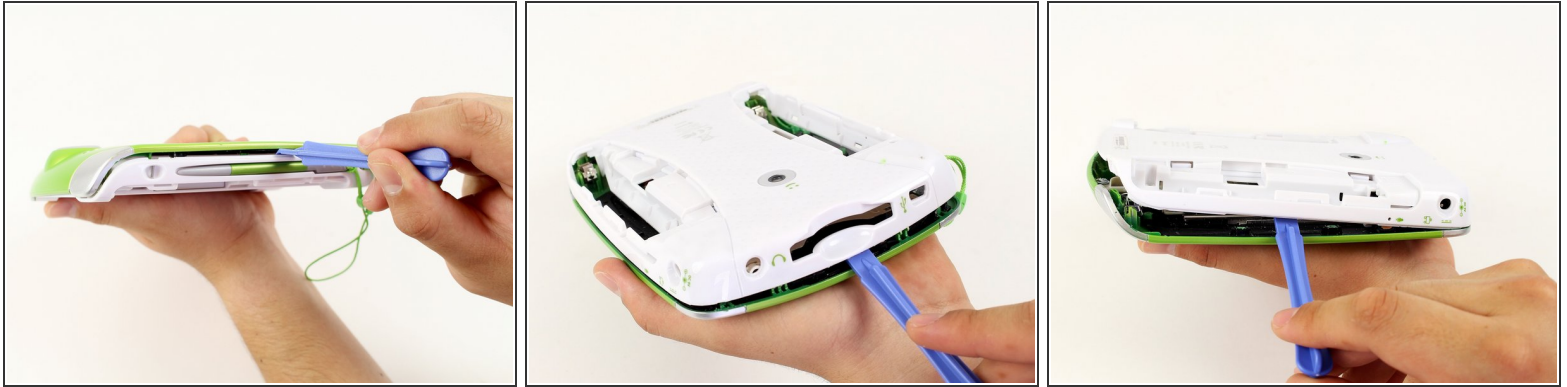
Step 3 — Back Cover



 This step will void your device warranty.

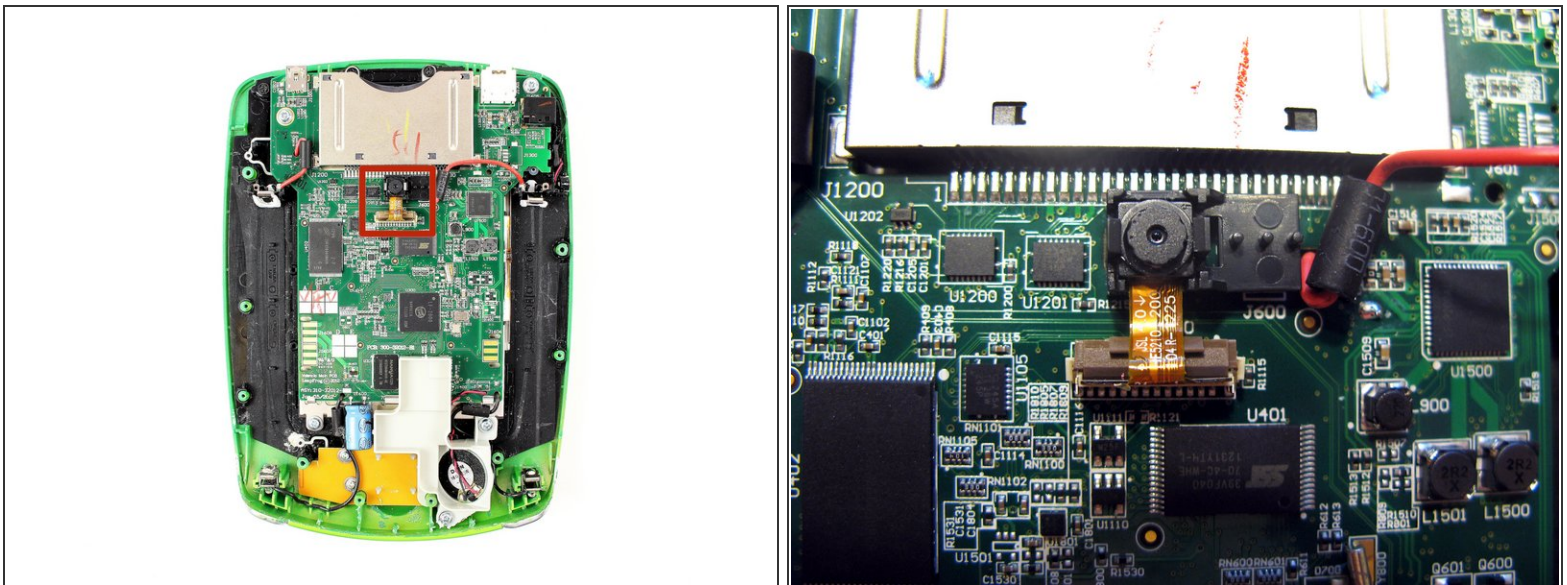
- Remove the following screws securing the back cover to the main device:
 - Two 10.0 mm Phillips screws
 - Four 4.0 mm Phillips screws
 - Three 3.0 mm Phillips screws

Step 4



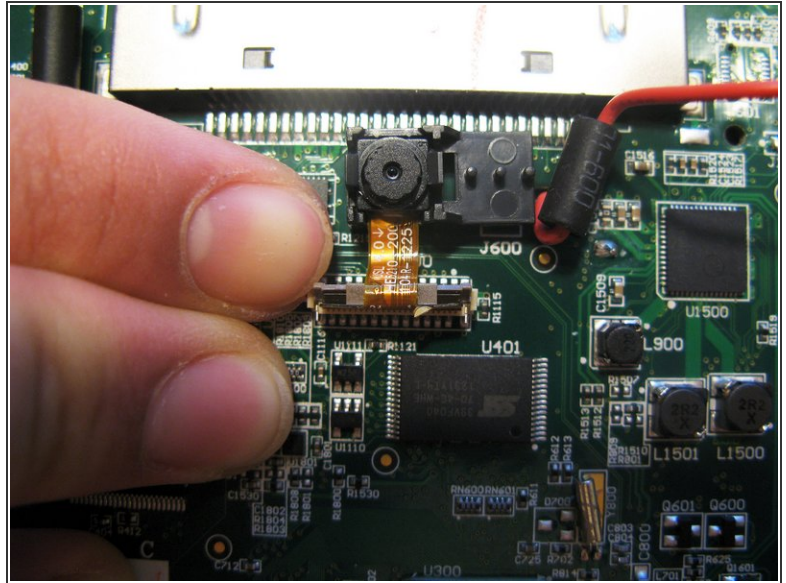
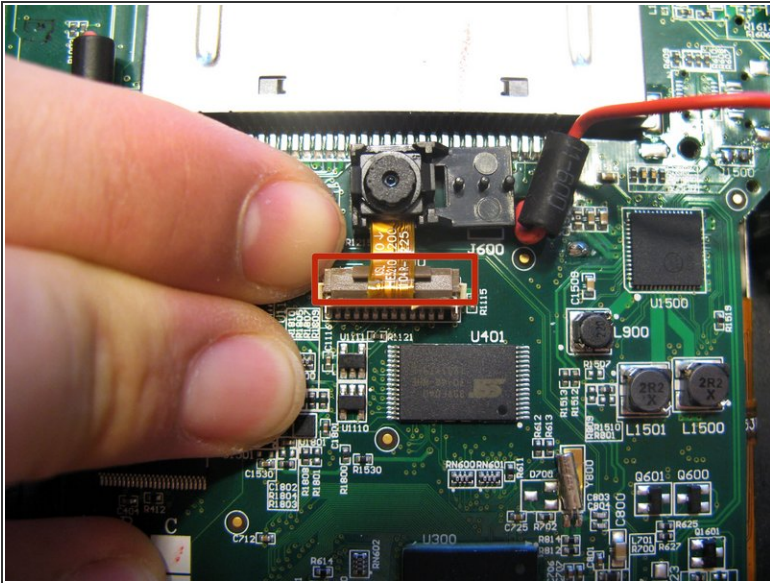
- Insert a plastic opening tool into the seam between the front and rear covers to detach the back cover from the rest of the device.
- Move the plastic opening tool around the perimeter of the LeapPad2.
- Lift up and remove the rear case from the tablet.
- ❗ A butter knife can help when prying the device.

Step 5 — Back Camera



- Locate the back camera below the game cartridge.

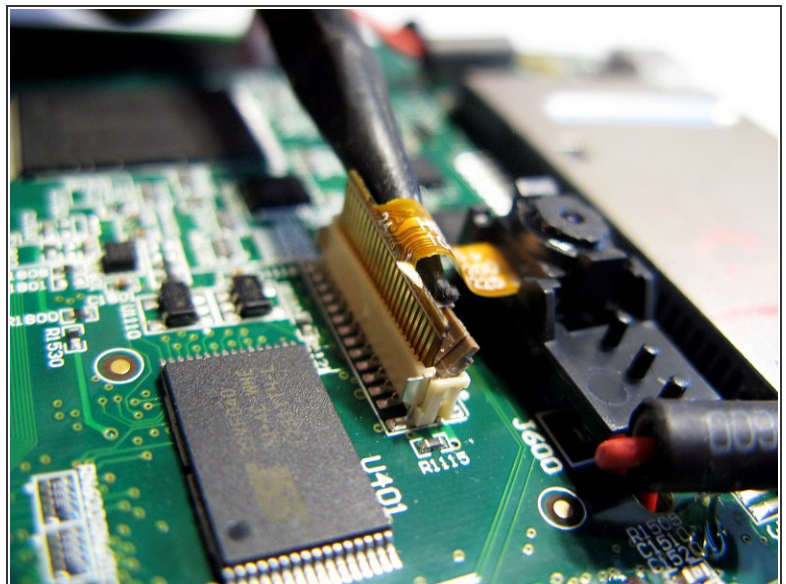
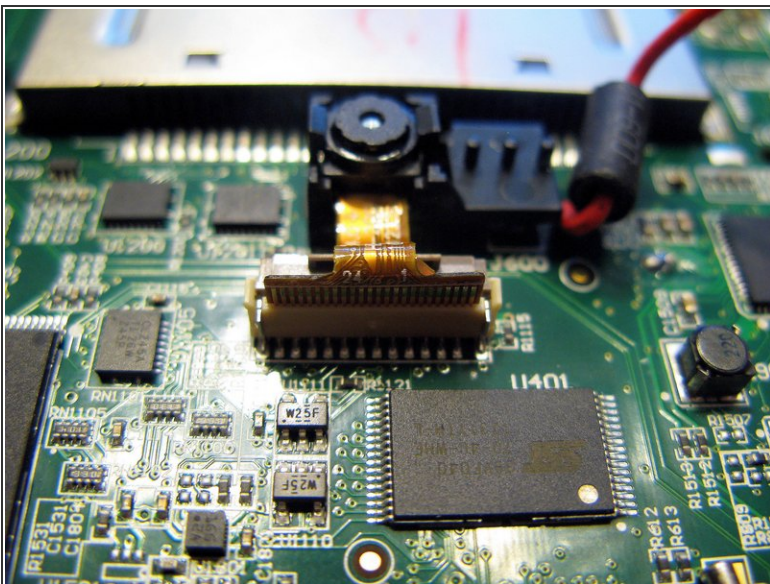
Step 6



- To safely remove the ribbon cable, first you must pull up the retaining flap.

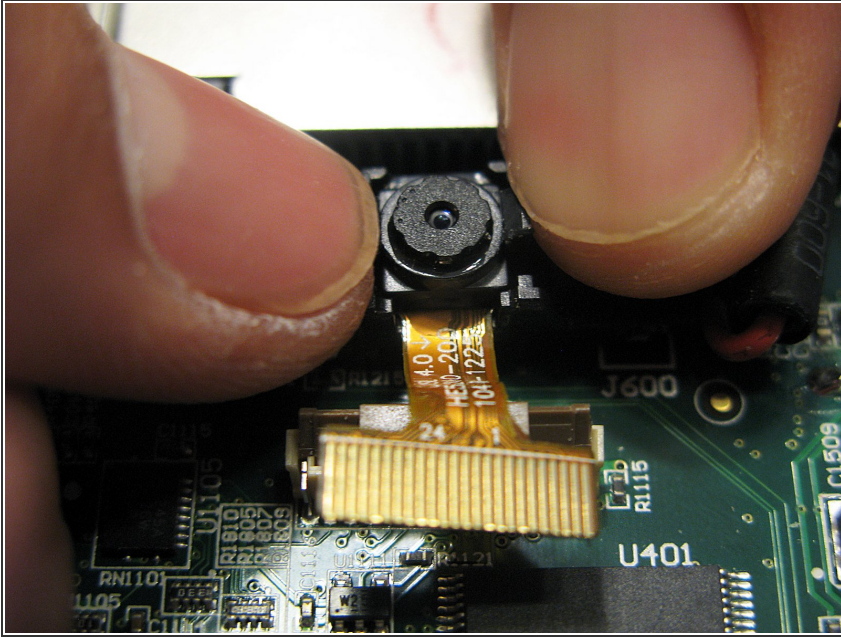
⚠ Removing or reinserting the cable by brute force can damage it.

Step 7



- Pull up using a thin plastic tool to disconnect the ribbon connecting the camera to the motherboard.

Step 8



- Gently remove the back camera from your motherboard by pushing the black casing away from the camera.

To reassemble your device, follow these instructions in reverse order.