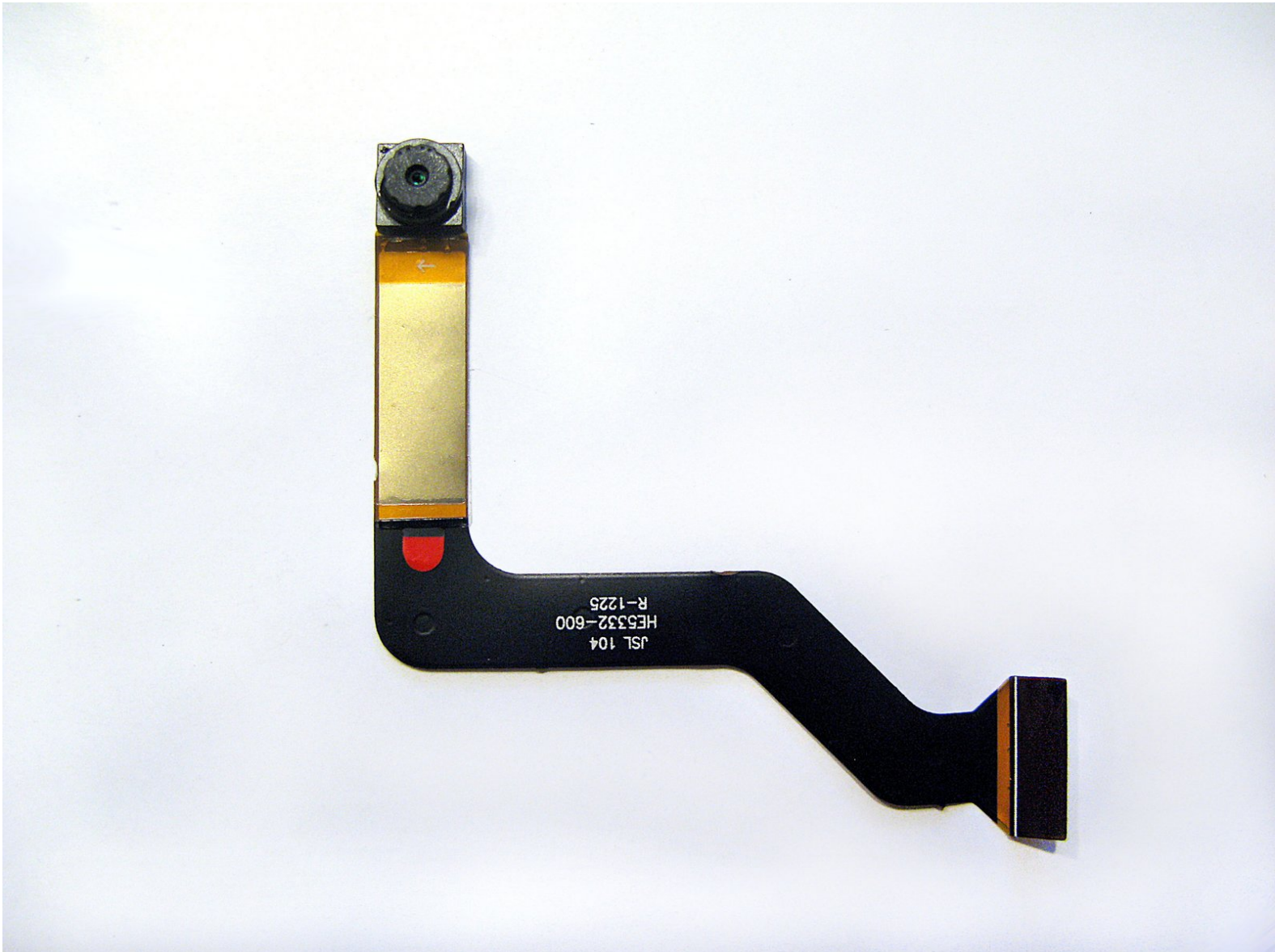




LeapFrog LeapPad2 Explorer Front Camera Replacement

Replacing the front camera in your LeapFrog LeapPad2 Explorer.

Written By: Nupur Garg



INTRODUCTION

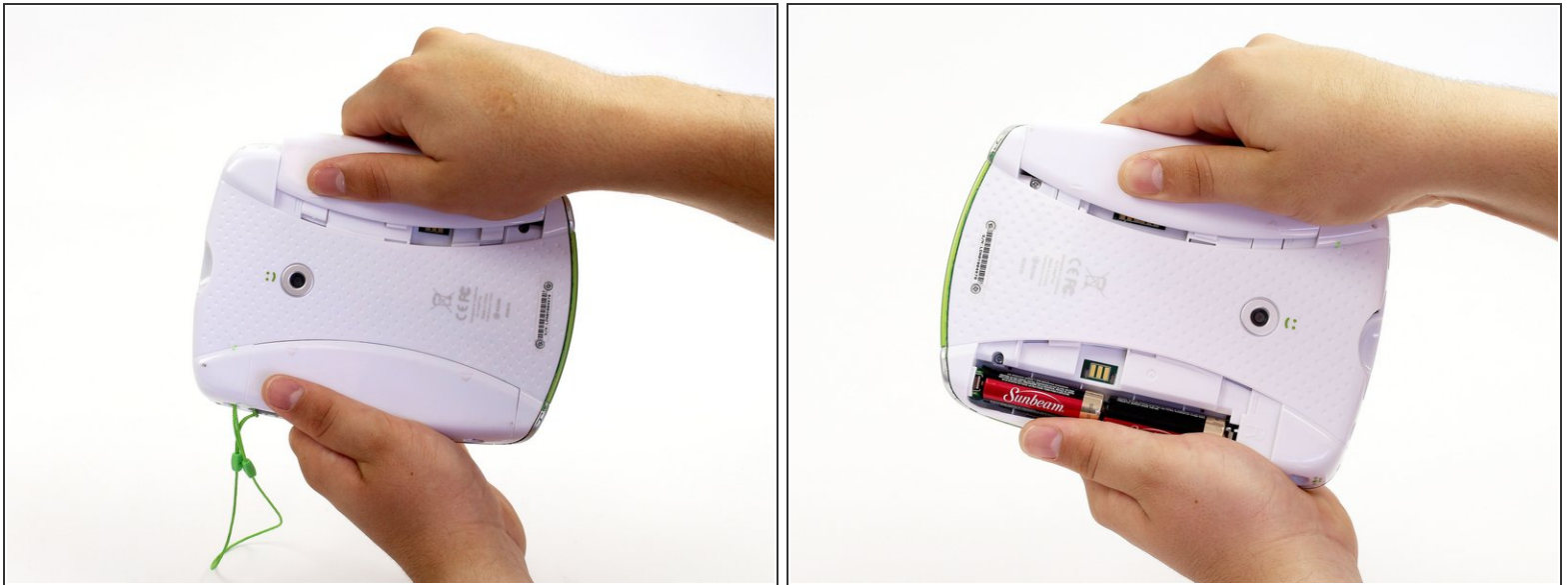
Are your selfies not showing up? Replace your front camera to see how beautiful you are.

This guide will require soldering equipment and skill.

TOOLS:

- [Phillips #00 Screwdriver](#) (1)
 - [iFixit Opening Tools](#) (1)
 - [Safety Glasses](#) (1)
 - [Soldering Workstation](#) (1)
-

Step 1 — Battery



- Before disassembling your LeapPad, ensure your device is shut off.
- Push outward on the plastic side panels to remove and reveal battery.
- The panels should detach fully from the main device.


Step 2



- Push down from the positive end of the battery towards the negative end to pry the battery up out of its dispenser.
- Remove all four AA alkaline batteries from the device.

Step 3 — Back Cover




 This step will void your device warranty.

- Remove the following screws securing the back cover to the main device:
 - Two 10.0 mm Phillips screws
 - Four 4.0 mm Phillips screws
 - Three 3.0 mm Phillips screws

Step 4



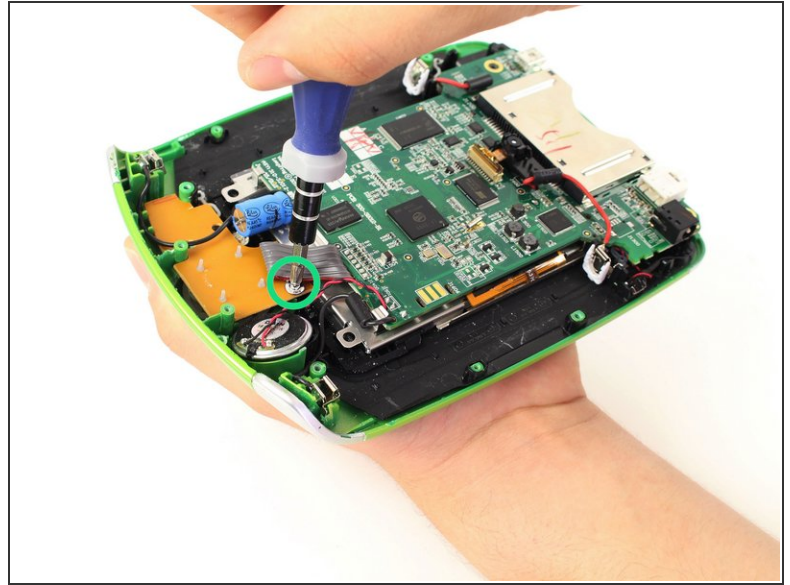
- Insert a plastic opening tool into the seam between the front and rear covers to detach the back cover from the rest of the device.
 - Move the plastic opening tool around the perimeter of the LeapPad2.
 - Lift up and remove the rear case from the tablet.
-  A butter knife can help when prying the device.

Step 5 — Front Cover



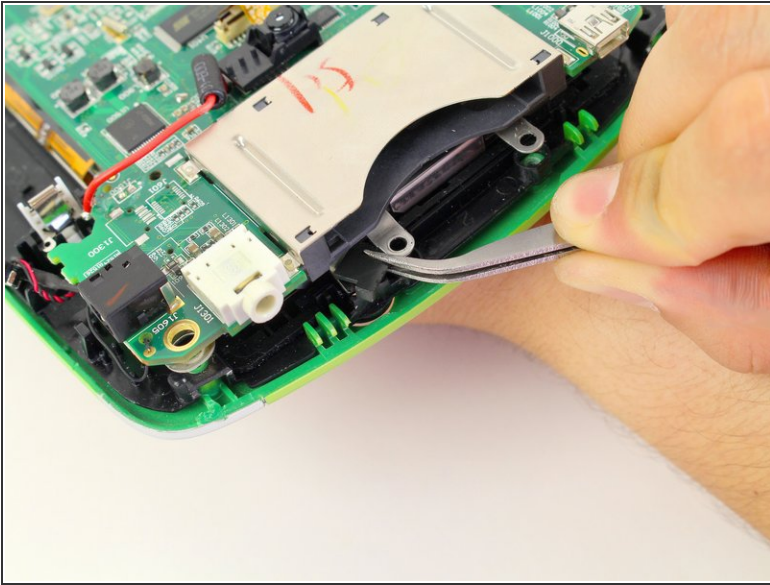
- Remove the following screws securing the front cover to the main device:
 - Three 6.0 mm Phillips screws
 - Three 7.0 mm Phillips screws
 - Two 10.0 mm Phillips screws
 - Three 7.0 mm Phillips screws (bulkier screw head than other 7.0 mm Phillips screws)
- ⓘ The white plastic component holding the speaker must be removed to reach the third 7.0 mm Phillips screw. Refer to Step 2.

Step 6



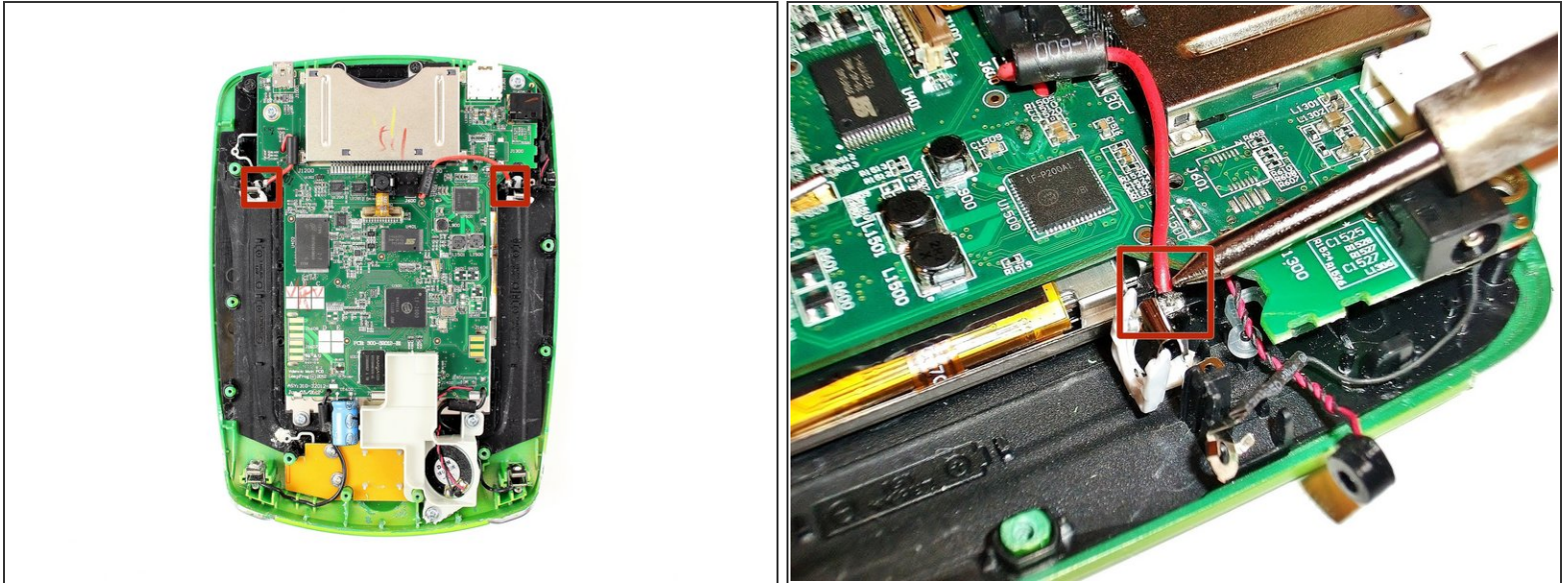
- Unscrew the white plastic piece to expose the third 7.0 mm Phillips screw mentioned.

Step 7



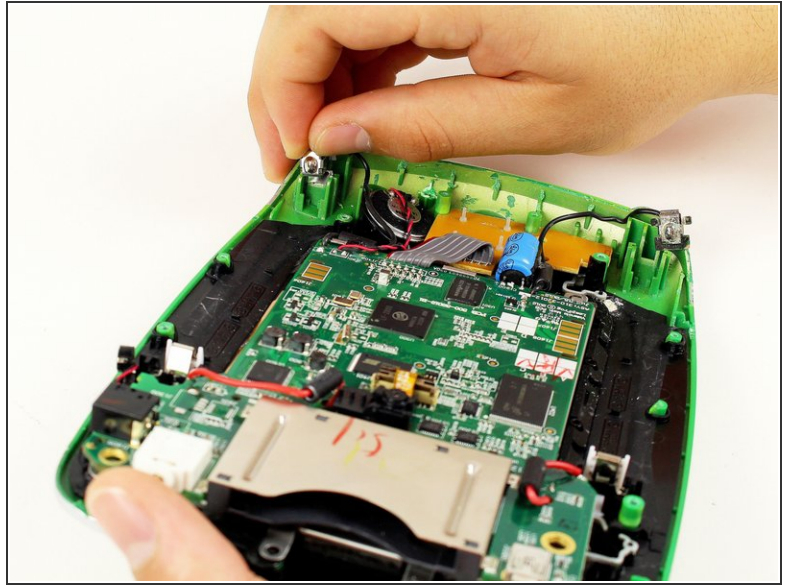
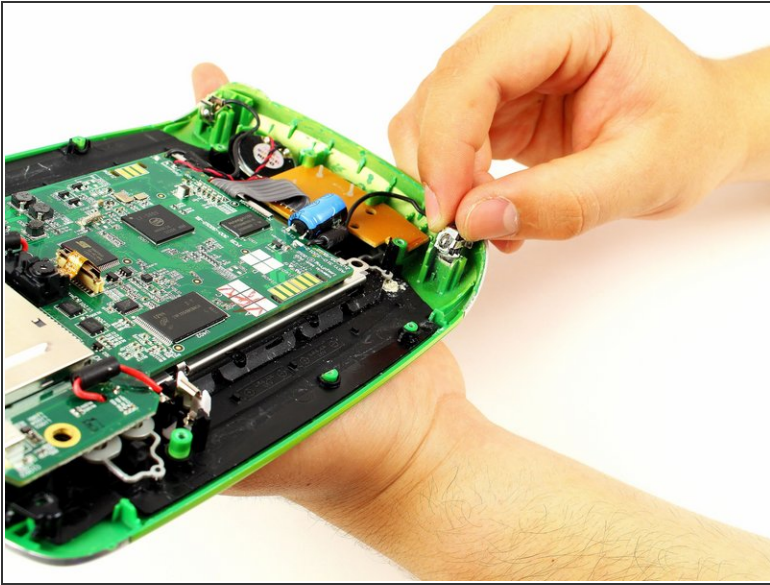
- When unscrewing the game cartridge screws, you will find a loose black plastic component underneath the game cartridge.
- Use tweezers to remove the piece.
- ☑ In case the piece falls out unexpectedly, refer to this step to make sure you put this piece back in place during the reassembly of your device.

Step 8



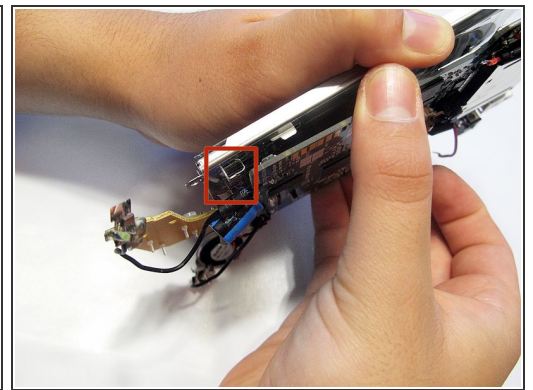
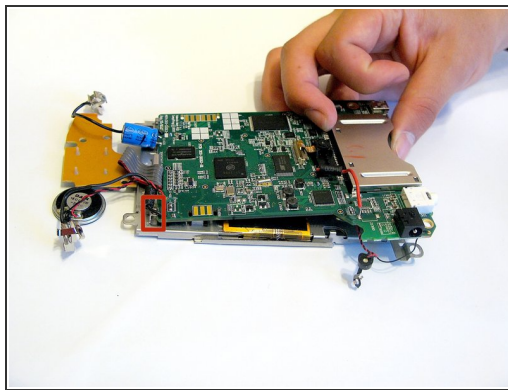
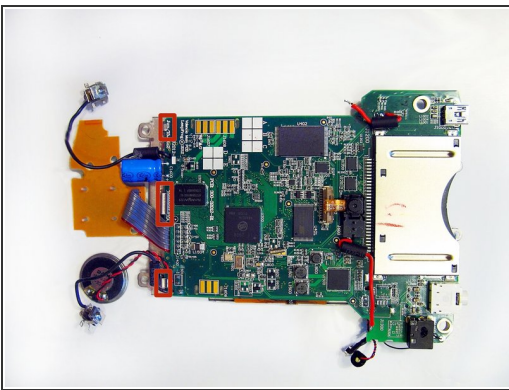
- Desolder the through hole-components in power plugs on both sides of the device where the batteries were once connected.
- ⓘ Do not refer to the pictures in this step for correct soldering and de-soldering techniques. They are solely for illustration purposes.
- ⓘ For proper soldering and desoldering techniques reference [How To Solder and Desolder Connections](#).
- ⚠ Soldering requires the iron to be at hot temperatures and can cause burns. Wear safety glasses as needed.
- ⚠ Be extremely careful with the cables in this step as they could melt, burn, or break.

Step 9



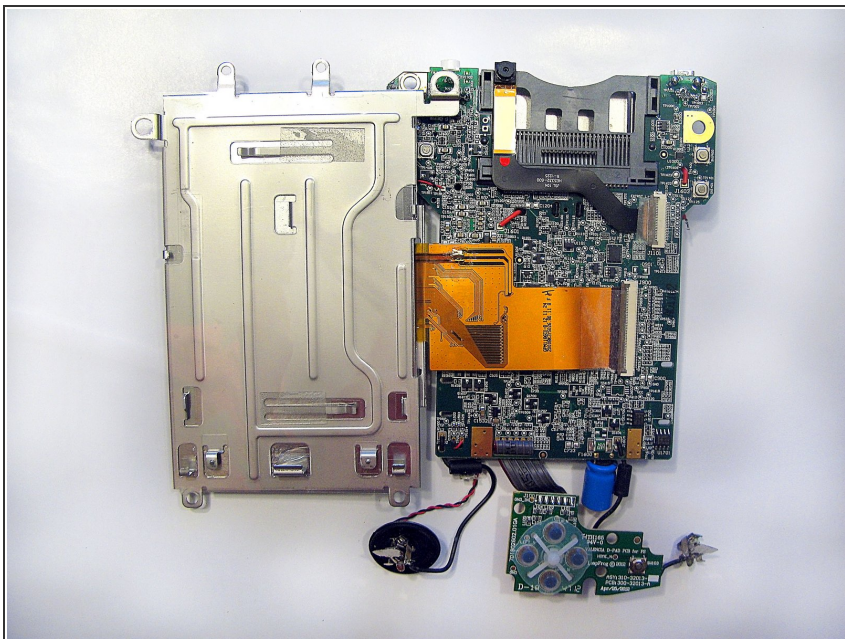
- Pry the power cables from the device using your fingers or tweezers.
- Now you should be able to lift up the front cover, leaving you with the motherboard and screen.

Step 10 — Front Camera



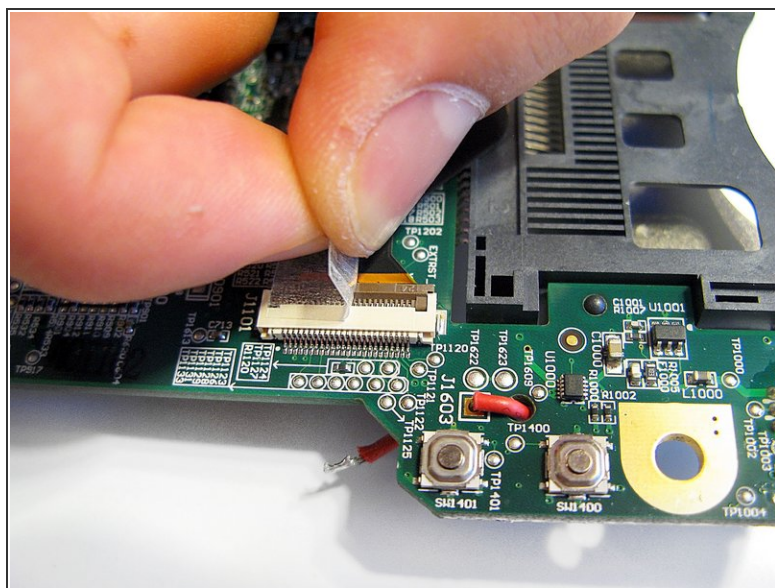
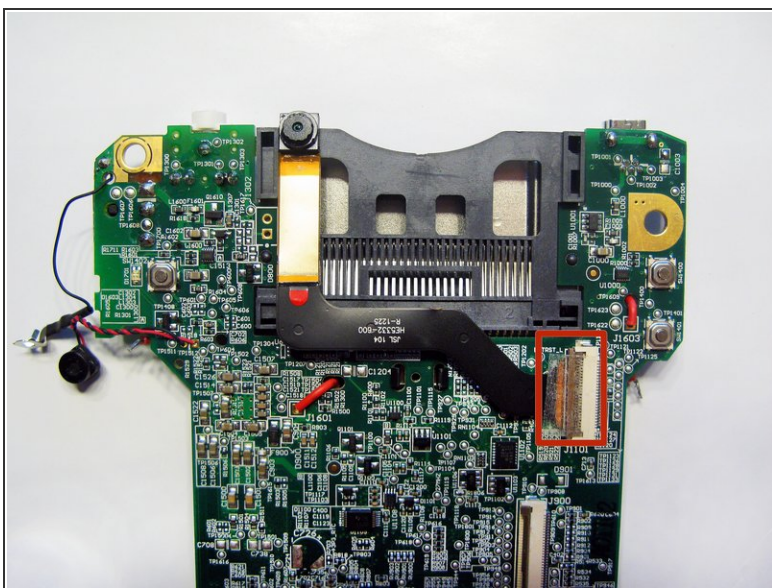
- Lift the screen from the motherboard by pulling the board out from the three metal tabs.
- ⚠ Do not be too aggressive when separating the components, as the parts are still connected.

Step 11



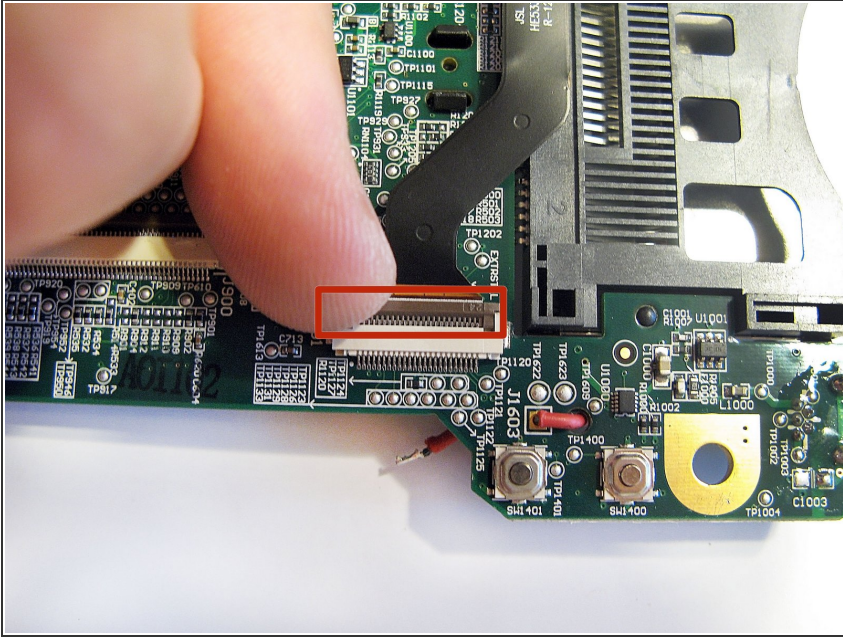
- Separate the screen from the motherboard and lay the device's components flat open like a book.
- ⚠ Do not be too aggressive when separating the components, as the parts are still connected.


Step 12



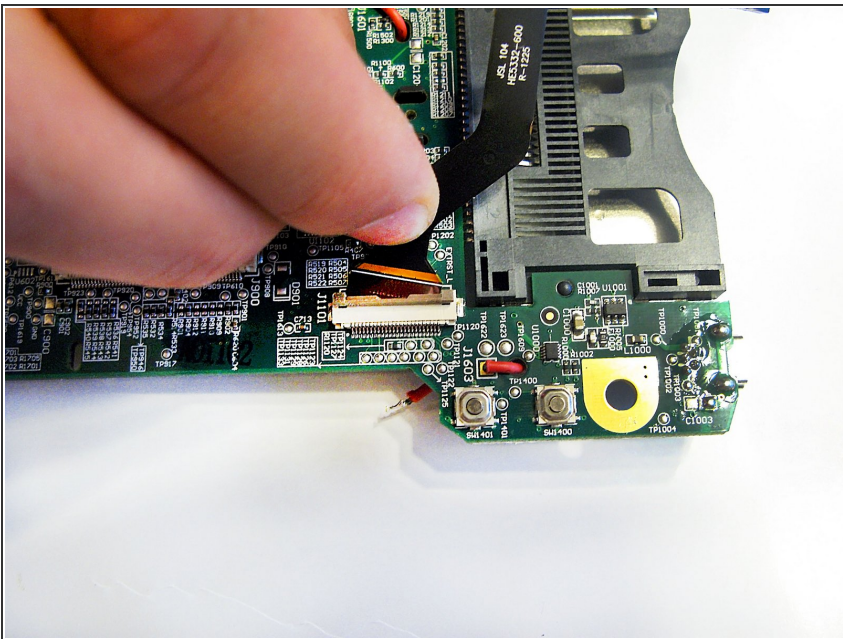
- Peel off tape covering the camera's connection ribbon to the circuit.

Step 13



- To safely remove the ribbon cable, you must first pull up the retaining flap.
-  Failing to do this step could result in damage to the cable and/or connector.

Step 14



- Gently pull outward, to remove the ribbon from the socket on the circuit board.
- ❗ If the flap is up as shown in the picture, no force should be required to remove the ribbon cable.

To reassemble your device, follow these instructions in reverse order.