



LeapFrog LeapTV Battery Replacement

Follow this guide to replace your battery in your LeapFrog Leap TV.

Written By: Matt Mote



INTRODUCTION

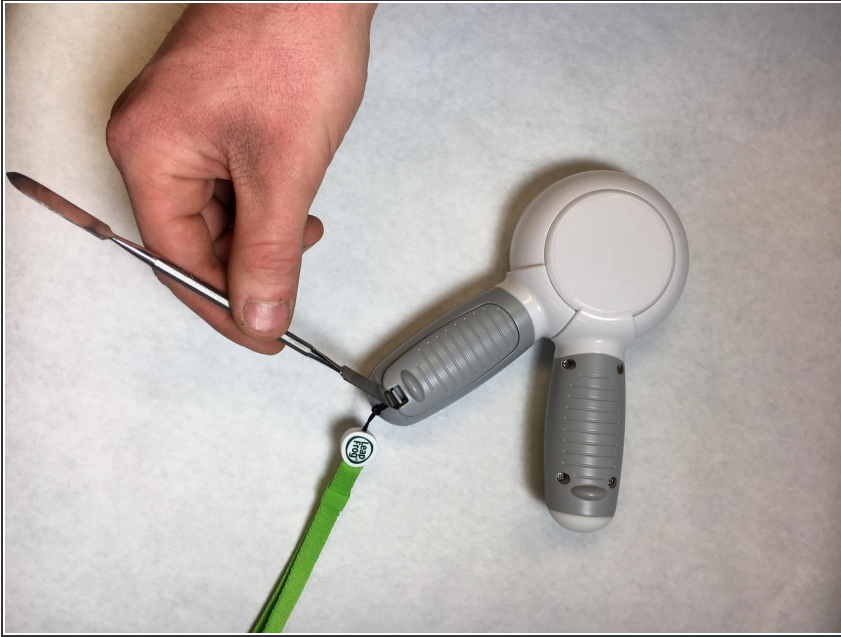
This guide will show you how to replace the controller batteries.



TOOLS:

- [Metal Spudger](#) (1)
-

Step 1 — Battery



- Use the Metal Spudger to push the release clip on the battery cover.

Step 2



- Lift the cover off.

Step 3



- The battery holder is now visible with the removal of the cover.

To reassemble your device, follow these instructions in reverse order.