



LeapFrog LeapTV Controller Button Replacement

This guide will provide you with the necessary knowledge to replace the "A" and "B" buttons on the LeapFrog LeapTV controller.

Written By: Triston Fischer



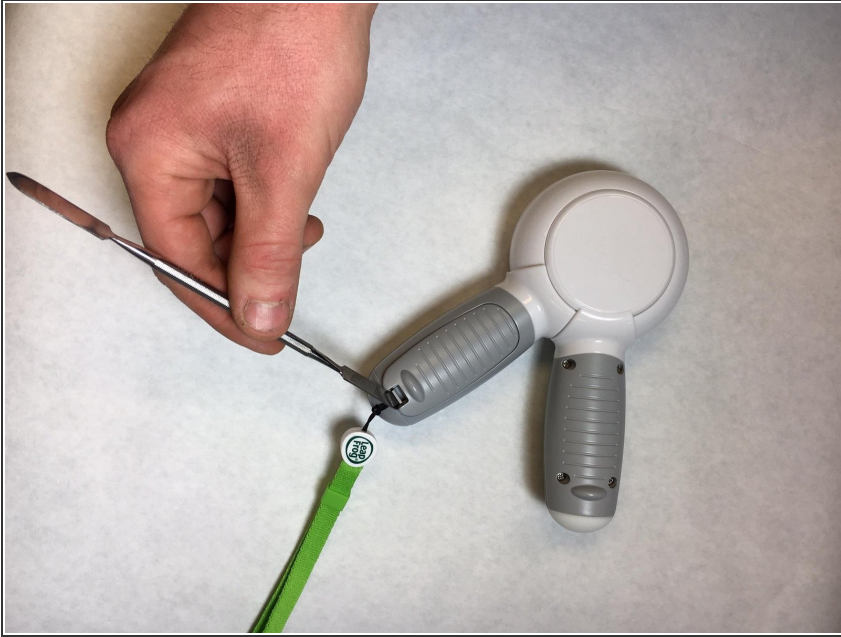
INTRODUCTION

This guide will show you how to replace the "A" and "B" buttons on the controller.

TOOLS:

- [Metal Spudger](#) (1)
 - [Phillips Head Screwdriver: Size PH1](#) (1)
-

Step 1 — Battery



- Use the Metal Spudger to push the release clip on the battery cover.

Step 2



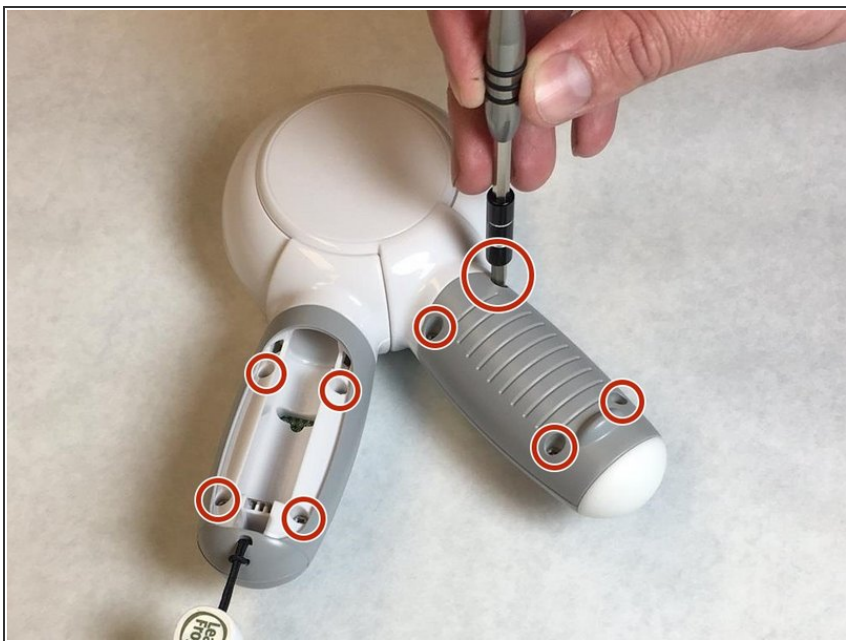
- Lift the cover off.

Step 3



- The battery holder is now visible with the removal of the cover.

Step 4 — Buttons



- Use the screwdriver to remove the eight 8.7mm PH1 Phillips head screws.

Step 5



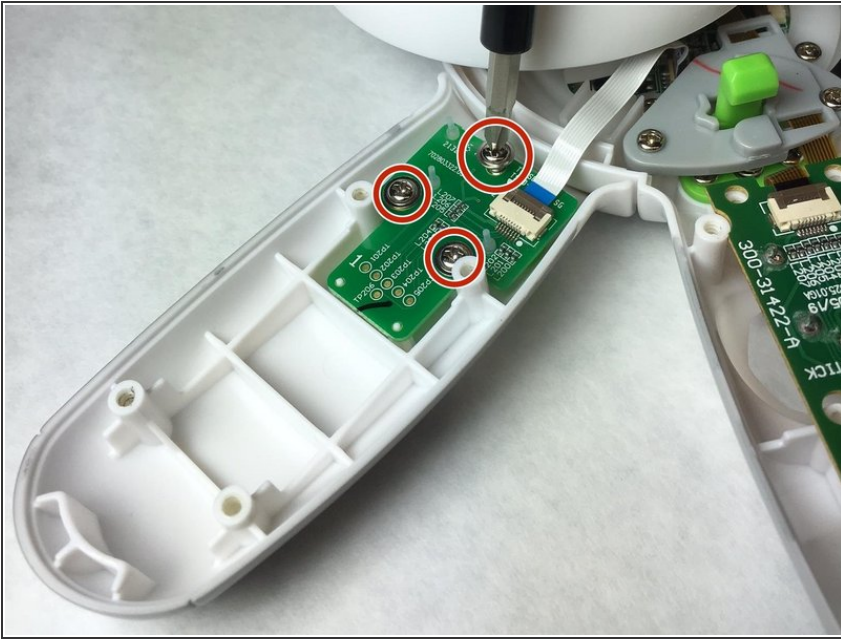
- Slightly lift up on the back cover until the handle covers are free to rotate.

Step 6



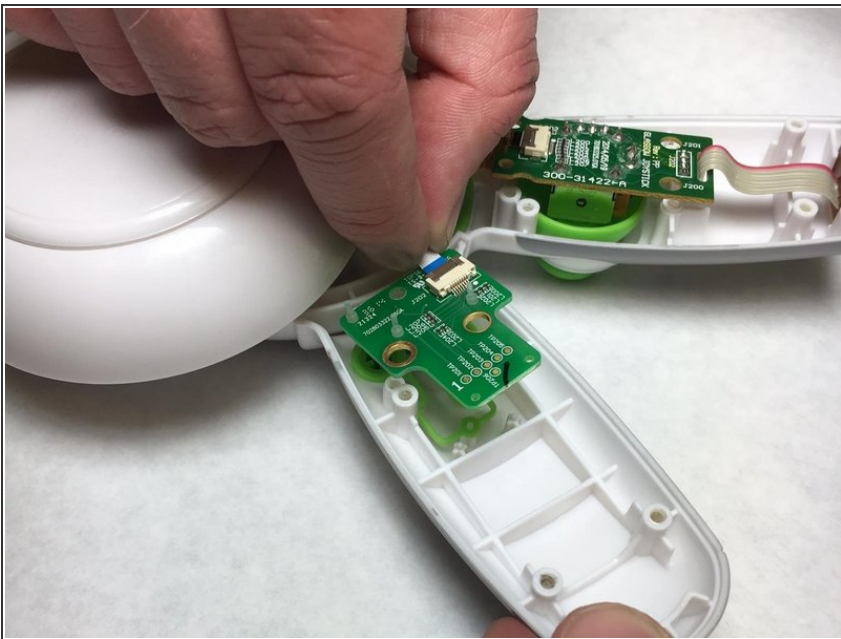
- Slide the the side of the handle facing you to the left to reveal the "A" and "B" button circuit board.

Step 7



- Use the screwdriver to remove the three 8.5mm PH1 Phillips head screws.

Step 8



- Lift up on the circuit board and move it to the side.
- ⓘ Be careful to not cause excess stress to the connecting wires when handling the circuit board. Excess stress can cause solder points to break.

Step 9



- Use the plastic opening tool to release the buttons from the controller casing.

Step 10



- Remove the "A" and "B" buttons by pulling up on one of the buttons.

Step 11



- Buttons are now removed.

To reassemble your device, follow these instructions in reverse order.