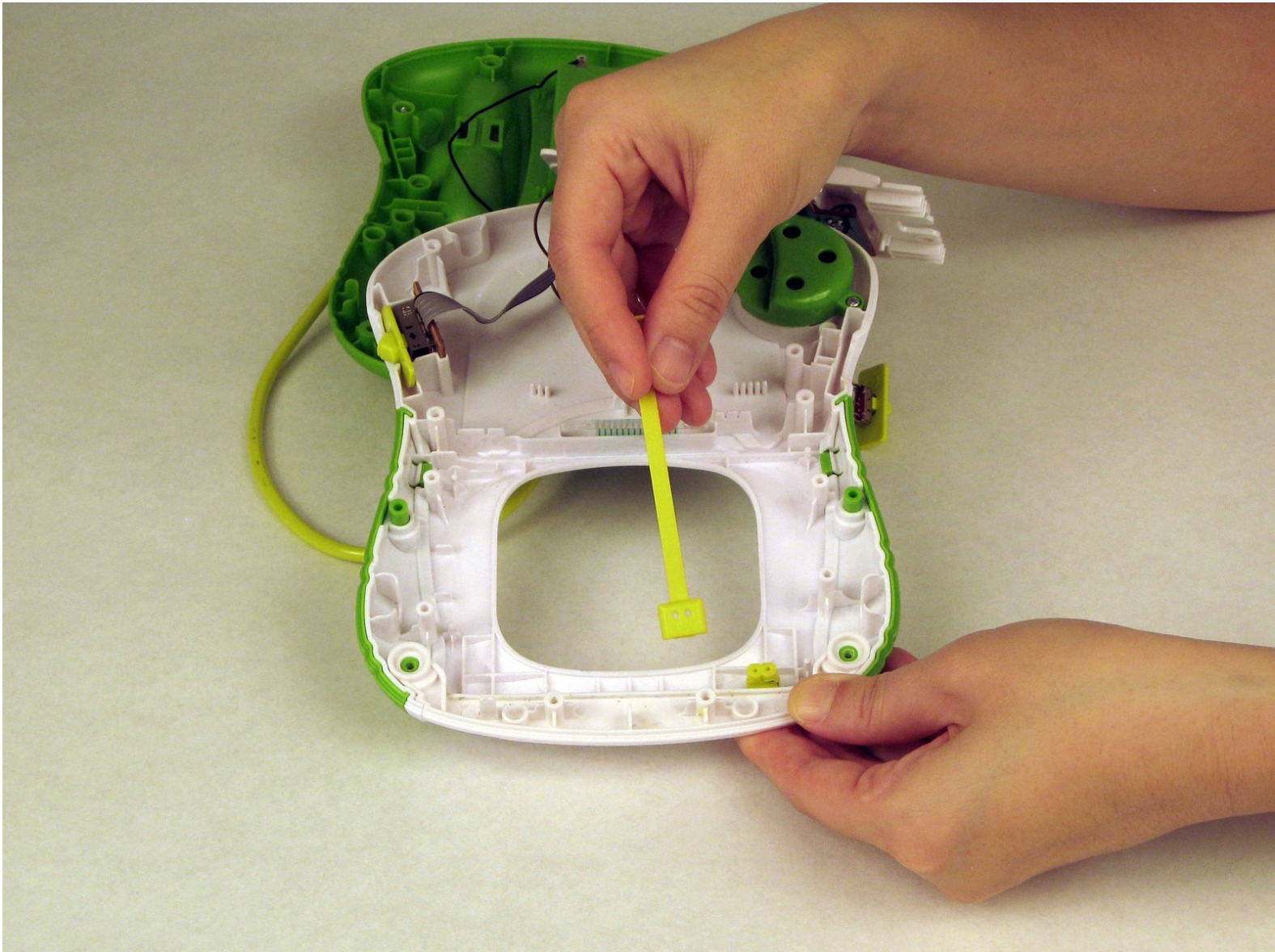




# LeapFrog Scribble and Write Eraser Slider Replacement

This guide will show you how to find the eraser slider and replace it.

Written By: Shang



---

## INTRODUCTION

Your toy's screen isn't being cleared by the sliding motion of the eraser. There could be some type of debris preventing it's motion or the sensor may be faulty.

---



### TOOLS:

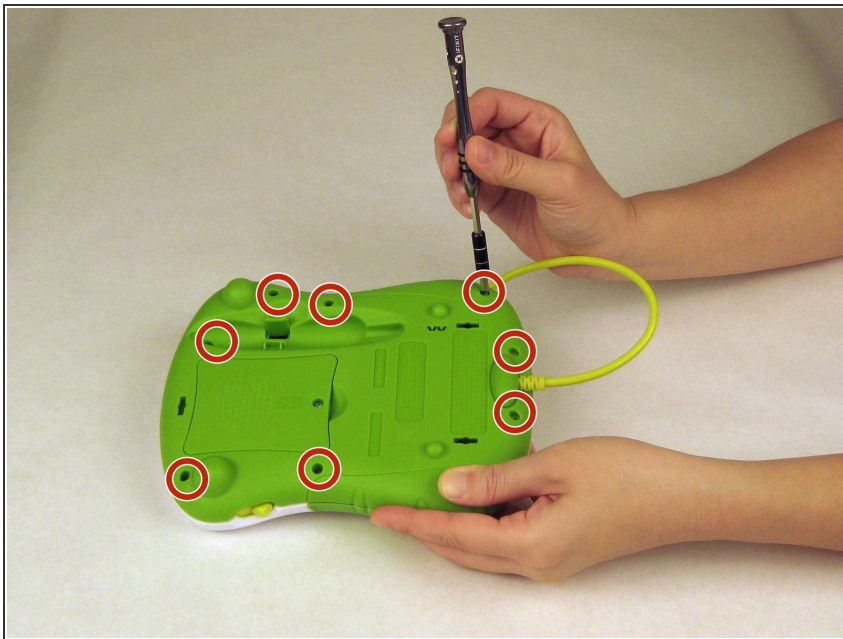
- [Phillips #0 Screwdriver](#) (1)
-

## Step 1 — Eraser Slider



- Turn the toy over so the back is facing upward.

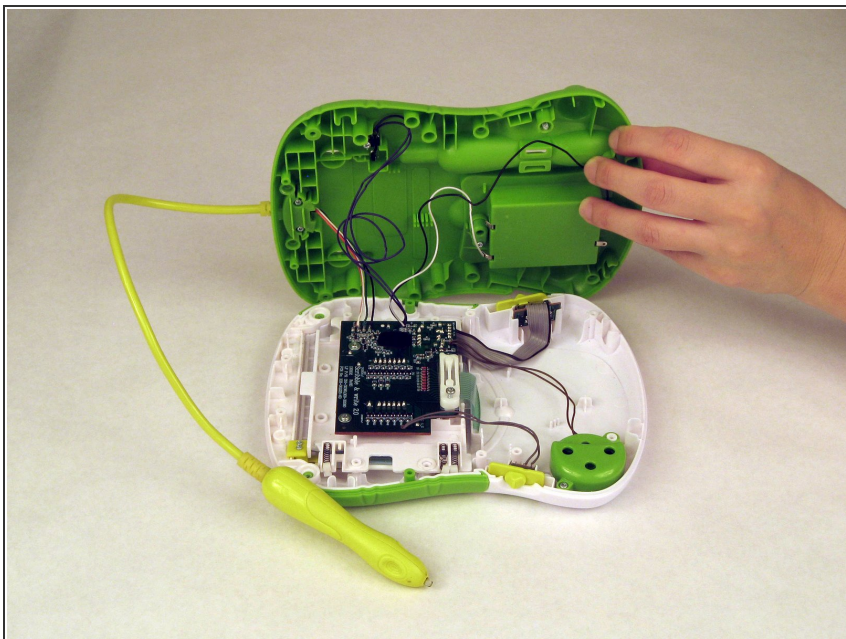
## Step 2



- Using a Phillips head screwdriver, carefully unscrew all 9 screws on the back of your toy. Be careful not to misplace the screws.

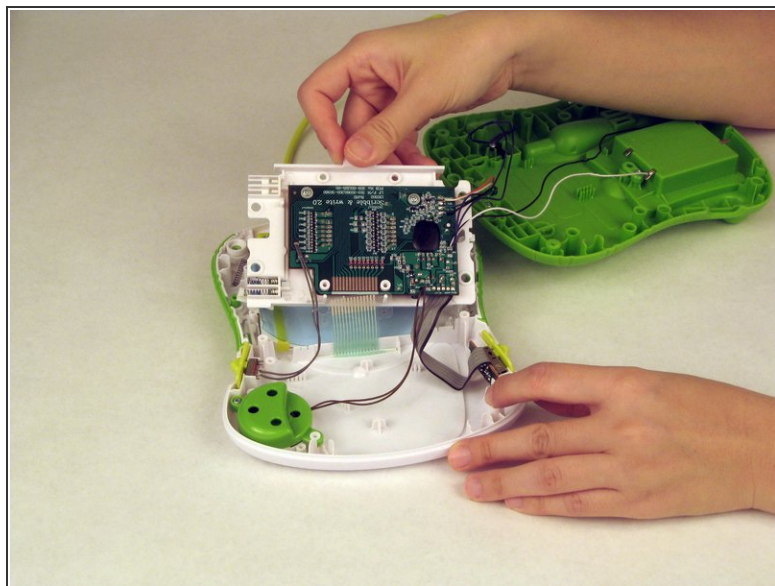
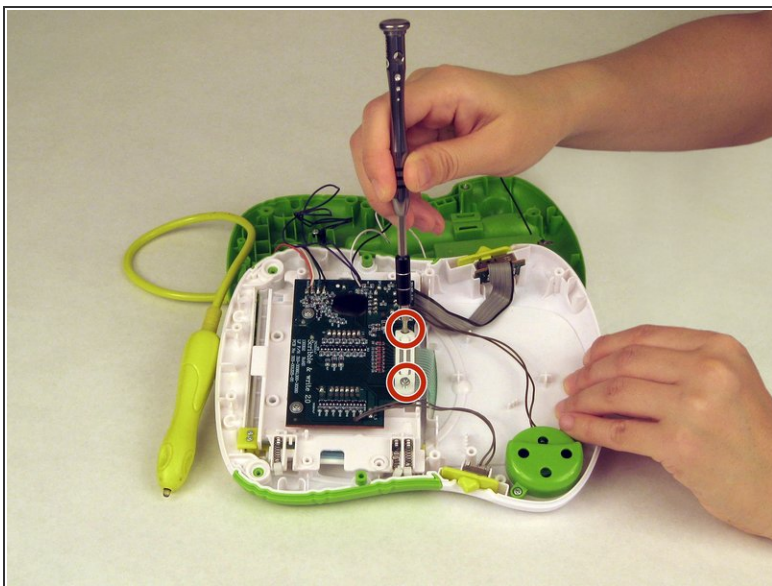


## Step 3



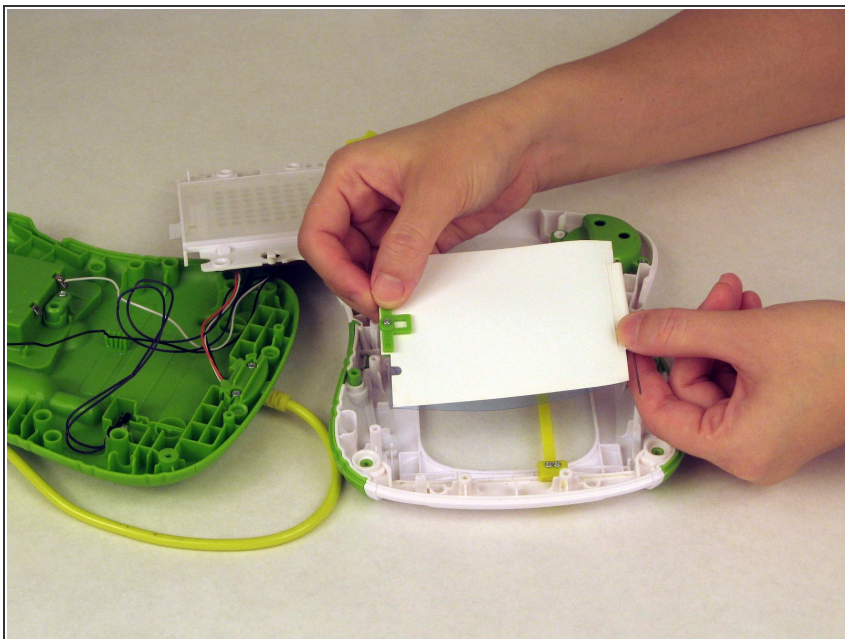
- Very carefully, remove the back of your toy.

## Step 4



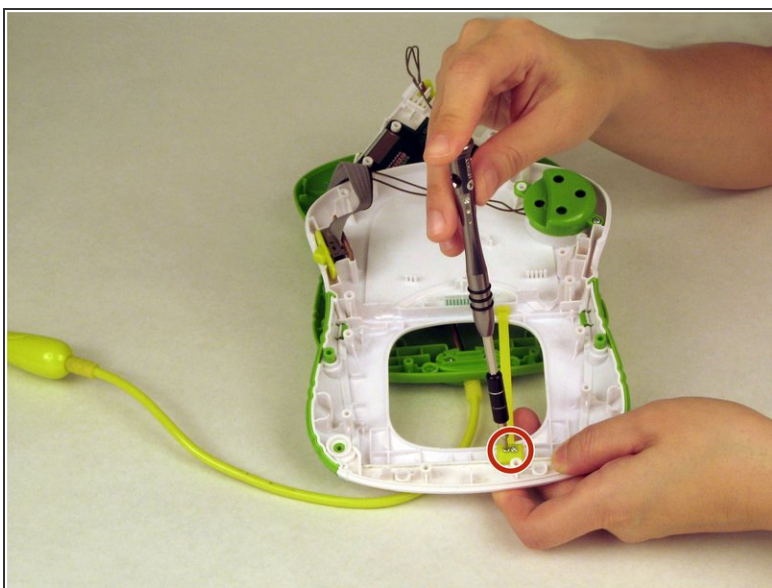
- Remove the motherboard to expose the display screen and the eraser slider by unscrewing the two screws securing the screen to the motherboard.

## Step 5



- Now, carefully remove the display screen leaving the eraser slider attached.

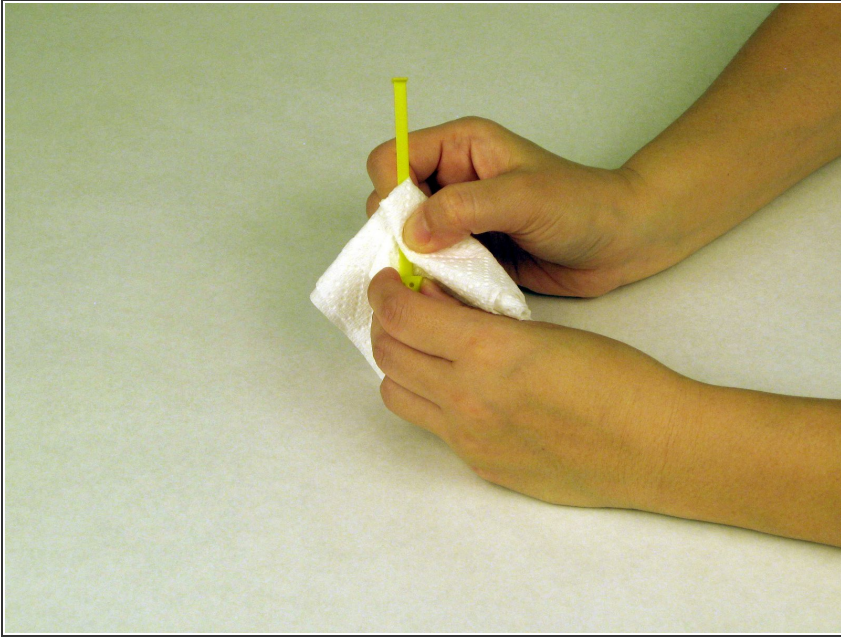
## Step 6



- Use a Phillips head screwdriver to remove the eraser slider.



## Step 7



- Lastly, use a soft towel to clean the eraser slider.

To reassemble your device, follow these instructions in reverse order.