



LeapPad Ultra Battery Replacement

This is a replacement guide for a faulty or dead battery.

Written By: Ryan Arredondo



INTRODUCTION

The purpose of this guide is to replace the LeapPad's battery. The battery is essential to receiving any form of functionality from the device. Without a working battery the device is powerless. Once the replacement is finished, be sure to properly dispose of the old battery at appropriate locations such as a batter recycling center.



TOOLS:

- [Phillips #1 Screwdriver](#) (1)
- [iFixit Opening Tools](#) (1)
- [Spudger](#) (1)



PARTS:

- [Battery Leapfrog LeapPad Ultra 33200](#) (1)

Step 1 — Battery



- Remove the barcode covering the two screws on the lower back of the Leap Pad.

Step 2



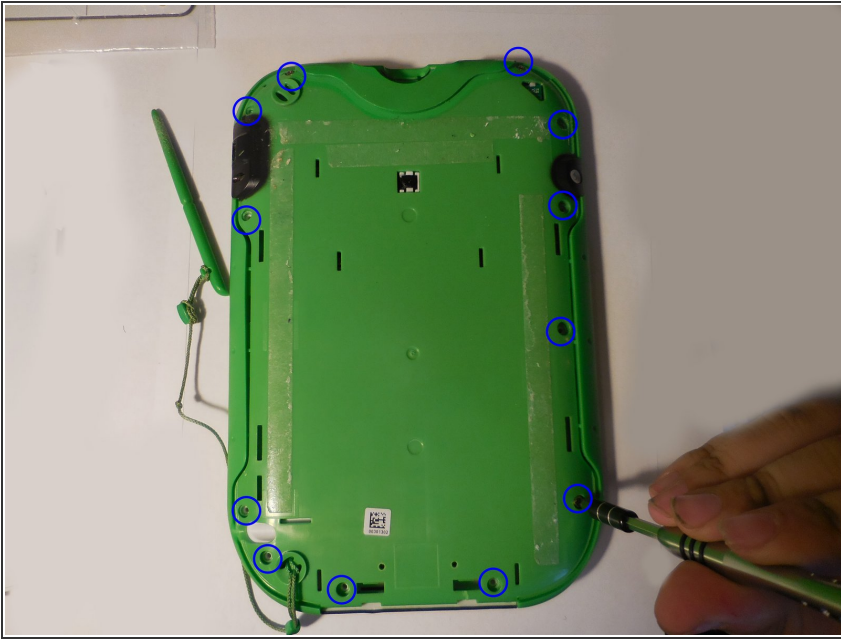
- Remove the two 5 mm screws that were covered by the sticker.

Step 3



- Using a plastic opening tool, pry off the outer protective child proof casing, starting from the bottom.

Step 4



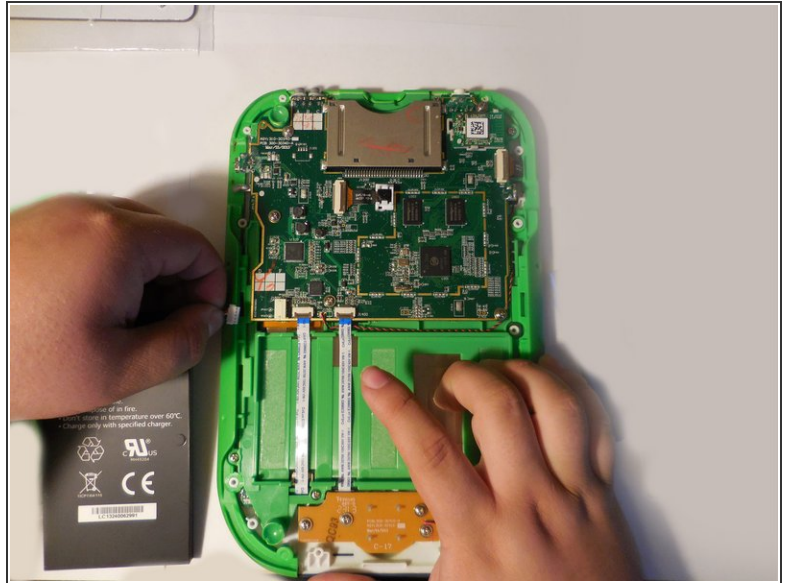
- Remove the 7 mm screw to the right of the cartridge dock, two 8 mm screws in the top left, and the nine 8 mm screws holding the the green shell.

Step 5



- Remove the hard plastic casing, exposing the motherboard and battery.

Step 6



- The battery will be glued down, so use the flat end of the spudger to pry out the battery pack. Then using your fingers, grab the wire at the connection point and unplug the battery connector. Replace the battery with a new one.

To reassemble the device, follow these instructions in reverse order.