



# Lego Dimensions Starter Pack USB Cable Replacement

Replace the USB cable from your toy pad, which connects to the video game console.

Written By: Alyssa Lach



---

## INTRODUCTION

The USB cable is what connects the toy pad to the video game console, allowing you to play the game. This guide shows how to remove the USB cable from the toy pad.

---

### TOOLS:

- [Metal Spudger](#) (1)
-

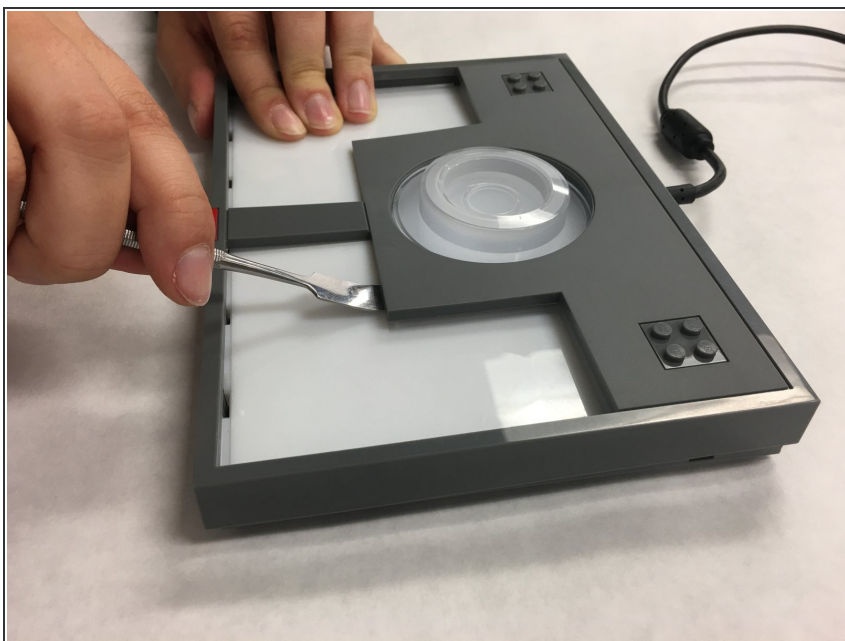
## Step 1 — Top Cover Parts



⚠ Be careful not to crack the cover.

- Use the metal spudger to gently pry open the corners of the top cover.

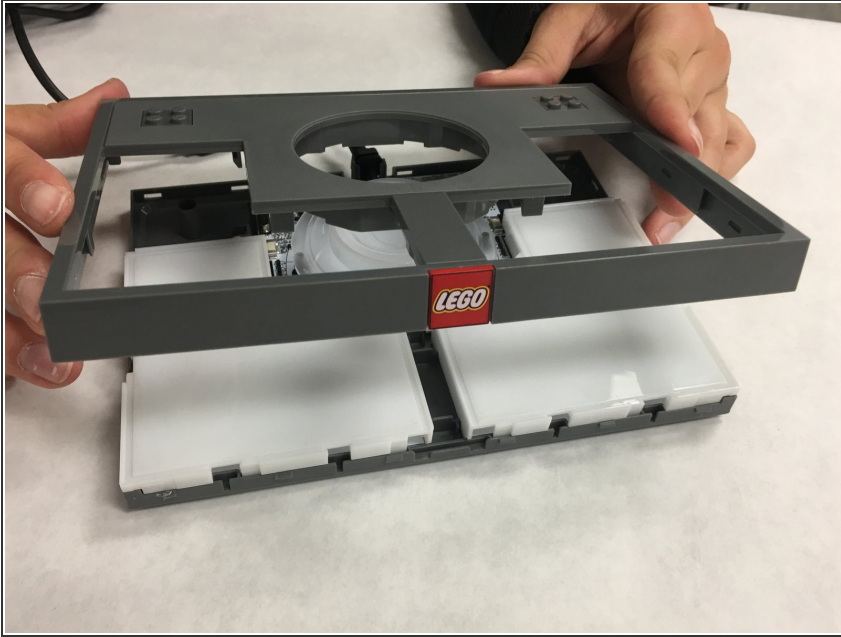
## Step 2



⚠ Be careful not to crack the top cover.

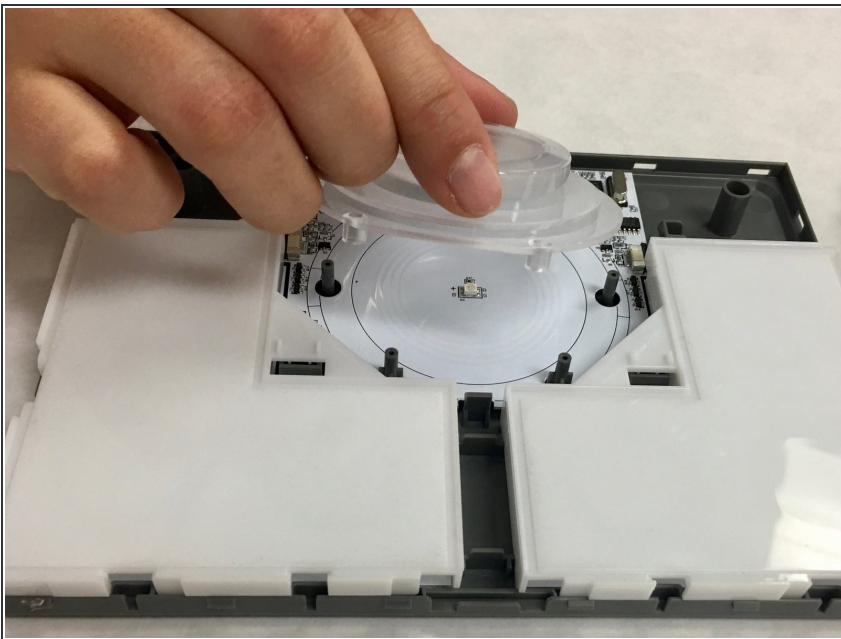
- Use the metal spudger to gently pry up the center of the top cover.

### Step 3



- Pull the top cover off.

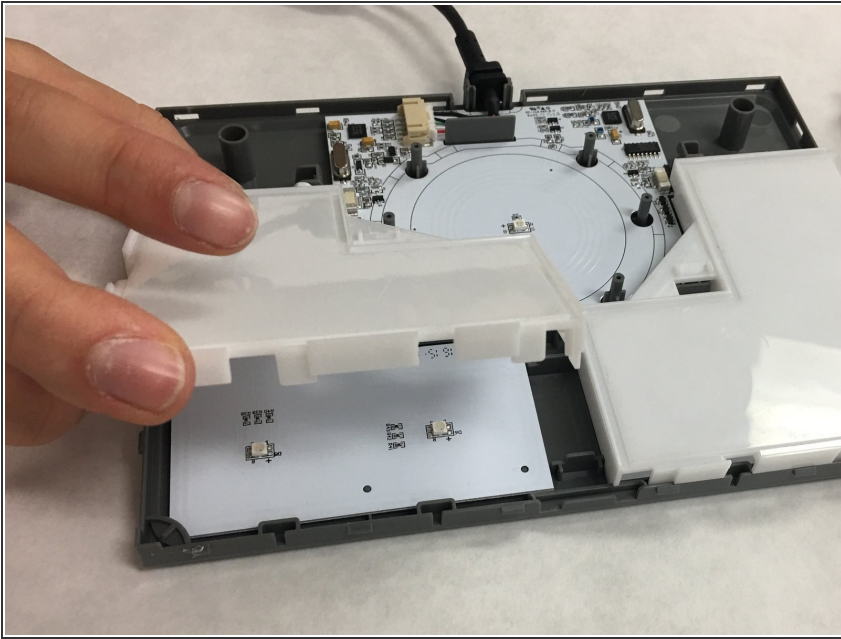
### Step 4



- Lift up the circular illumination stand and remove it from the toy pad.

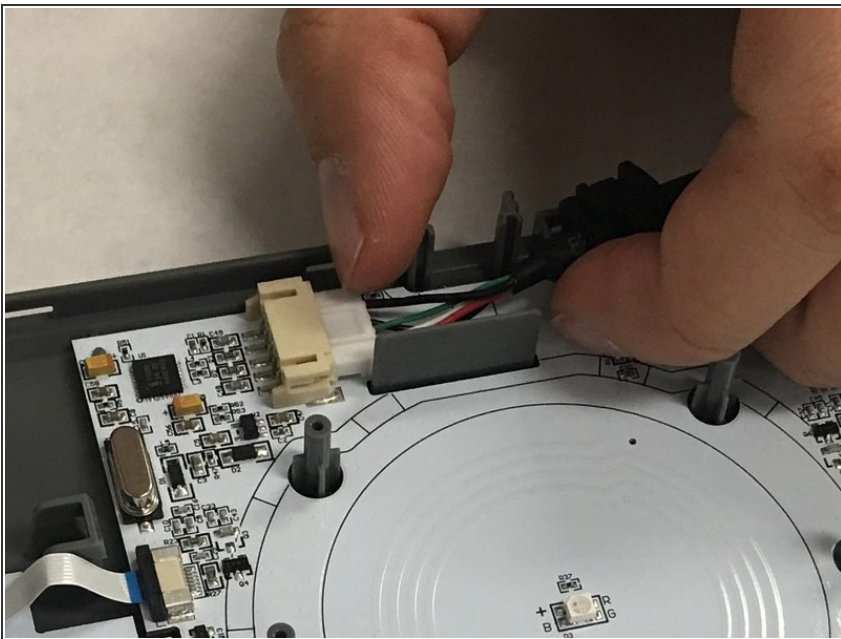


## Step 5



- Lift up the white L-shaped pieces and remove them from the toy pad.

## Step 6 — USB Cable



- Pull the white connector away from the motherboard, keeping the white connector parallel to the board.
- ⓘ You may need to use a plastic opening tool or spudger to help separate the connector. Avoid pulling firmly on the wires themselves.
- Remove the USB cable from the toy pad.

To reassemble your device, follow these instructions in reverse order.