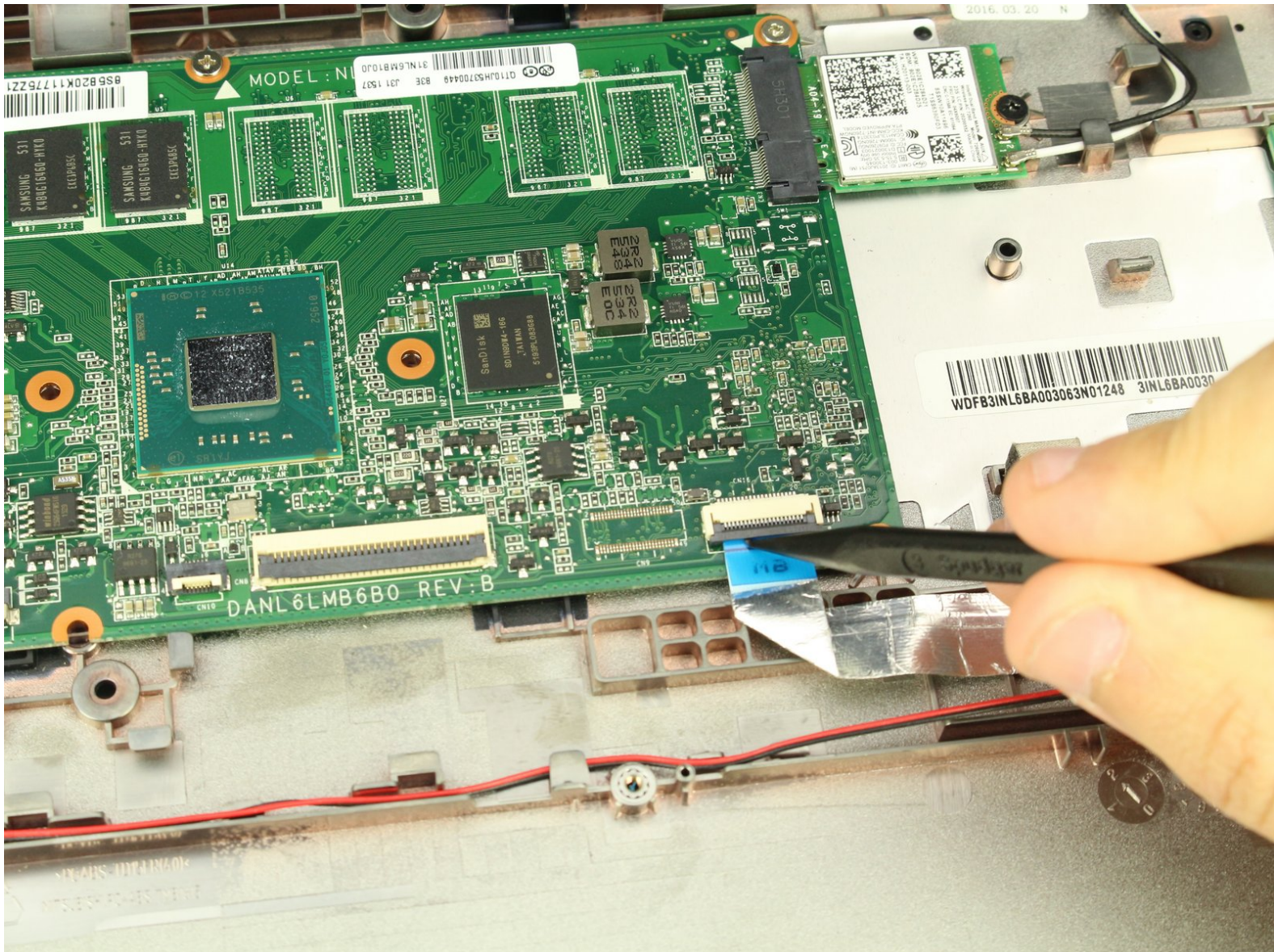




Lenovo 100s Chromebook-11IBY Motherboard Replacement

This guide will help you replace your Lenovo 100s Chromebook-11IBY motherboard.

Written By: Sarah Westberg



INTRODUCTION

This guide will show you how to replace your motherboard in your Lenovo 100s Chromebook-11IBY. Use this guide if your Lenovo 100s Chromebook-11IBY motherboard breaks down. Symptoms of a faulty motherboard include the device not turning on and frequent crashes.



TOOLS:

- [Phillips #0 Screwdriver](#) (1)
 - [iFixit Opening Tools](#) (1)
 - [Spudger](#) (1)
-

Step 1 — Battery



- Ensure your device is turned off and unplugged.

Step 2



- Use a Phillips #0 screwdriver to remove the nine 6mm screws from the larger back plate.

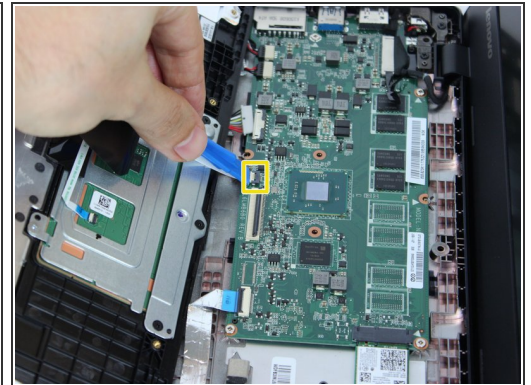
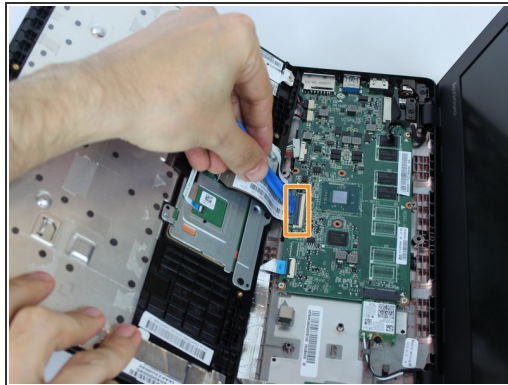
Step 3



- Turn your laptop back over, open it, and use the plastic opening tool on the recessed notch to gently pry each side and lift the keyboard plate up.

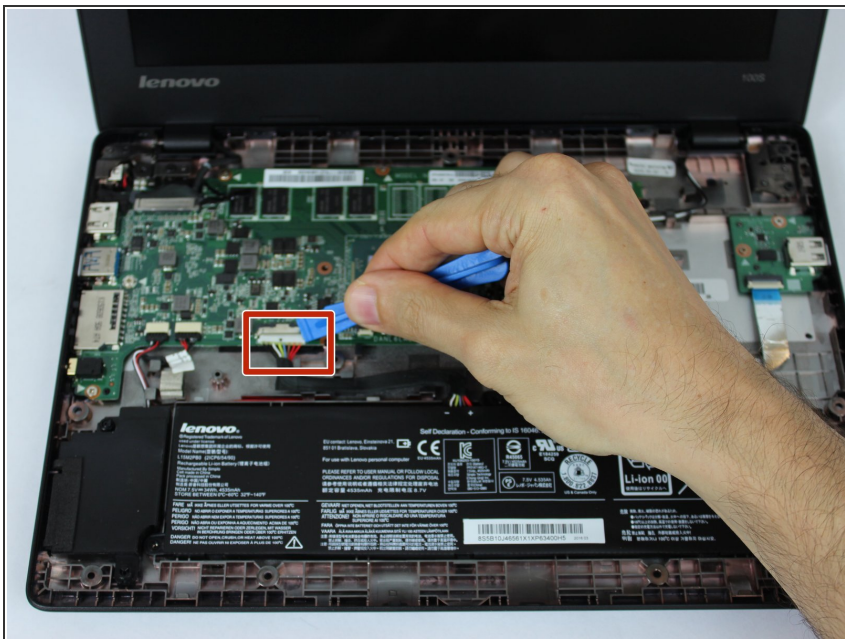
⚠ Be careful not to pull keyboard plate out immediately because cables are attached.

Step 4



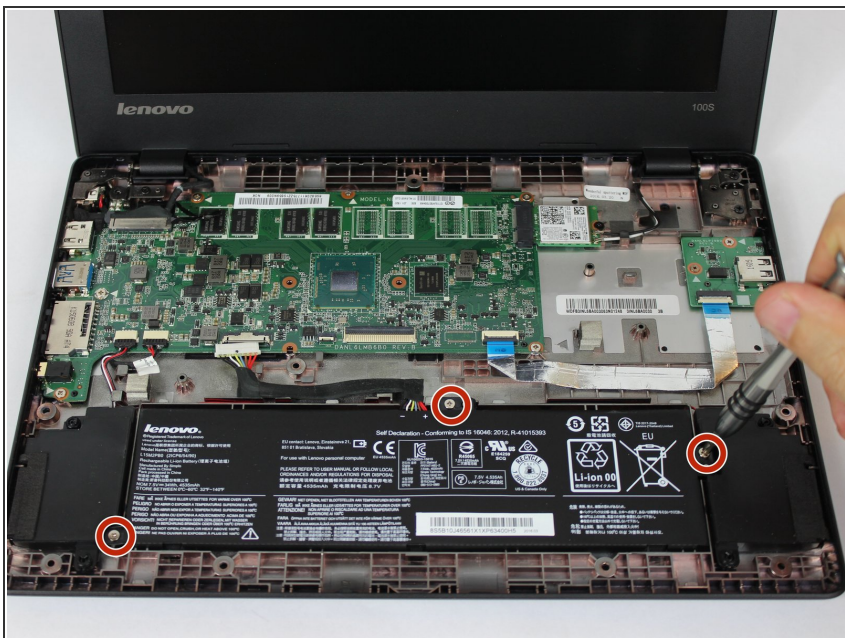
- Locate the two sticker-like connecting wires (for the keyboard and touchpad).
- Carefully unplug the orange circled (keyboard) wire from the keyboard plate.
- Carefully unplug the yellow circled (touchpad) wire from the keyboard plate.
- Then lift the keyboard plate up and place it to the side.

Step 5



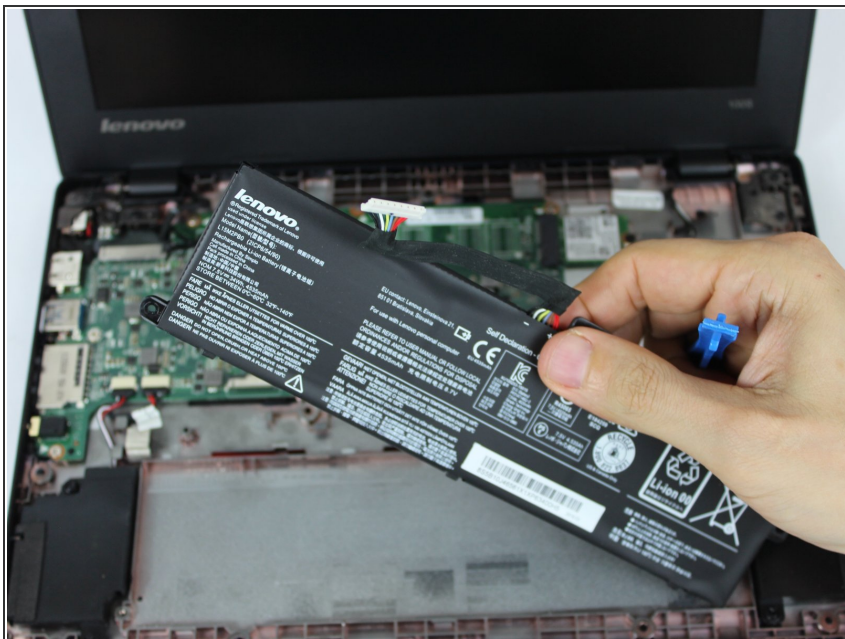
- Locate the cable attaching the battery to the motherboard and gently unplug it by hand.

Step 6



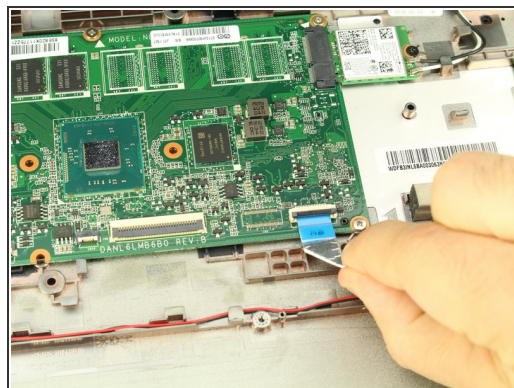
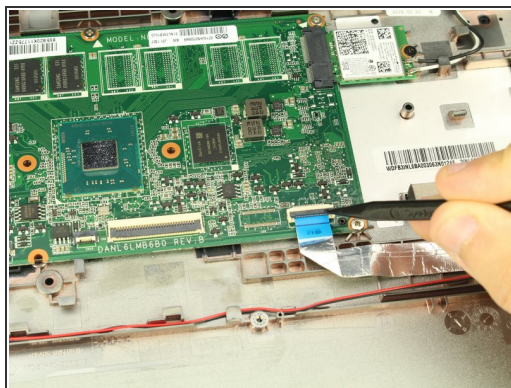
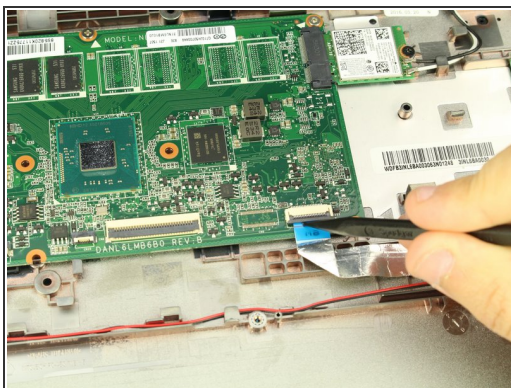
- Use the Phillips #0 screwdriver to remove the three 6mm screws from the battery.

Step 7



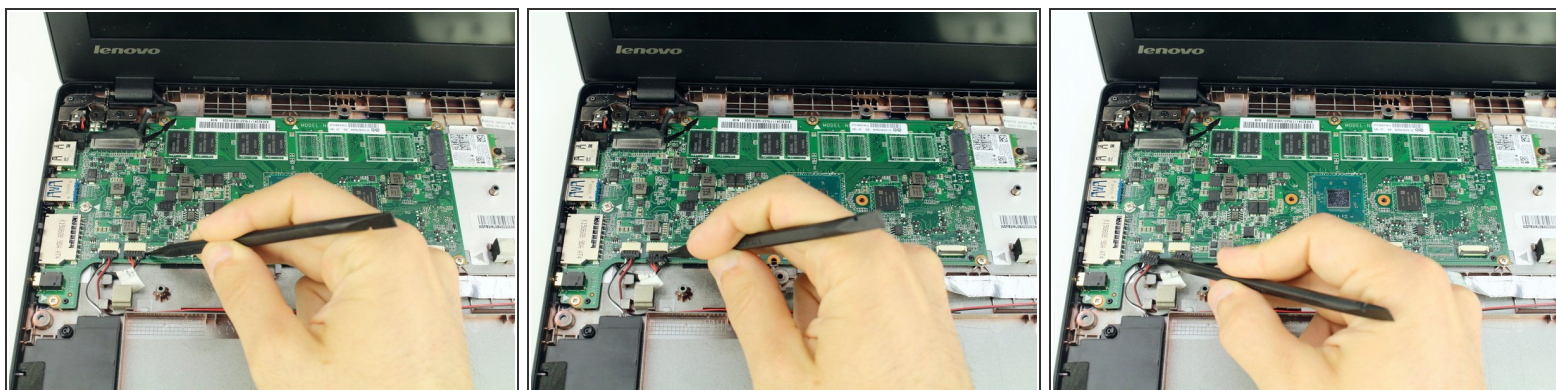
- Remove the battery.

Step 8 — Motherboard



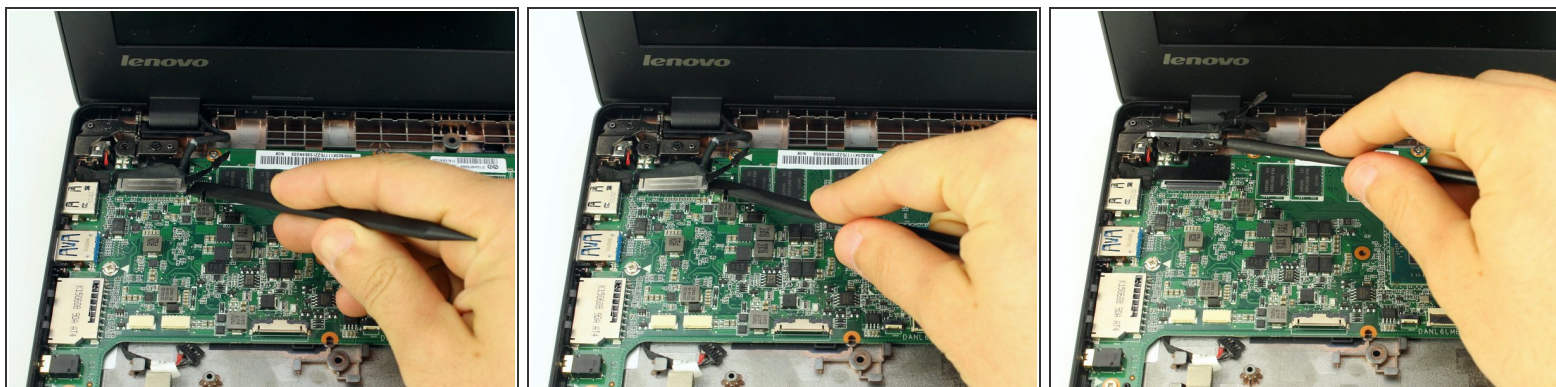
- Using the black nylon spudger, lift up the grey bar of the ZIF connector attached to the motherboard located in the bottom right corner.
- Pull out the ribbon cable connecting the motherboard to the daughterboard.

Step 9



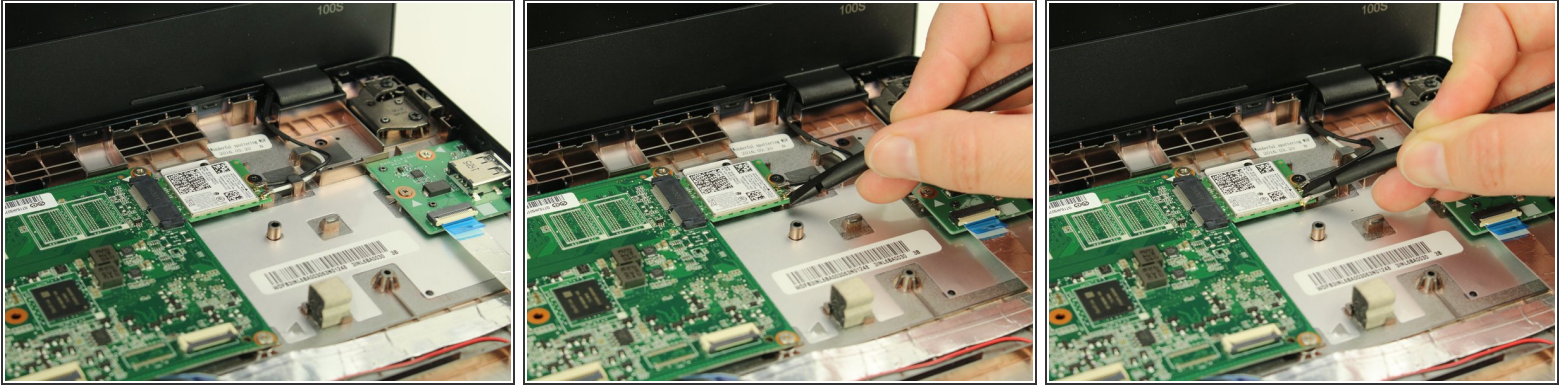
- Use the spudger to coax the sliding speaker cables toward you, out of the motherboard attachments.

Step 10



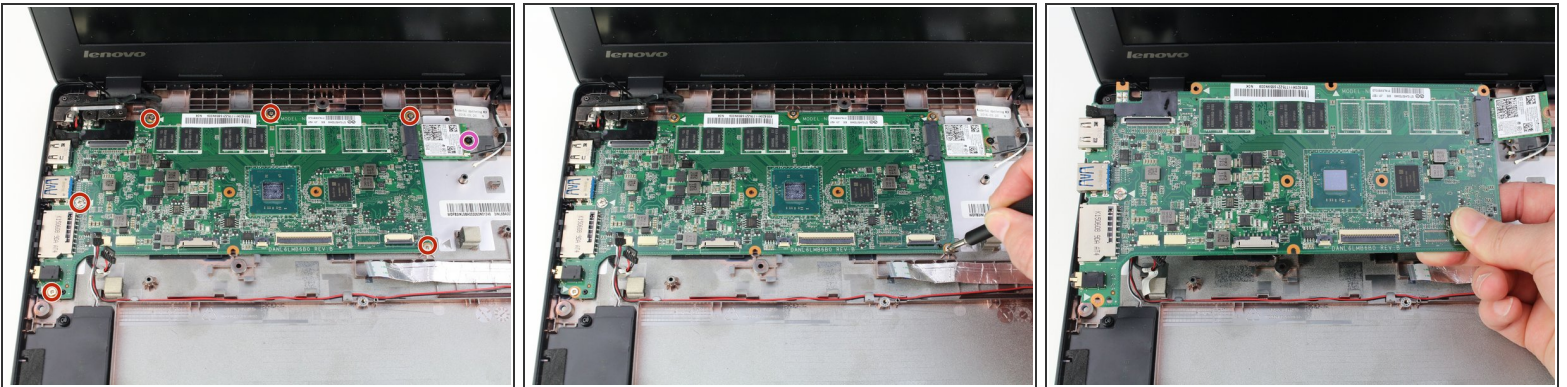
- Use the flat end of the spudger to pop up the display cable connector from the motherboard.

Step 11



- Pry up the coaxial antenna cables from the wifi card with the spudger.

Step 12



- Use your Phillips #0 screwdriver to remove six 3.7mm screws from the motherboard.
- Use the same Phillips #0 screwdriver to remove one 3.2mm screw from the wireless card.
- Wiggle the motherboard gently out from the case. It should come out towards you and slightly to the right.

To reassemble your device, follow these instructions in reverse order.