



Written By: Jay Shah



---

## INTRODUCTION

You will need a screwdriver with a PH000 head, and a prying tool.



### TOOLS:

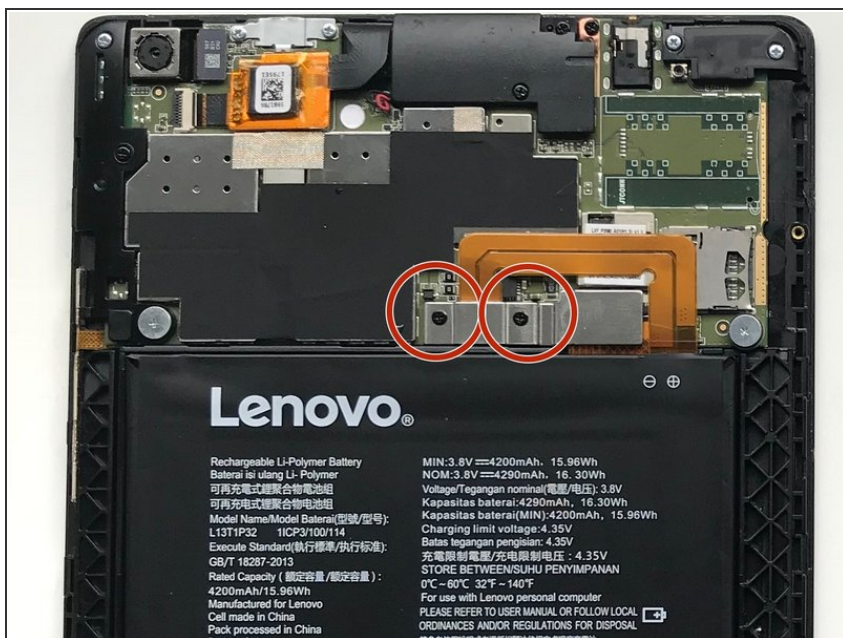
- [Prying and Opening Tool Assortment](#) (1)
  - [64 Bit Driver Kit](#) (1)
  - [Metal Spudger](#) (1)
-

## Step 1 — Battery



- Remove the back cover by prying it open with the metal spudger tool.

## Step 2



- Remove the two screws with a PH000 head screwdriver.
- ☑ Keep all your screws in one place.



## Step 3



- Remove the metal piece.

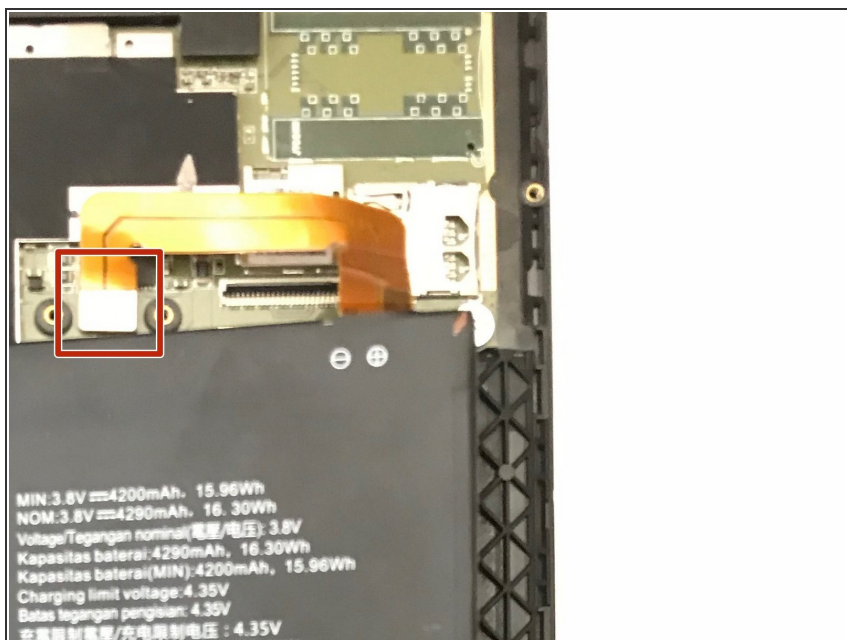
- ☑ Keep this piece safe, as you will need it to reassemble the device again.

## Step 4



- Remove the battery by lifting it up using a plastic spudger.

## Step 5



- Disconnect the cable from the connection.
- ⚠ Be careful not to tear or bend the cable.

To reassemble your device, follow these instructions in reverse order.