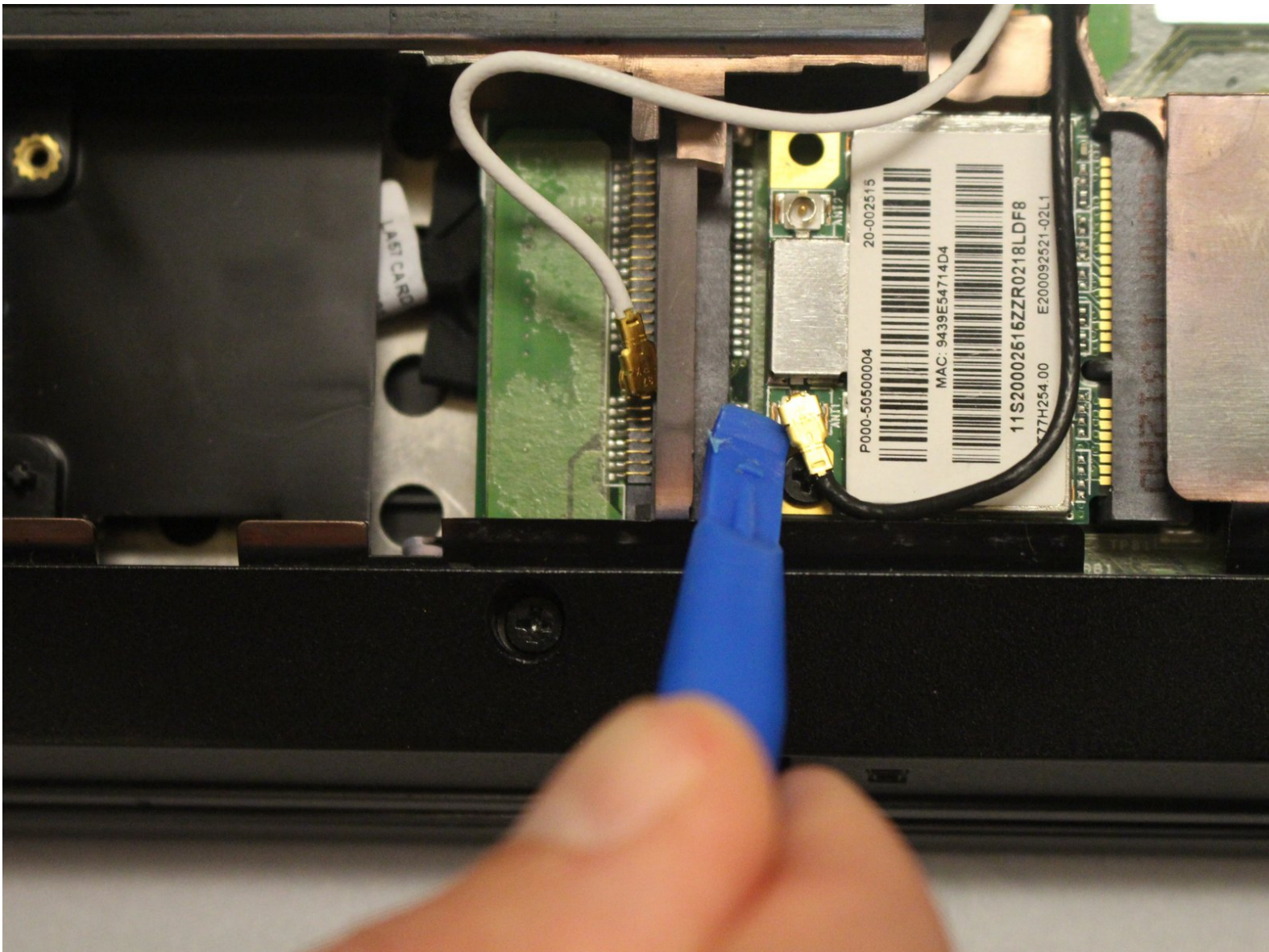




Lenovo B575-1450 Wi-Fi Card Replacement

This guide will go through the steps necessary to removing the Wi-Fi card from the Lenovo B575-1450

Written By: Carlo Calvillo



INTRODUCTION

A failing Wi-Fi card can be disastrous to a computers operations. It can prevent the laptop from accessing wireless resources and potentially cutting it off from the Internet. Removing and replacing the Wi-Fi card for this laptop is quick and easy.



TOOLS:

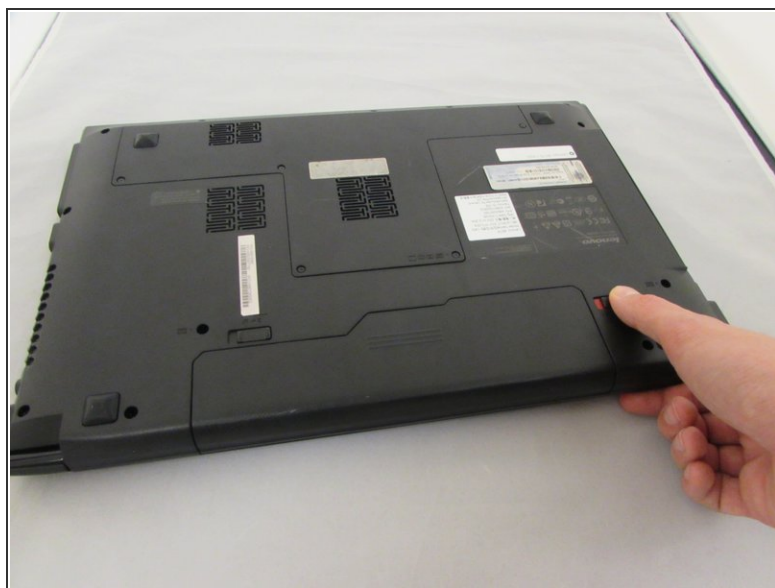
- [Phillips #00 Screwdriver](#) (1)
 - [iFixit Opening Tools](#) (1)
-

Step 1 — Battery



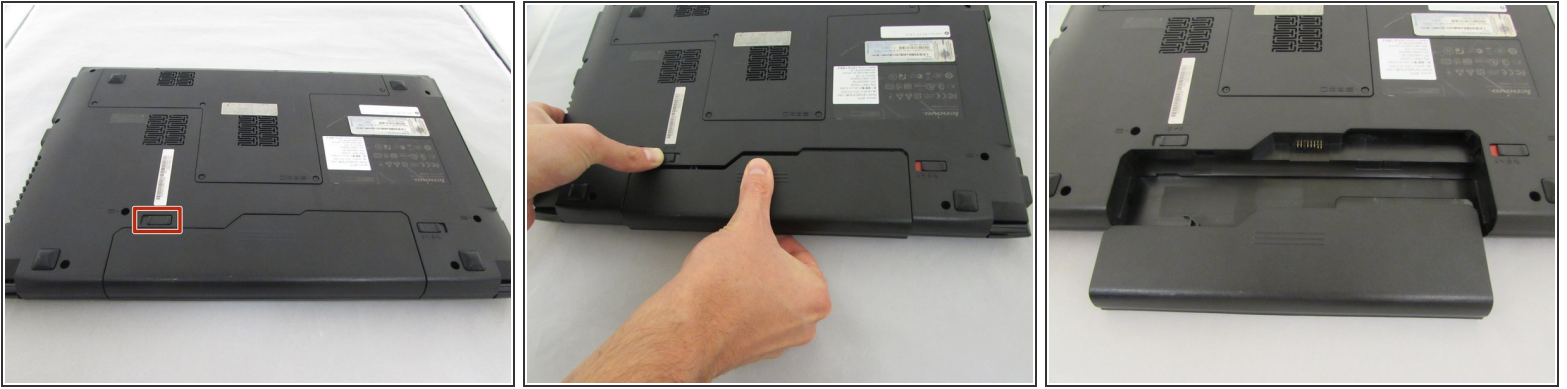
- Turn off the computer.
- Disconnect the charger from the computer.
- Flip the computer upside down.

Step 2



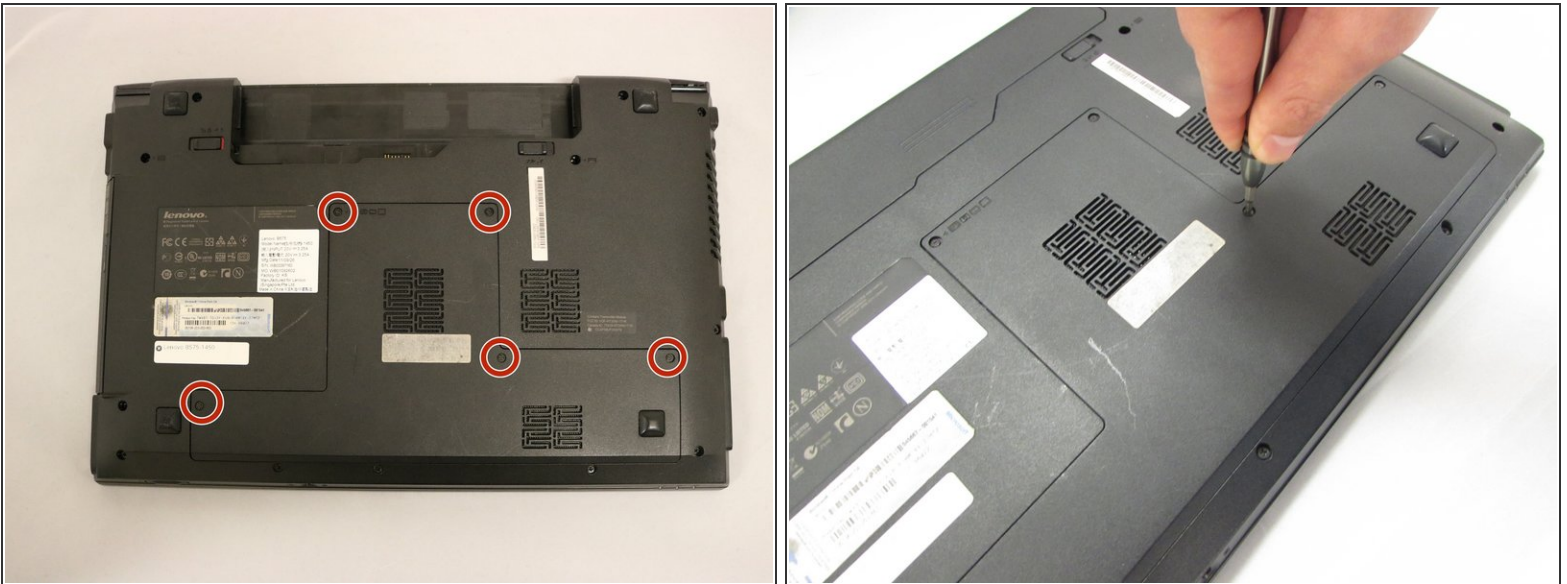
- Push the right-hand switch outward into the "unlocked" position.

Step 3



- While holding the battery, use your other hand to push the left clip to the left and pull the battery out.

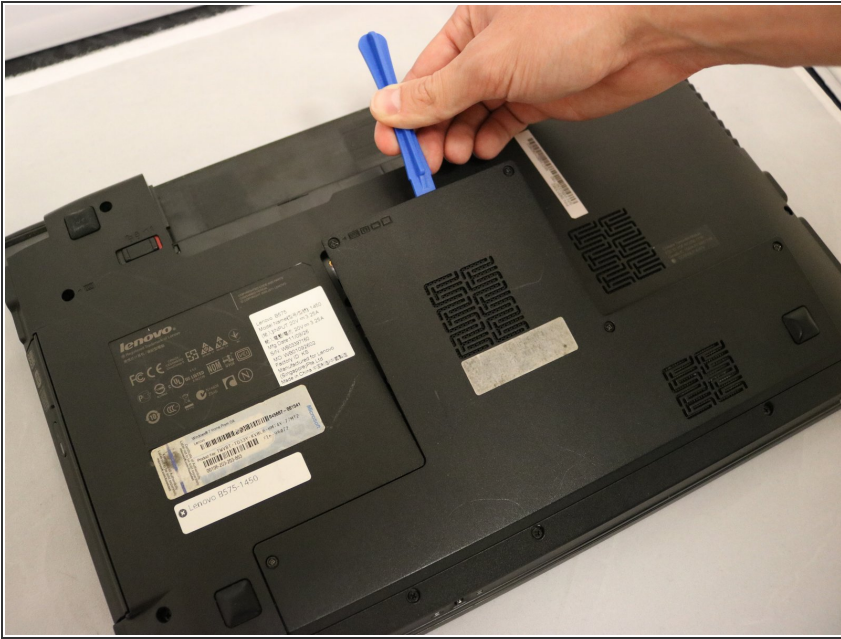
Step 4 — Back Panel



 The screws are captive to the back panel so they are not to be removed.

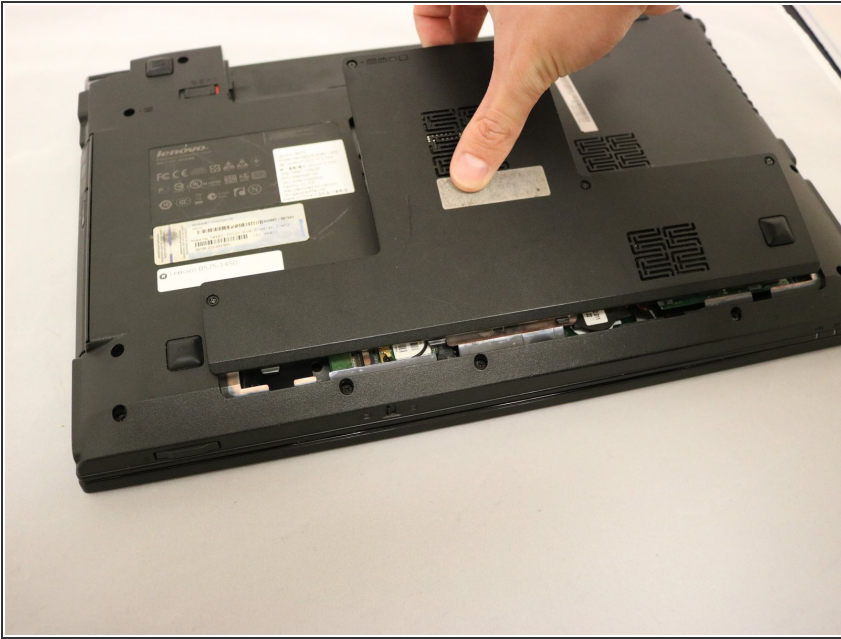
- Using the Phillips #00 Screwdriver, Loosen the five 5.4 mm screws around the back panel from the laptop.

Step 5



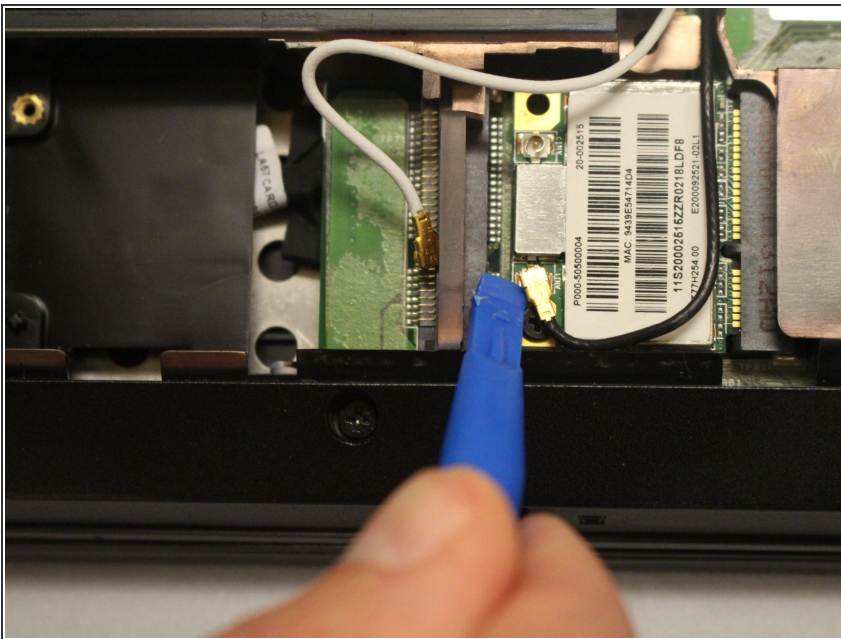
- Using a plastic opening tool, pry the back panel from the laptop.

Step 6



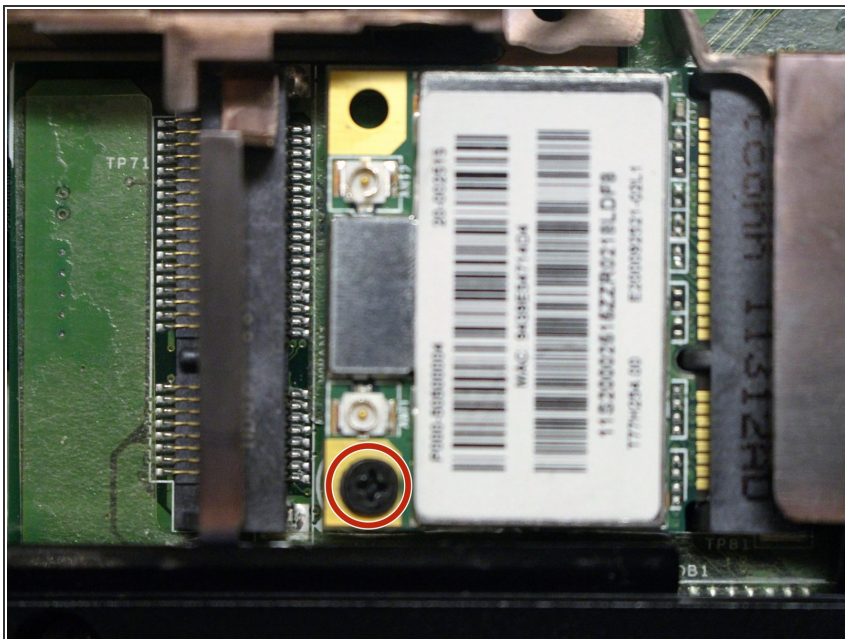
- Pull the panel outward from the rest of the laptop. The inside of the laptop will be exposed. From here you can access the CD-ROM drive, hard drive, and Keyboard.

Step 7 — Wi-Fi Card



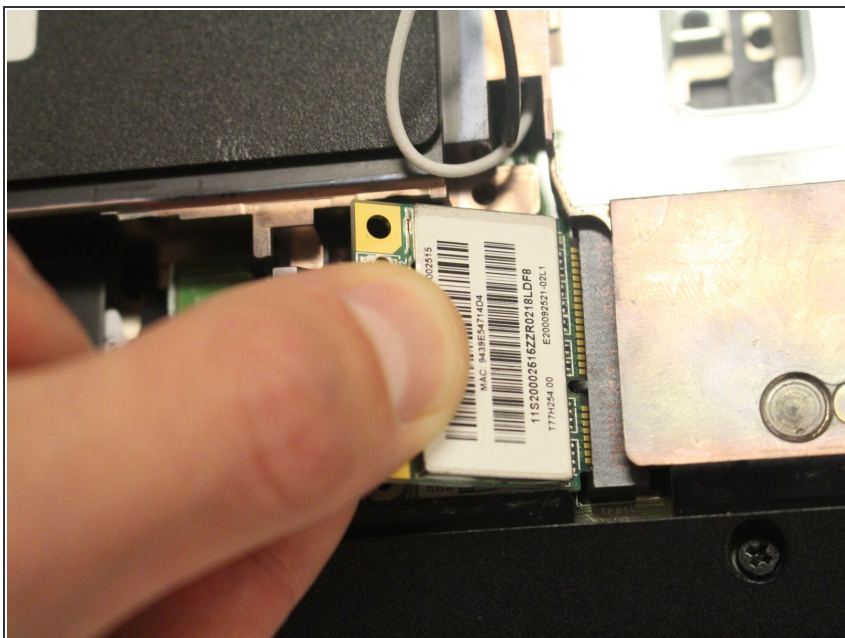
- Using the plastic opening tool, detach both black and grey cables from the Wi-Fi card.

Step 8



- Using the Phillips #00 Screwdriver, remove the one 3.4 mm screw from the Wi-Fi card.

Step 9



- Remove Wi-Fi card from the laptop by pulling it out.

To reassemble your device, follow these instructions in reverse order.