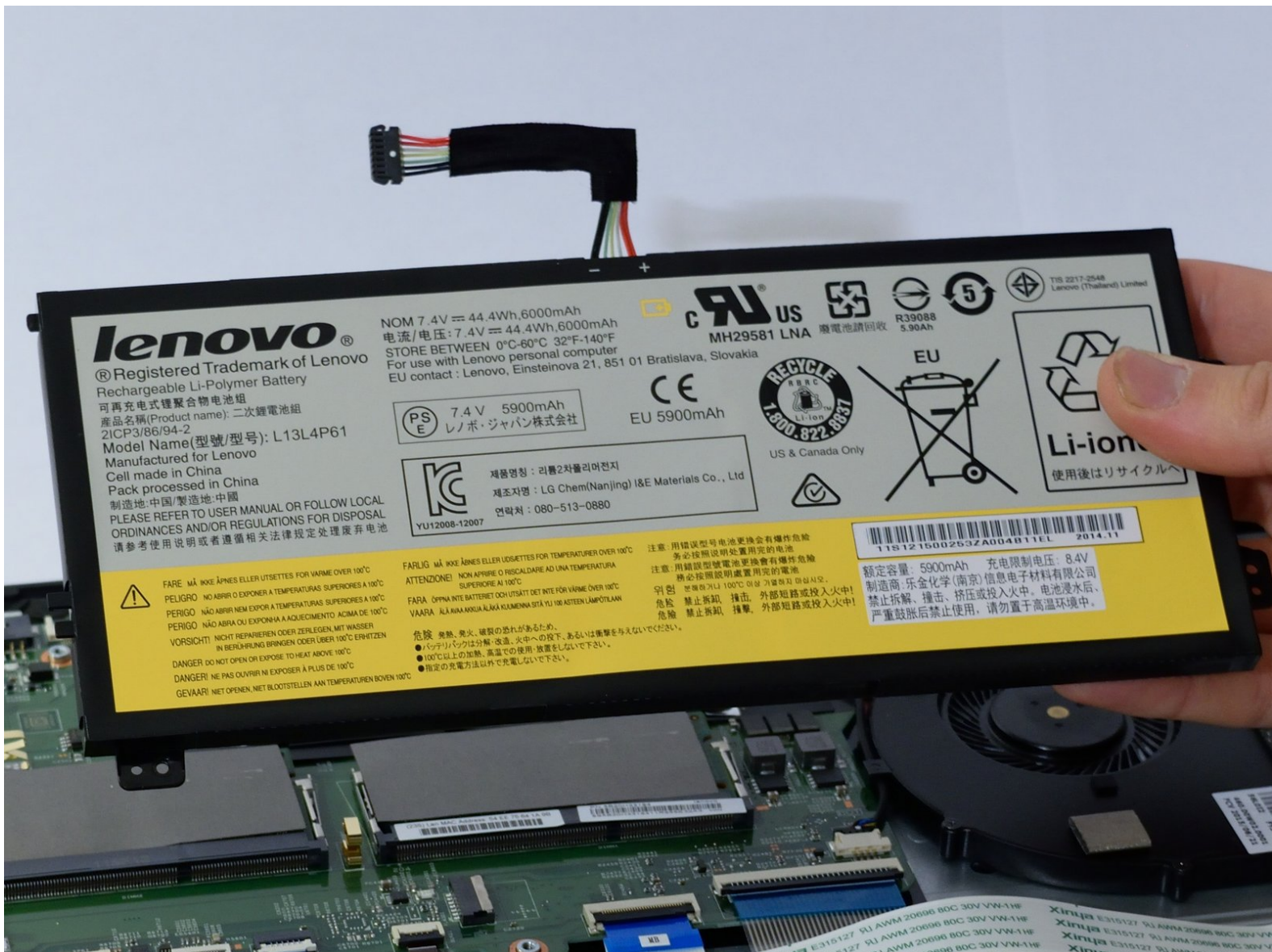




Lenovo Edge 15 Battery Replacement

This is a replacement guide for the Lenovo Edge 15 battery.

Written By: Cody Griffith



INTRODUCTION

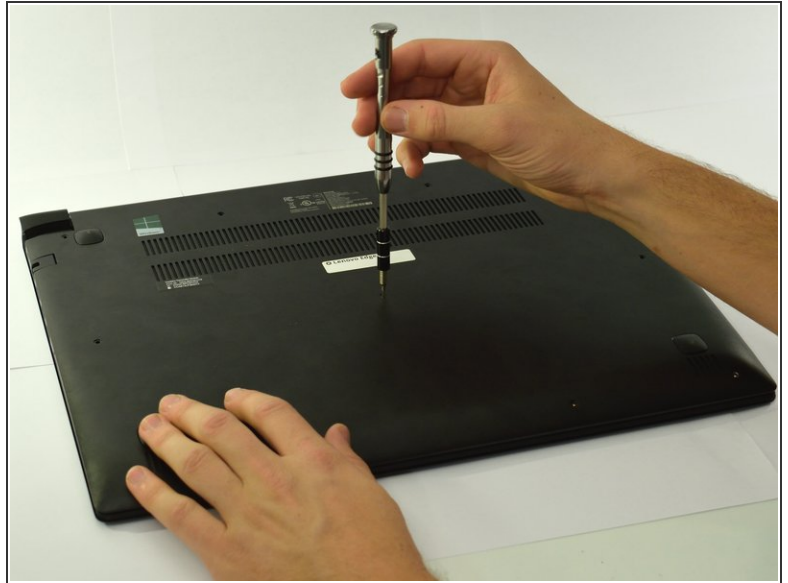
This guide will give you a step-by-step process for replacing the battery on the Lenovo Edge 15 laptop. You will need to remove the back-cover first. Caution: If battery is leaking do not touch it with your hands.



TOOLS:

- [Phillips #0 Screwdriver](#) (1)
-

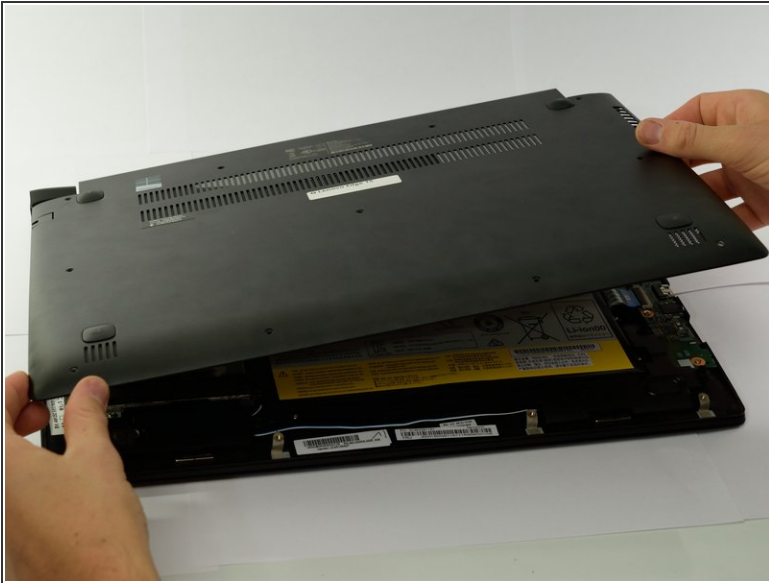
Step 1 — Battery



- Locate the eleven M2 x 6.0mm back-cover screws.
- Unscrew the screws using the Phillips #0 screwdriver.

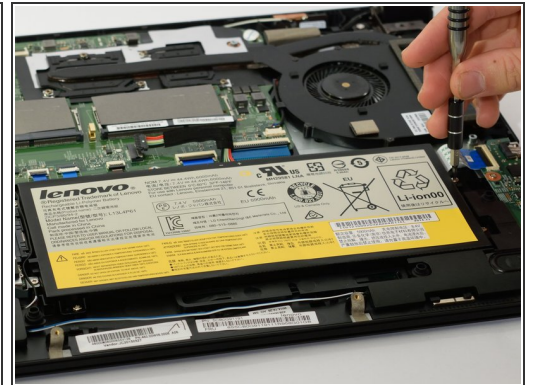
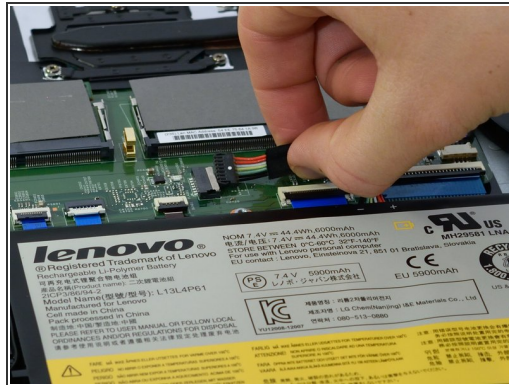
⚠ If battery is leaking, do not touch with bare hands.

Step 2



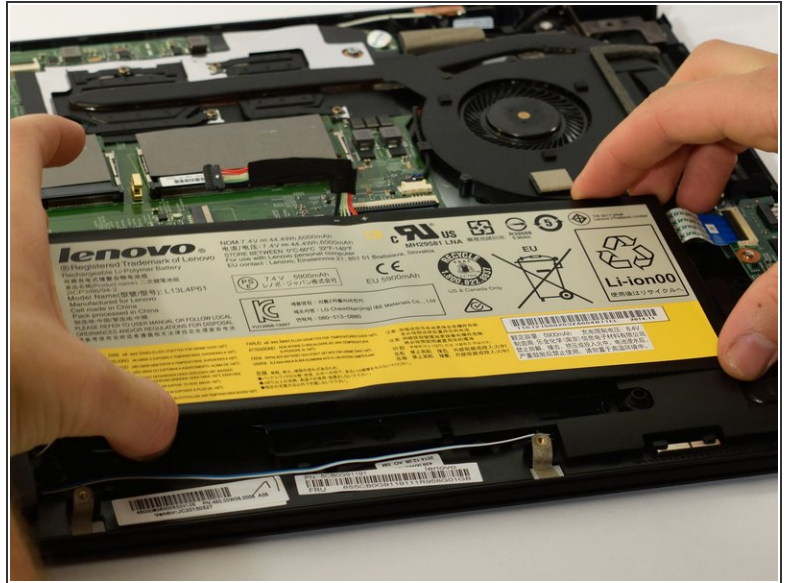
- Gently lift the cover plate off the body of the laptop, ensuring that it does not pull on any components such as the USB ports.

Step 3



- Locate the battery-connector and the three, M2 x 4.0mm screws holding the battery in place.
- Carefully unplug the battery-connector, wiggling the connector side to side if needed.
- Unscrew the 3-screws using the Phillips # 0 screwdriver.

Step 4



- Gently lift all four corners of the battery to remove it from the laptop.

To reassemble your device, follow these instructions in reverse order.