



Lenovo Edge 15 Ram Card Replacement

This guide will instruct on how to replace or install ram (Random Access Memory) cards into your Lenovo Edge 15

Written By: ryan sanders



INTRODUCTION

This guide will show how to remove and install ram card in your Edge 15. This can be used to replace a broken card or to add more ram to increase the ram in your computer.



TOOLS:

- [Phillips #0 Screwdriver](#) (1)



PARTS:

- [PC3-10600 8 GB RAM Chip](#) (1)

Step 1 — Ram Card



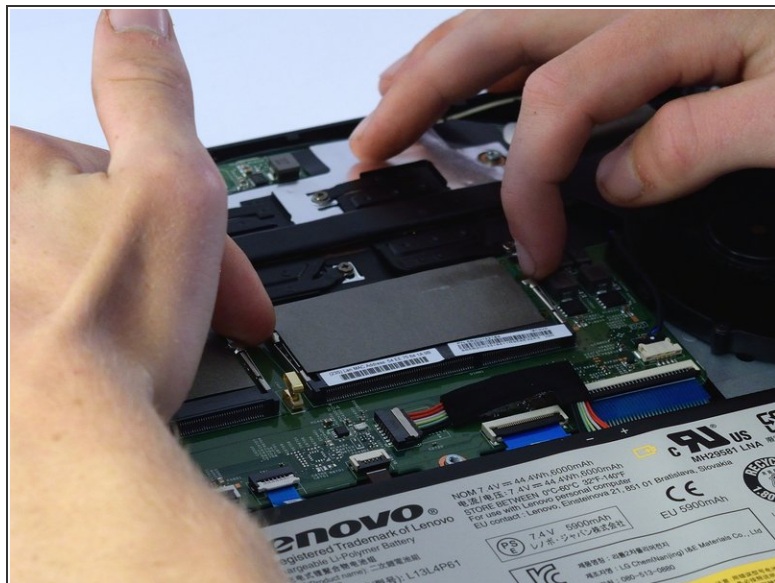
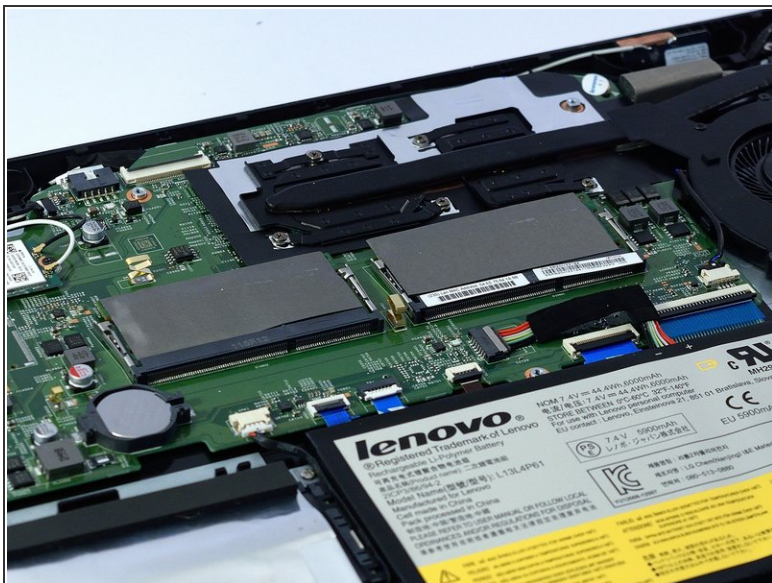
- With the laptop upside-down, remove all 11 M2 x 6.0mm screws from the cover plate using the Phillips #0 screwdriver.

Step 2



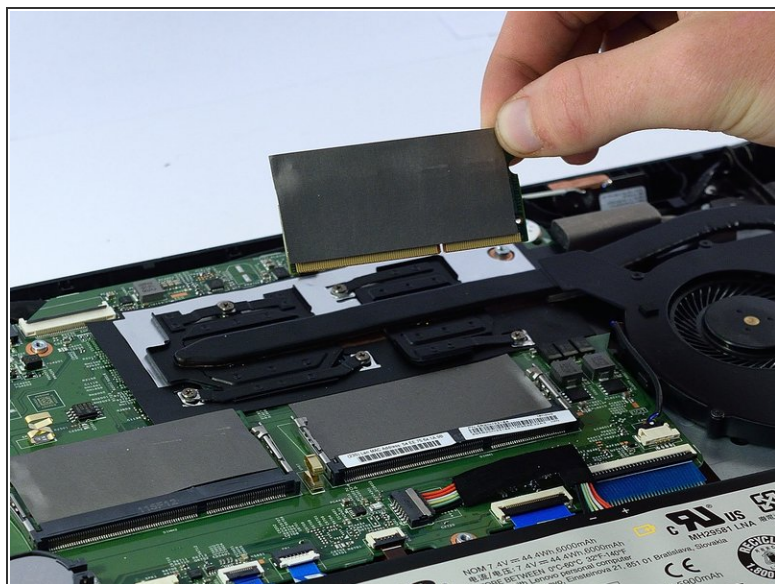
- Gently lift the cover plate off the body of the laptop, ensuring that it does not pull on any components such as the USB ports.

Step 3



- Release clips on both sides of ram unit.

Step 4



- With ram unit now erect use hands to remove unit from its slot.
- ☑ Place new ram unit into the slot and lightly press down to snap it back into place.

To reassemble your device, follow these instructions in reverse order.