



Lenovo Edge 2-1580 Fan Replacement

This guide describes the steps to replace the Lenovo Edge 2-1580 fan.

Written By: Julian Escallon



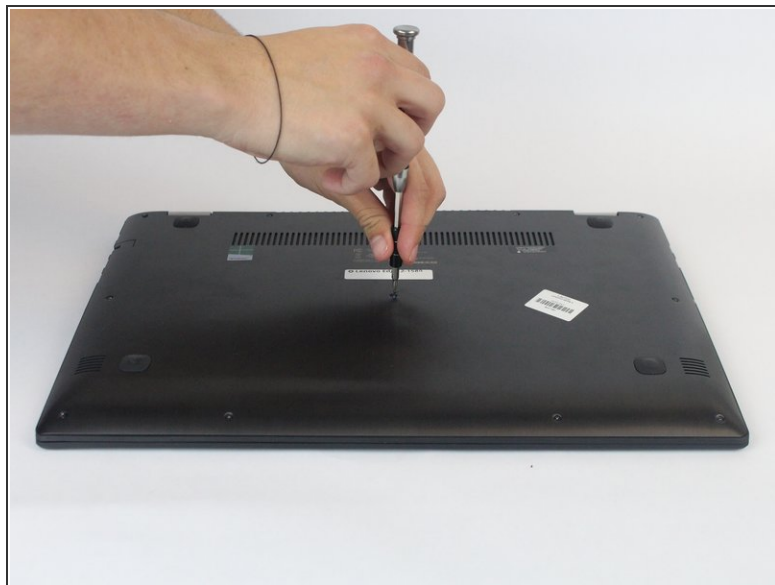
INTRODUCTION

This guide will show you how to remove and replace the fan cooling solution of the laptop if for some reason it has become faulty and needs replacement.

TOOLS:

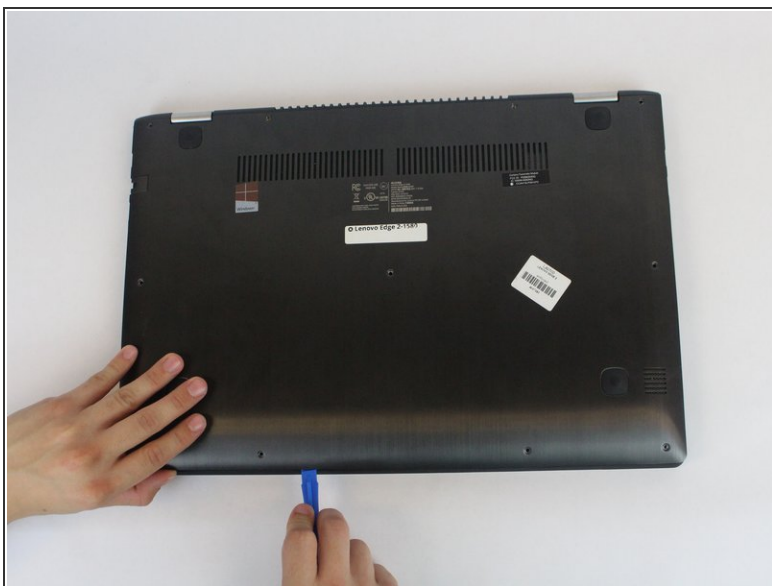
- [Phillips #0 Screwdriver](#) (1)
 - [iFixit Opening Tools](#) (1)
-

Step 1 — Battery



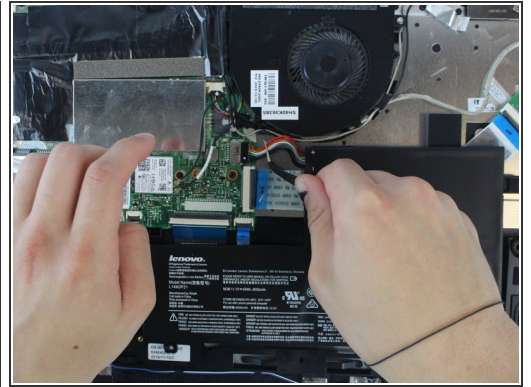
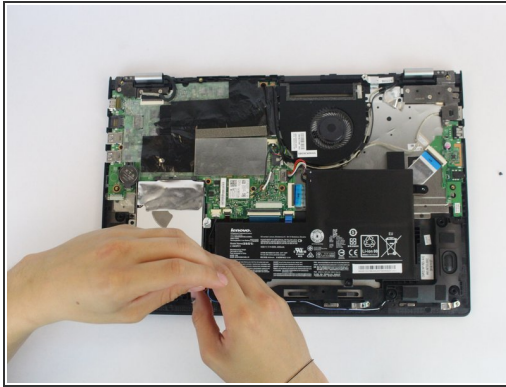
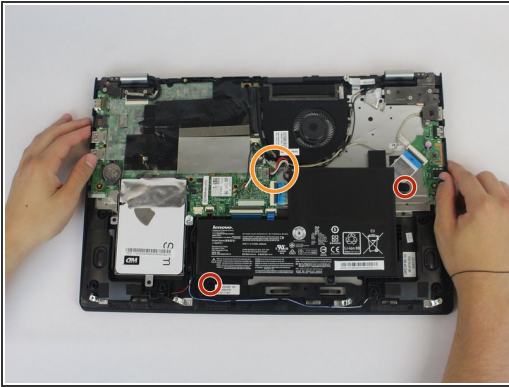
- Using the Phillips #0 screwdriver, remove the (11) eleven 5.4 mm screws from the back panel.

Step 2



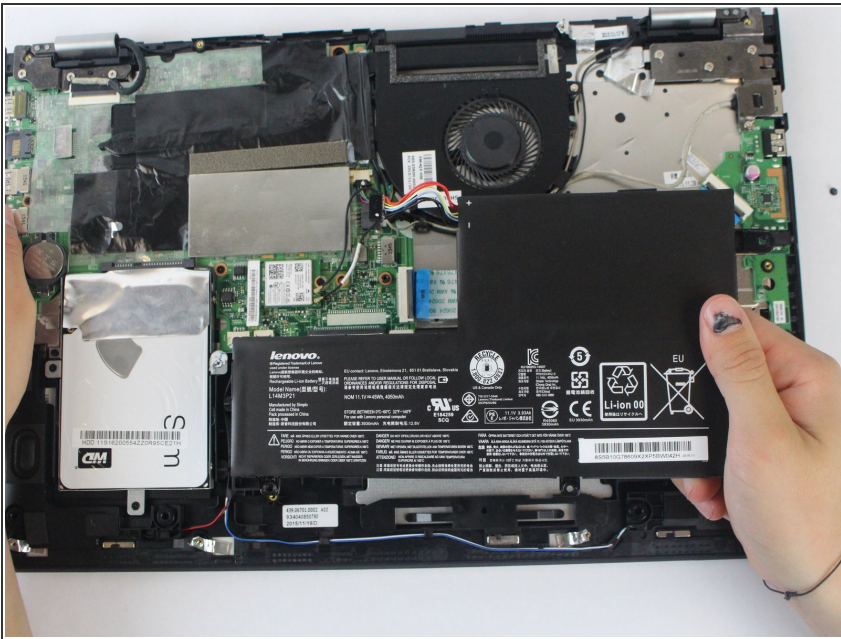
- Using a plastic opening tool, pull out the back panel from the laptop.

Step 3



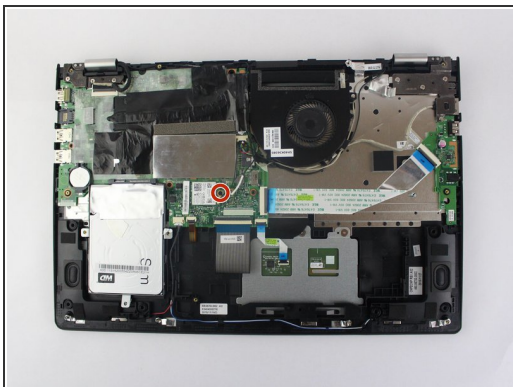
- Using the Phillips #0 screwdriver, remove the (2) 5.4 mm screws.
- Disconnect the battery connector from the motherboard.

Step 4



- Pull the battery outward and remove it from the rest of the laptop.

Step 5 — Fan



- Remove the 5.4 mm Phillips #0 screw holding the Wireless Network Card.

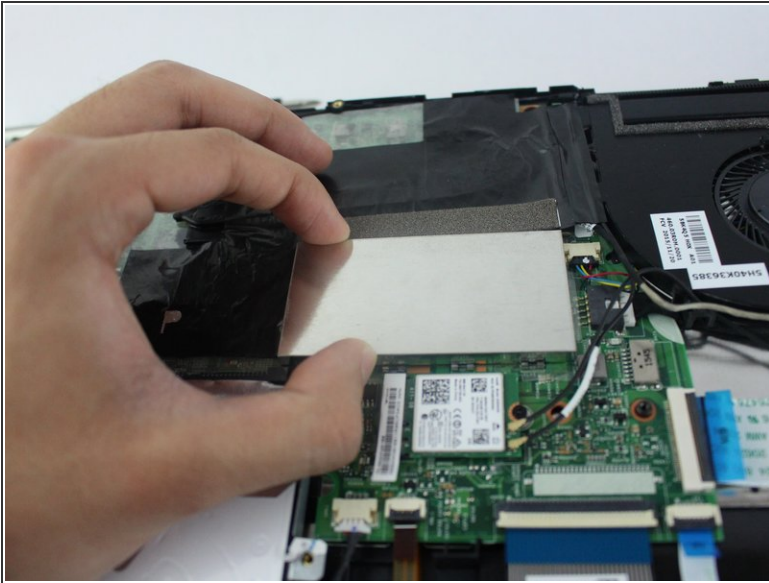
i The network card will pop up by itself.

Step 6



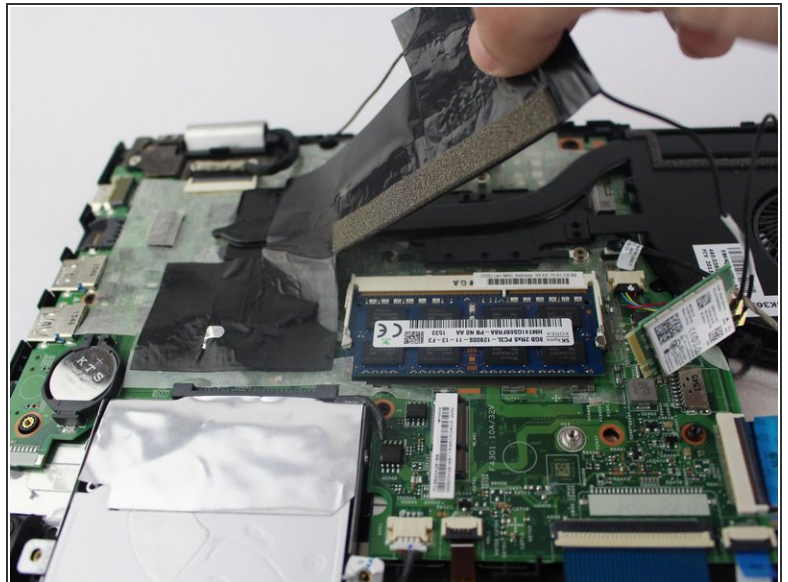
- Grab the network card and gently pull it out.

Step 7



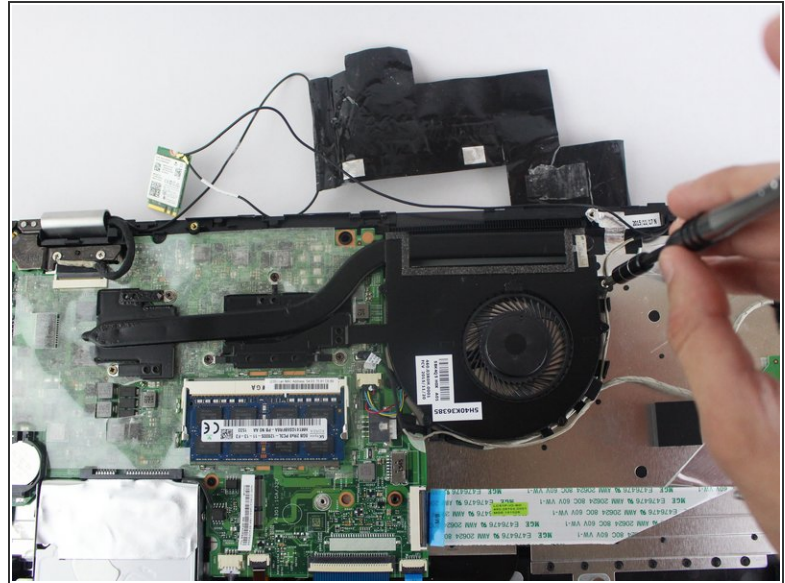
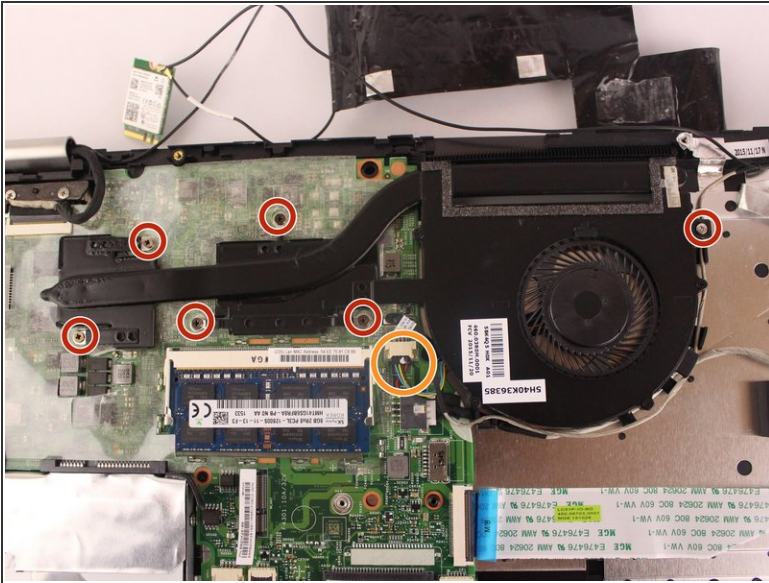
- Pull out the RAM metallic cover.

Step 8



- Grab the black insulating tape and pull it out.

Step 9



- Using the Phillips #0 screwdriver, remove the (6) six fan screws from the device.

i (5) Five copper and (1) one silver Phillips #0 5.4mm screws.

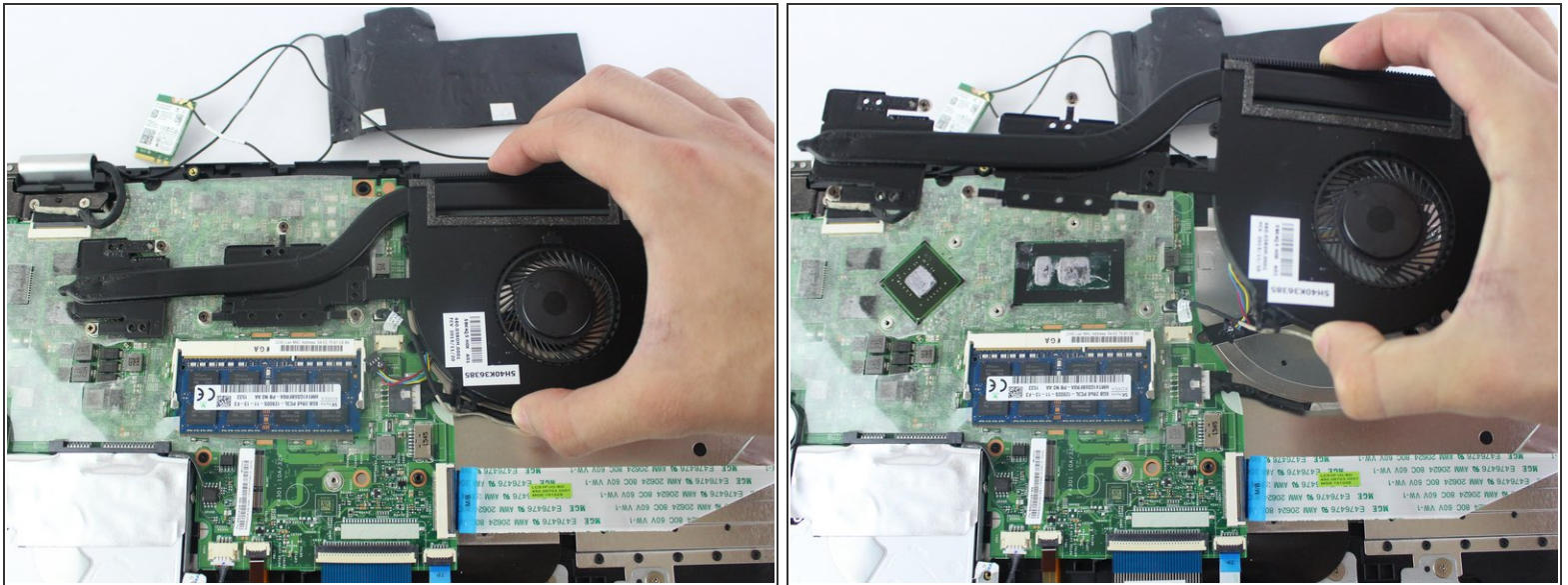
- Disconnect the fan from the motherboard.

Step 10



- Unplug the Fan connector from its socket on the motherboard.

Step 11



- Carefully remove the fan from the laptop.

To reassemble your device, follow these instructions in reverse order.