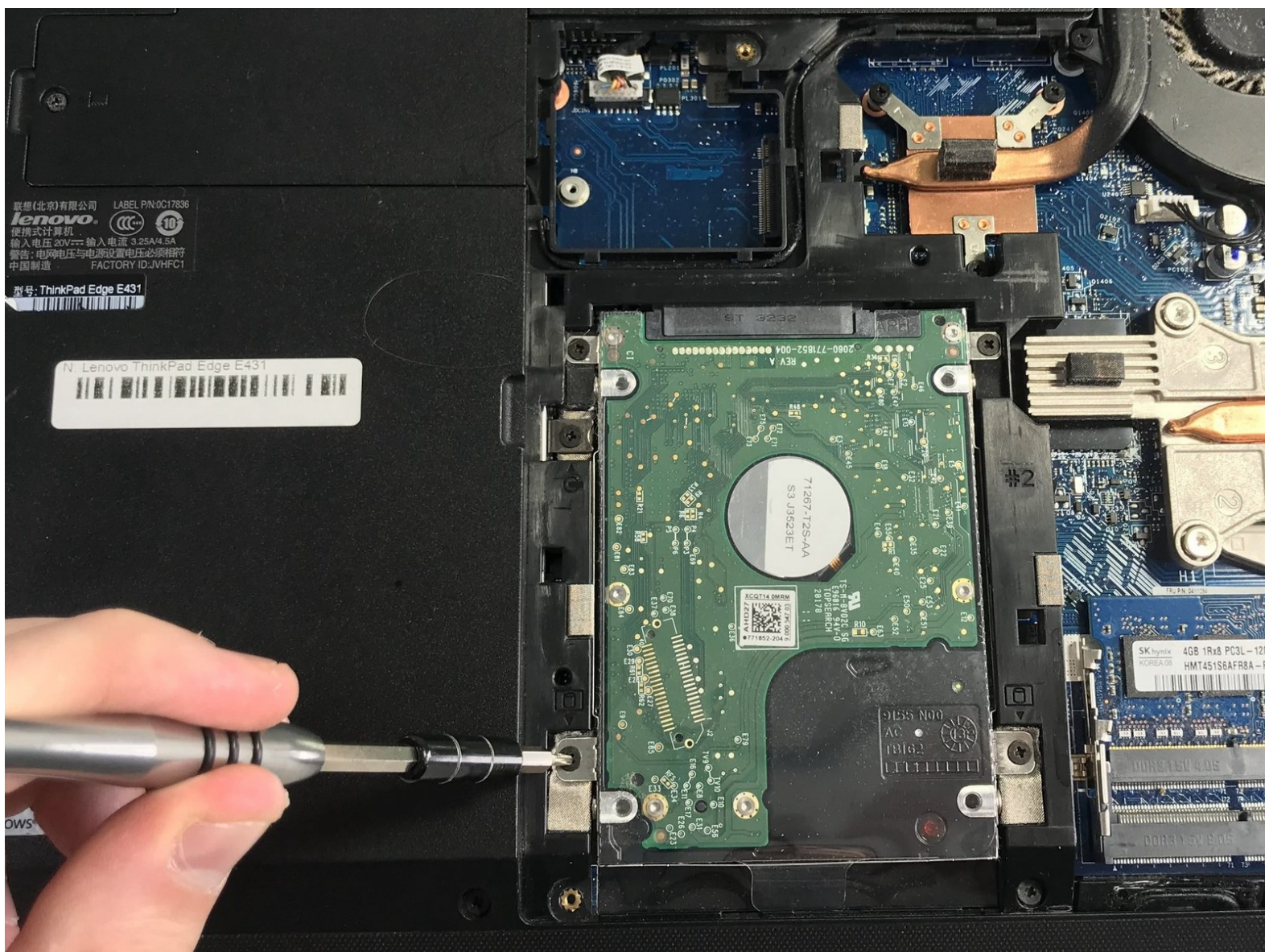




Lenovo Edge Thinkpad E431 Hard Disk Drive Replacement

A guide on how to replace the hard drive on a Lenovo ThinkPad Edge E431 laptop.

Written By: Angela Ferguson



INTRODUCTION

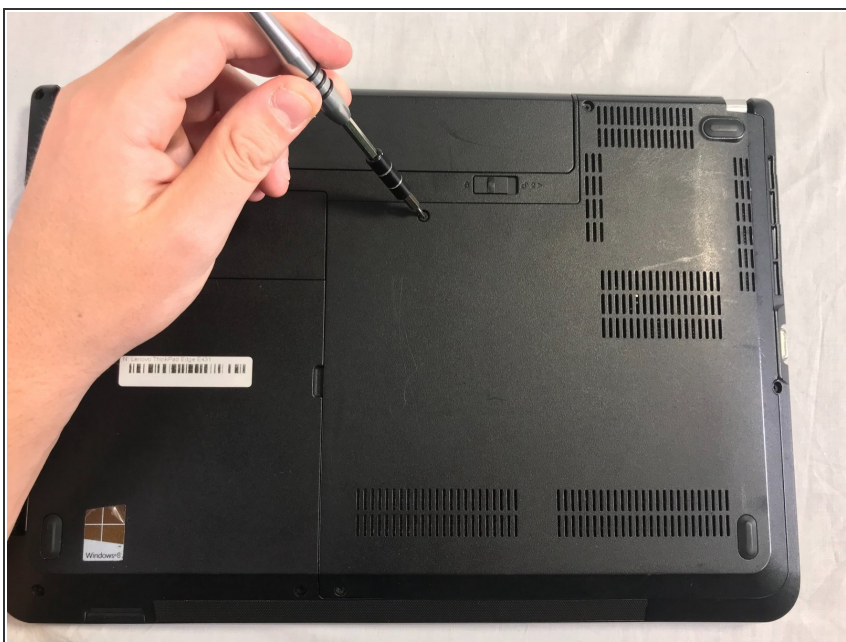
A guide on how to replace the hard drive on a Lenovo ThinkPad Edge E431 laptop.



TOOLS:

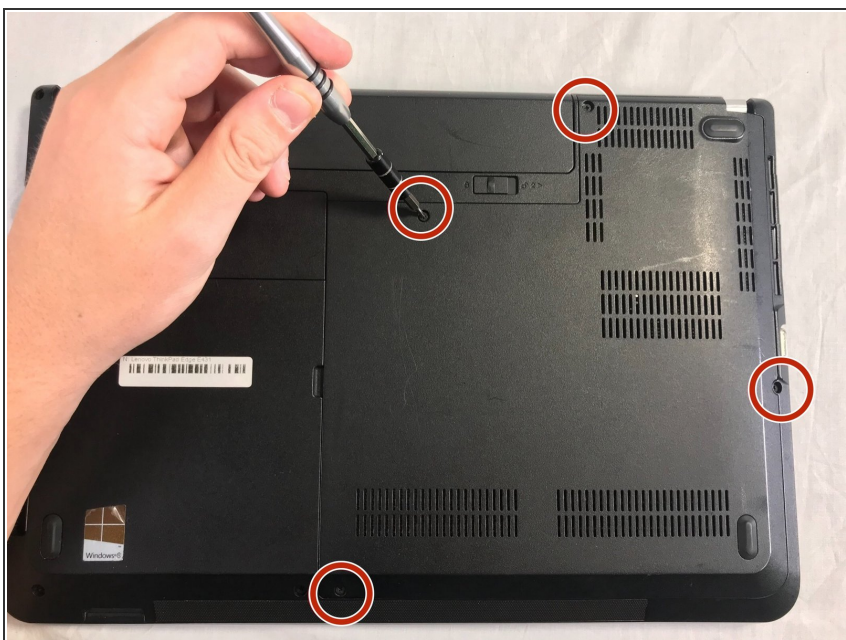
- [Phillips #00 Screwdriver](#) (1)
 - [Spudger](#) (1)
-

Step 1 — Bottom Panel



- Close the device and remove all power cables.
- Lay the laptop flat with the bottom facing upwards.

Step 2



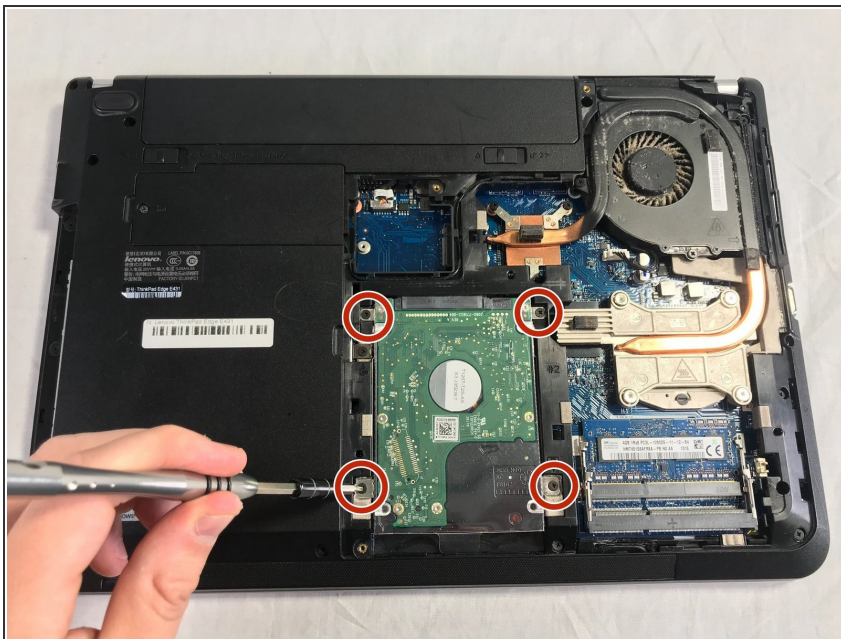
- Remove the four 2mm Phillips #00 screws from the bottom panel.

Step 3



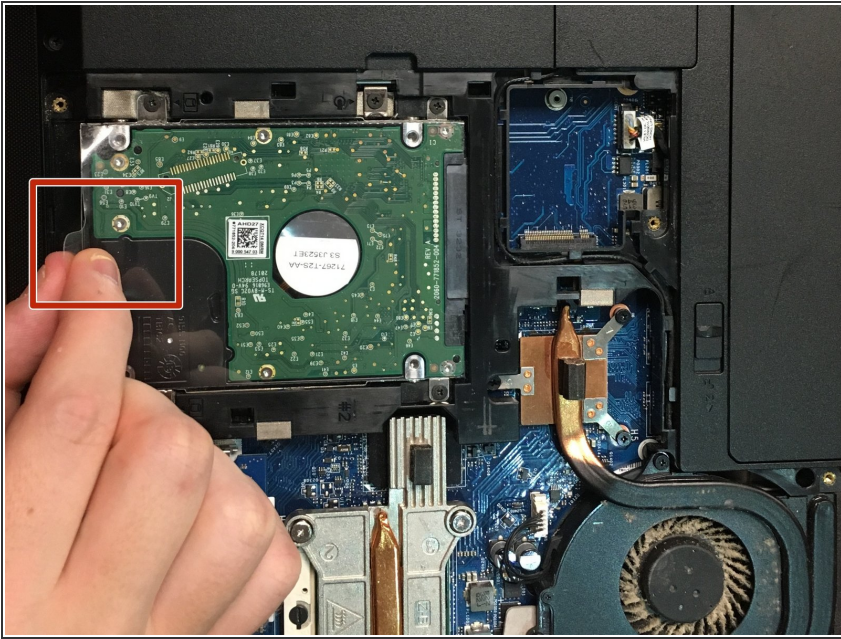
- Remove the back panel of the device.

Step 4 — Hard Disk Drive



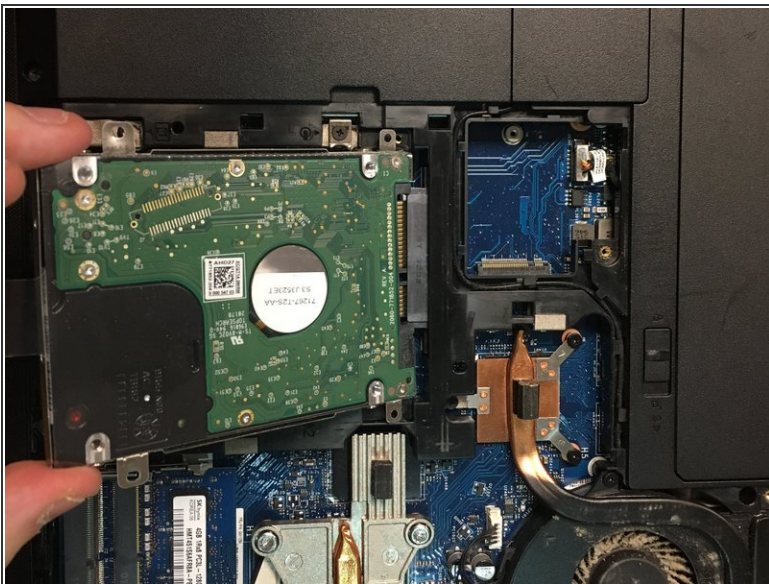
- Remove four 2mm Phillips #00 screws from the hard drive.

Step 5



- Lift the HDD upwards by pulling on the plastic tab to begin removal.

Step 6



- Pull the HDD out of its socket.

To reassemble your device, follow these instructions in reverse order.