



Lenovo Essential B570 Keyboard Replacement

Use this guide to remove your Keyboard.

Written By: Samuel Filiettaz



INTRODUCTION

This guide will show you how to remove your Keyboard in order to replace with a new one of the same model.



TOOLS:

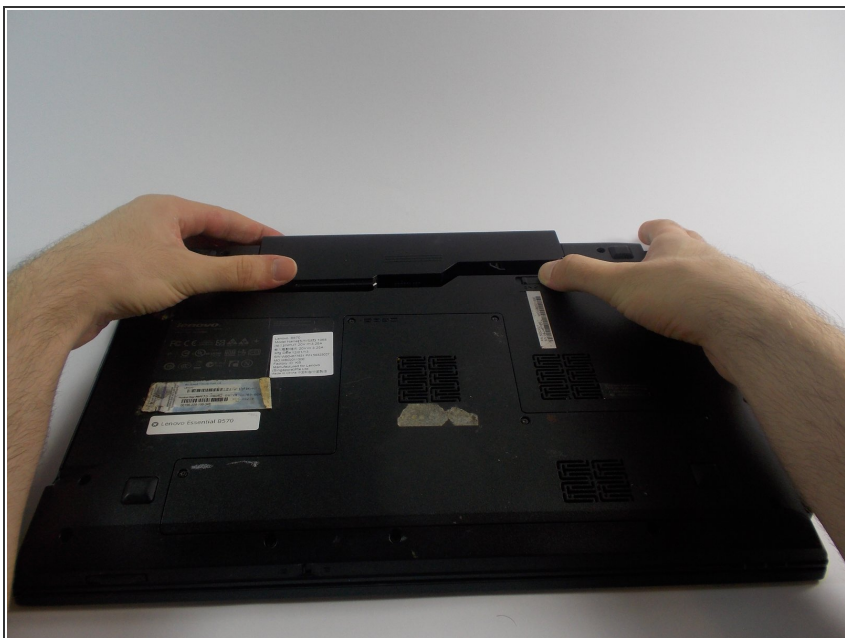
- [iFixit Opening Tools](#) (1)
 - [64 Bit Driver Kit](#) (1)
-

Step 1 — Battery



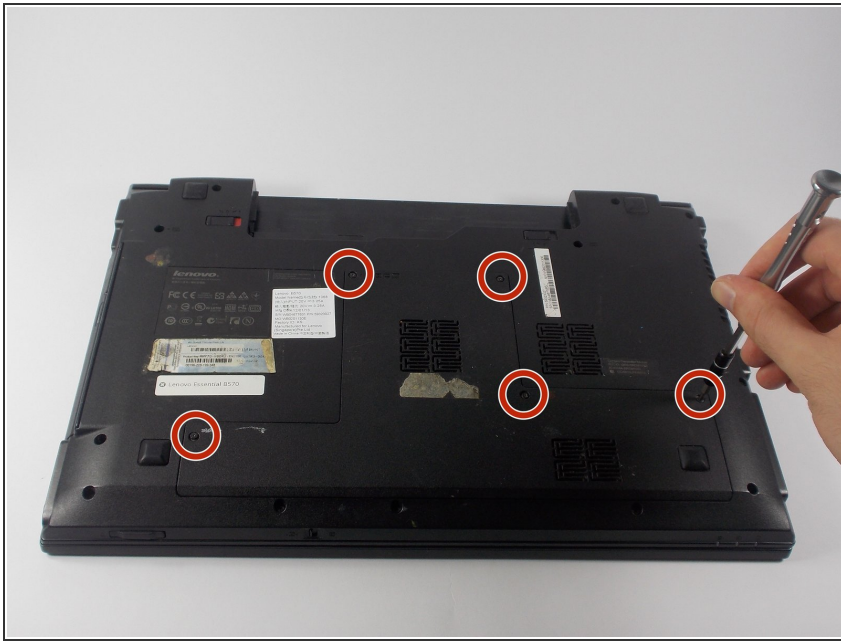
- Turn over laptop.
- Switch open the left battery lock.
- ⓘ If you are replacing inner components of the laptop, it is recommended to remove the battery first to avoid damage to the laptop.

Step 2



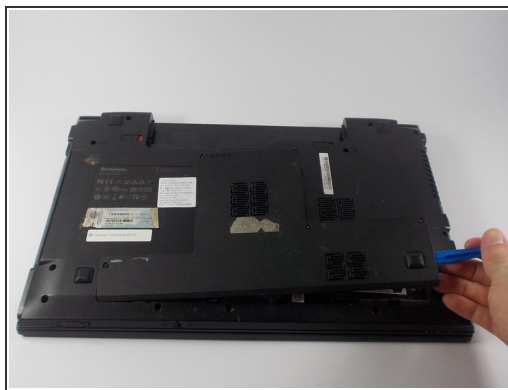
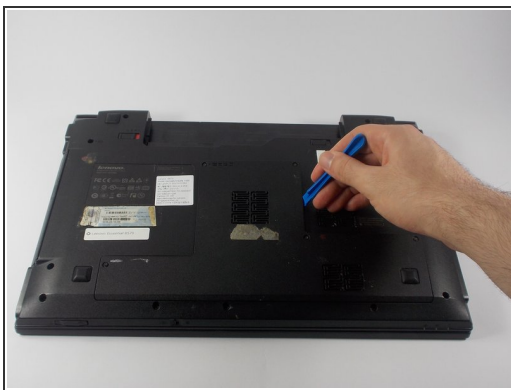
- Hold the right battery lock open with one hand while removing the battery itself with the other.

Step 3 — Back Panel



- Loosen the five Philips screws that secure the panel.
- ⓘ The screws do not actually fully remove from the panel. Loosening them as much as you can will be enough to disconnect them from the laptop.

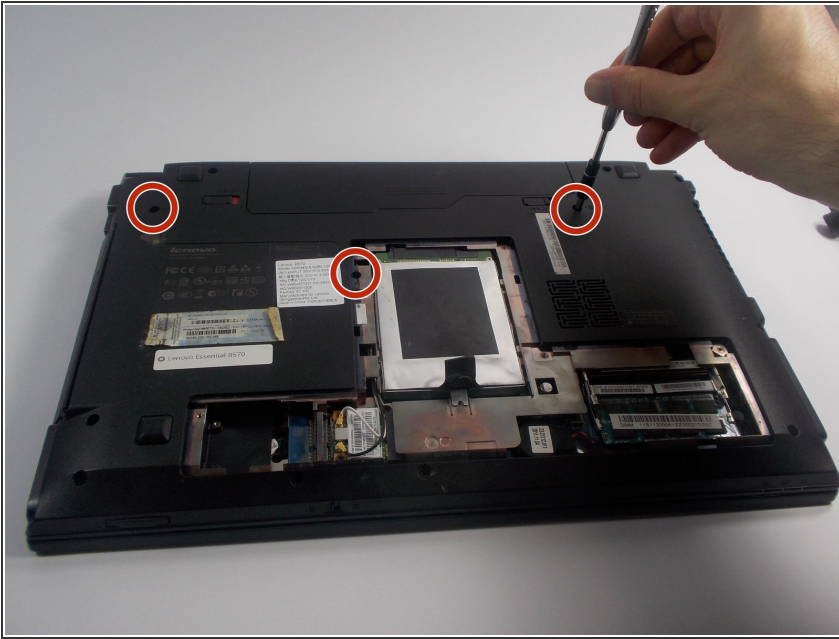
Step 4



- Prop open the cover with a plastic opening tool.

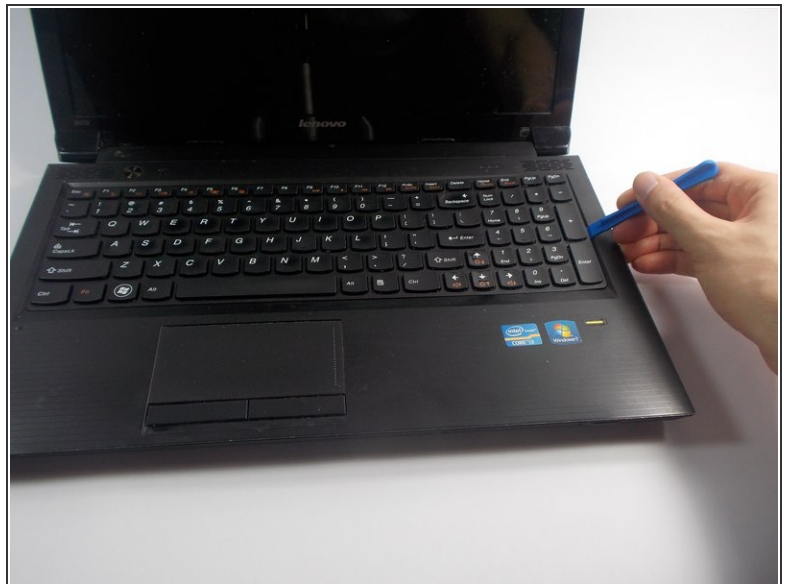
⚠ If the cover does not come off easily, do not force it. Make sure all screws are loosened.

Step 5 — Keyboard



- Remove the three 3 mm Phillips screws holding the keyboard in. These screws are designated by an imprinted keyboard picture next to them.

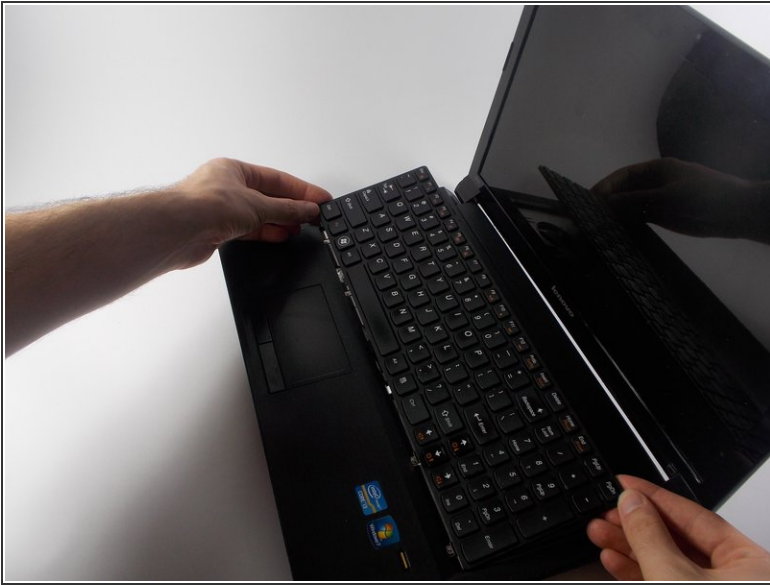
Step 6



- Carefully pry off the keyboard with your plastic opening tool , moving along the edges.

 DO NOT immediately remove the keyboard as it is still connected underneath by a wire.

Step 7



- Carefully lift the keyboard.
- ⚠ The keyboard is still connected to the laptop. Lift it slowly.
- Turn over the keyboard to locate the keyboards ribbon cable.

Step 8



- Use the plastic opening tool to lift open the ribbon connector that is holding the ribbon cable in its slot.

Step 9



- Remove the cable from its slot.



If the cable does not come out easily, ensure that the black ribbon has been completely released.

To reassemble your device, follow these instructions in reverse order.