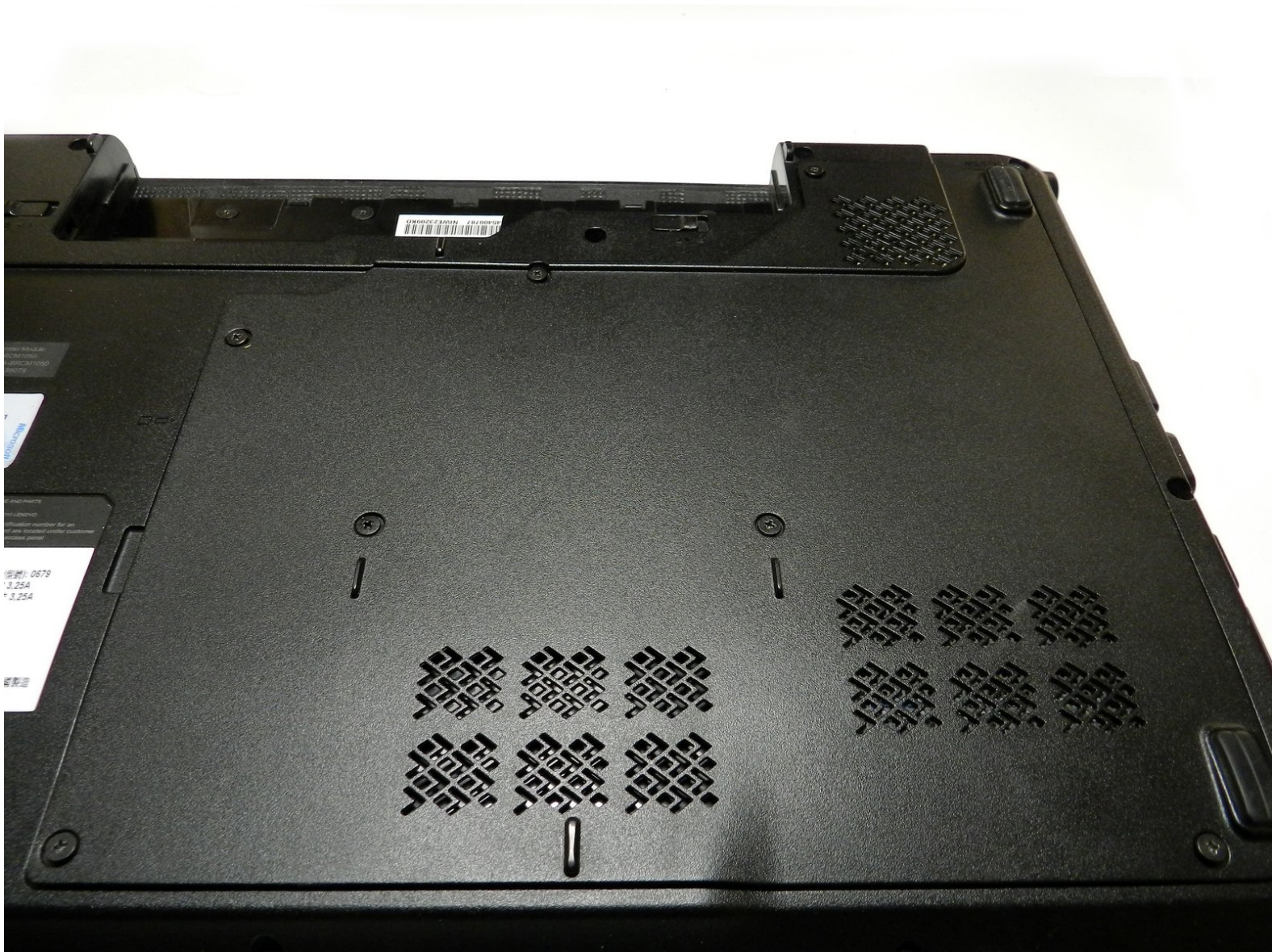




Lenovo Essential G560 Back Panel Replacement

This guide will help with the removal of the back panel. This is a necessary step before installing the hard drive, the RAM, and the keyboard.

Written By: Lawrence Downs



INTRODUCTION

This guide is only used as a precursor to the hard drive, RAM, and keyboard removal.



TOOLS:

- [Phillips #1 Screwdriver](#) (1)
-

Step 1 — Battery



- Turn off the computer.
- Disconnect the charging cable from the computer.
- ⚠ Failure to unplug the cable could result in electric shock.
- Flip the computer upside down.

Step 2



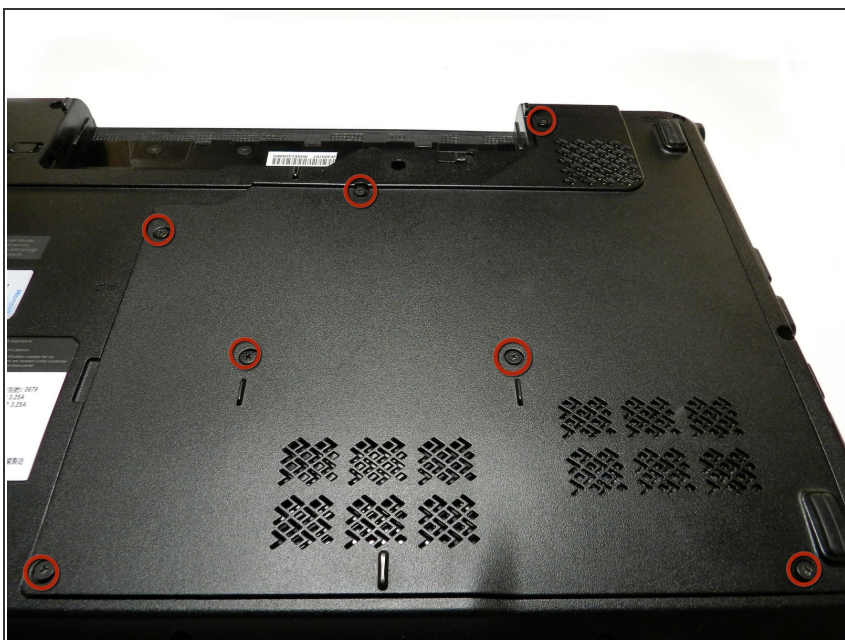
- Locate the two switches that lock the battery. Push the right-hand switch outward into the "unlocked" position.

Step 3



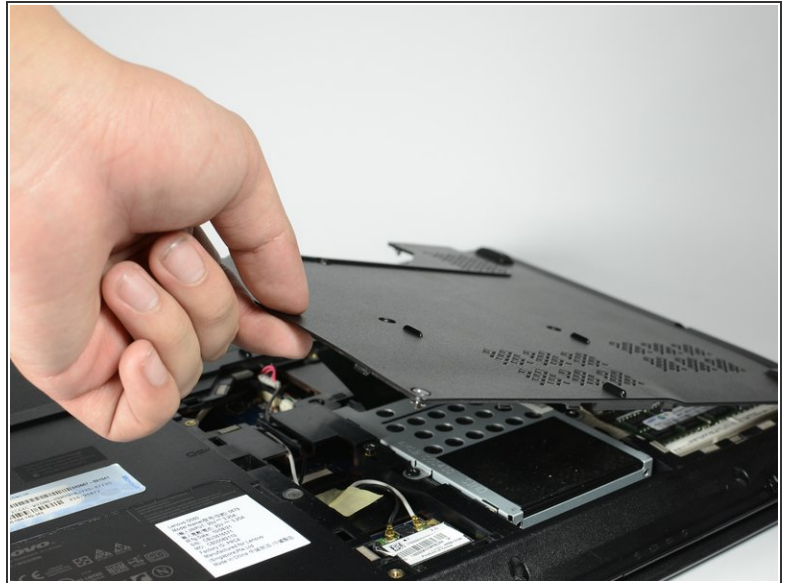
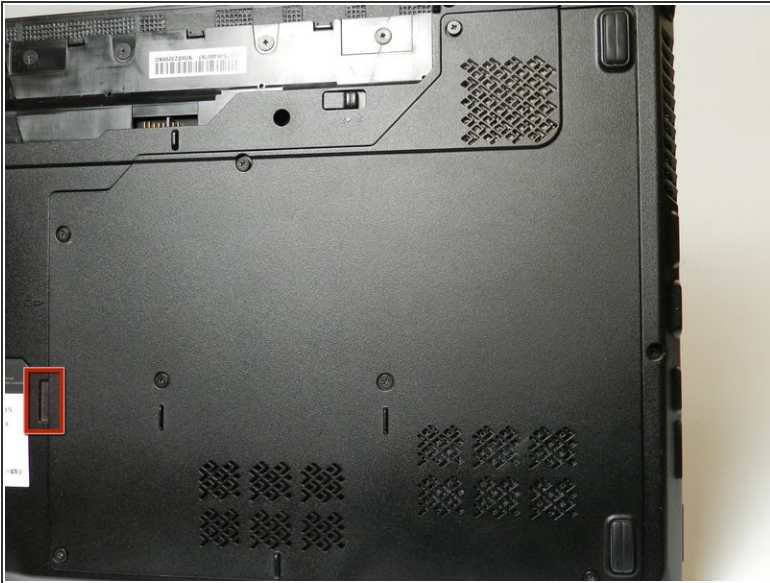
- Push and hold the left hand switch outward in the "unlocked" position, then gently slide the battery away from the computer.

Step 4 — Back Panel



- Remove the seven 5.3 mm Phillips #1 screws holding the back panel in place.

Step 5



- Pull the back panel off using the highlighted tab. The tab should give you enough leverage to pull the panel off smoothly.
- ⚠ If the back panel is difficult to remove and feels like it is going to break, DO NOT force it. Check to confirm that all the screws are removed before attempting again.

Step 6



- The computer should be open with many of the internal components shown. You can now access the hard drive, the RAM, and the keyboard.

To reassemble your device, follow these instructions in reverse order.