



# Lenovo Flex 3-1120 Battery Replacement

Replace the battery on a Lenovo Flex 3-1120

Written By: Geoff Bentz



## INTRODUCTION

This guide is intended to help you to replace your battery. The battery may need to be replaced in instances where your computer will not hold a charge or turn on.

---

### TOOLS:

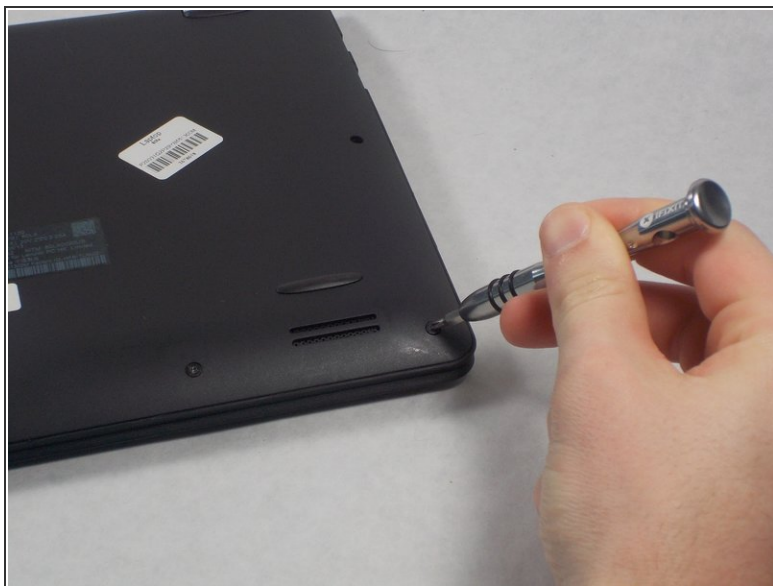
- [Phillips #0 Screwdriver](#) (1)
  - [iFixit Opening Tools](#) (1)
-

## Step 1 — Bottom Panel



- Lay the computer down with the bottom panel facing up.

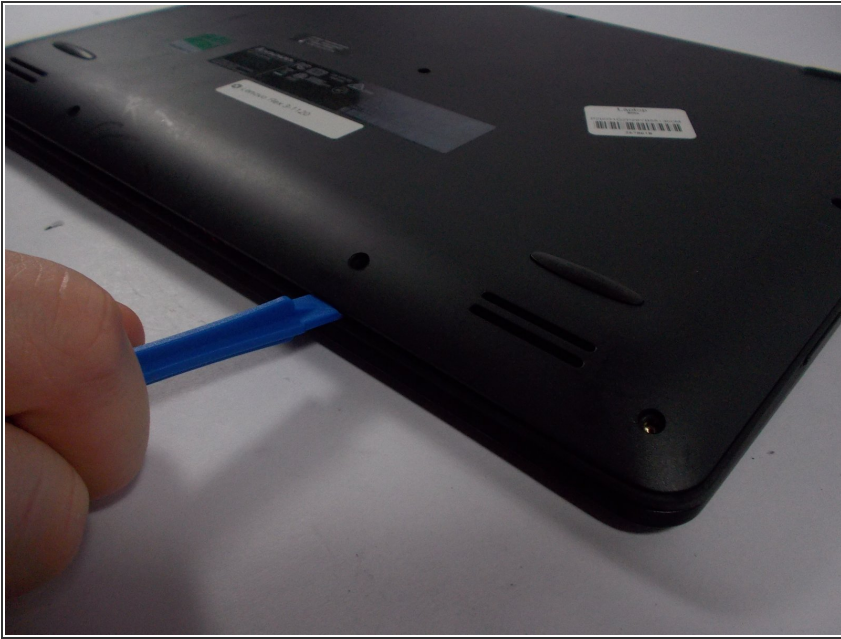
## Step 2



- Locate the ten 6mm Phillips screws along the edges and in the center of the back panel.
- Remove all ten 6mm Phillips screws with a size 0 Phillips screwdriver.



### Step 3



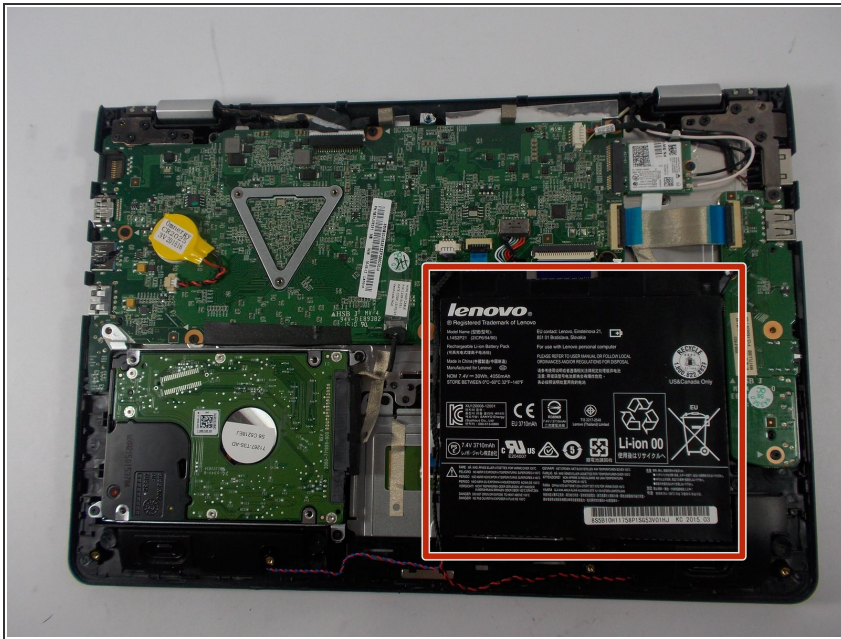
- Wedge the plastic opening tool into the small space under the back panel.
  - Use the plastic opening tool as a lever to separate the bottom panel from the computer.
  - Slide the tool along the edges of the computer until the bottom panel is completely separated.
- i** You may start prying the bottom panel on any edge.

### Step 4



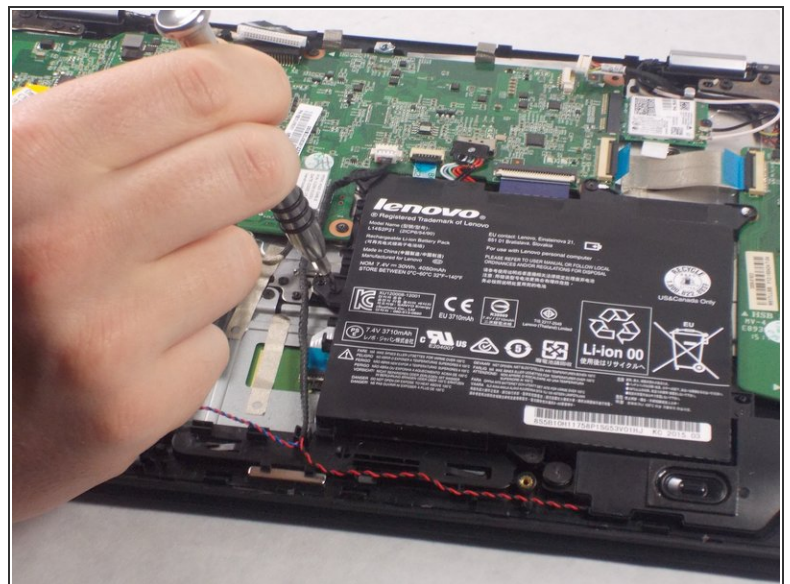
- Lift the bottom panel off of the computer.

## Step 5 — Battery



- Locate the black battery on the bottom right of the computer.

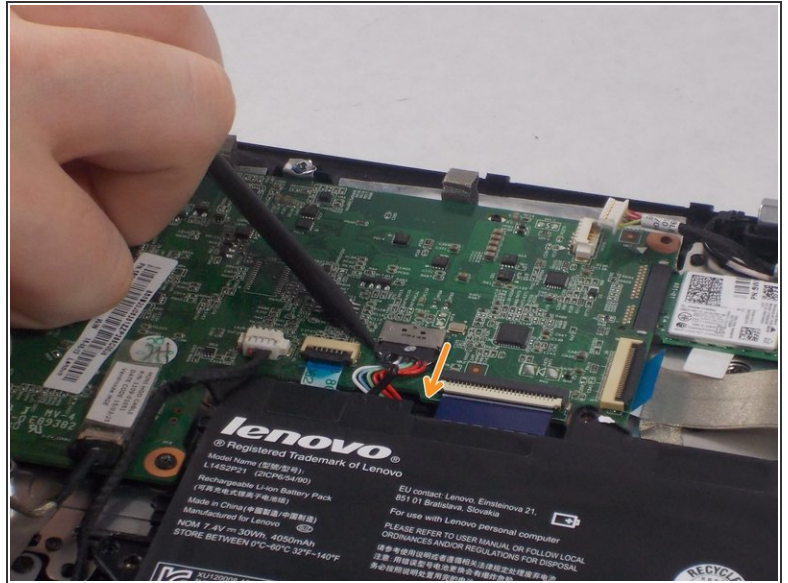
## Step 6



- Locate the six 3.5mm Phillips head screws along the edges of the battery.
- Remove all six of the screws using a size 0 Phillips screwdriver.

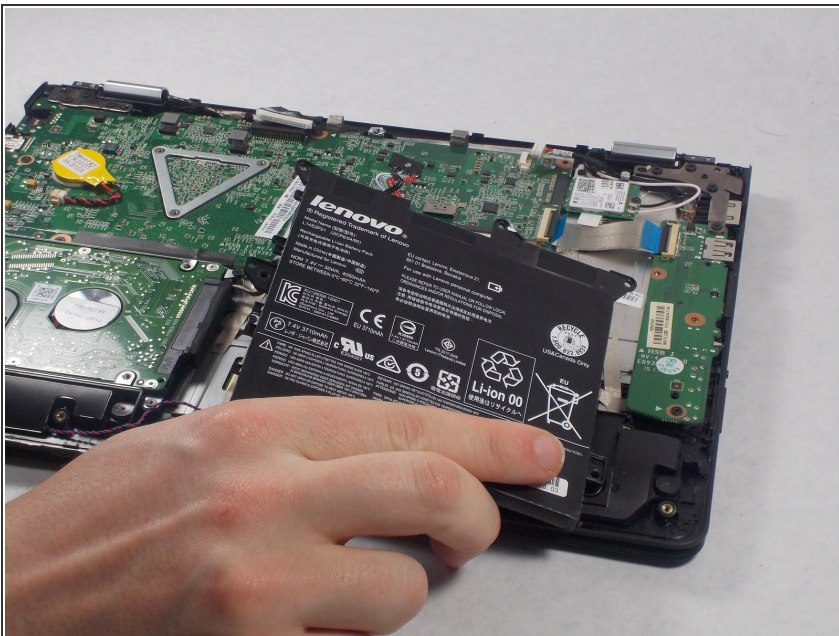


## Step 7



- Locate the multicolored power cables coming directly from the top of the battery and into the motherboard.
- Use a spudger to slide the power cables down and away from its port on the motherboard.

## Step 8



- Lift the battery out from the computer.

To reassemble your device, follow these instructions in reverse order.