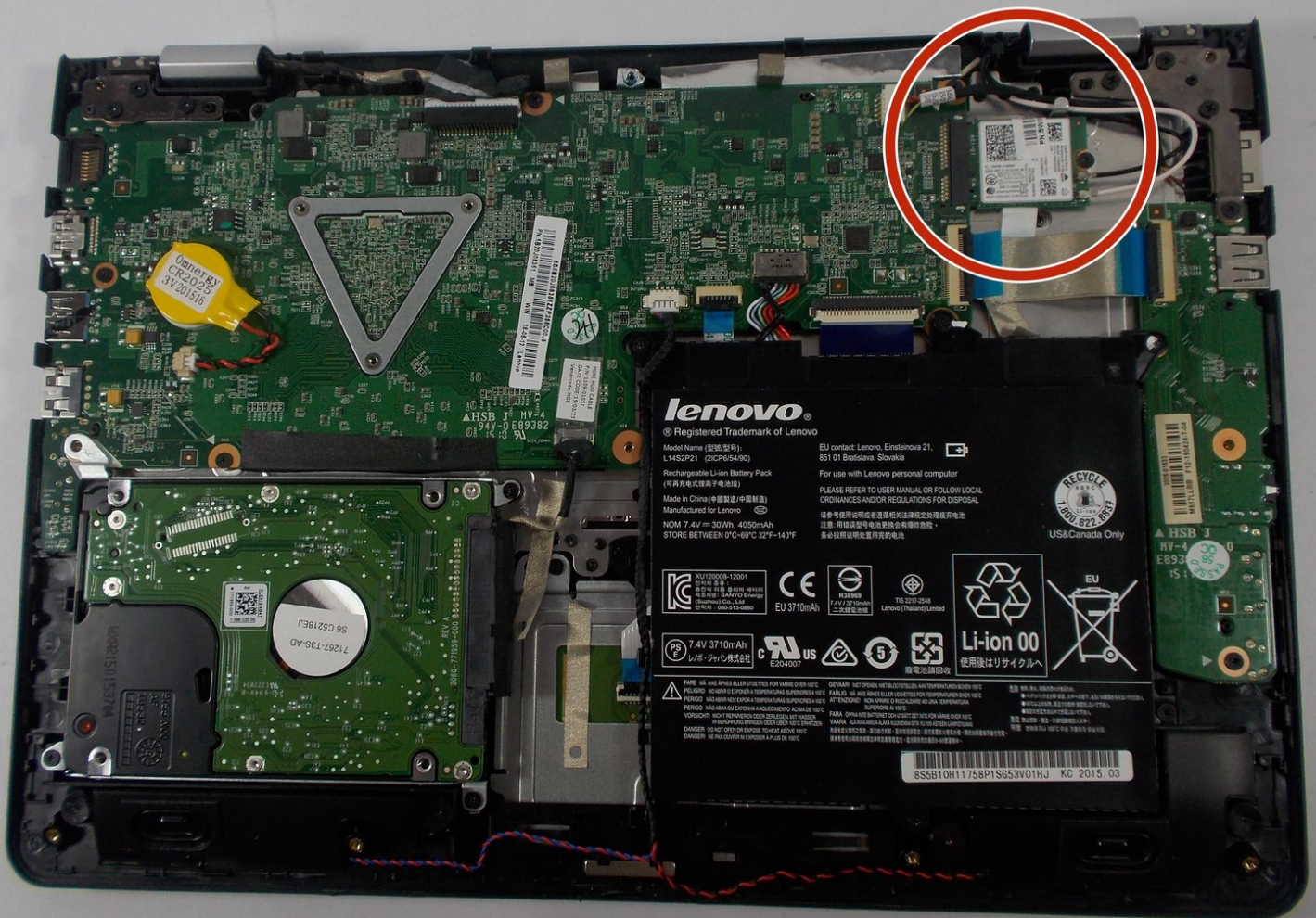




Lenovo Flex 3-1120 Network Card Replacement

Replace the network card in your Lenovo Flex 3-1120

Written By: Geoff Bentz



INTRODUCTION

Use this guide if your Lenovo Flex 3-1120 has entirely lost wireless functionality. The wireless network card is a simple and easy process.

TOOLS:

- [Phillips #0 Screwdriver](#) (1)
 - [iFixit Opening Tools](#) (1)
-

Step 1 — Bottom Panel



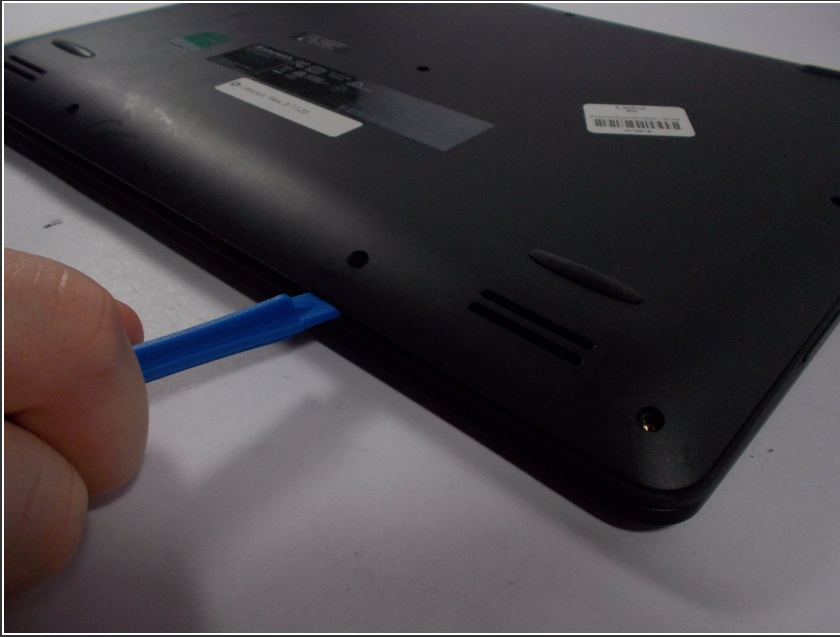
- Lay the computer down with the bottom panel facing up.

Step 2



- Locate the ten 6mm Phillips screws along the edges and in the center of the back panel.
- Remove all ten 6mm Phillips screws with a size 0 Phillips screwdriver.

Step 3



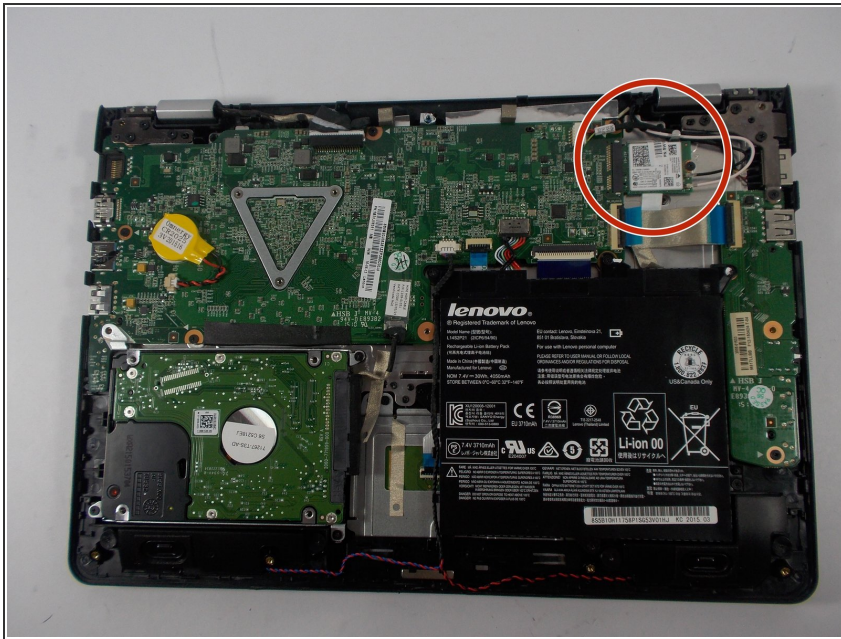
- Wedge the plastic opening tool into the small space under the back panel.
 - Use the plastic opening tool as a lever to separate the bottom panel from the computer.
 - Slide the tool along the edges of the computer until the bottom panel is completely separated.
- i** You may start prying the bottom panel on any edge.

Step 4



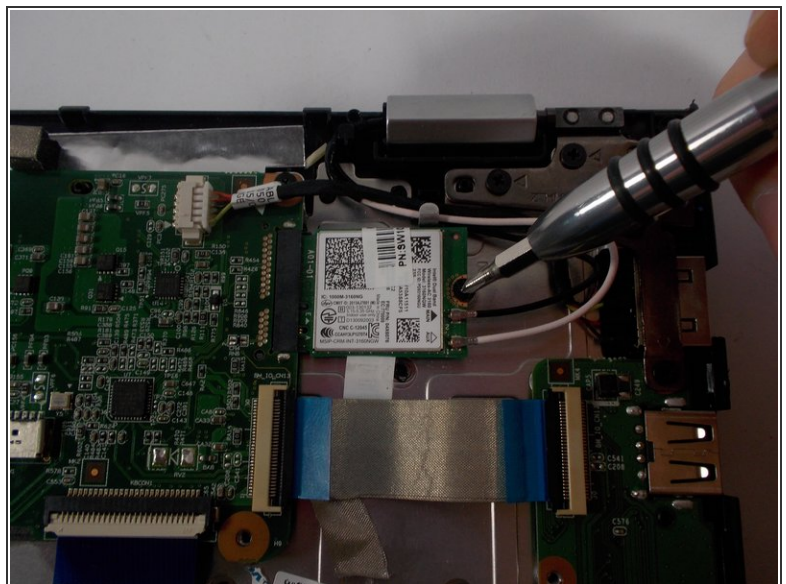
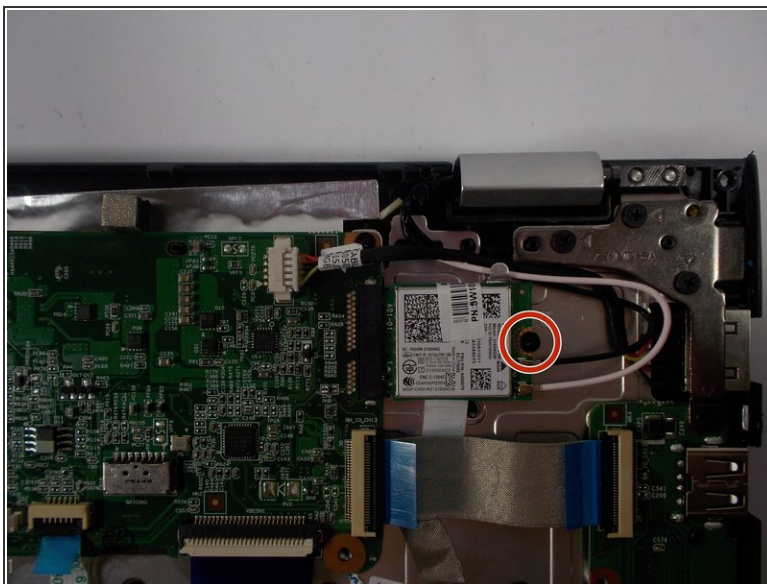
- Lift the bottom panel off of the computer.

Step 5 — Network Card



- Locate the network card on the top right of the computer.

Step 6



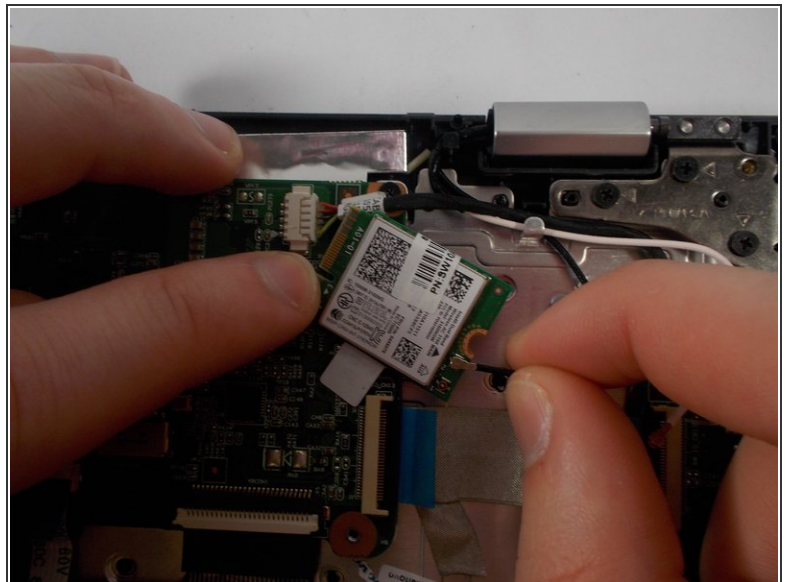
- Locate the single 3.5mm Phillips head screw on the right edge of the network card.
- Remove the single screw with a size 0 Phillips screwdriver.

Step 7



- Slide the network card out to the right to remove it from the motherboard.

Step 8



- Locate the black and white antenna wires that are connected to the right edge of the network card.
- Wiggle and pull upward on the two antenna cords connecting to the card to remove them.

To reassemble your device, follow these instructions in reverse order.