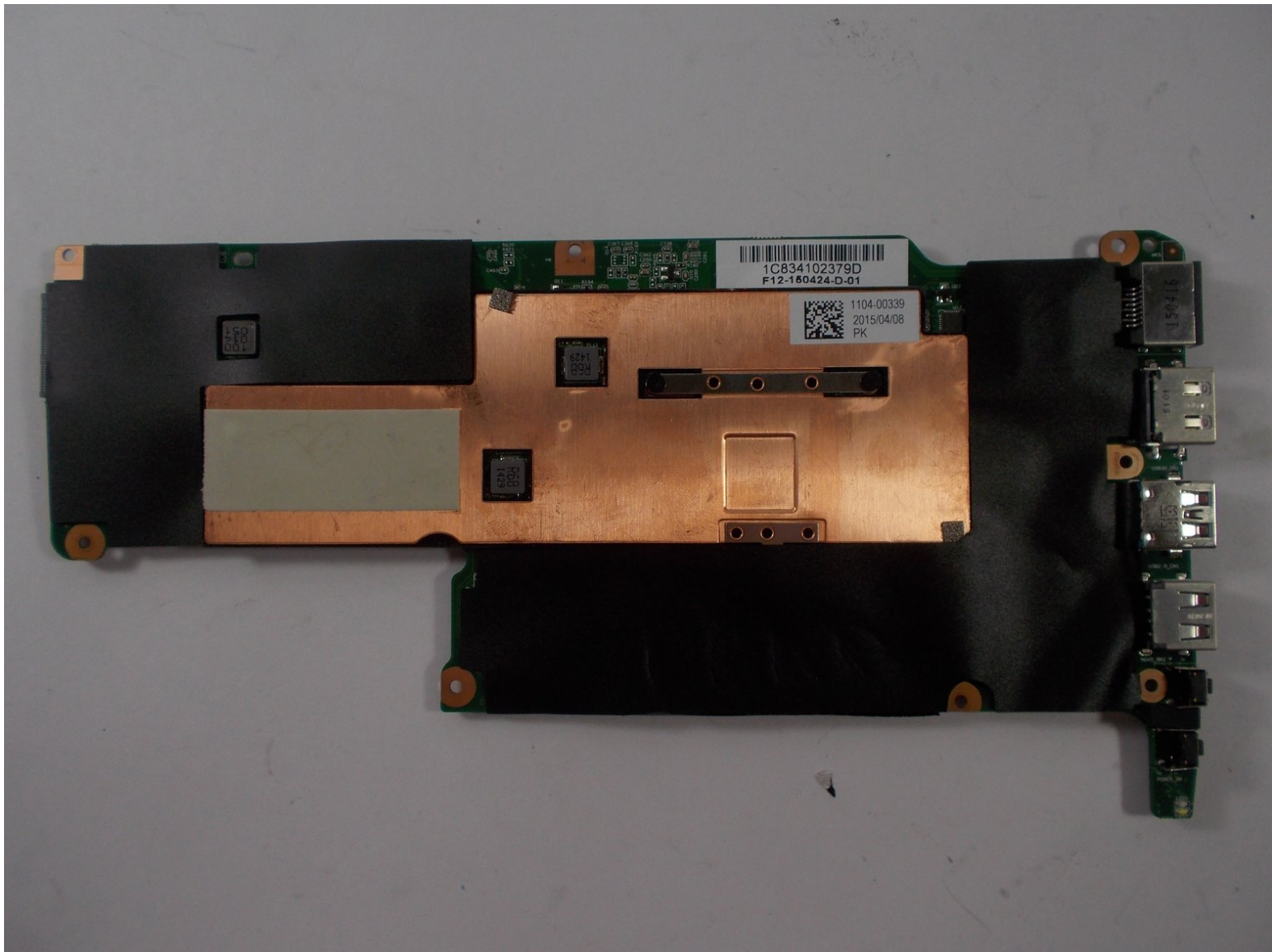




Lenovo Flex 3-1120 Thermal Compound Replacement

If you find that your computer is overheating then replacing the thermal compound in between the processor and the heat sink could improve temperatures.

Written By: patrick drew



INTRODUCTION

In this guide you will learn how to replace the thermal compound in your computer.



TOOLS:

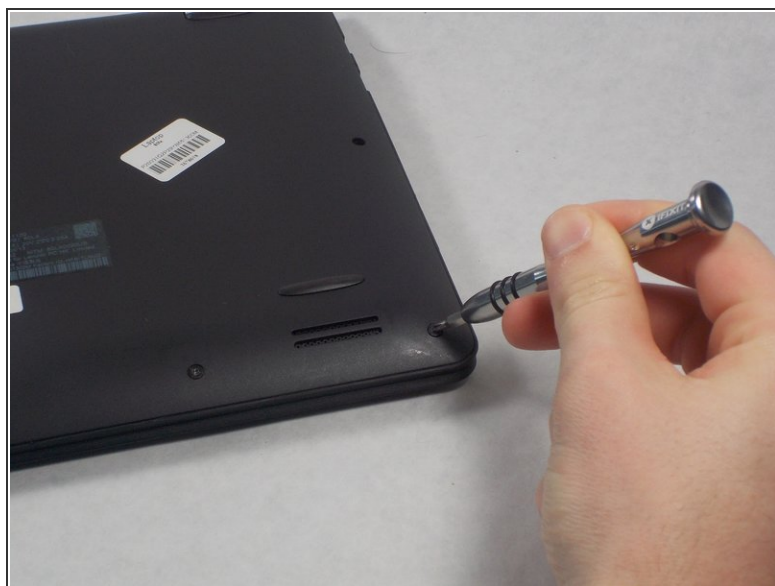
- [Phillips #0 Screwdriver](#) (1)
 - [iFixit Opening Tools](#) (1)
 - [Heavy-Duty Spudger](#) (1)
-

Step 1 — Bottom Panel



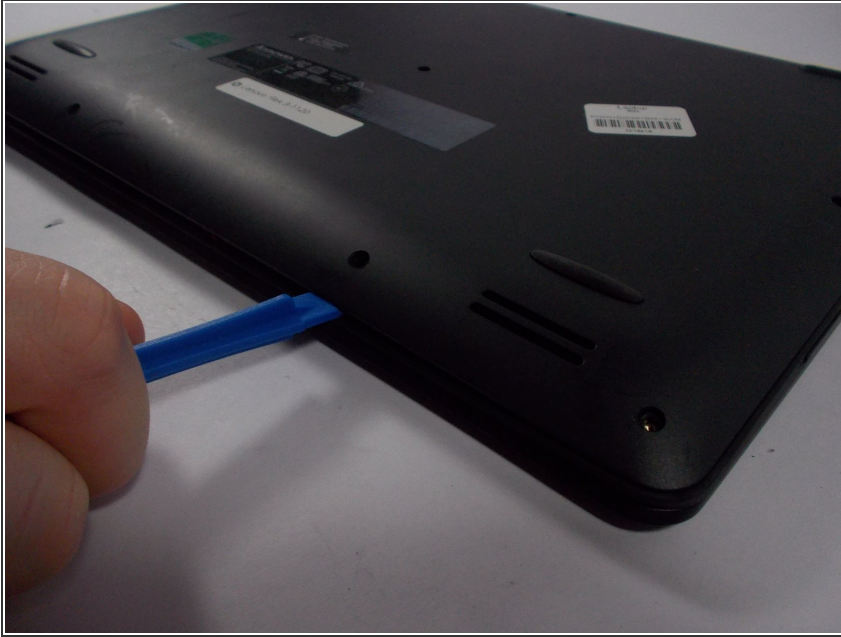
- Lay the computer down with the bottom panel facing up.

Step 2



- Locate the ten 6mm Phillips screws along the edges and in the center of the back panel.
- Remove all ten 6mm Phillips screws with a size 0 Phillips screwdriver.

Step 3



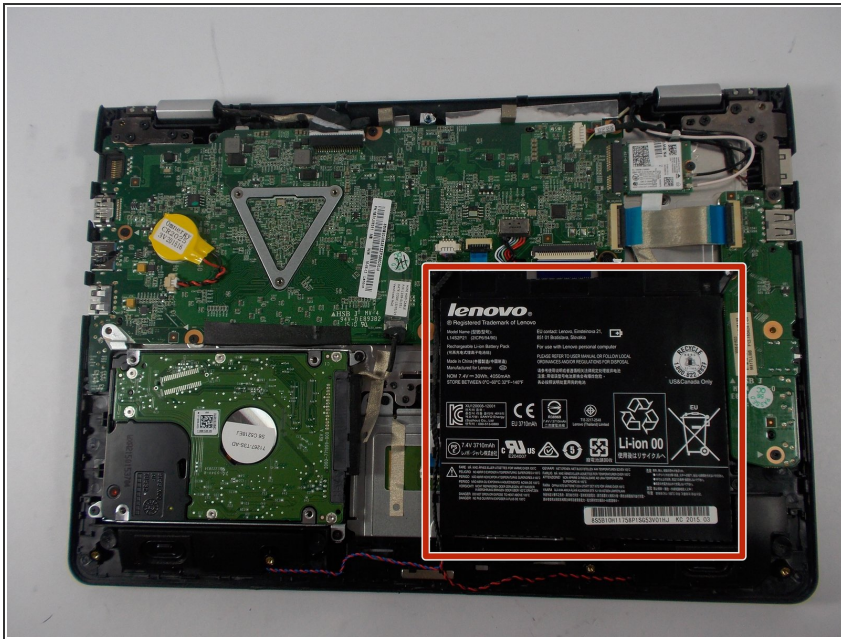
- Wedge the plastic opening tool into the small space under the back panel.
 - Use the plastic opening tool as a lever to separate the bottom panel from the computer.
 - Slide the tool along the edges of the computer until the bottom panel is completely separated.
- i** You may start prying the bottom panel on any edge.

Step 4



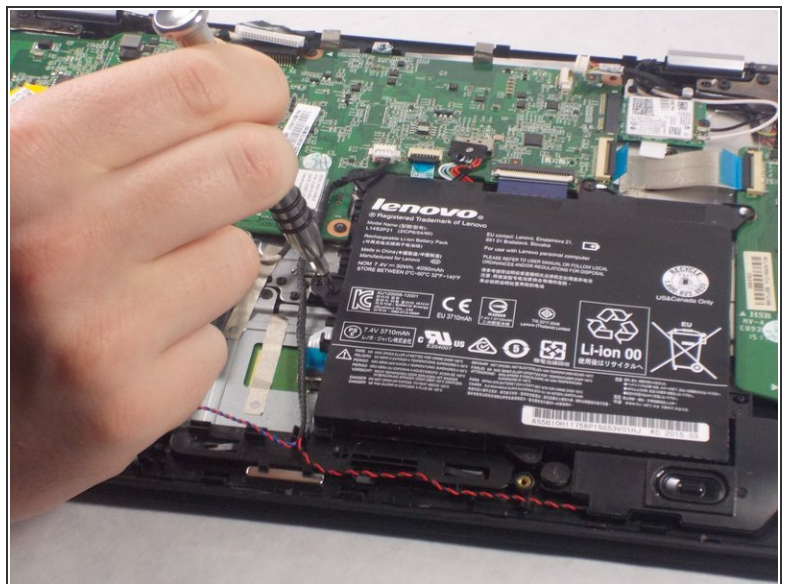
- Lift the bottom panel off of the computer.

Step 5 — Battery



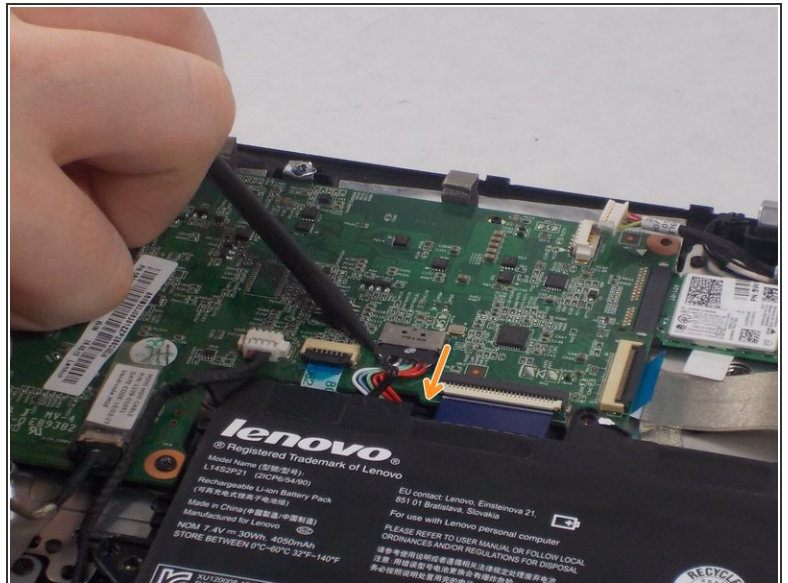
- Locate the black battery on the bottom right of the computer.

Step 6



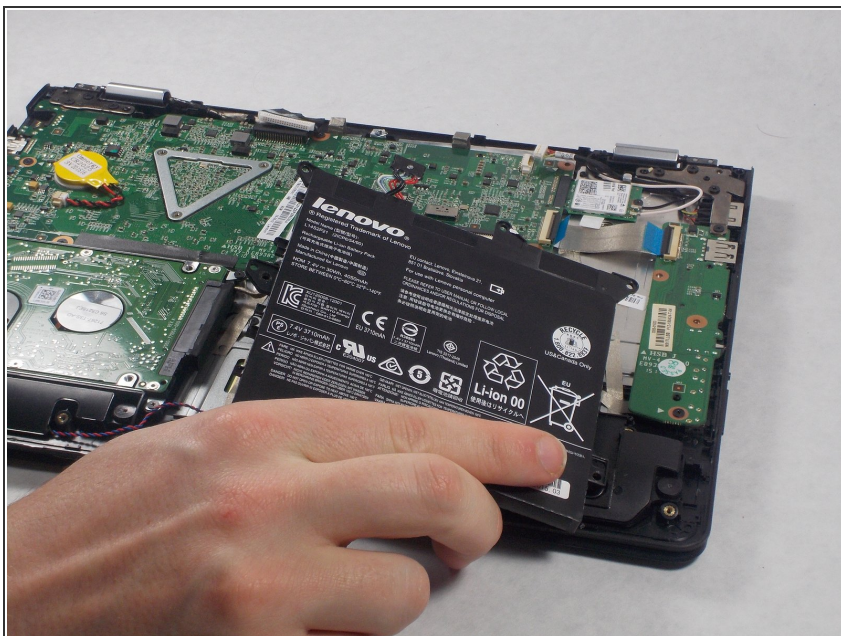
- Locate the six 3.5mm Phillips head screws along the edges of the battery.
- Remove all six of the screws using a size 0 Phillips screwdriver.

Step 7



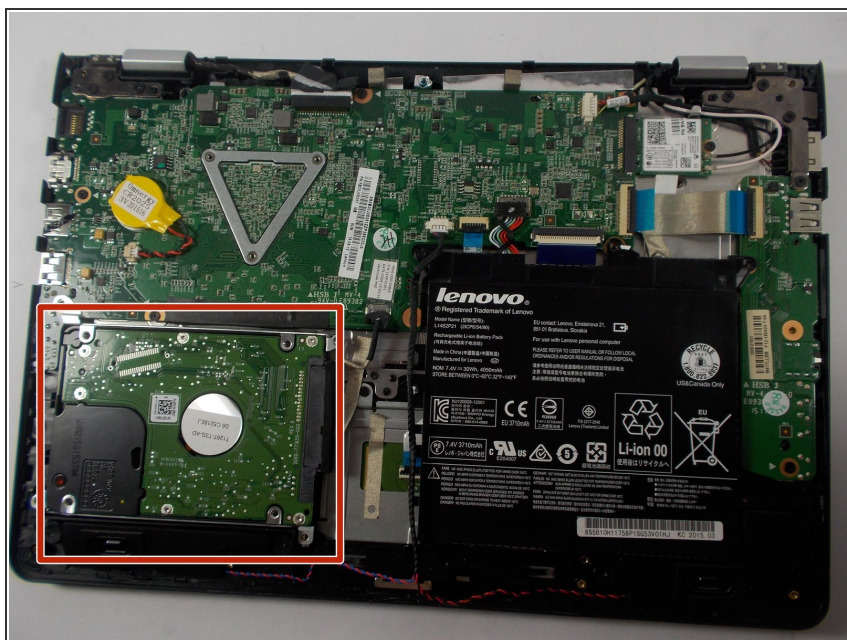
- Locate the multicolored power cables coming directly from the top of the battery and into the motherboard.
- Use a spudger to slide the power cables down and away from its port on the motherboard.

Step 8



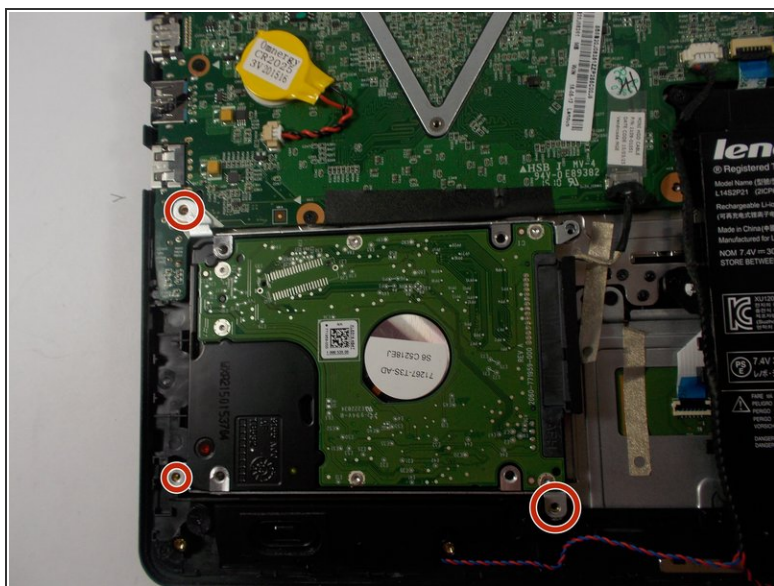
- Lift the battery out from the computer.

Step 9 — Hard Drive



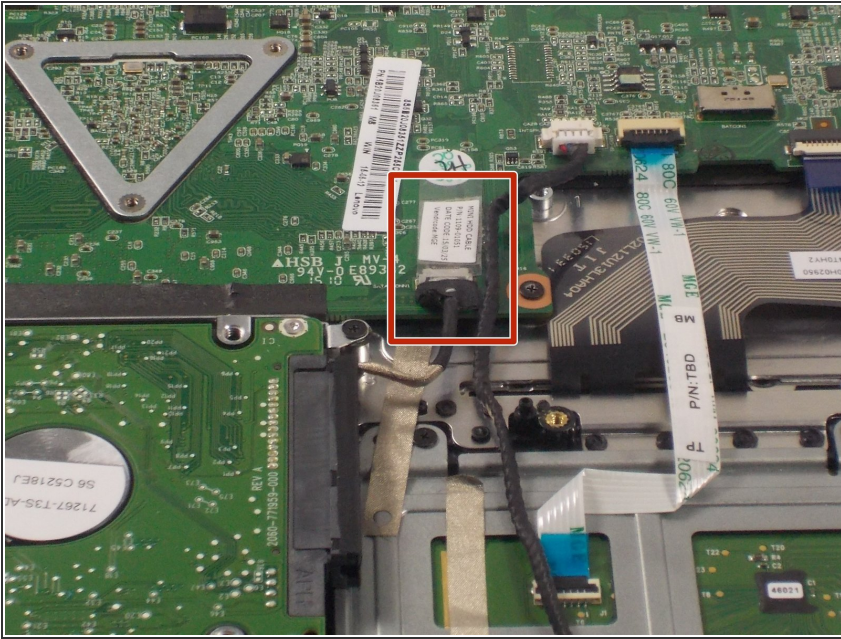
- Locate the hard drive in the bottom left of your computer.

Step 10



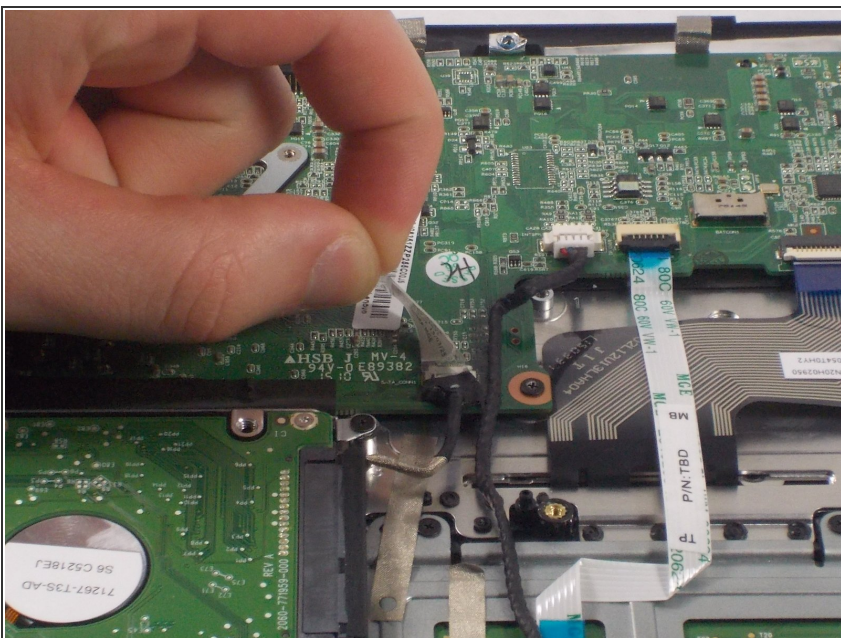
- Locate the three 3.5mm Phillips screws on the corners of the hard drive.
- Remove the three screws with a size 0 Phillips screwdriver.

Step 11



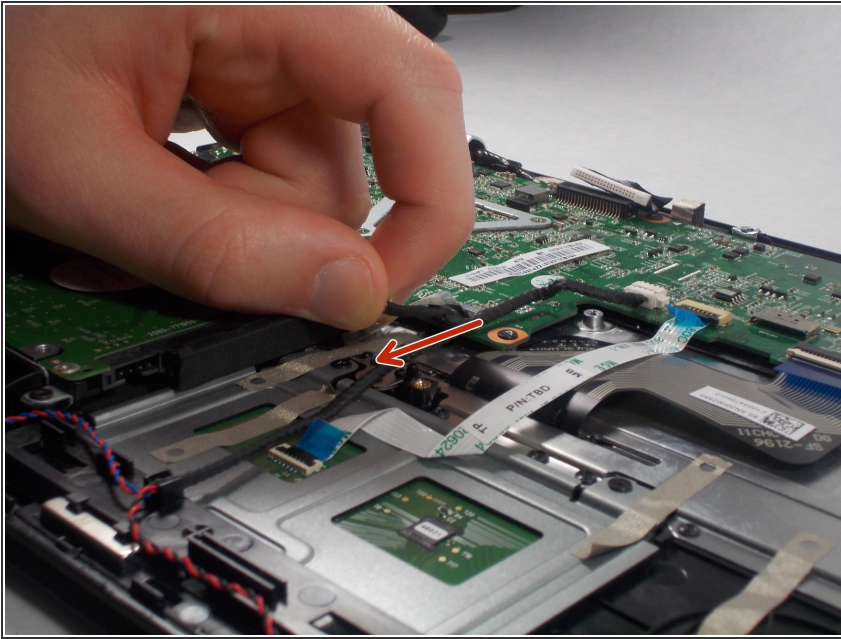
- Follow the wire out from the right side of the hard drive to locate where the hard drive connects to the motherboard.

Step 12



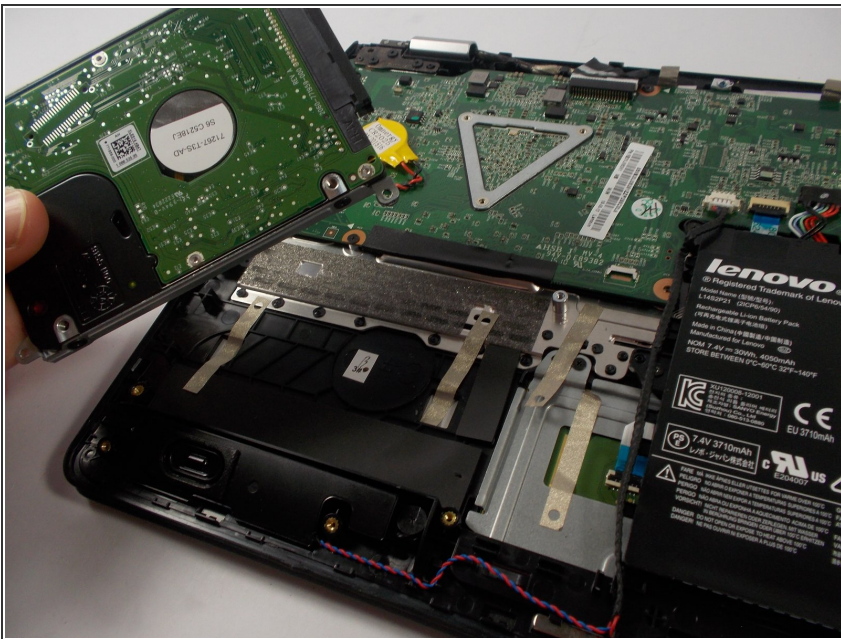
- Lift off the strip of tape securing the wire down to the computer.

Step 13



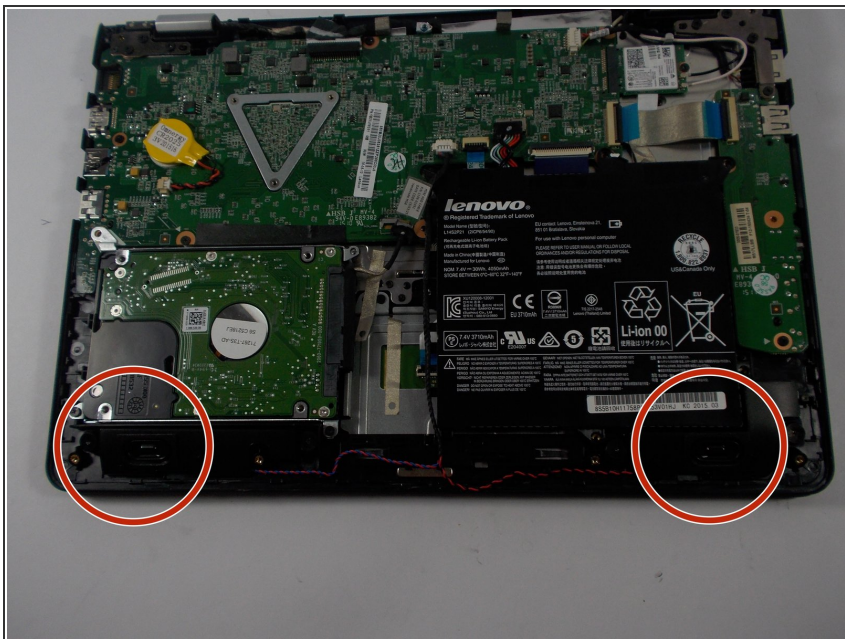
- Pull the connector out of its port on the motherboard.

Step 14



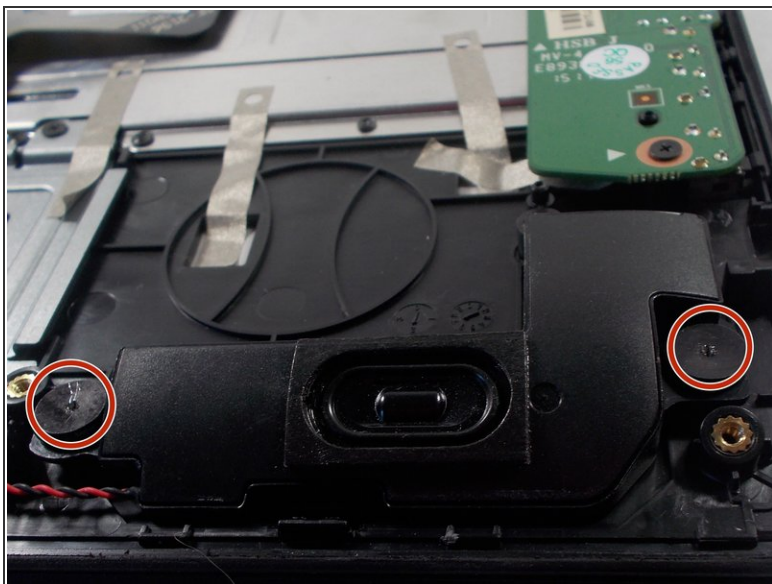
- Lift the hard drive out from the computer.

Step 15 — Speakers



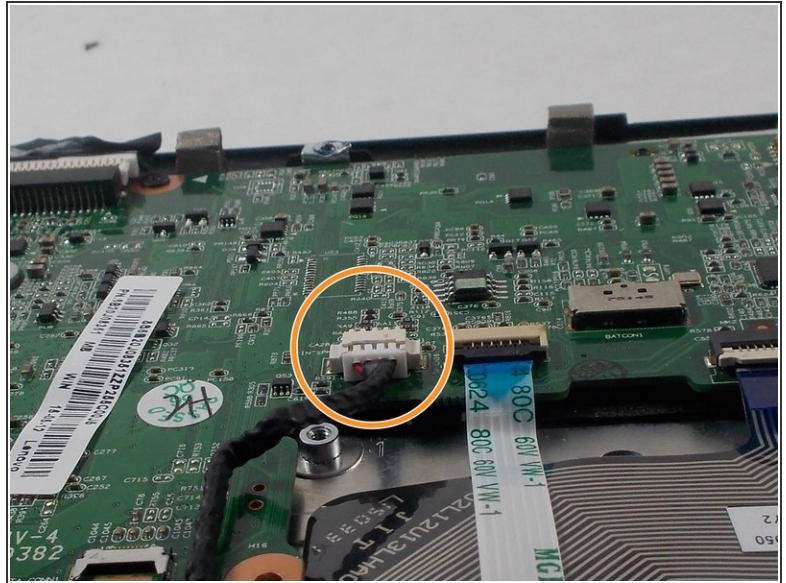
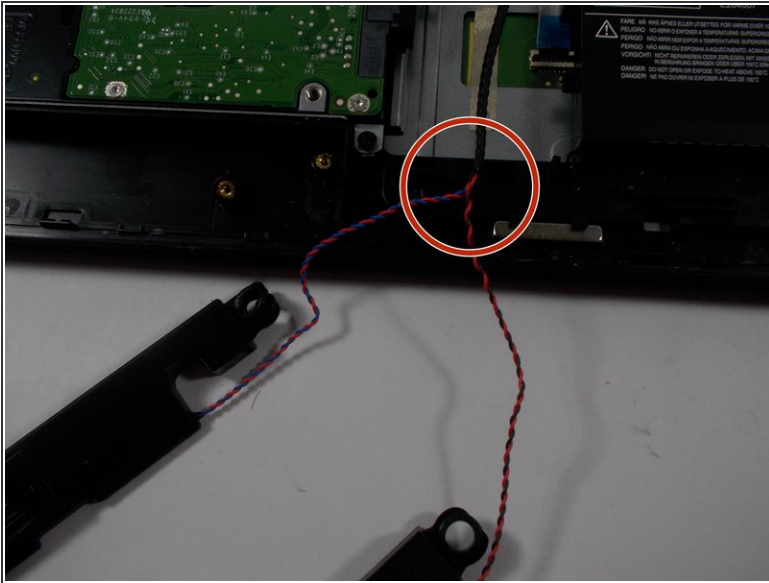
- Locate the speakers at the bottom left and right corners of the computer.

Step 16



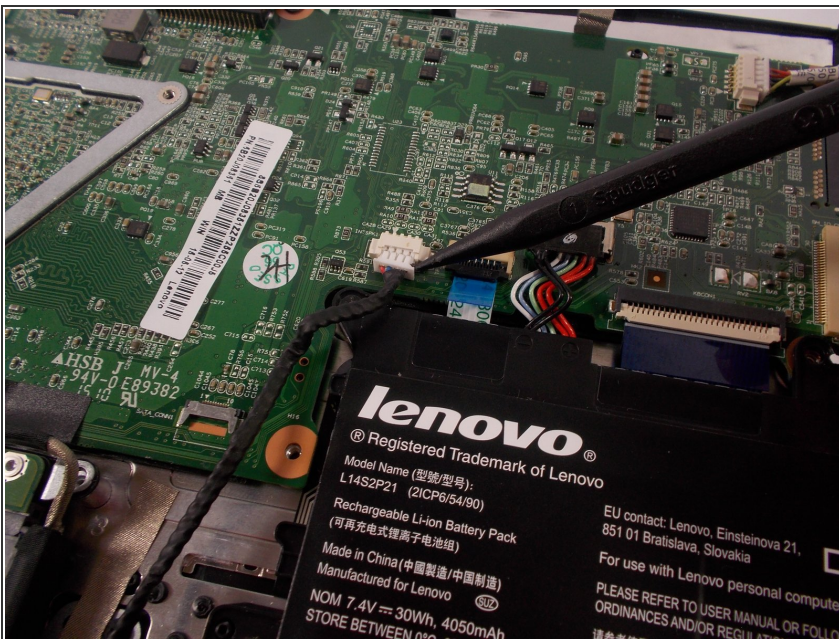
- Locate the two 1mm Phillips head screws on both speakers.
- Remove both screws from each speaker.

Step 17



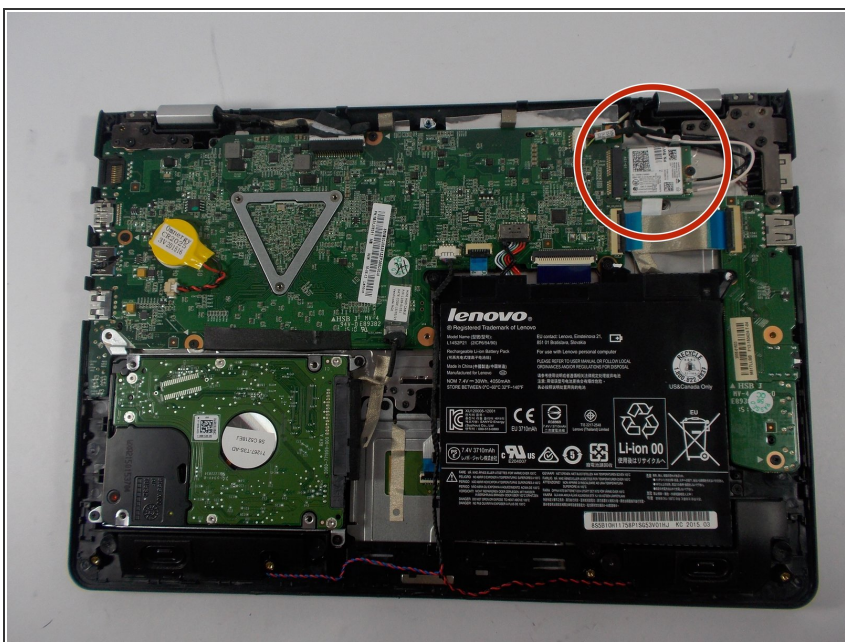
- Locate where the two speaker wires join at the center of the computer.
- Follow the wires directly upward to where they connect into the motherboard.

Step 18



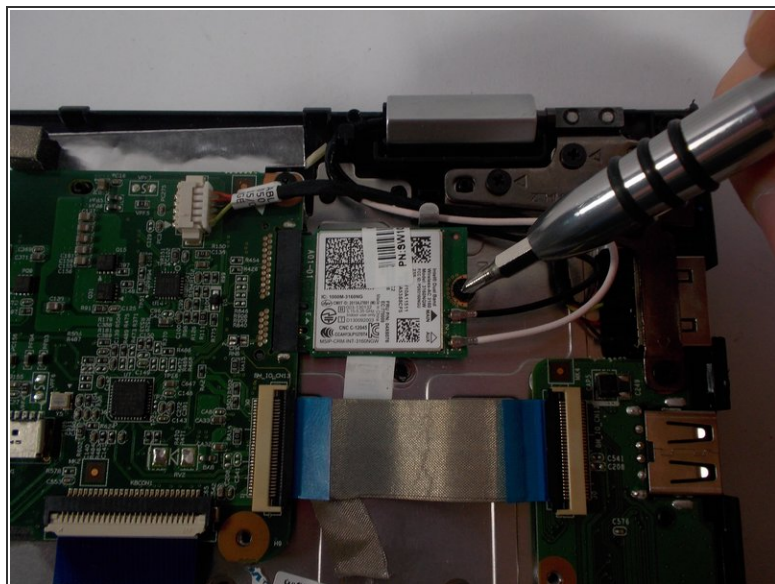
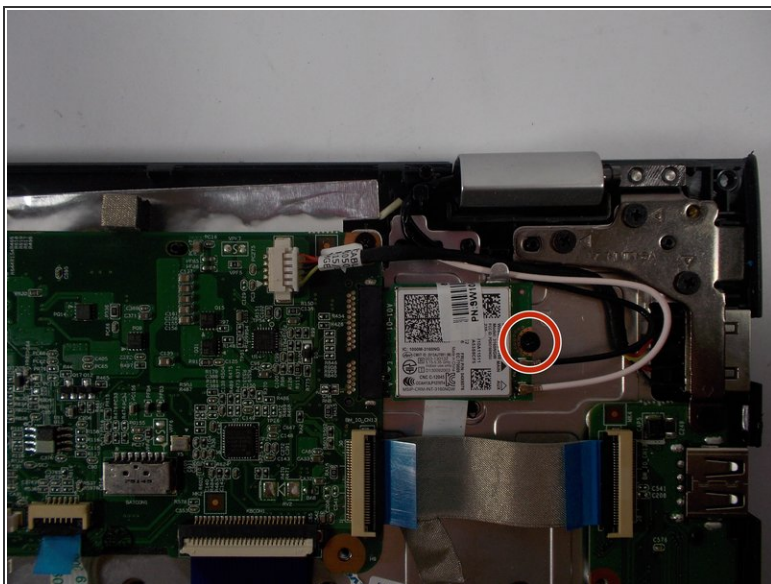
- Using the spudger, pull the wire down and away from the motherboard to disconnect it.

Step 19 — Network Card



- Locate the network card on the top right of the computer.

Step 20



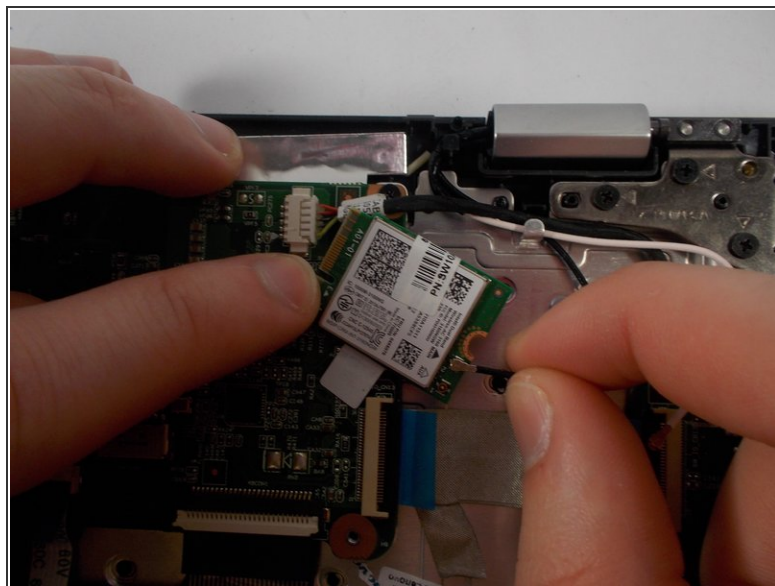
- Locate the single 3.5mm Phillips head screw on the right edge of the network card.
- Remove the single screw with a size 0 Phillips screwdriver.

Step 21



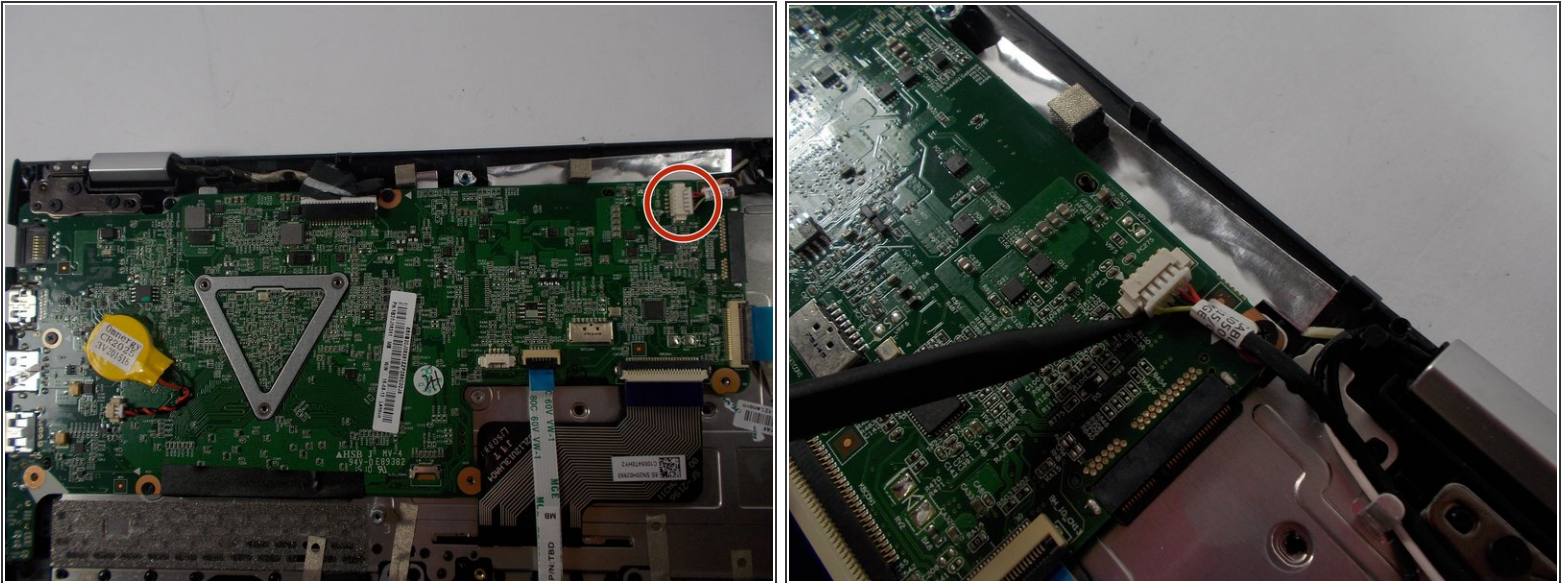
- Slide the network card out to the right to remove it from the motherboard.

Step 22



- Locate the black and white antenna wires that are connected to the right edge of the network card.
- Wiggle and pull upward on the two antenna cords connecting to the card to remove them.

Step 23 — Motherboard



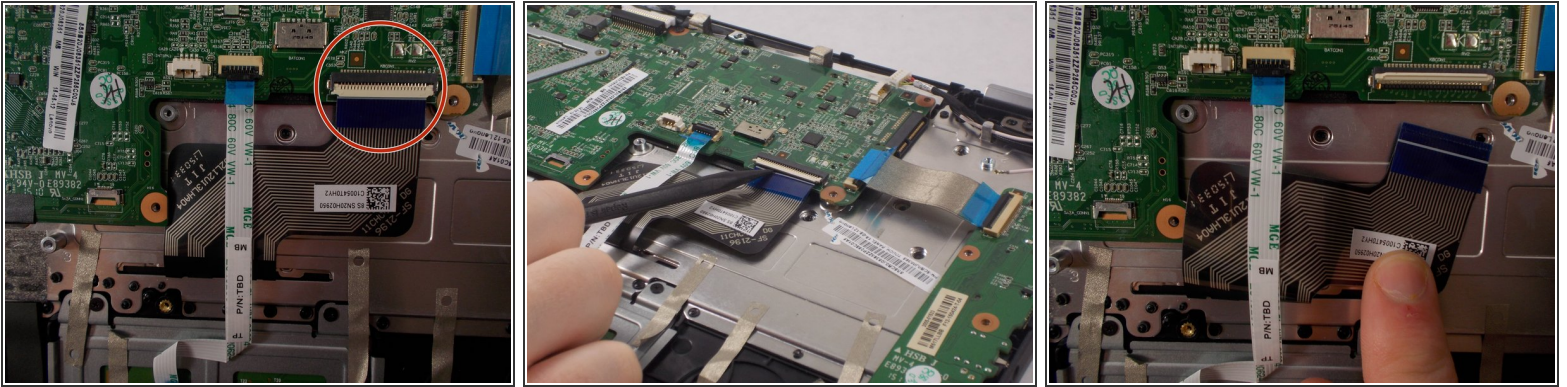
- Locate the power input cable on the top right corner of the motherboard.
- Remove the power input cable by gently sliding each side of the cable out of its port. Alternate between the left and right sides of the cable until it disconnects.

Step 24



- Locate the ribbon cable with a blue tab on it. The cable is connected to the right edge of the motherboard.
- Lift up the black latch with the spudger.
- Pull on the blue tab to the left to remove the cable.

Step 25



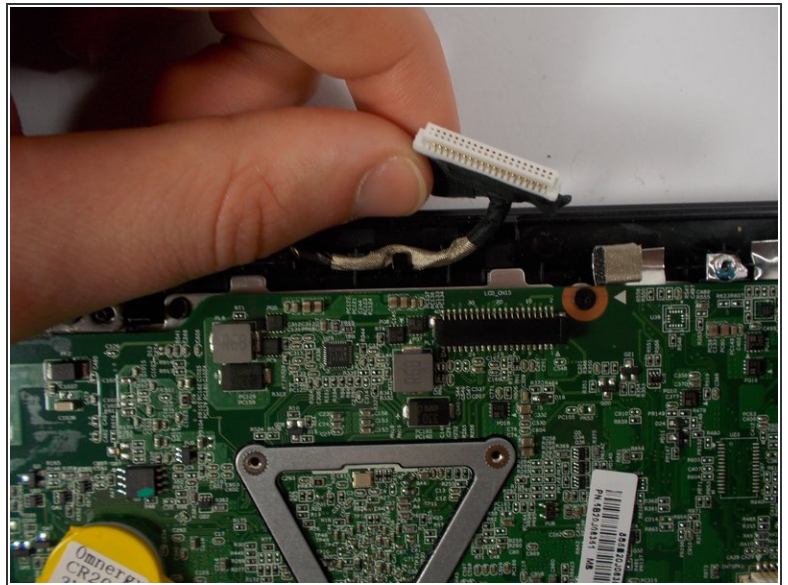
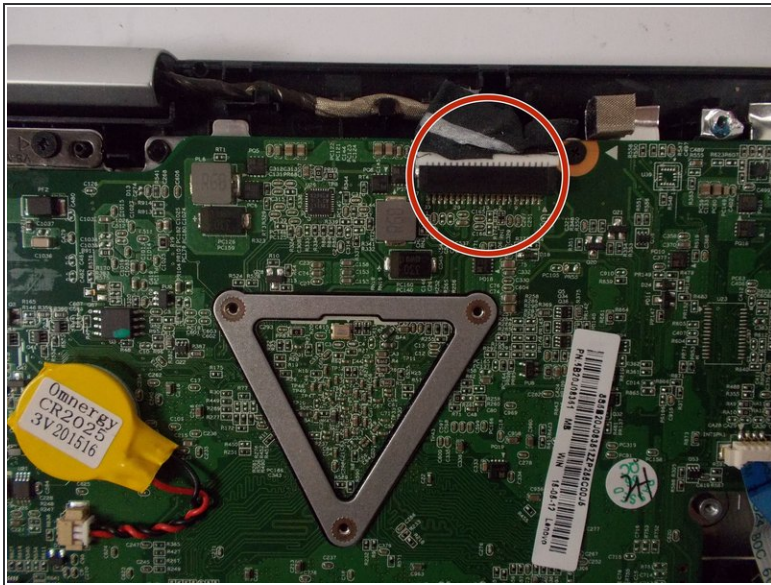
- Locate the black ribbon cable on the bottom right of the motherboard.
- Lift the white door on the end of the cable that connects to the motherboard.
- Slide the cable down to disconnect it from the motherboard.

Step 26



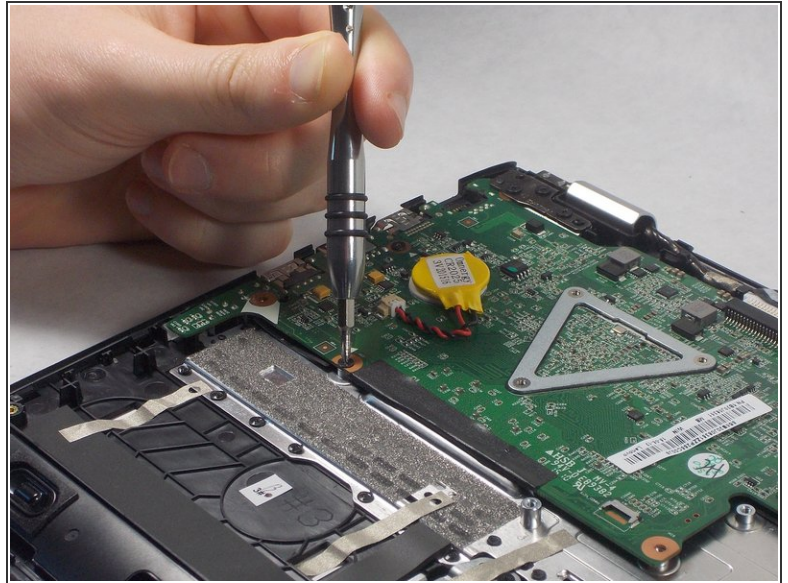
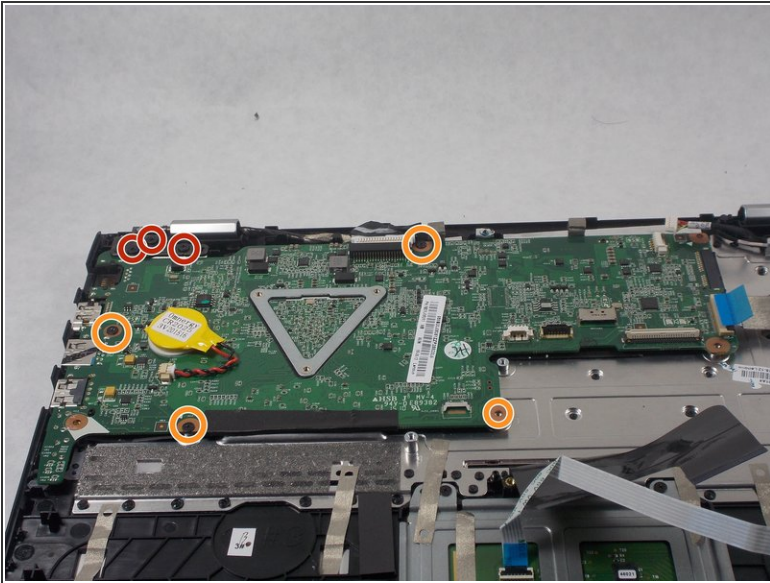
- Locate the white ribbon cable with a blue tab to the left of the black ribbon cable.
- Lift up the black latch holding the cable in to the motherboard.
- Pull the cable out of its port on the motherboard.

Step 27



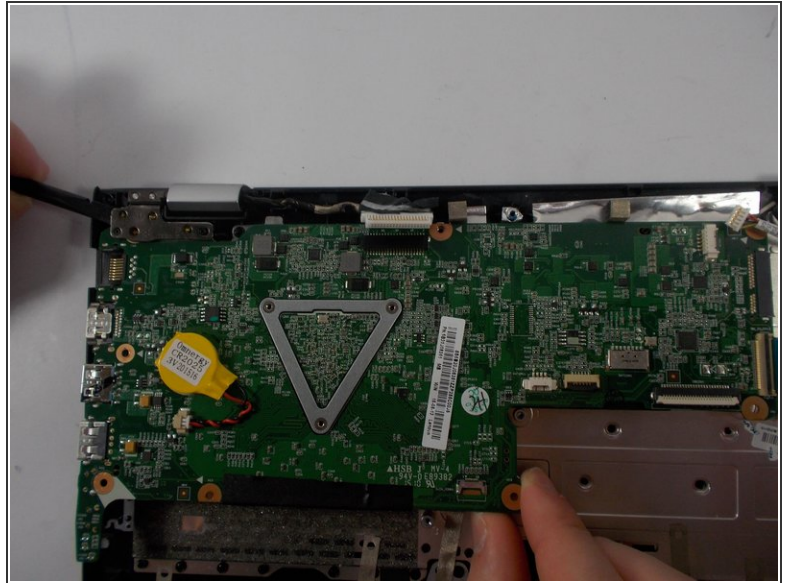
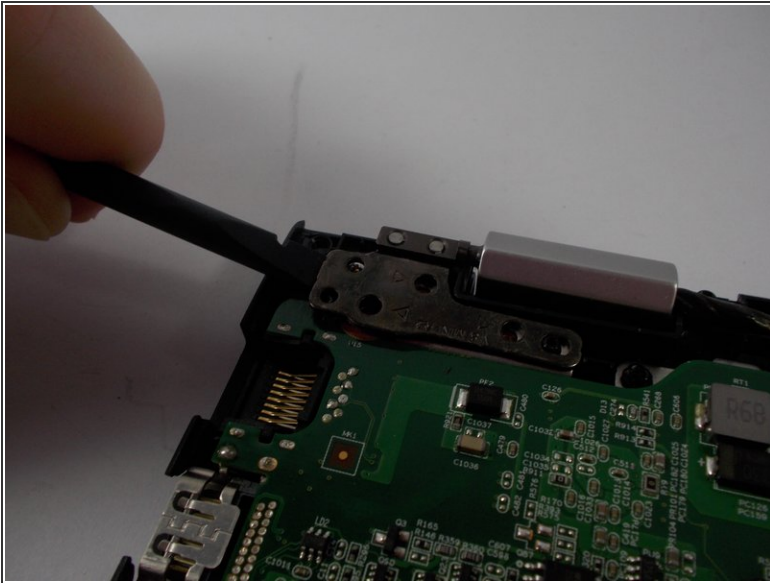
- Locate the white connector on the top edge of the motherboard.
 - Simply pull the wire away from the motherboard by hand to disconnect it.
- i** A spudger may also be used to remove the cable, but it is not necessary.

Step 28



- Locate the three 4.5mm screws that are securing the bracket in the top left corner of the motherboard.
- Locate the four 3.5mm screws holding the motherboard in place.
- Remove all of the screws with a size 0 Phillips screwdriver.

Step 29



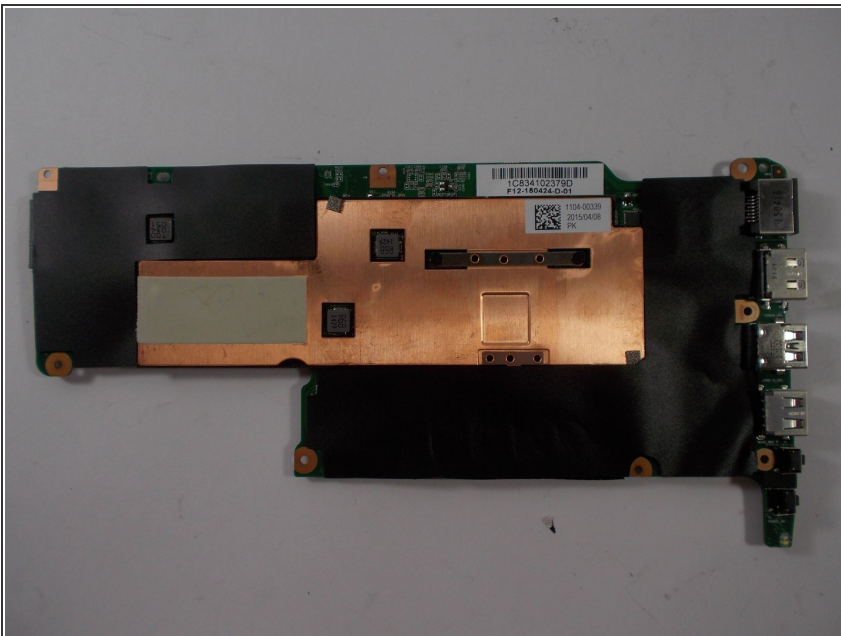
- Locate the metal bracket attaching the motherboard to the top-left of the computer.
 - Raise the metal bracket by prying it up and away from the motherboard.
 - Pull the motherboard away from the bracket to separate them.
- i** These steps may need to be performed simultaneously in order to remove the motherboard from the bracket. The parts can easily stay stuck.
- !** Do not pull the motherboard with too much force. The motherboard could be broken if handled too poorly.

Step 30



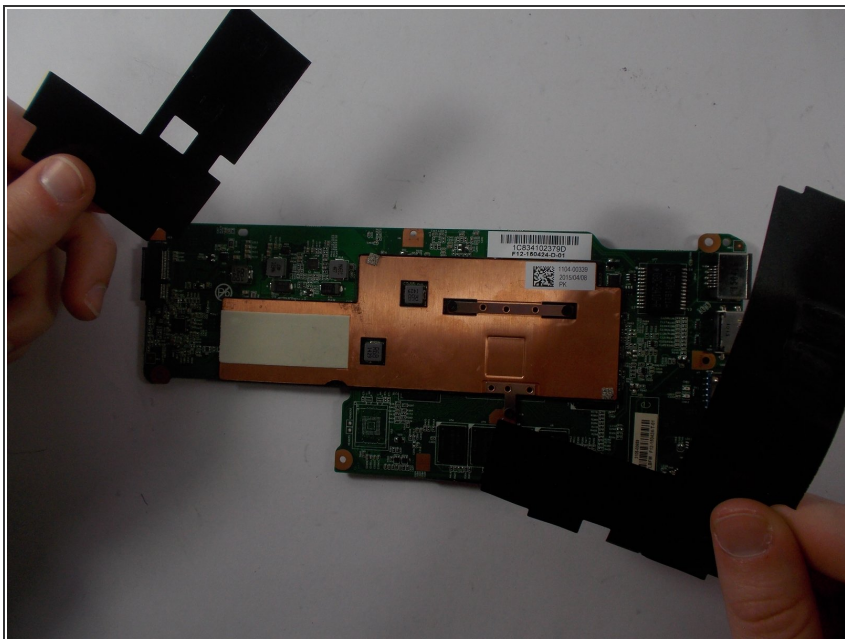
- Lift the motherboard out from the computer.

Step 31 — Thermal Compound



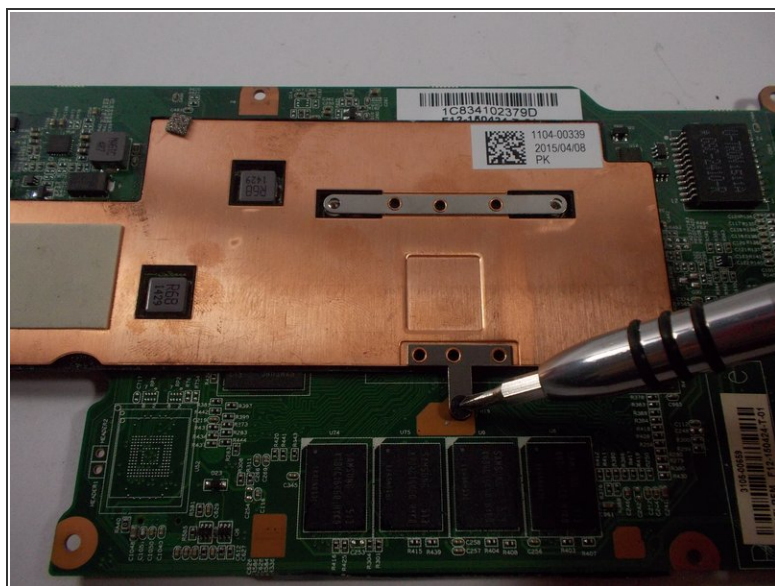
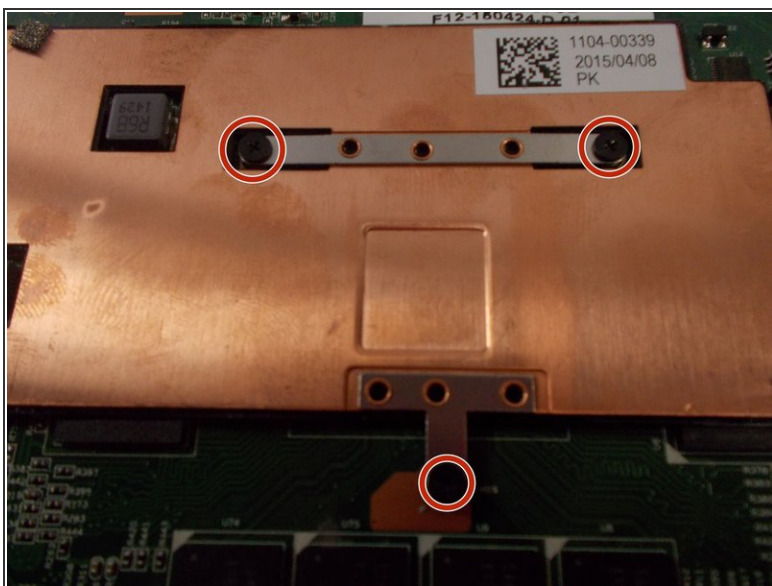
- Position the motherboard with the black side facing up.

Step 32



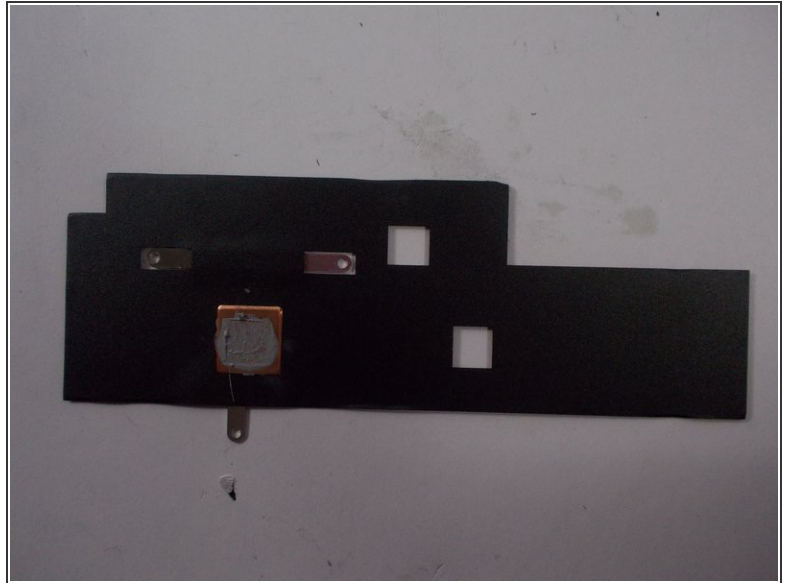
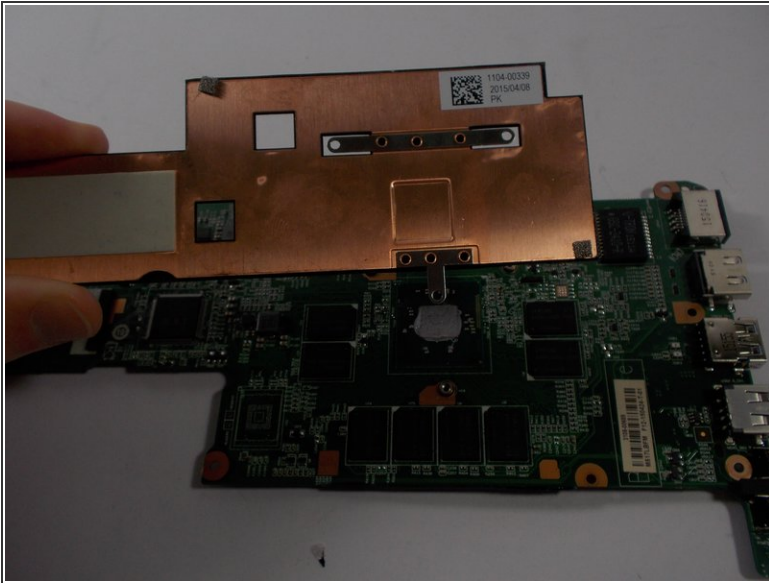
- Carefully remove the black tape from the motherboard.

Step 33



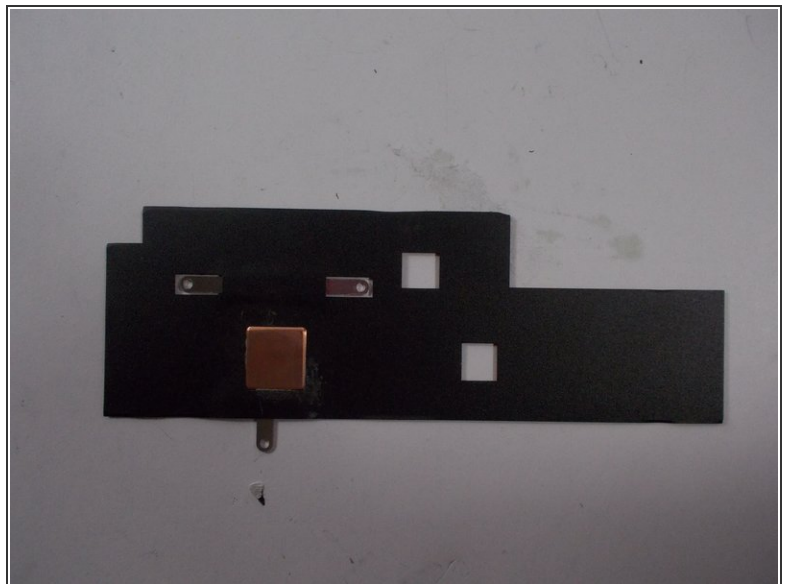
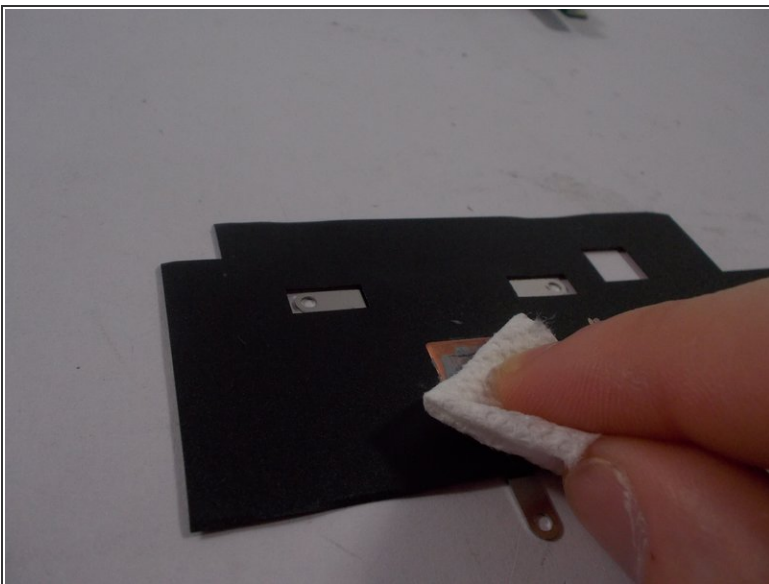
- Locate the three 2mm screws on the bracket holding down the heat sink.
- Using a size 0 Phillips screwdriver, remove the three 2mm screws.

Step 34



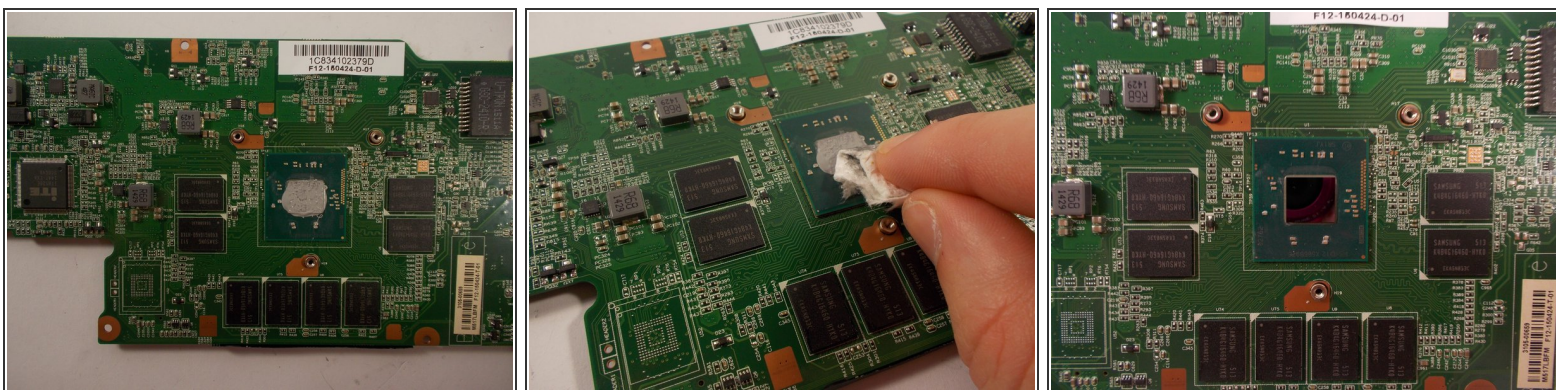
- Lift the copper colored heat sink away from the motherboard.
- Place the heat sink down elsewhere with the black underside facing up.

Step 35



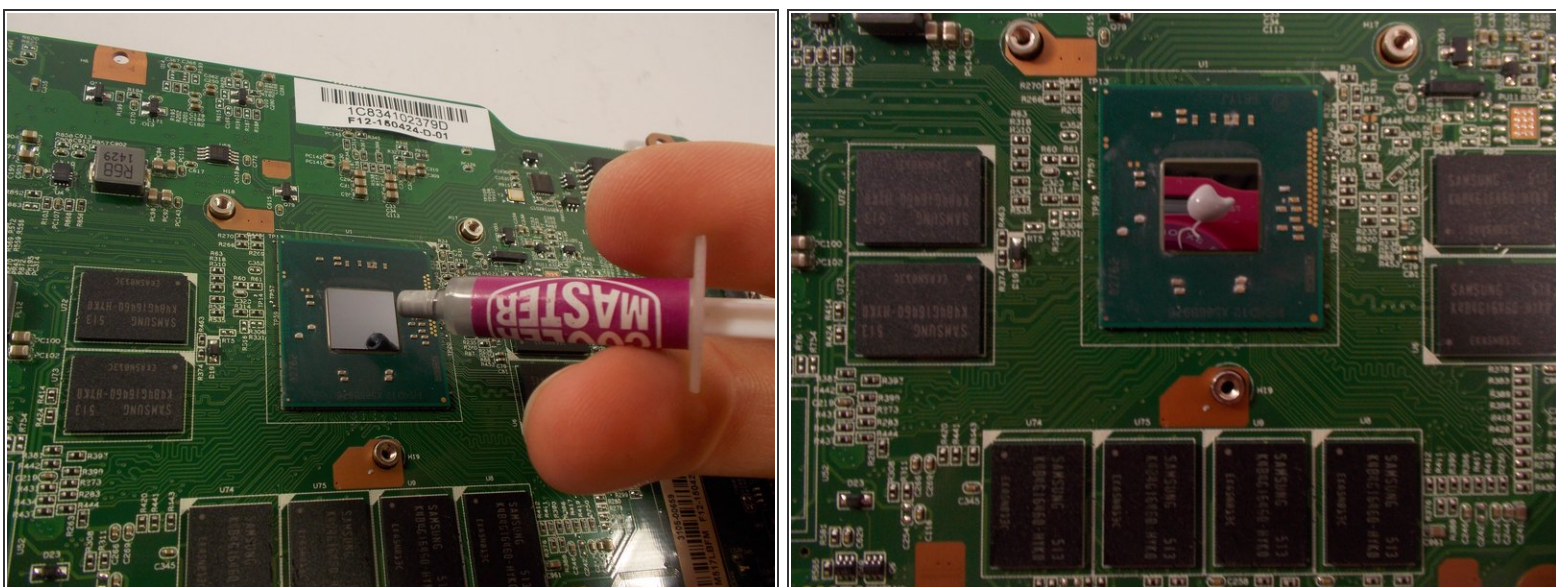
- Wipe the residual paste off of the heat sink using a clean cloth.

Step 36



- Wipe the residual paste off of the processor on the motherboard with a clean cloth.

Step 37



- Apply a small drop of thermal compound to the processor.
- ⓘ You don't need to use much paste, as it will spread out when you re-attach the heat sink.

To reassemble your device, follow these instructions in reverse order.