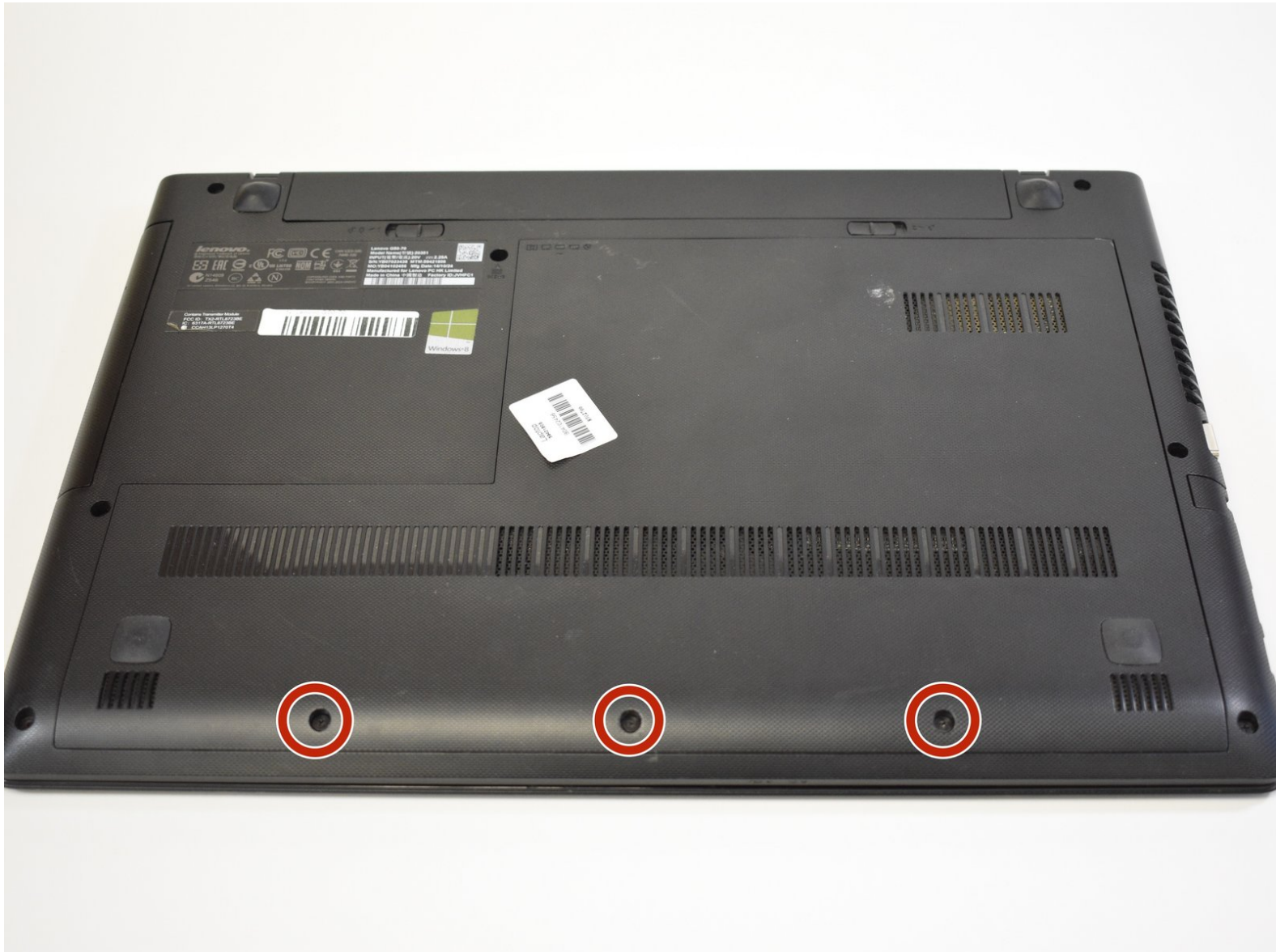




# Lenovo G50-70 Back Access Panel Replacement

To access internals of the Lenovo G50-70, the back access panel must be removed.

Written By: Caleb DesJardins



---

## INTRODUCTION

Many of the replacement guides for this model will be internal parts that are accessed by first removing the back access panel. Removing this part is very simple; the only tool needed is a small Philips screwdriver to remove three screws. Removing this part gives access necessary for future guides.



### TOOLS:

- [Phillips #0 Screwdriver](#) (1)
-

## Step 1 — Back Access Panel



- Remove the three 6mm Phillips #0 screws holding the back access panel on.

## Step 2



- Slide the cover toward you to unlatch it.
- The edge of the panel will slide away from the laptop so it can be lifted.

To reassemble your device, follow these instructions in reverse order.