



Lenovo G50-80 80E5 Hard Drive Replacement

This guide will instruct readers how to disassemble and replace the hard drive on the Lenovo G50-80 80E5

Written By: Brett Bousquet



INTRODUCTION

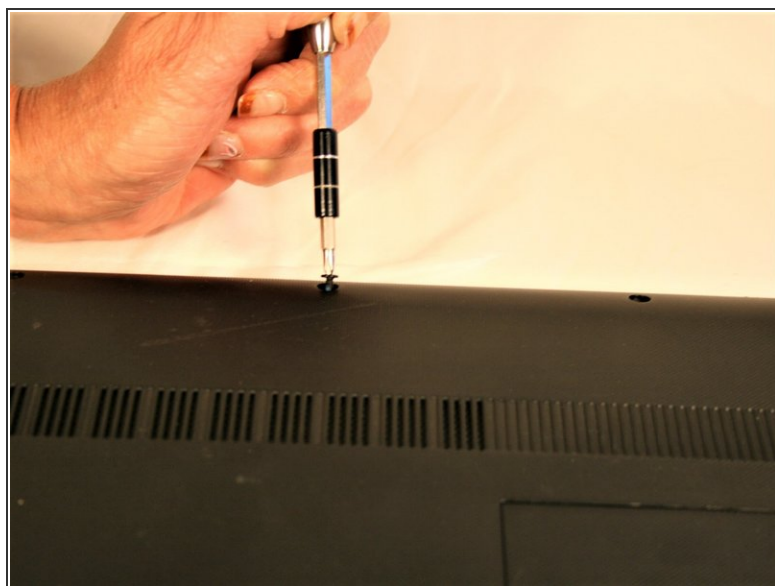
You will learn how to remove the hard drive from your Lenovo G50-80 80E5 laptop for replacement.



TOOLS:

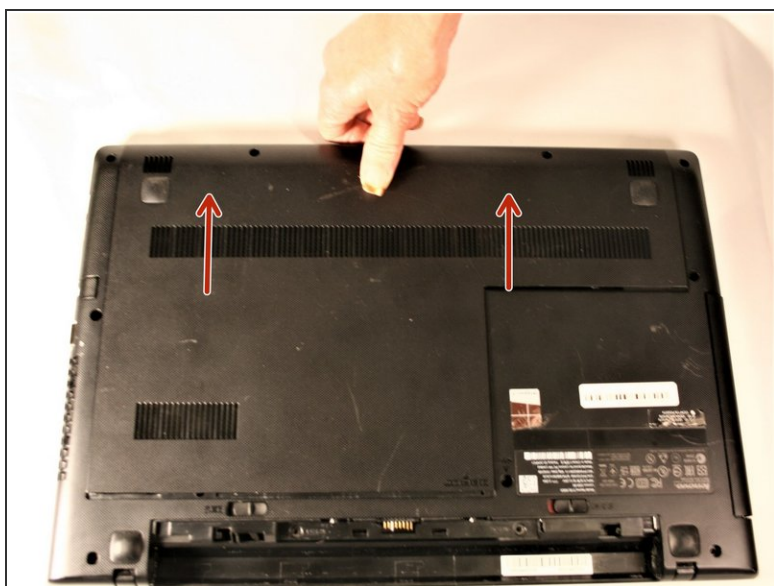
- [Phillips #00 Screwdriver](#) (1)
-

Step 1 — Bottom Access Panel



- Locate and remove the 3 screws securing the outer cover of the laptop.

Step 2



- slide cover away from hinges and lift panel off.

Step 3 — Hard Drive



- Locate the 4 #00-5.5 mm Phillips screws securing the hard drive into the laptop.
- Remove the 4 screws with the #00 Phillips screwdriver

Step 4



- With the screws removed, slide the hard drive away from the center of the laptop and remove it.

To reassemble your device, follow these instructions in reverse order.