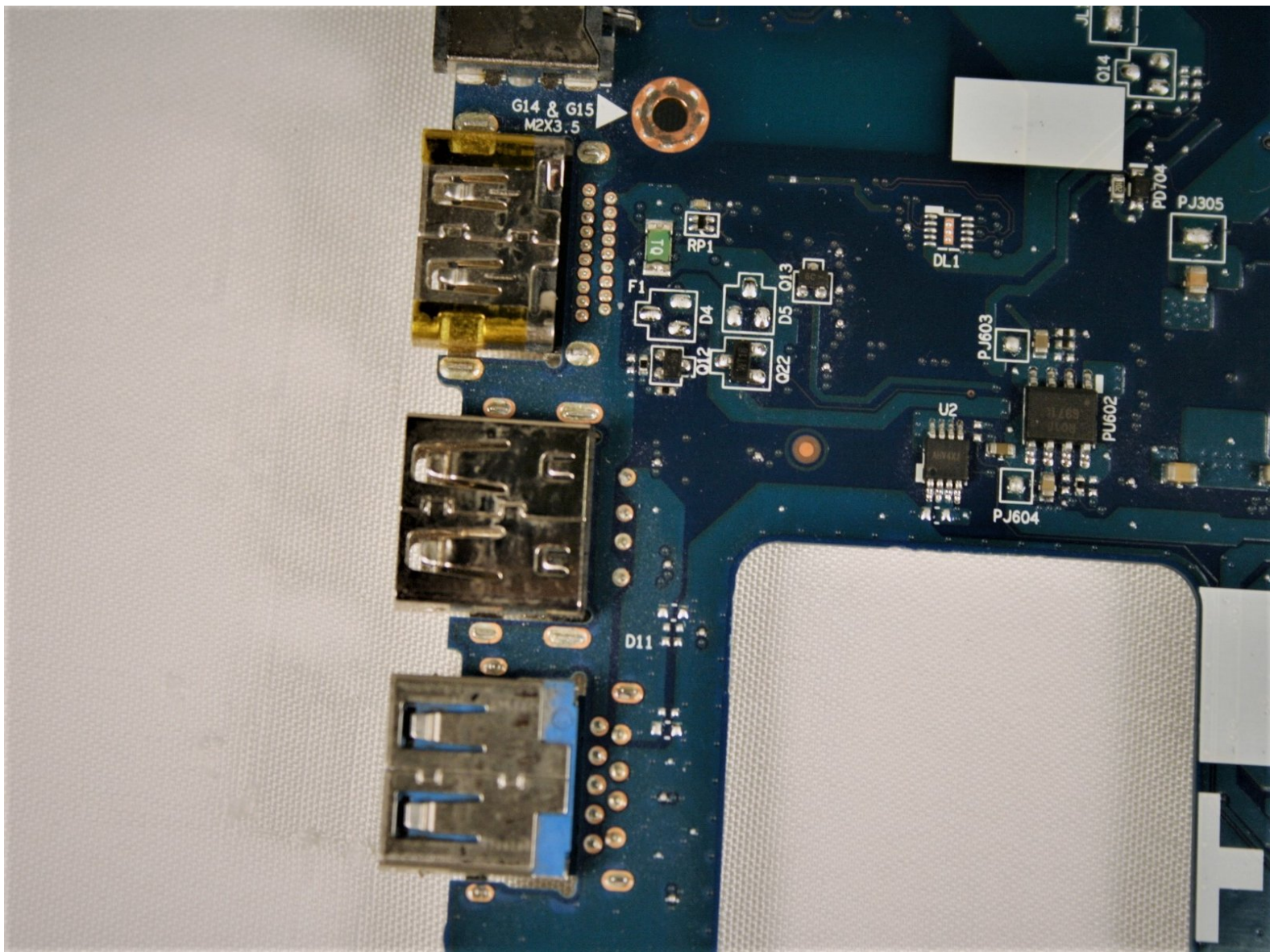




Lenovo G50-80 80E5 USB Port Replacement

Replacement of a broken USB port.

Written By: Victor



INTRODUCTION

The laptop will need to be completely disassembled and the motherboard pulled before removal of a USB port can begin.

TOOLS:

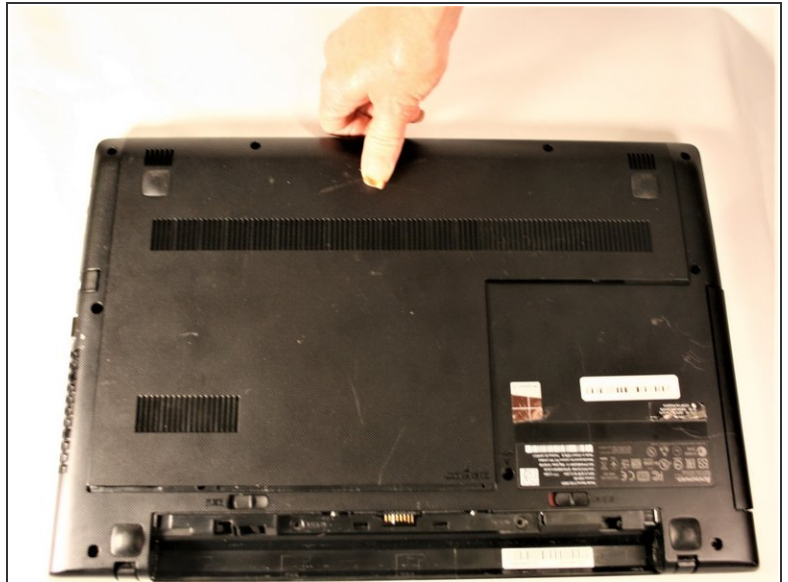
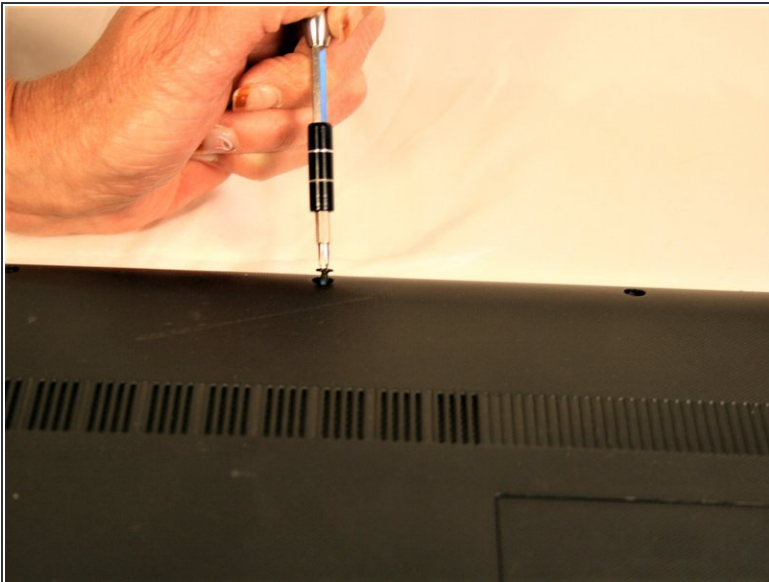
- [Phillips #00 Screwdriver](#) (1)
 - [Tweezers](#) (1)
-

Step 1 — Motherboard



- From the underside of the laptop, press the two battery tabs inward to remove the battery. Lift the battery to remove.

Step 2



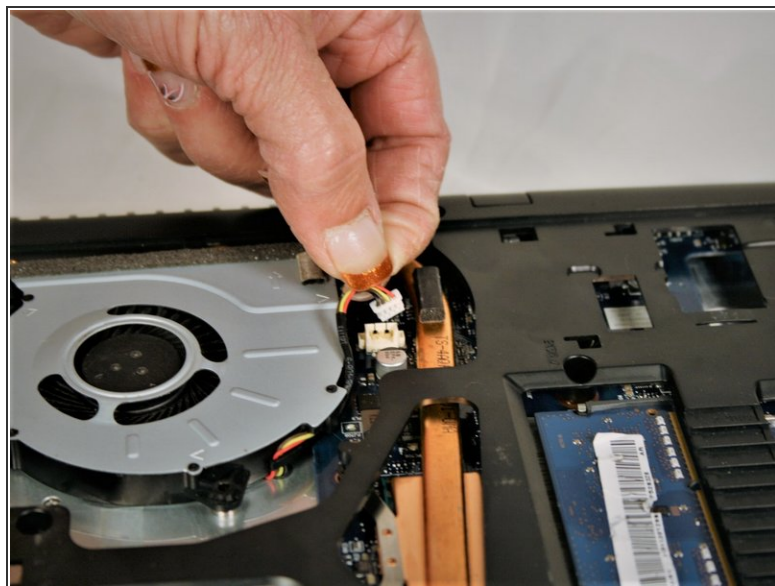
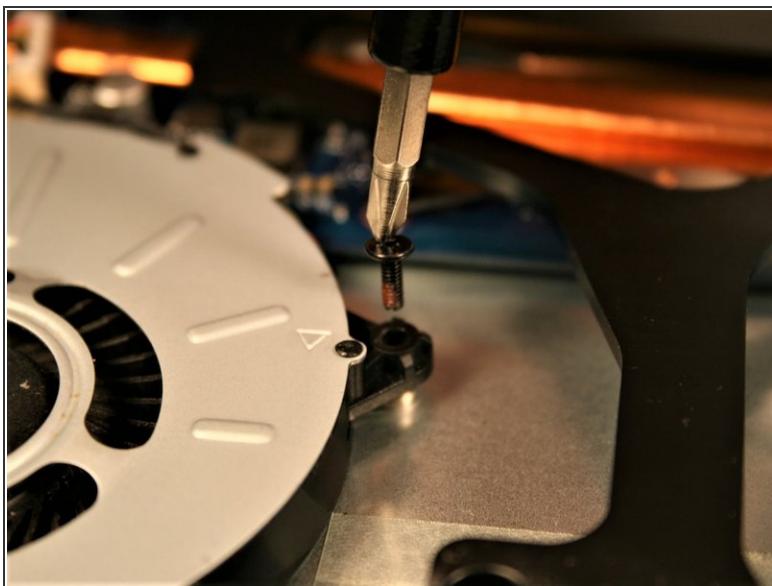
- Remove the three #00x5.5mm screws from the bottom front under panel and then slide the main access panel forward and out.

Step 3



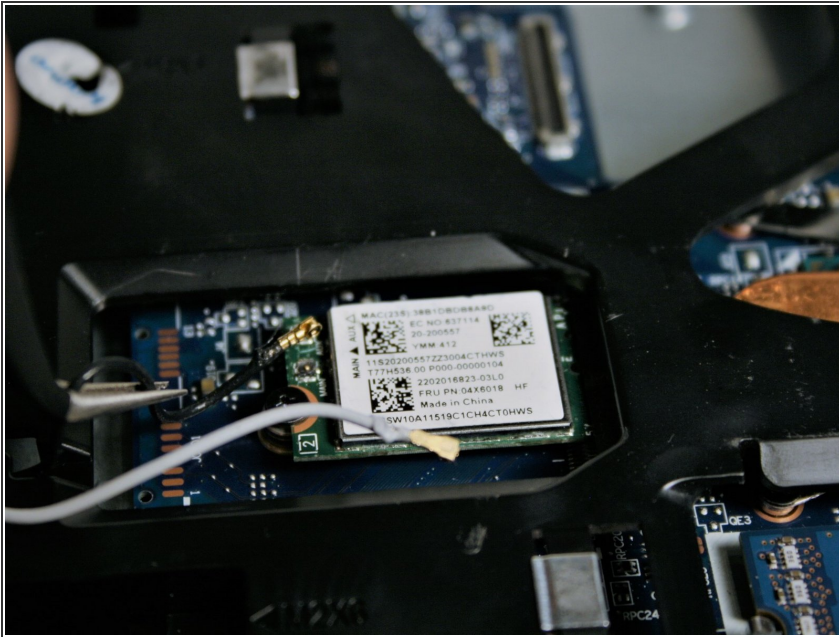
- Remove the two #00x4.5mm screws from the hard drive and then slide the drive to the side and remove the hard drive.

Step 4



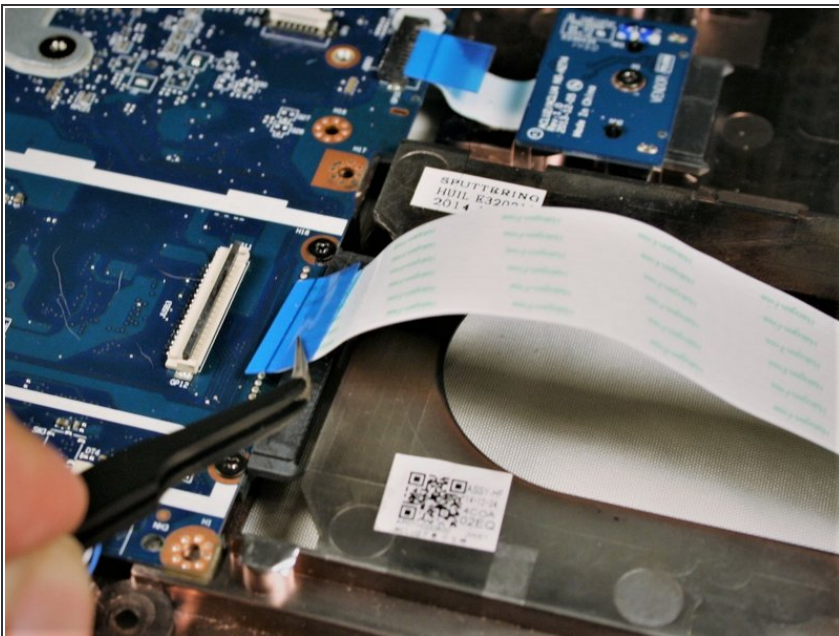
- Remove the three #00x5.5mm screws from the fan unit, unplug the fan wiring connector and then remove the fan unit.

Step 5



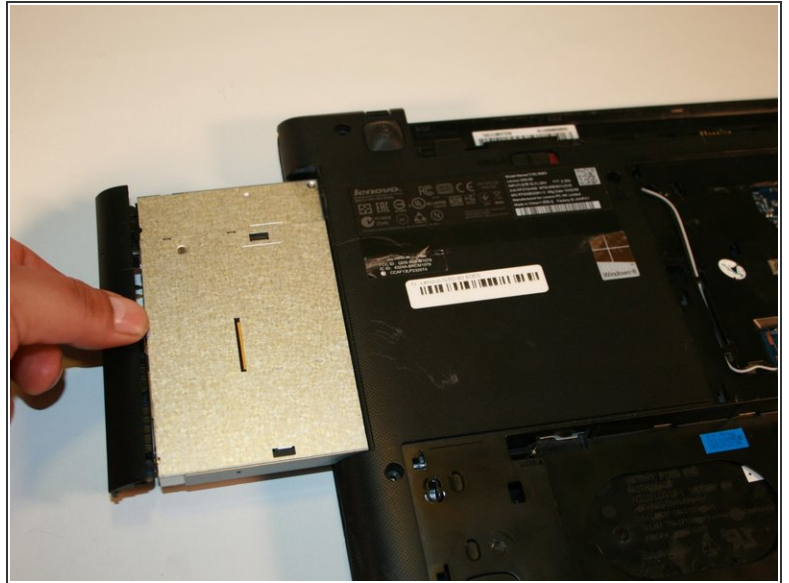
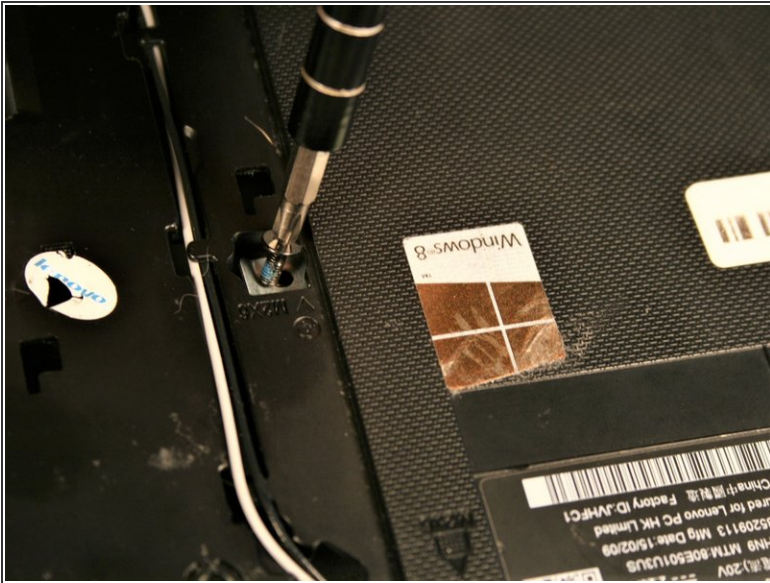
- Use tweezers to carefully remove the white and black wires from the WiFi card. Thread the wires back out of it's channel and hold to the side.

Step 6



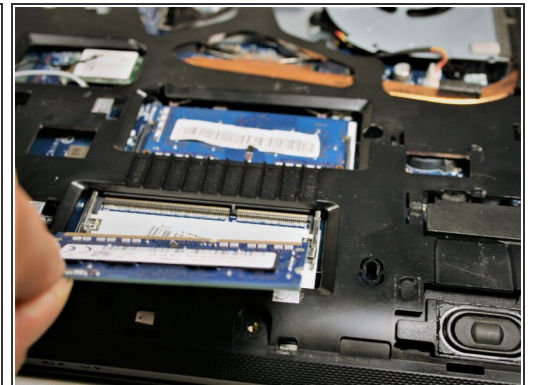
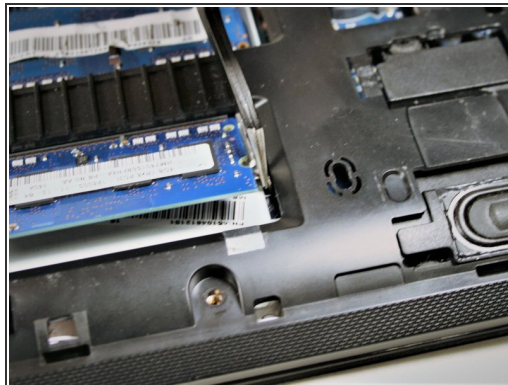
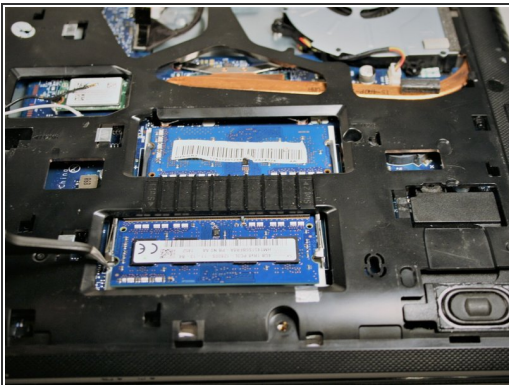
- Unplug the two ribbon cables from under the fan unit area.

Step 7



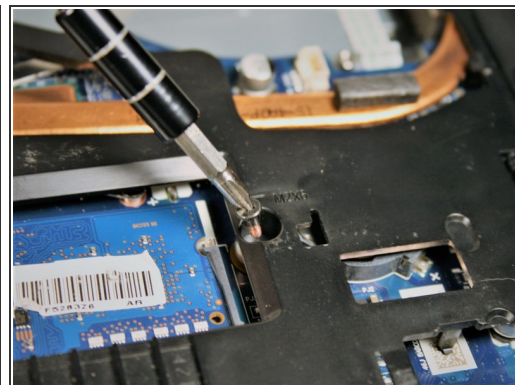
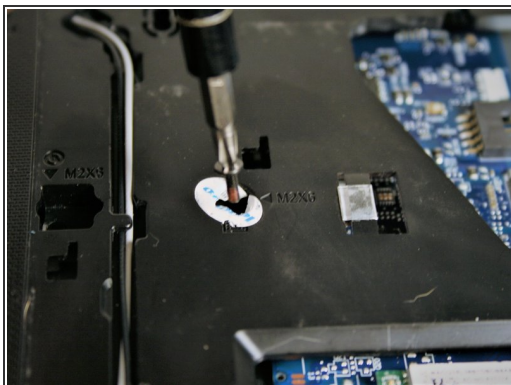
- Remove the CD Drive fixing screw (#00x5.5mm) and slide the drive out from it's slot.

Step 8



- Release the RAM fixing clip from both ends of each RAM chip. Once released, slide out each RAM chip.

Step 9



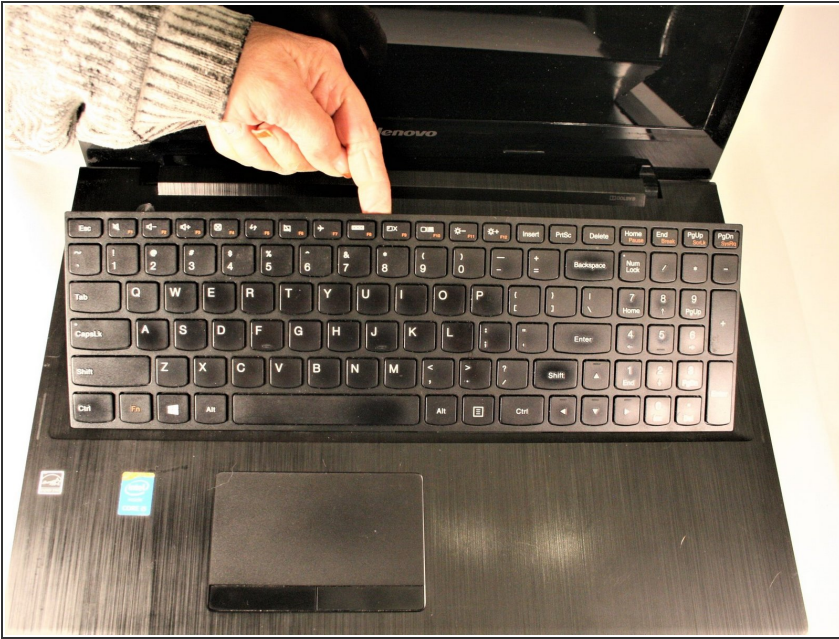
- Remove the three #00x5.5mm screws holding the keyboard.

Step 10



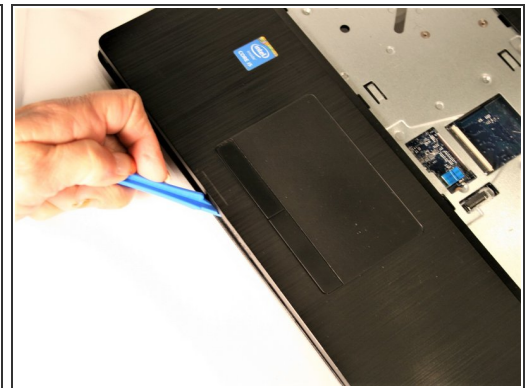
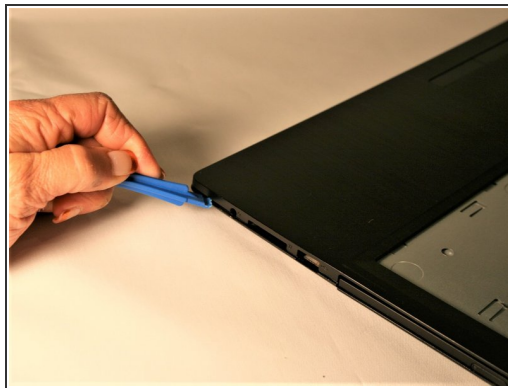
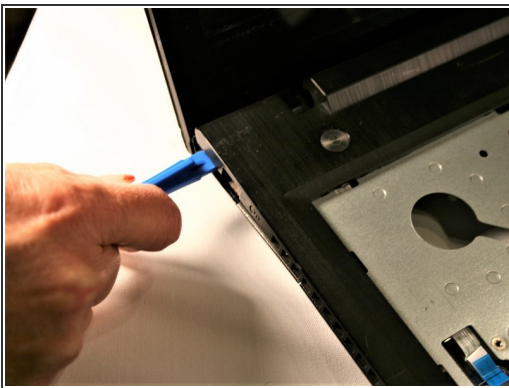
- Remove the six perimeter #00x5.5mm screws holding the palm rest.

Step 11



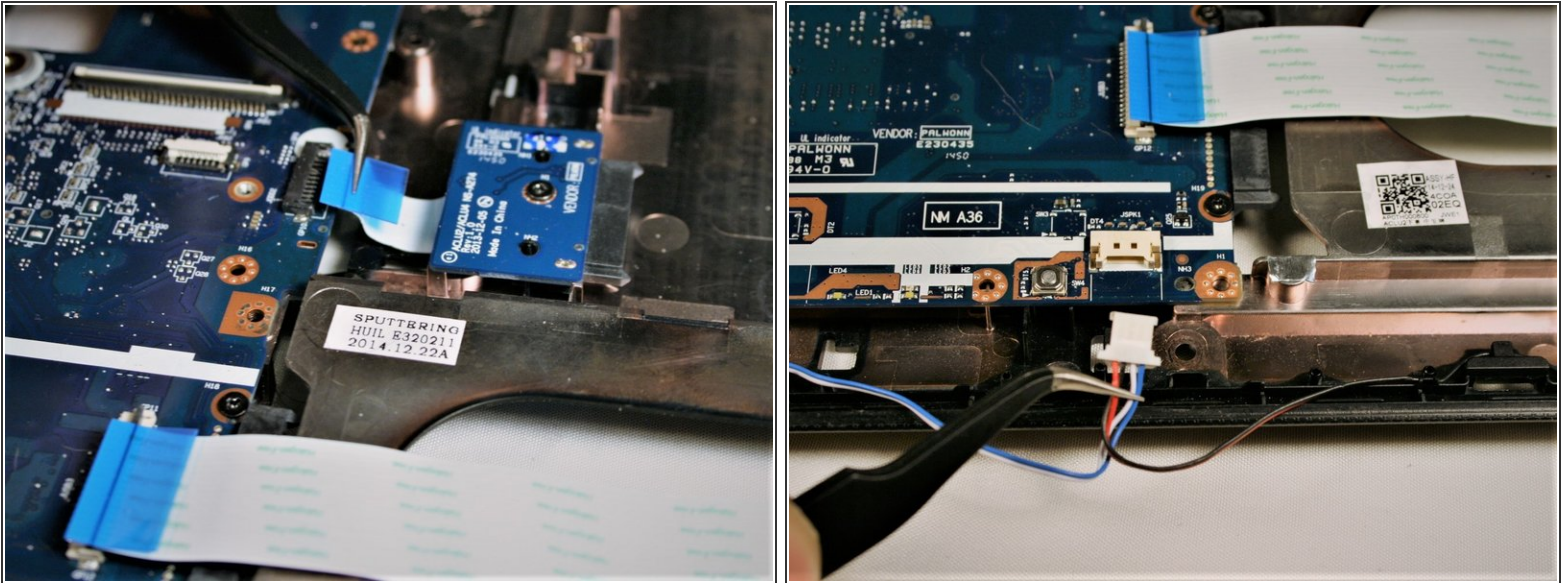
- Flip the laptop over, lift the screen and with a plastic spudger begin to remove the keyboard. Start at the top left corner and work from left to right lifting the keyboard. Once the top section is free, lift the keyboard up and away from yourself. Remove the ribbon cable connection and set the keyboard aside.

Step 12



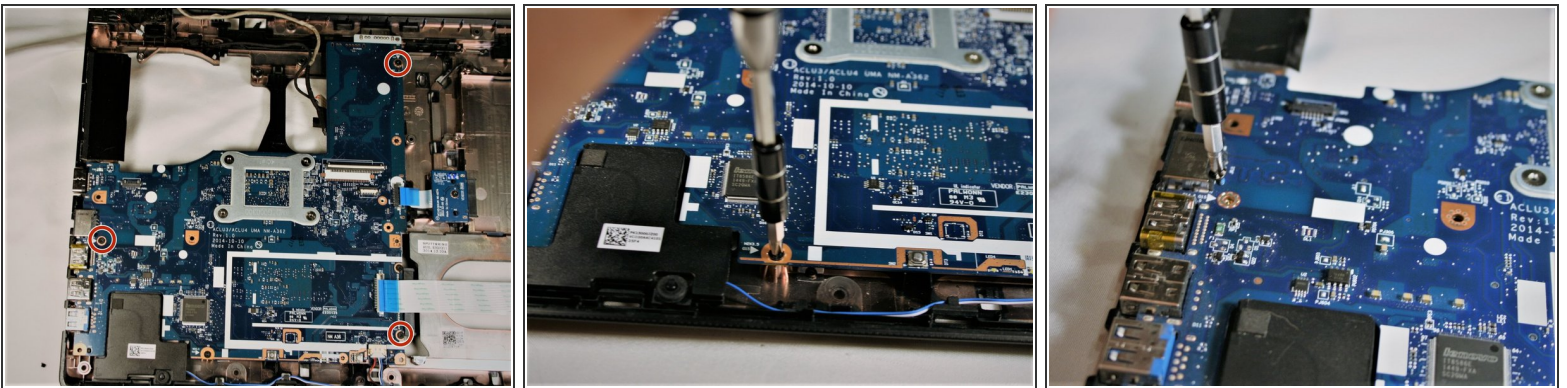
- Disconnect the two ribbon cables then using a plastic spudger, begin to separate the the palm rest from the chassis. Start along the front left edge and work left to right to separate each half. Separate the left and right sides in the same fashion.

Step 13



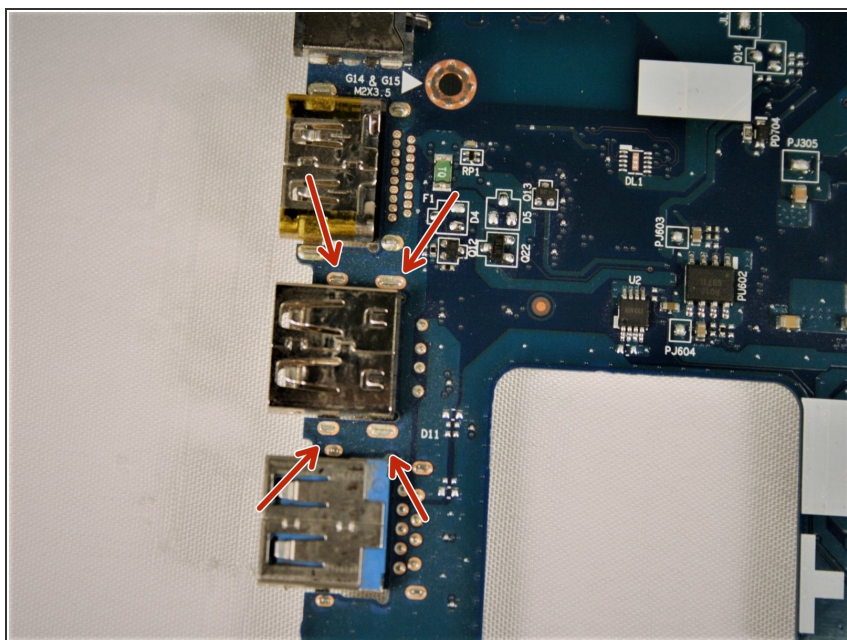
- Disconnect the CD Drive ribbon cable and the auxiliary board cable. Disconnect the speaker cable and then remove the CD Drive board fixing screw (#00x4.5mm). Remove the auxiliary board fixing screw and then remove the auxiliary board.

Step 14



- Remove the three motherboard fixing screws (#00x5.5mm) and remove the motherboard.

Step 15 — USB Port



- These joints will have to be soldered for removal

Step 16



- [How To Solder and Desolder Connections](#)

To reassemble your device, follow these instructions in reverse order.