



Lenovo G70-80 Screen Replacement

Is your screen messing up? Here's a guide in order to replace the screen on your Lenovo G70-80.

Written By: Alexis Buford





TOOLS:

- [Phillips #00 Screwdriver](#) (1)
- [iFixit Opening Tools](#) (1)

Step 1 — Battery



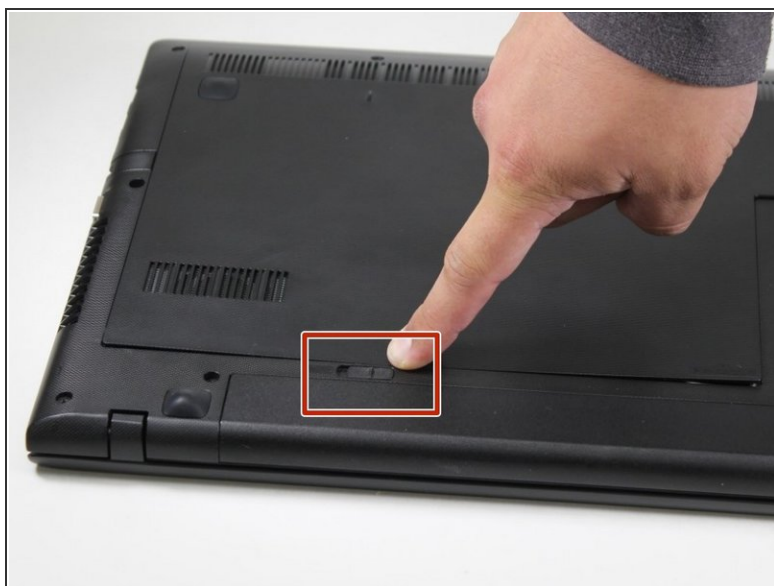
- Turn off the computer.
- Set the computer upside down with the back facing up.

Step 2



- ❗ Located directly below the back plate will be two switches near where the battery is located.
- With the battery facing you, slide the battery switch on the right side of the laptop towards the right.
- ❗ Once it is unlocked, you will see a red indicator next to the switch.

Step 3



- i** After the switch on the right is unlocked, you will hear a click, and you should see a red indicator next to the switch.
- Slide the left battery release switch to the left.
 - While holding the switch to the left, lift the battery.

Step 4



- Remove the battery.

Step 5 — Screen



- Set your computer to face you, with the screen facing up.

Step 6



- After the computer is set up, use the plastic opening tool to pull the panel forward and release it from the top part of the screen.

Step 7



- After the top part of the panel is removed, use the plastic opening tool to pull the panel apart from the bottom.
- ⓘ If you are having trouble removing the panel from the screen, take your hands and pull up on both sides of the laptop.

Step 8



- Once the panel is removed, you will see eight screws around the screen that secure the LCD panel to the plastic. Three screws are located on both sides of the laptop. The other two screws are at the top of the screen. Use your **screwdriver** to remove them.

Step 9



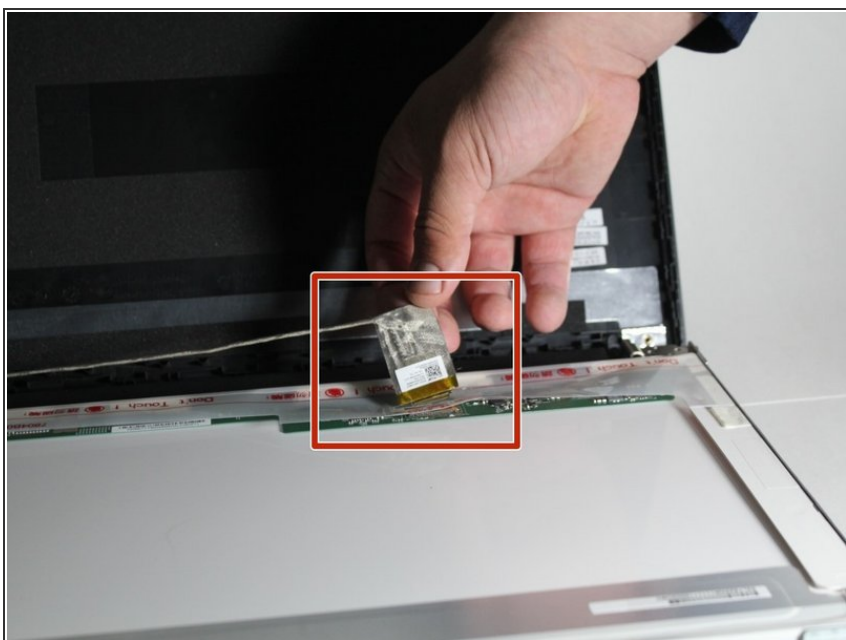
- Carefully separate the LCD panel from the plastic cover.

Step 10



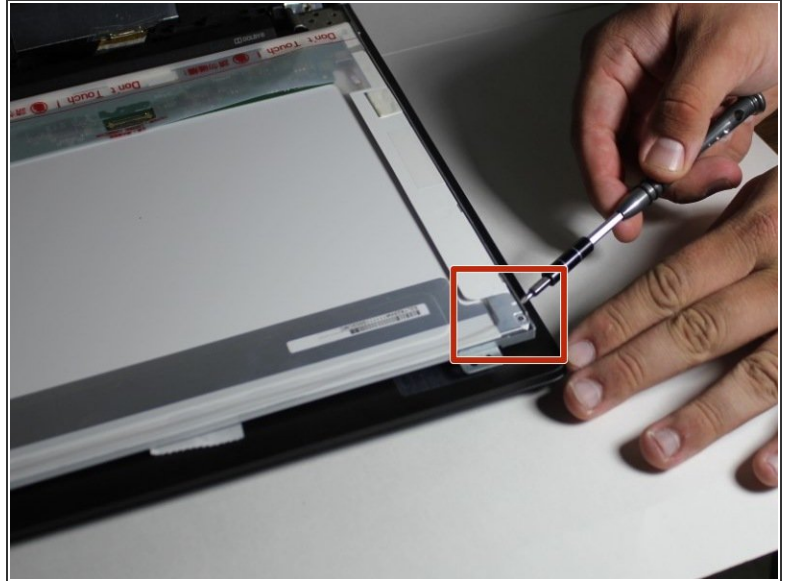
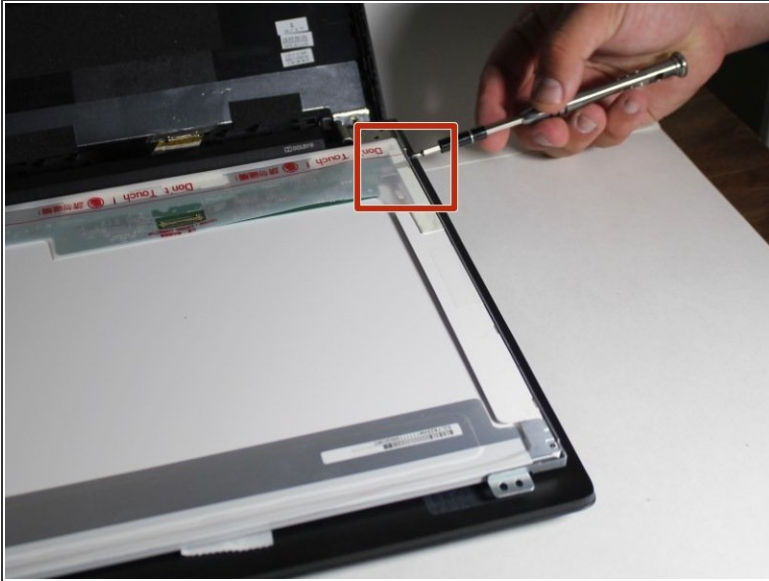
- Lower the screen onto the keys.

Step 11



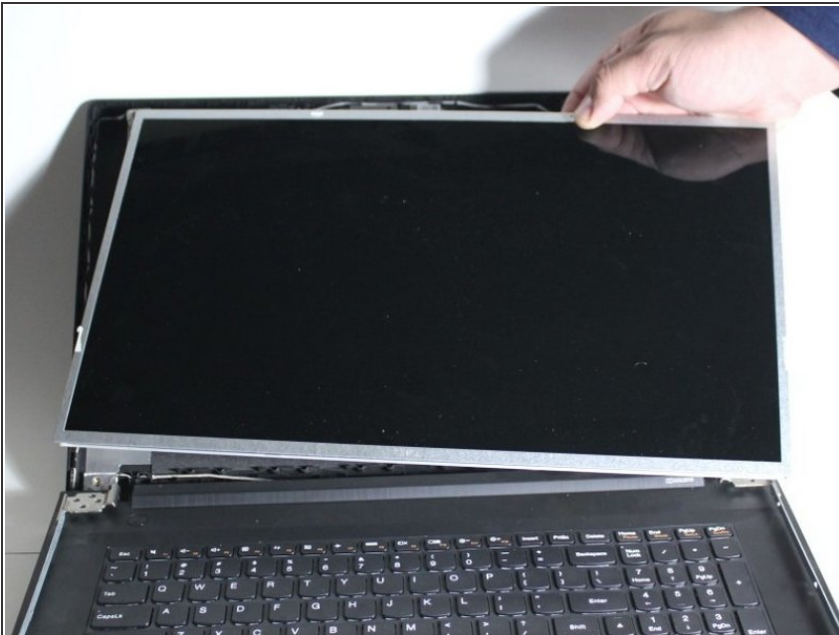
- Disconnect the connector by peeling it off to where the connection is with the back plastic cover.

Step 12



- Remove the four screws that mount the panel onto the mounting arms. There should be a screw on every corner. You will need your **screwdriver** for this.

Step 13



- Remove the screen.

To reassemble your device, follow these instructions in reverse order.

This document was generated on 2019-10-09 04:00:22 PM (MST).

