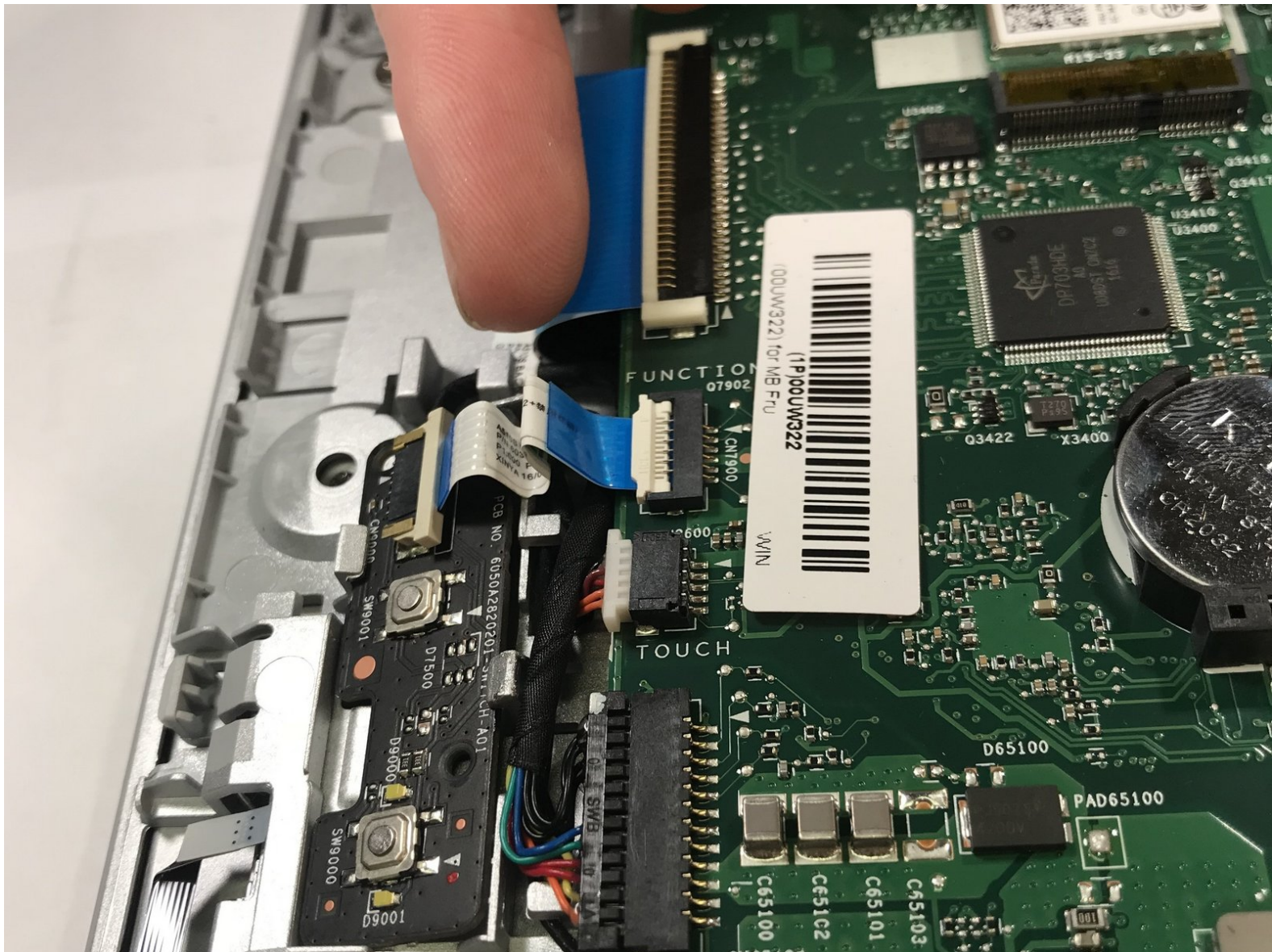




Written By: Jackson Blake



Page 1 of 8

INTRODUCTION

This requires using a tool to help lift up the power switch board to slide it out of the slot. Be careful and go slow when removing it. Similarly, the tabs holding the ribbon cable down are very small.

TOOLS:

- [Phillips Head Screwdriver: Size PH1](#) (1)
 - [Spudger](#) (1)
-

Step 1 — Stand Base



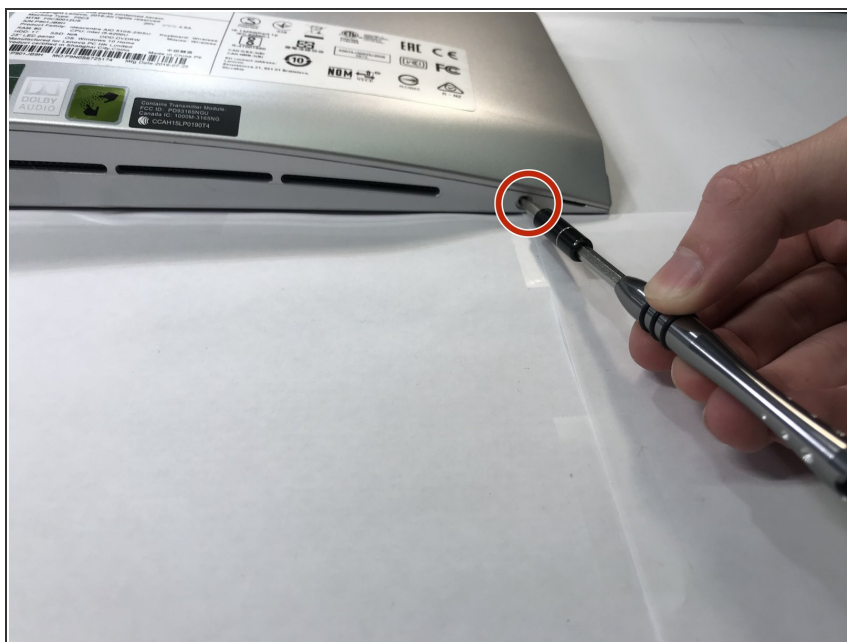
- Turn off the computer, unplug all cables, and let it cool down. Lay the computer flat on its screen.
- ⓘ Make sure that the work surface is flat and has nothing sharp on it.

Step 2



- Remove the monitor stand screw in the bottom of the stand, and remove the stand completely.

Step 3 — Back Cover



- Remove the two screws on the bottom of the computer, one on each side.

Step 4



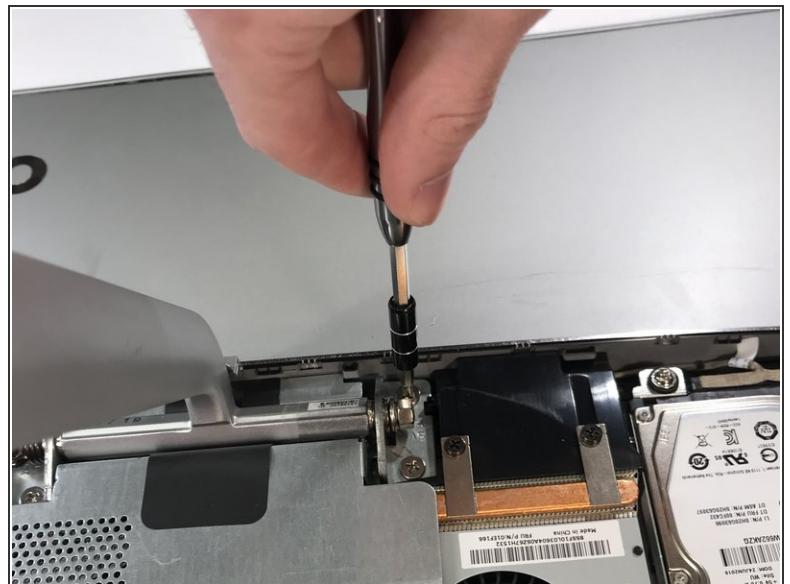
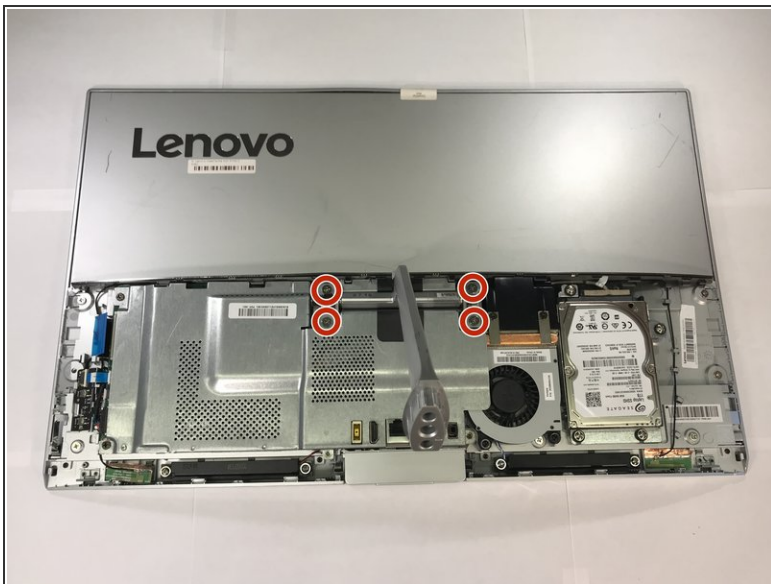
- Locate the slot on the right side of the computer next to the screw hole. Use a plastic opening tool or spudger to pry off the rear cover. (Don't be afraid to use a little force.)

Step 5



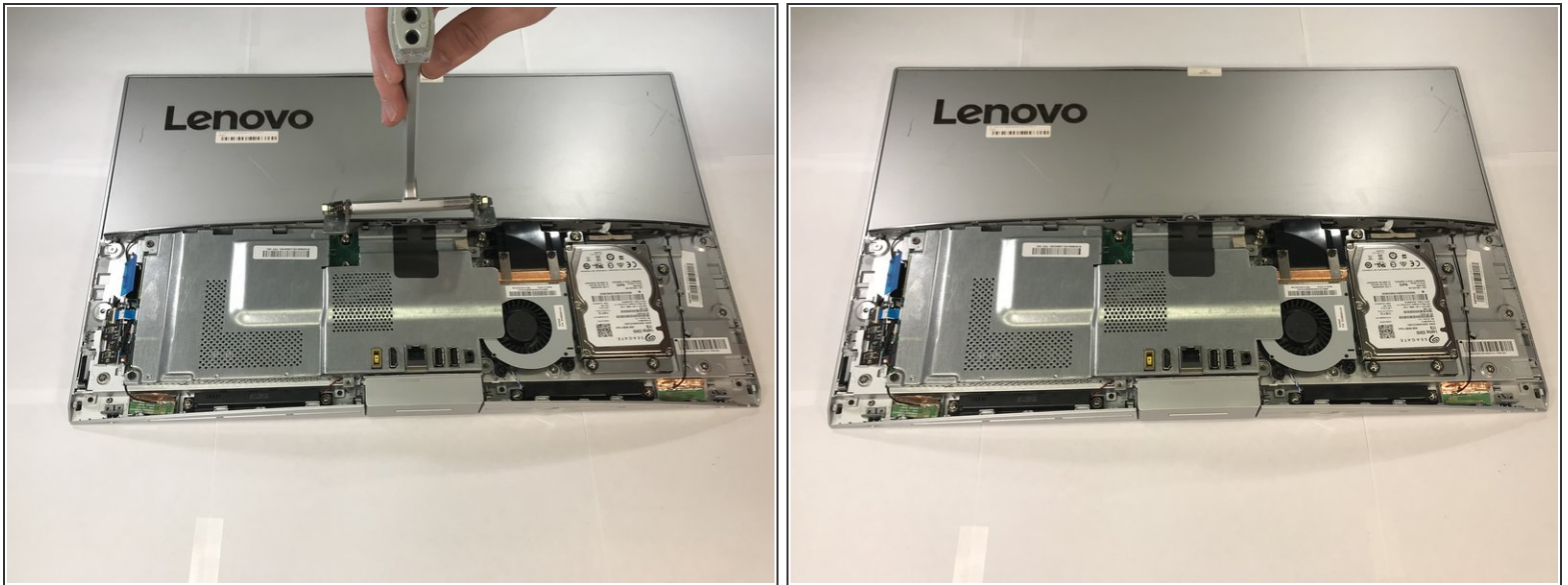
- Once it has been separated, lift to remove.

Step 6 — Arm Stand



- Remove the four screws that secure the arm stand.

Step 7



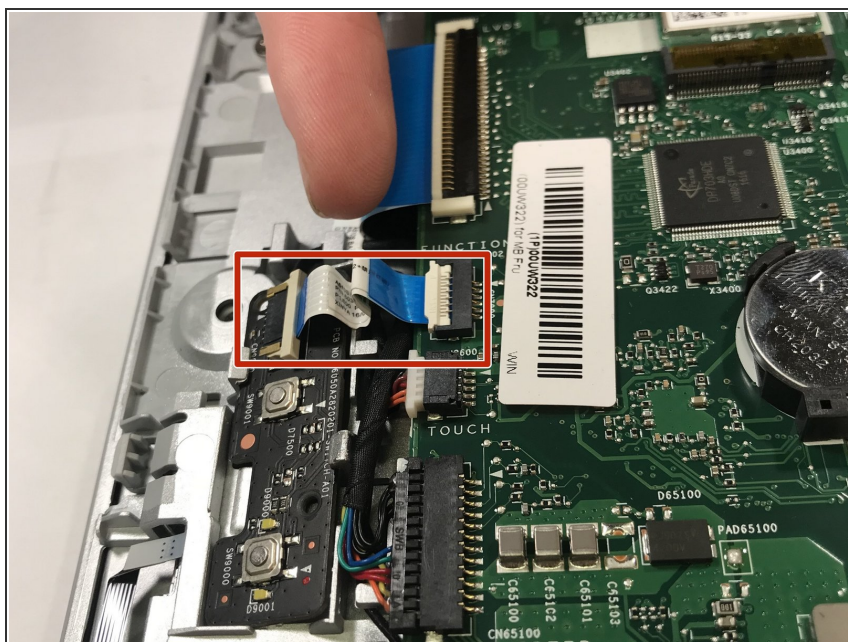
- Lift up to remove the arm stand.

Step 8 — EMI Cover



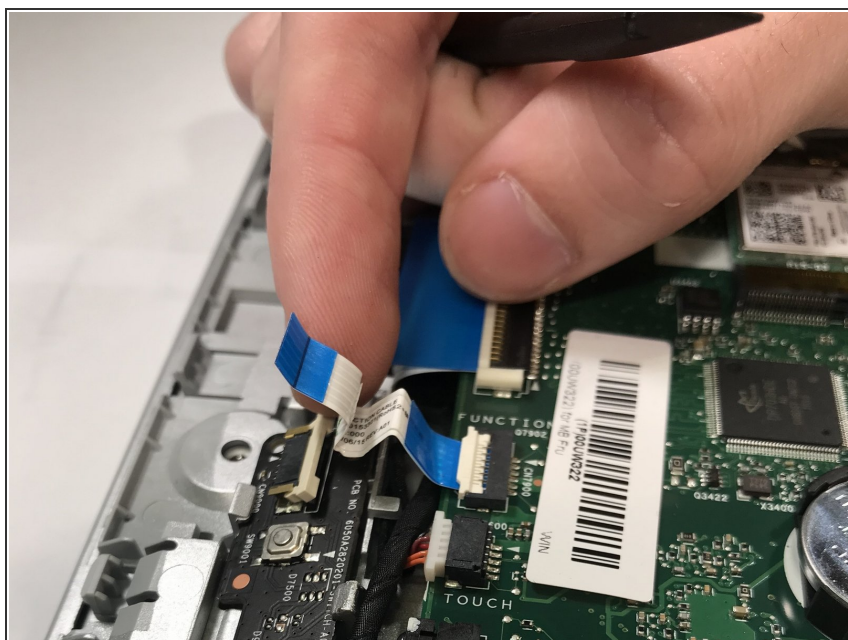
- Remove the 5 screws that secure the EMI cover.
- Remove the cover.

Step 9 — Power Switch Board



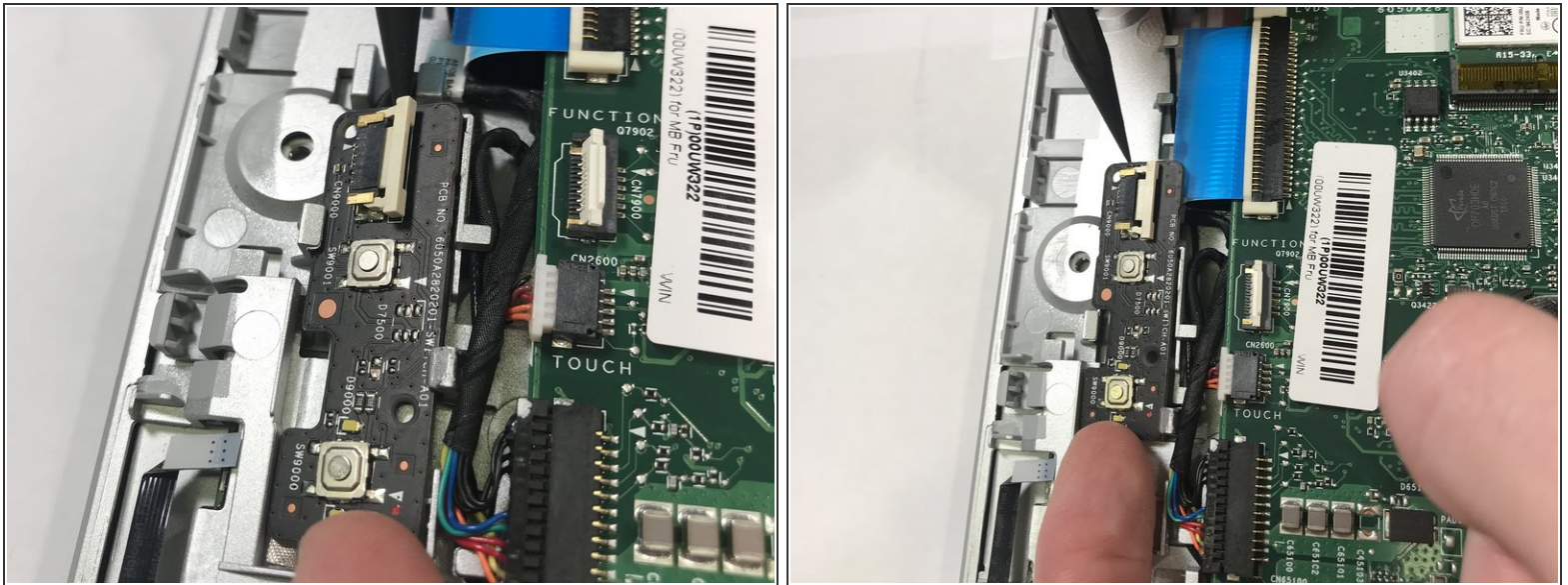
- Locate the power switch board and the tan colored tab on it holding the blue and white ribbon cable down.

Step 10



- Pull the tab towards the blue and white ribbon cable to open it. Pull the cable out of the power switch board.

Step 11



- Slide the power switch cable out of its slot in the direction shown, making sure to lift up the end carefully.

To reassemble your device, follow these instructions in reverse order.