



Lenovo IdeaCentre AIO 510S-23ISU WiFi Card Replacement

This guide will show you how to remove and replace the WiFi card inside the computer.

Written By: Jackson Blake



INTRODUCTION

Be careful when lifting the WiFi card out of its slot not to damage the slot. Similarly, make sure that once it has been replaced that the two wires are securely connected to the card.

TOOLS:

- [Phillips Head Screwdriver: Size PH1](#) (1)
 - [Spudger](#) (1)
-

Step 1 — Stand Base



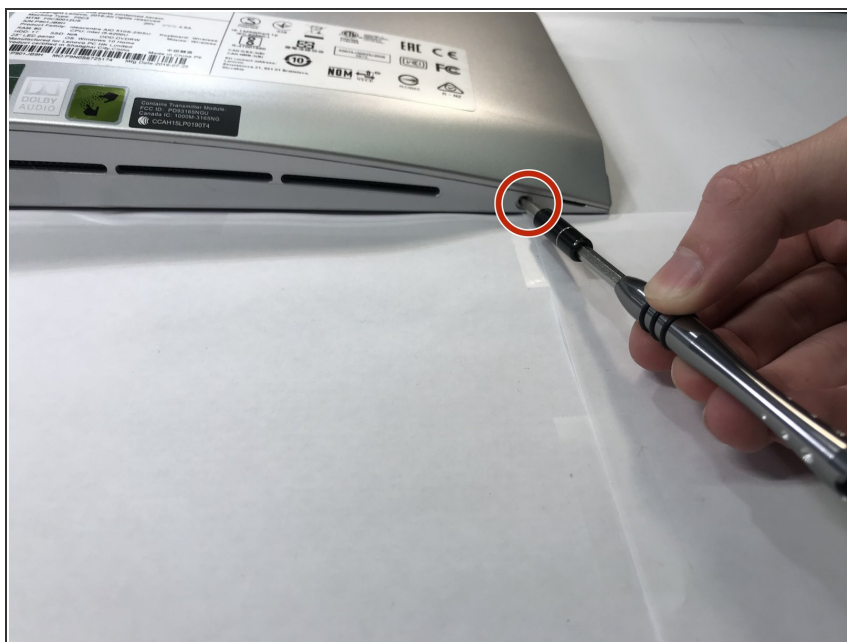
- Turn off the computer, unplug all cables, and let it cool down. Lay the computer flat on its screen.
- ⓘ Make sure that the work surface is flat and has nothing sharp on it.

Step 2



- Remove the monitor stand screw in the bottom of the stand, and remove the stand completely.

Step 3 — Back Cover



- Remove the two screws on the bottom of the computer, one on each side.

Step 4



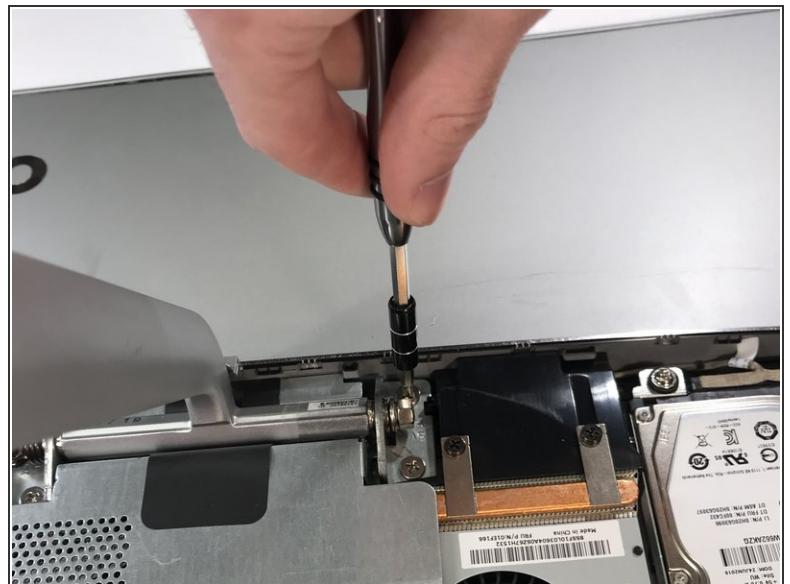
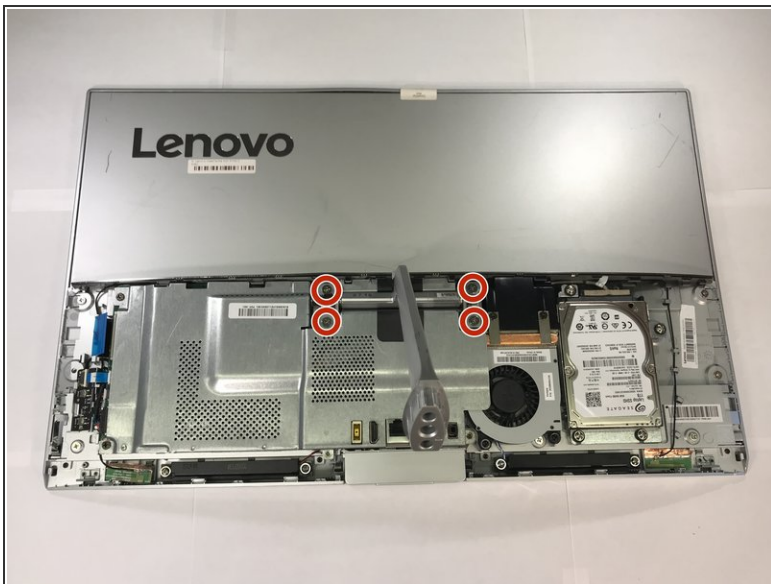
- Locate the slot on the right side of the computer next to the screw hole. Use a plastic opening tool or spudger to pry off the rear cover. (Don't be afraid to use a little force.)

Step 5



- Once it has been separated, lift to remove.

Step 6 — Arm Stand



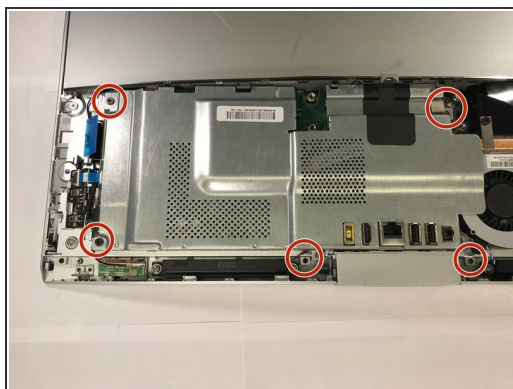
- Remove the four screws that secure the arm stand.

Step 7



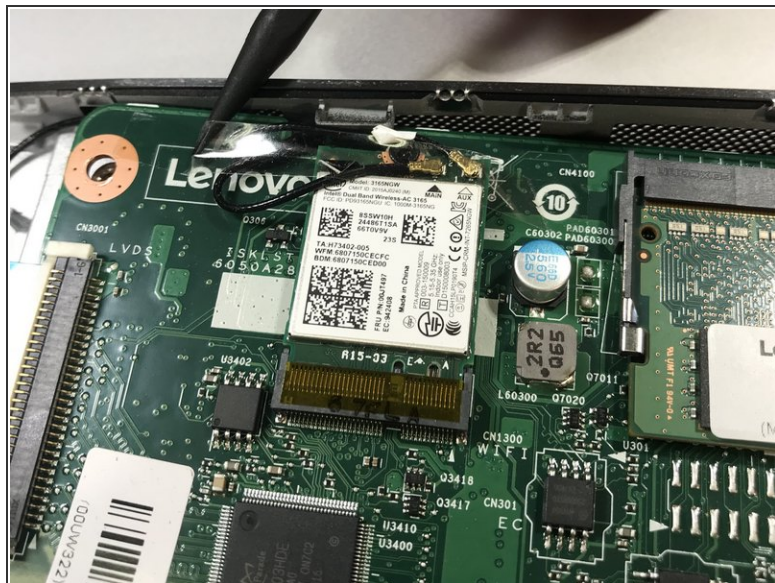
- Lift up to remove the arm stand.

Step 8 — EMI Cover



- Remove the 5 screws that secure the EMI cover.
- Remove the cover.

Step 9 — WiFi Card



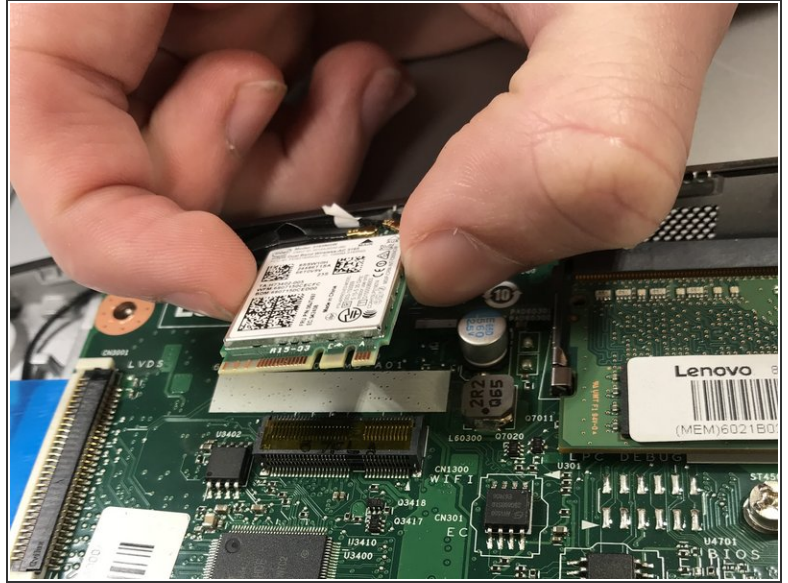
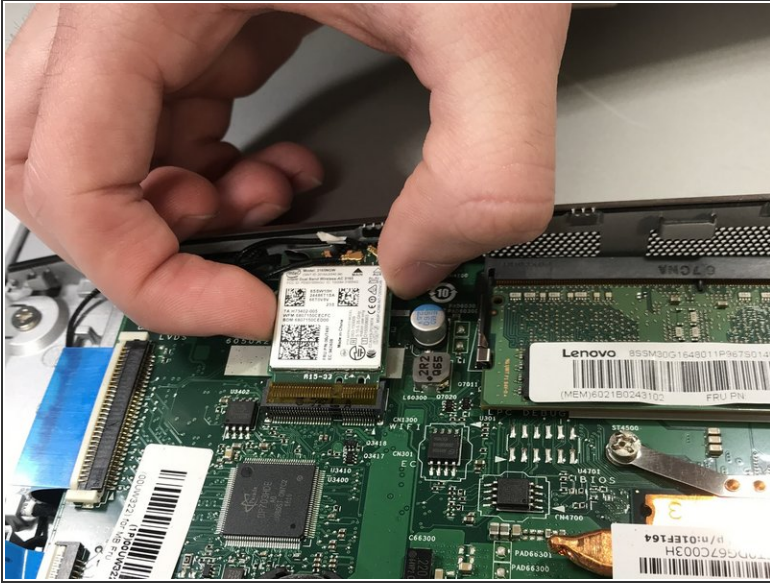
- Remove any tape that secures the WiFi antenna cables.

Step 10



- Remove the single screw that secures that WiFi card to the motherboard.

Step 11



- Lift the wifi card and then pull out the card.

Step 12



- Locate the two small cables connected to the wifi card and pull gently to disconnect them.

To reassemble your device, follow these instructions in reverse order.